



Get<sup>DTV/HDTV™</sup>

# SHARP SHOOTER™

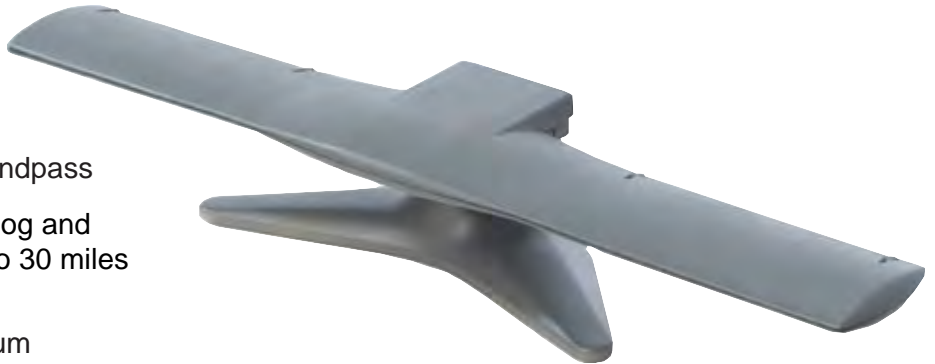
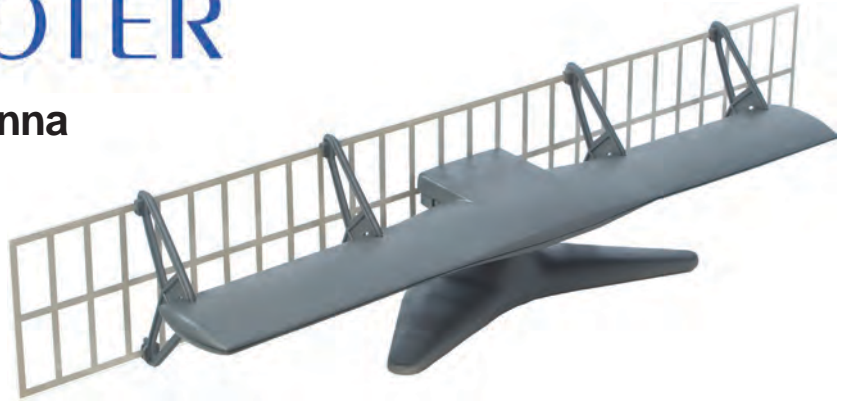
## The SharpShooter SS-3000 Antenna

### Winegard's Newest and Best All-Band Indoor Directional/Bidirectional DTV/HDTV Antenna Platform

SharpShooter by Winegard:

- Winegard "Scatter-Plane" to reject digital multi-path
- Response throughout VHF/UHF bandpass
- Receives and resonates indoor analog and outstanding DTV/HDTV signals up to 30 miles from the transmit source
- Reception for apartment/condominium dweller to receive digital broadcasts where line-of-sight to the transmit source is blocked
- Only 26.75 inches wide
- Weighs only 1½ pounds (Ships UPS)

**At last! A DTV/HDTV antenna specifically designed for the indoor DTV/HDTV enthusiast!**



Made in U.S.A. Patent Pending



# SHARP SHOOTER

Get **DTV/HDTV™**



## SharpShooter Model SS-3000

### Mechanical

Width ..... 26.75"  
 Height ..... 5"  
 Depth ..... 4.25"  
 Antenna weight ..... 1.5 lbs.  
 Will ship UPS

### Electrical

Bandpass ..... 54-806 MHz  
 Power requirements ..... 150mA@12 VDC  
 Amplifier gain ..... 7-10 dB ave. VHF/UHF  
 Amplifier noise figure ..... 1.0 dB or lower VHF/UHF

### VHF Low Band (54-88 Mhz, CH 2-6)

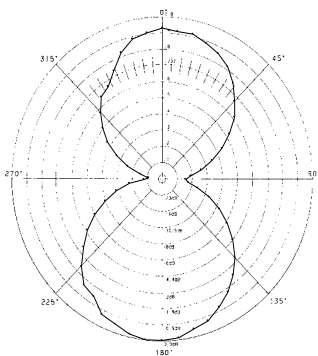
Nonamplified element gain ..... -15 dB  
 Ave. half power beam width ..... 87°  
 Ave. front to back ratio ..... 1.2 dB  
 VSWR ..... 2.0- 2.1

### VHF High Band (174-216 Mhz, CH 7-13)

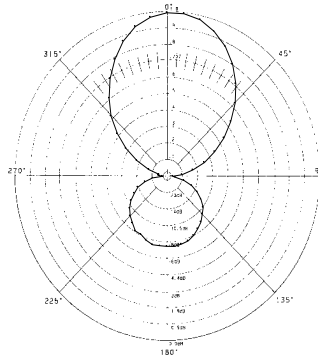
Nonamplified element gain ..... -5 dB  
 Ave. half power beam width ..... 70°  
 Ave. front to back ratio ..... 11.3 dB  
 VSWR ..... 2.2- 2.3

### UHF (470-806 Mhz, CH 14-69)

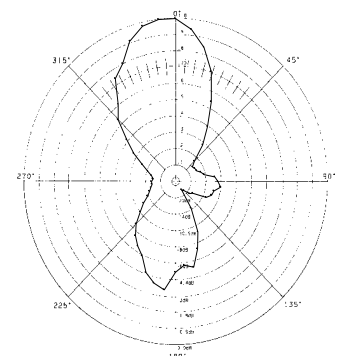
Nonamplified element gain ..... 0 dB  
 Ave. half power beam width ..... 36°  
 Ave. front to back ratio ..... 7.5 dB  
 VSWR ..... 2.2- 3.3



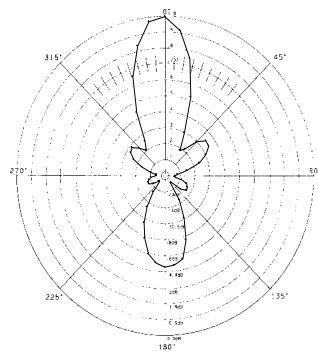
CH. 2



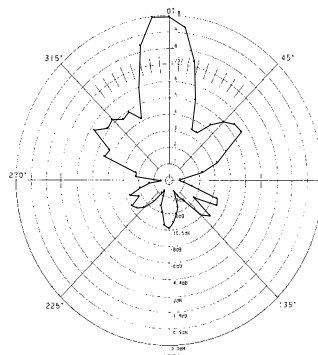
CH. 13



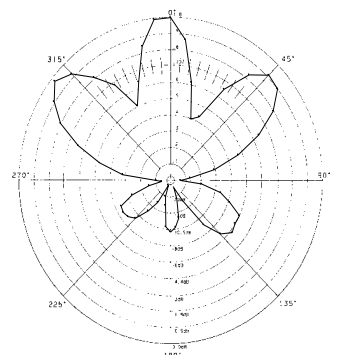
CH. 20



CH. 38



CH. 44



CH. 50