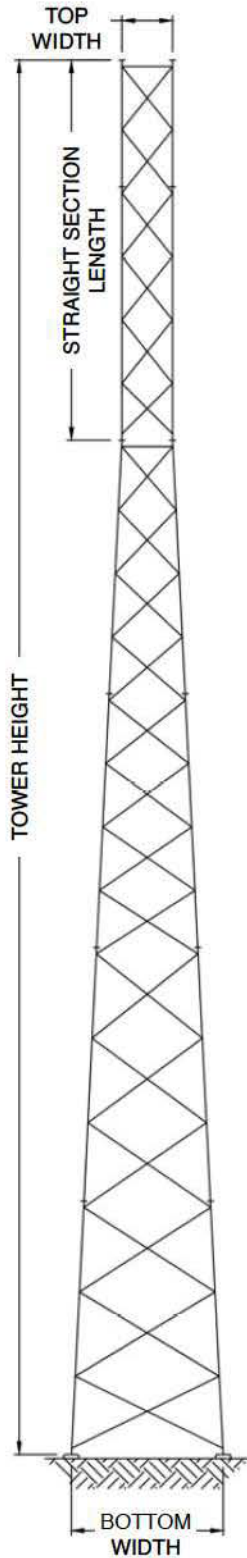


RT STANDARD SERIES TOWERS

TRIANGULAR CROSS SECTIONS



ELEVATION VIEW

N.T.S

TOWER HEIGHT (FT)	TOWER KIT P/N	TOP NOMINAL WIDTH	BOTTOM NOMINAL WIDTH	STRAIGHT SECTION LENGTH
190	RT190L	2'-9"	18'-10"	30'
	RT190M	2'-9"	18'-11"	30'
	RT190H	4'-9"	20'-11"	30'
180	RT180L	2'-9"	16'-10"	40'
	RT180M	2'-9"	16'-11"	40'
	RT180H	4'-9"	18'-11"	40'
170	RT170L	2'-9"	16'-10"	30'
	RT170M	2'-9"	16'-10"	30'
	RT170H	4'-9"	18'-11"	30'
160	RT160L	2'-9"	14'-10"	40'
	RT160M	2'-9"	14'-10"	40'
	RT160H	4'-9"	16'-11"	40'
150	RT150L	2'-9"	14'-10"	30'
	RT150M	2'-9"	14'-10"	30'
	RT150H	4'-9"	16'-11"	30'
140	RT140L	2'-9"	12'-10"	40'
	RT140M	2'-9"	12'-10"	40'
	RT140H	4'-9"	14'-11"	40'
130	RT130L	2'-9"	12'-9"	30'
	RT130M	2'-9"	12'-10"	30'
	RT130H	4'-9"	14'-10"	30'
120	RT120L	2'-9"	10'-9"	40'
	RT120M	2'-9"	10'-10"	40'
	RT120H	4'-9"	12'-10"	40'
110	RT110L	2'-9"	10'-9"	30'
	RT110M	2'-9"	10'-10"	30'
	RT110H	4'-9"	12'-10"	30'
100	RT100L	2'-9"	8'-9"	40'
	RT100M	2'-9"	8'-10"	40'
	RT100H	4'-9"	10'-10"	40'

Legs: High Strength Structural Tubing, Grade 50

Bracing: High Strength Angles, Grade 50

Bolts: Structural Bolts, 120 ksi Tensile Strength

Galvanizing: Per ANSI/TIA-222-G