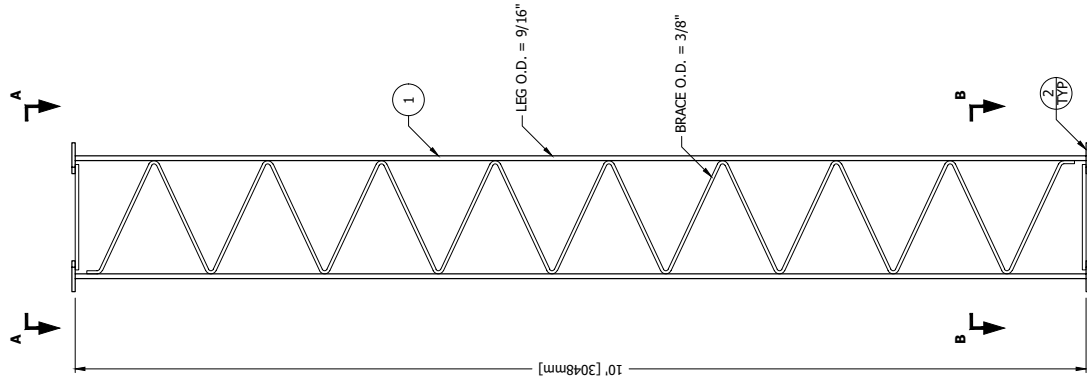


FILE NO.

SECTION ASSEMBLY P/N: 1WB			
BILL OF MATERIAL			
ITEM	PART NO.	QTY	DESCRIPTION
1	V56	1	SECTION 10' 1WB WELDED
2	210008GA	12	BOLT ASSY 3/8 X 1-1/2 HCS G5 [M10x38]

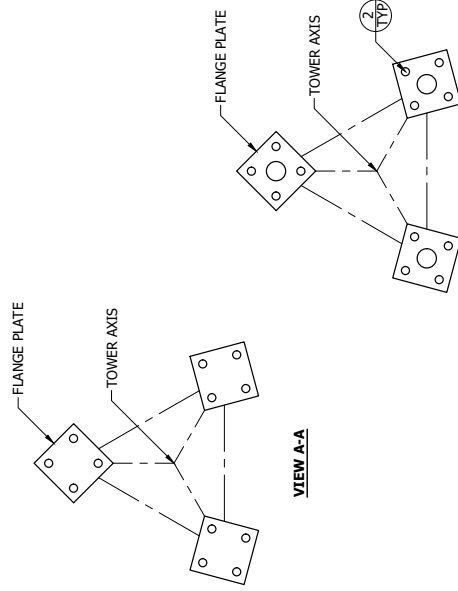
**GENERAL NOTES:**

- LEG PART NUMBER IS STAMPED AT THE BOTTOM OF EACH LEG AND MUST BE LOCATED AT THE BOTTOM OF THE SECTION FOR PROPER ASSEMBLY.
- FLANGE BOLTS ARE FOR FLANGE PLATES AT THE BOTTOM OF THE SECTION.
- DRAWING IS N.T.S. AND IS FOR ASSEMBLY PURPOSES ONLY.
- NOMINAL METRIC EQUIVALENTS ARE GIVEN FOR REFERENCE ONLY AND SHALL NOT BE SUBSTITUTED FOR THE DESCRIBED SIZES UNLESS OTHERWISE APPROVED BY ROHN PRODUCTS.



ELEVATION VIEW

FLANGE	OFFSET	BEVEL	FLANGE PLATE (P/N)	SPREAD
TOP	N/A	N/A	3" X 3" X 3/8" (P/N: 3A)	1'-2" [356mm]
BOTTOM	N/A	N/A	3" X 3" X 3/8" (P/N: 3A)	1'-2" [356mm]



PO BOX 5999  
 PECORA, IL 61601-5999  
 TOLL FREE 800-727-ROHN

THIS DRAWING IS THE PROPERTY OF ROHN. IT IS NOT TO BE REPRODUCED, COPIED, OR TRANSMITTED IN ANY FORM OR BY ANY MEANS, WITHOUT OUR WRITTEN CONSENT.

SECTION ASSEMBLY  
 DETAILS FOR SSV 1WB

DWN: AED	CHK'D: RDM	DATE: Mar/14/1979
ENGR: TWS	SHEET #: 1 OF 1	
PRJ. ENGR:	PRJ. MNGR:	
DRAWING NO: A790089	REV: 3	