

FILE NO.

REVISIONS

| REV. | DESCRIPTION        | DWN | CHK | APP |
|------|--------------------|-----|-----|-----|
|      | FIXED DIM NOTATION |     |     |     |
| 1    |                    | JHY | JDM | DWG |
|      | DATE: Nov/20/2012  |     |     |     |

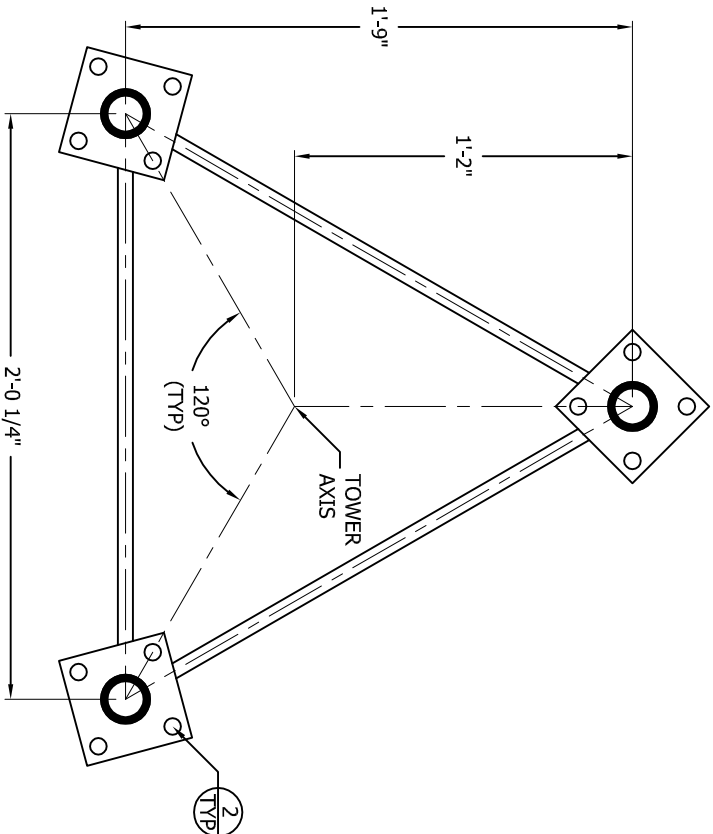
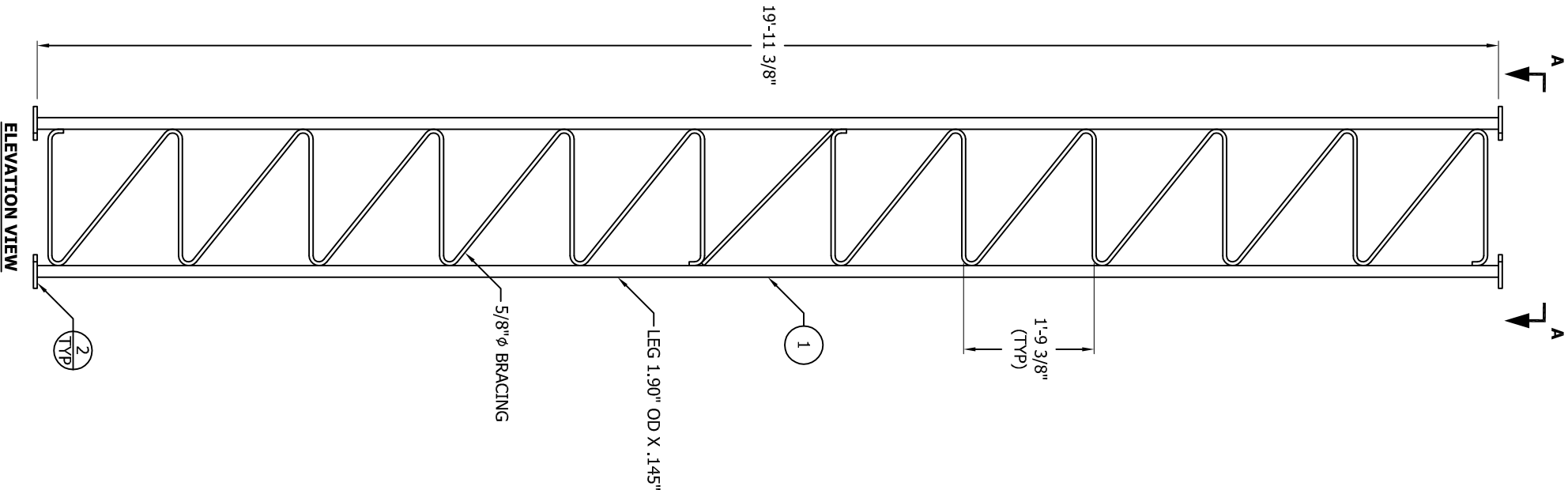
SECTION ASSEMBLY P/N: 6520G

BILL OF MATERIAL

| ITEM | PART NO. | QTY | DESCRIPTION                |
|------|----------|-----|----------------------------|
| 1    | KS149    | 1   | SECTION 65G 20' 1.5STD LEG |
| 2    | 65JBK    | 1   | JOINT BOLT KIT - 65G       |

GENERAL NOTES:

- PART NUMBER IS STAMPED AT THE BOTTOM OF EACH SECTION AND MUST BE LOCATED AT THE BOTTOM OF THE SECTION FOR PROPER ASSEMBLY.
- JOINT BOLTS ARE PROVIDED AT THE BOTTOM OF THE SECTION.
- DRAWING IS N.I.S. AND IS FOR ASSEMBLY PURPOSES ONLY.



PO BOX 5999  
PEORIA, IL 61601-5999  
TOLL FREE 800-727-ROHN

THIS DRAWING IS THE PROPERTY OF ROHN. IT IS NOT TO BE REPRODUCED, COPIED OR TRACED IN WHOLE OR IN PART WITHOUT OUR WRITTEN CONSENT.

SECTION ASSEMBLY FOR 6520G

|      |        |             |
|------|--------|-------------|
| DWN: | CHK'D: | DATE:       |
| JEC  | JDM    | Aug/16/2012 |

|            |             |          |
|------------|-------------|----------|
| ENGR:      | DWG         | SHEET #: |
| PRJ. ENGR: | PRJ. MANGR: | 1 OF 1   |

|             |      |
|-------------|------|
| DRAWING NO: | REV: |
| 6520G       | 1    |