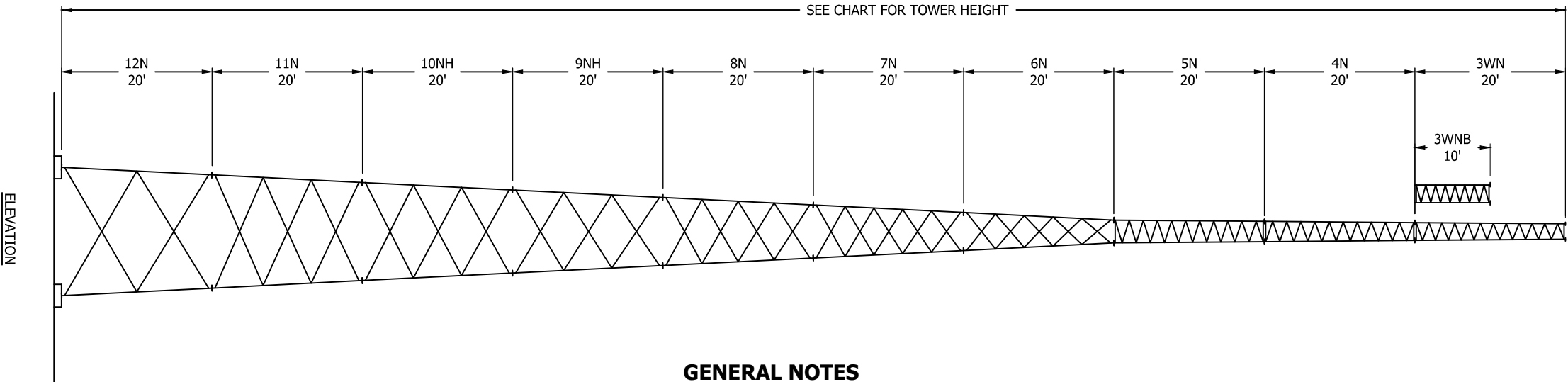


TOWER ASSEMBLY NUMBER	TOWER HEIGHT (FT)	TOP	BASE SECTIONS			EFFECTIVE PROJECTED AREA (SQ. FT.)			
			BASE	A-BOLTS 12 REQ'D	FACE SPREAD	TOP		30' BELOW TOP	
						EXP B	EXP C	EXP B	EXP C
SS040HD90	40	3WN	4N	SB4	2'-2"	41	29	60	40
SS050HD90	50	3WNB	5N	SB5	2'-6"	36	27	60	40
SS060HD90	60	3WN	5N	SB5	2'-6"	35	26	60	40
SS070HD90	70	3WNB	6N62	5/8X42	4'-6 1/4"	32	23	54	38
SS080HD90	80	3WN	6N62	5/8X42	4'-6 1/4"	22	15	37	25
SS090HD90	90	3WNB	7N165	5/8X42	6'-6 3/4"	27	18	46	30
SS100HD90	100	3WN	7N165	5/8X42	6'-6 3/4"	20	13	34	21
SS110HD90	110	3WNB	8N106	5/8X42	8'-6 3/4"	24	10	41	17
SS120HD90	120	3WN	8N106	5/8X42	8'-6 3/4"	18	11	31	18
SS130HD90	130	3WNB	9N82	5/8X42	10'-6 3/4"	21	9	36	15
SS140HD90	140	3WN	9N82	5/8X42	10'-6 3/4"	16	10	27	17
SS150HD90	150	3WNB	10N183	3/4X48	12'-7 1/4"	19	11	33	18
SS160HD90	160	3WN	10N183	3/4X48	12'-7 1/4"	15	8	25	14
SS170HD90	170	3WNB	11N332	7/8X60	14'-7 7/8"	18	9	31	15
SS180HD90	180	3WN	11N332	7/8X60	14'-7 7/8"	13	6	21	10
SS190HD90	190	3WNB	12N18	7/8X60	16'-8 3/8"	17	7	30	13



GENERAL NOTES

1. STANDARD TOWER DESIGNS ARE IN ACCORDANCE WITH APPROVED NATIONAL STANDARD ANSI/TIA-222-G, STRUCTURAL CLASS II, TOPOGRAPHIC CATEGORY 1, 3/4" DESIGN ICE THICKNESS, SEISMIC COEFFICIENT S□□ 1.0.

2. TOWER DESIGNS ASSUME ALLOWABLE EFFECTIVE PROJECTED AREAS ARE SYMMETRICALLY PLACED ON THE TOWER.

3. DESIGNS ASSUME ONE 7/8" LINE TO TOP AND TWO 7/8" LINES TO 30 FEET BELOW TOP, ONE LINE ON EACH FACE.

4. ALL TOWERS ARE PROVIDED WITH STEP BOLTS AND A TAPERED TOP.

5. GROUNDING KIT MUST BE ORDERED SEPARATELY.

6. ASSEMBLY DRAWINGS AND STANDARD FOUNDATION DETAILS ARE SUPPLIED WITH THE TOWER.

7. CUSTOM DESIGNS FOR SITE-SPECIFIC APPLICATIONS ARE AVAILABLE UPON RE□UEST.

8. INSTALL WARNING PLATE □B/N ACWS□IN A HIGHLY VISIBLE LOCATION.
9. ALL ANTENNA INSTALLATIONS MUST BE GROUNDED IN ACCORDANCE WITH LOCAL AND NATIONAL CODES.

10. FOR ADDITIONAL BRACING, GROUTING AND DRAINAGE DETAILS SEE DRAWING SK720305

11. FOR TAPERED TOP DETAILS SEE DRAWING SK670407

12. ALL TOWERS WITH 3WN TOP SECTIONS PROVIDED WITH □B/N 3TT□ TAPERED TOP.

13. ALL TOWERS WITH 3WNB TOP SECTION PROVIDED WITH □B/N 4TTN□ TAPERED TOP.

14. FOR STEP BOLT DETAILS SEE DRAWING B651264.

15. FOR FOUNDATION DETAILS SEE DRAWING DWG-0693 □B090548.

16. FOR ANCHORS AND SHORT BASE INSTALLATION SEE DRAWING NUMBERS B050439 AND CU730104.

FILE NO.

REVISIONS

REV.	DESCRIPTION	DWN	CHK	APP
4	REVISED GENERAL NOTES	JEC	MDF	HA
DATE: 6/17/2015				

ROHN

PRODUCTS

PO BOX 5999  
PEORIA, IL 61601-5999  
TOLL FREE 800-727-ROHN

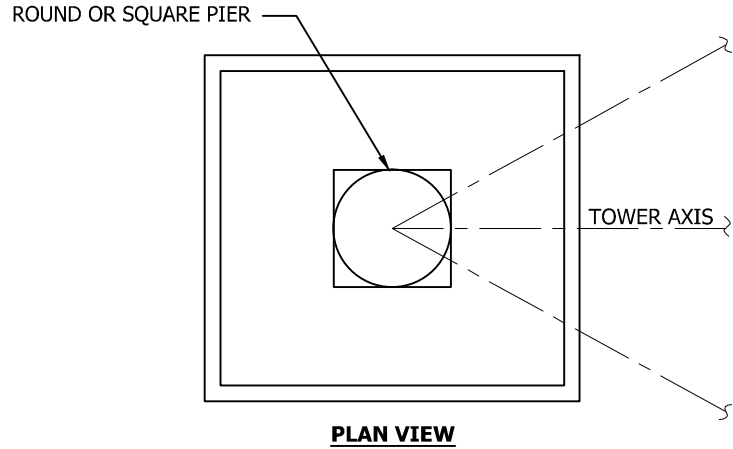
THIS DRAWING IS THE PROPERTY OF ROHN. IT IS NOT TO BE REPRODUCED, COPIED OR TRACED IN WHOLE OR IN PART WITHOUT OUR WRITTEN CONSENT.

ERECTION PROFILE  
HDSSV REV G 90 MPH 3-SEC, 3/4" ICE

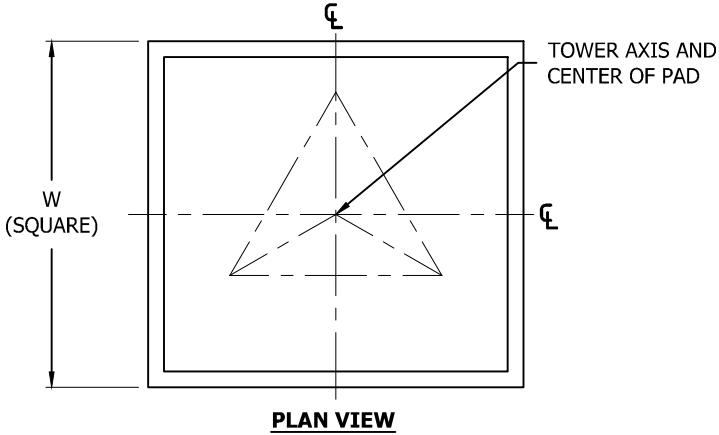
DWN:	CHK'D:	DATE:
CEJ	JDM	06/20/13
ENG'R:	SHEET #:	
HA	1 OF 1	
PRJ. ENG'R:	PRJ. MANG'R:	
DRAWING NO:		REV:
DWG-0805		4

SELF-SUPPORTING TOWER STANDARD FOUNDATIONS PER ANSI/TIA-222-G PRESUMPTIVE CLAY SOIL

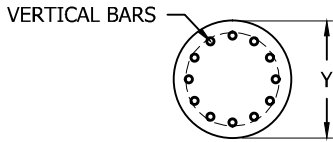
TOWER BASE SECTION	ANCHOR BOLT DATA						PIER & PAD						MAT		DRILLED PIER				
	LAYOUT DIMENSIONS			A-BOLTS 12- REQ'D OR SHORT BASE	BOLT CIRCLE DIA. INCHES	PROJ. INCHES	DIMENSIONS			VERTICAL BARS	HORIZONTAL BARS	REQ'D CONCRETE (cu.yds-3 fnds)		W	REQ'D CONCRETE (cu.yds)	DIMENSIONS		VERTICAL BARS	REQ'D CONCRETE (cu.yds-3 fnds)
	M	N	R				D	A	C			ROUND PIER	SQUARE PIER			D	Y		
3WN	-	-	-	SB3	3 1/2	-	-	-	-	-	-	-	-	6'-9"	6.8	-	-	-	-
4N	-	-	-	SB4	4 1/4	-	-	-	-	-	-	-	-	8'-0"	9.5	-	-	-	-
5N	-	-	-	SB5	4 1/4	-	-	-	-	-	-	-	-	8'-9"	11.3	-	-	-	-
6N62	4'-6 1/4"	3'-11"	2'-7 5/16"	5/8X42	4 15/16	3 1/2	-	-	-	-	-	-	-	10'-3"	15.6	-	-	-	-
7N165	6'-6 3/4"	5'-8 3/16"	3'-9 1/2"	5/8X42	4 15/16	3 1/2	8'-0"	4'-6"	2'-0"	(8) - #6	#6	6.3	6.9	11'-6"	19.6	-	-	-	-
8N106	8'-6 3/4"	7'-5"	4'-11 5/16"	5/8X42	4 15/16	3 1/2	8'-0"	5'-0"	2'-0"	(8) - #6	#7	7.3	7.9	14'-3"	30.1	15'-0"	2'-6"	(8) - #8	8.4
9N325/9N82	10'-6 3/4"	9'-1 3/4"	6'-1 3/16"	5/8X42	4 15/16	3 1/2	8'-0"	5'-6"	2'-0"	(8) - #6	#7	8.4	9	16'-0"	37.9	18'-0"	2'-6"	(8) - #8	10.2
10N387/10N183	12'-7 1/4"	10'-11"	7'-3 5/16"	3/4X48	5 21/32	4	8'-6"	5'-6"	2'-0"	(8) - #6	#7	8.6	9.2	18'-3	49.3	20'-0"	2'-6"	(8) - #8	11.1
11N332	14'-7 7/8"	12'-8 5/16"	8'-5 9/16"	7/8X60	7 1/16	5	9'-0"	6'-0"	2'-6"	(8) - #8	#7	11.4	12.6	-	-	22'-0"	2'-6"	(8) - #8	12.3
12N18	16'-8 3/8"	14'-5 9/16"	9'-7 11/16"	7/8X60	7 1/16	5	9'-0"	6'-6"	2'-6"	(8) - #8	#7	12.8	13.9	-	-	25'-0"	2'-6"	(8) - #8	13.9



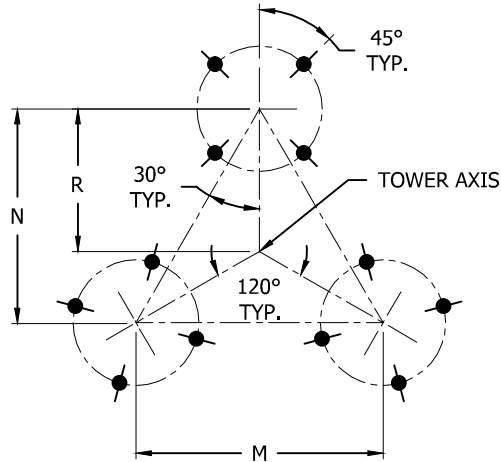
PLAN VIEW



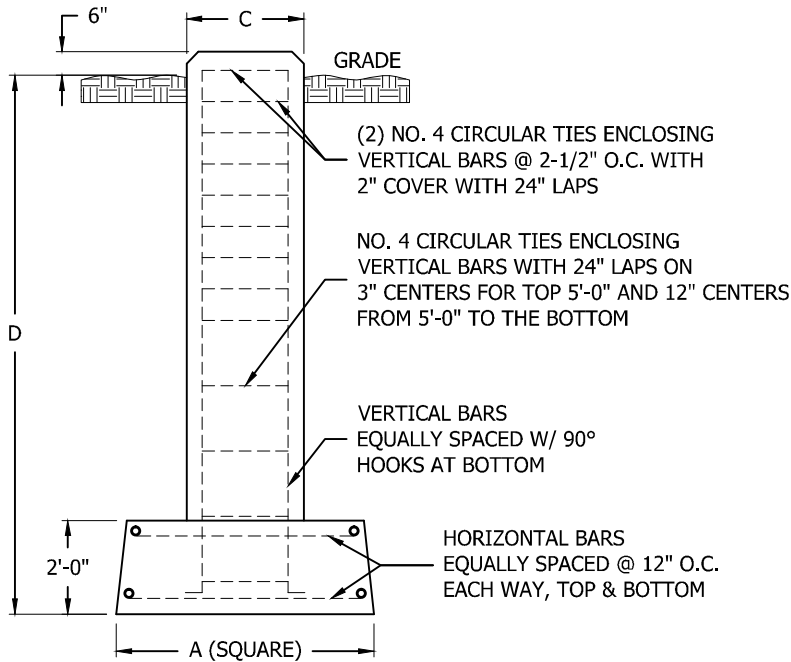
PLAN VIEW



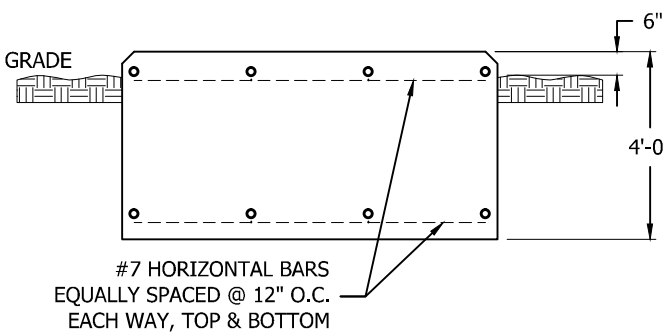
SECTION A-A



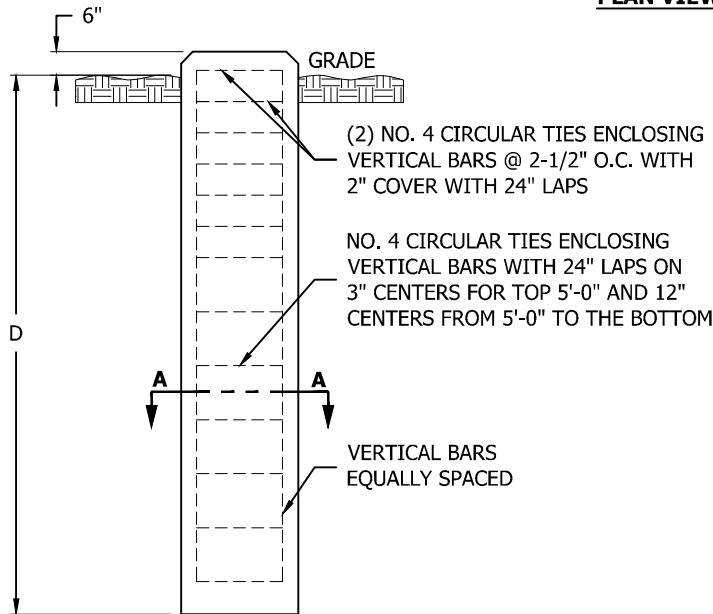
PLAN VIEW 6N THRU 12N



PIER & PAD ELEVATION VIEW



MAT ELEVATION VIEW



DRILLED PIER ELEVATION VIEW

SEE DRAWING B090548 FOR GENERAL FOUNDATION NOTES & DRAWING B050439 FOR ANCHOR BOLT LAYOUT

FILE NO.

REVISIONS				
REV.	DESCRIPTION	DWN	CHK	APP
3	ADDED 12N FOUNDATIONS	SM	HA	HA
DATE: 11/25/14				

**ROHN**  
PRODUCTS

PO BOX 5999  
PEORIA, IL 61601-5999  
TOLL FREE 800-727-ROHN

THIS DRAWING IS THE PROPERTY OF ROHN. IT IS NOT TO BE REPRODUCED, COPIED OR TRACED IN WHOLE OR IN PART WITHOUT OUR WRITTEN CONSENT.

SELF-SUPPORTING TOWER  
STANDARD FOUNDATIONS  
ANSI/TIA-222-G

DWN:	CEJ	CHK'D:	SM	DATE:	01/24/13
ENG'R:	HA	SHEET #:			
PRJ. ENG'R:		PRJ. MANG'R:			
DRAWING NO:					REV:
DWG-0693					3

STANDARD FOUNDATION NOTES  
ANSI/TIA-222-G

1. STANDARD FOUNDATION DESIGNS ARE IN ACCORDANCE WITH ANSI/TIA-222-G, "STRUCTURAL STANDARDS FOR STEEL ANTENNA TOWERS AND ANTENNA SUPPORTING STRUCTURES", SECTION 9 AND ANNEX F FOR THE FOLLOWING PRESUMPTIVE CLAY SOIL PARAMETERS:

N (blows/ft) [blows/m]	Φ (deg)	Y (lb/ft3) [kN/m3]	C (psf) [kPa]	Ultimate Bearing (psf) [kPa]		Ultimate Skin Friction (psf) [kPa]	k (pci) [kN/m3]	ε <sub>50</sub>
				Shallow Fnds.	Deep Fnds.			
8 [26]	0	110 [17]	1000 [48]	5000 [240]	9000 [431]	500 [24]	150 [41,000]	0.01

2. THE PURCHASER MUST VERIFY THAT ACTUAL SITE SOIL PARAMETERS MEET OR EXCEED ANSI/TIA-222-G PRESUMPTIVE CLAY SOIL DESIGN PARAMETERS AND THAT THE PENETRATION AND/OR ZONE OF SEASONAL MOISTURE VARIATION AT THE SITE. FOUNDATION DESIGN MODIFICATIONS MAY BE REQUIRED IN THE EVENT PRESUMPTIVE CLAY SOIL PARAMETERS ARE NOT APPLICABLE FOR THE ACTUAL SUBSURFACE CONDITIONS ENCOUNTERED.
3. A SITE-SPECIFIC INVESTIGATION IS REQUIRED FOR CLASS III STRUCTURES IN ACCORDANCE WITH ANSI/TIA-222-G.
4. FOUNDATION DESIGNS ASSUME FIELD INSPECTIONS WILL BE PERFORMED BY THE PURCHASER'S REPRESENTATIVE TO VERIFY THAT CONSTRUCTION MATERIALS, INSTALLATION METHODS AND ASSUMED DESIGN PARAMETERS ARE ACCEPTABLE BASED ON THE CONDITIONS EXISTING AT THE SITE.
5. WORK SHALL BE IN ACCORDANCE WITH LOCAL CODES, SAFETY REGULATIONS AND UNLESS OTHERWISE NOTED, THE LATEST REVISION OF ACI 318, "BUILDING CODE REQUIREMENTS FOR REINFORCED CONCRETE". PROCEDURES FOR THE PROTECTION OF EXCAVATIONS, EXISTING CONSTRUCTION AND UTILITIES SHALL BE ESTABLISHED PRIOR TO FOUNDATION INSTALLATION.
6. CONCRETE MATERIALS SHALL CONFORM TO THE APPROPRIATE STATE REQUIREMENTS FOR EXPOSED STRUCTURAL CONCRETE.
7. PROPORTIONS OF CONCRETE MATERIALS SHALL BE SUITABLE FOR THE INSTALLATION METHOD UTILIZED AND SHALL RESULT IN DURABLE CONCRETE FOR RESISTANCE TO LOCAL ANTICIPATED AGGRESSIVE ACTIONS. THE DURABILITY REQUIREMENT OF ACI 318 CHAPTER 4 SHALL BE SATISFIED BASED ON THE CONDITIONS EXPECTED AT THE SITE. AS A MINIMUM, CONCRETE SHALL DEVELOP A MINIMUM COMPRESSIVE STRENGTH OF 4500 PSI (31.0 MPa) IN 28 DAYS.
8. MAXIMUM SIZE OF AGGREGATE SHALL NOT EXCEED SIZE SUITABLE FOR INSTALLATION METHOD UTILIZED OR 1/3 CLEAR DISTANCE BEHIND OR BETWEEN REINFORCING. MAXIMUM SIZE MAY BE INCREASED TO 2/3 CLEAR DISTANCE PROVIDED WORKABILITY AND METHODS OF CONSOLIDATION SUCH AS VIBRATING WILL PREVENT HONEYCOMBS OR VOIDS.
9. REINFORCEMENT SHALL BE DEFORMED AND CONFORM TO THE REQUIREMENTS OF ASTM A615 GRADE 60 UNLESS OTHERWISE NOTED. SPLICES IN REINFORCEMENT SHALL NOT BE ALLOWED UNLESS OTHERWISE INDICATED.
10. REINFORCING CAGES SHALL BE BRACED TO RETAIN PROPER DIMENSIONS DURING HANDLING, THROUGHOUT PLACEMENT OF CONCRETE AND DURING EXTRACTION OF TEMPORARY CASING.
11. WELDING IS PROHIBITED ON REINFORCING STEEL AND EMBEDMENTS.

12. MINIMUM CONCRETE COVER FOR REINFORCEMENT SHALL BE 3 INCHES (76 mm) UNLESS OTHERWISE NOTED. APPROVED SPACERS SHALL BE USED TO INSURE A 3 INCH (76 mm) MINIMUM COVER ON REINFORCEMENT. CONCRETE COVER FROM TOP OF FOUNDATION TO ENDS OF VERTICAL REINFORCEMENT SHALL NOT EXCEED 3 INCHES (76 mm) NOR BE LESS THAN 2 INCHES (51 mm).
13. SPACERS SHALL BE ATTACHED INTERMITTENTLY THROUGHOUT THE ENTIRE LENGTH OF VERTICAL REINFORCING CAGES TO INSURE CONCENTRIC PLACEMENT OF CAGES IN EXCAVATIONS.
14. FOUNDATION DESIGNS ASSUME STRUCTURAL BACKFILL TO BE COMPACTED IN 8 INCH (200 mm) MAXIMUM LAYERS TO 95% OF MAXIMUM DRY DENSITY AT OPTIMUM MOISTURE CONTENT IN ACCORDANCE WITH ASTM D698. ADDITIONALLY, STRUCTURAL BACKFILL MUST HAVE A MINIMUM COMPACTED UNIT WEIGHT OF 100 POUNDS PER CUBIC FOOT (16 kN/m3).
15. FOUNDATION DESIGNS ASSUME LEVEL GRADE AT THE SITE.
16. FOUNDATION INSTALLATION SHALL BE SUPERVISED BY PERSONNEL KNOWLEDGEABLE AND EXPERIENCED WITH THE PROPOSED FOUNDATION TYPE. CONSTRUCTION SHALL BE IN ACCORDANCE WITH GENERALLY ACCEPTED INSTALLATION PRACTICES.
17. FOR FOUNDATION AND ANCHOR TOLERANCES SEE DRAWING A810214.
18. LOOSE MATERIAL SHALL BE REMOVED FROM BOTTOM OF EXCAVATION PRIOR TO CONCRETE PLACEMENT. SIDES OF EXCAVATION SHALL BE ROUGH AND FREE OF LOOSE CUTTINGS.
19. CONCRETE SHALL BE PLACED IN A MANNER THAT WILL PREVENT SEGREGATION OF CONCRETE MATERIALS, INFILTRATION OF WATER OR SOIL AND OTHER OCCURRENCES WHICH MAY DECREASE THE STRENGTH OR DURABILITY OF THE FOUNDATION.
20. FREE FALL CONCRETE MAY BE USED PROVIDED FALL IS VERTICAL DOWN WITHOUT HITTING SIDES OF EXCAVATION, FORMWORK, REINFORCING BARS, FORM TIES, CAGE BRACING OR OTHER OBSTRUCTIONS. UNDER NO CIRCUMSTANCES SHALL CONCRETE FALL THROUGH WATER.
21. CONCRETE SHALL BE PLACED AGAINST UNDISTURBED SOIL EXCEPT FOR PIERS OR PIER AND PAD FOUNDATIONS. FORMS FOR PIERS SHALL BE REMOVED PRIOR TO PLACING STRUCTURAL BACKFILL.
22. CONSTRUCTION JOINTS, IF REQUIRED IN PIER MUST BE AT LEAST 12 INCHES (305 mm) BELOW BOTTOM OF EMBEDMENTS AND MUST BE INTENTIONALLY ROUGHENED TO A FULL AMPLITUDE OF 1/4 INCH (6 mm). FOUNDATION DESIGN ASSUMES NO OTHER CONSTRUCTION JOINTS.
23. CASING, IF USED, SHALL NOT BE LEFT IN PLACE. EQUIPMENT, PROCEDURES, AND PROPORTIONS OF CONCRETE MATERIALS SHALL INSURE CONCRETE WILL NOT BE ADVERSELY DISTURBED UPON CASING REMOVAL. DRILLING FLUID, IF USED, SHALL BE FULLY DISPLACED BY CONCRETE AND SHALL NOT BE DETRIMENTAL TO CONCRETE OR SURROUNDING SOIL. CONTAMINATED CONCRETE SHALL BE REMOVED FROM TOP OF FOUNDATION AND REPLACED WITH FRESH CONCRETE.
24. TOP OF FOUNDATION SHALL BE SLOPED TO DRAIN WITH A FLOATED FINISHED. EXPOSED EDGES OF CONCRETE SHALL BE CHAMFERED 3/4" X 3/4" (19 mm X 19 mm) MINIMUM.
25. FOR ANCHOR BLOCK TYPE FOUNDATIONS, FOR GUYED TOWERS, ADDITIONAL CORROSION PROTECTION MAY BE REQUIRED FOR STEEL GUY ANCHORS IN DIRECT CONTACT WITH SOIL. DESIGN ASSUMES PERIODIC INSPECTIONS WILL BE PERFORMED OVER THE LIFE OF THE STRUCTURE TO DETERMINE IF ADDITIONAL ANCHOR CORROSION PROTECTION MEASURES MUST BE IMPLEMENTED BASED ON OBSERVED SITE-SPECIFIC CONDITIONS.

FILE NO.

REVISIONS

REV.	DESCRIPTION	DWN	CHK	APP
2	REVISED NOTE 7 TO 4500 PSI  DATE: 2/10/2014	JHY	HA	HA

ROHN

PRODUCTS

PO BOX 5999

PEORIA, IL 61601-5999

TOLL FREE 800-727-ROHN

THIS DRAWING IS THE PROPERTY OF ROHN. IT IS NOT TO BE REPRODUCED, COPIED OR TRACED IN WHOLE OR IN PART WITHOUT OUR WRITTEN CONSENT.

ANSI/TIA-222-G  
STANDARD FOUNDATION NOTES

DWN:	CHK'D:	DATE:
FAD	HA	Nov/20/2009
ENG'R:	SHEET #:	
HA	1 OF 1	
PRJ. ENG'R:	PRJ. MANG'R:	
DRAWING NO:		REV:
B090548		2

## FOUNDATION AND ANCHOR TOLERANCES

## ALL FOUNDATIONS

1. CONCRETE DIMENSIONS: PLUS OR MINUS 1" (25mm)
2. DEPTH OF FOUNDATION: PLUS 3" (76mm) OR MINUS 0"
3. DRILLED FOUNDATIONS OUT OF PLUMB: 1.0°
4. REINFORCING STEEL PLACEMENT: PER A.C.I. 301
5. PROJECTION OF EMBEDMENTS: PLUS OR MINUS 1/8" (3mm)
6. VERTICAL EMBEDMENTS OUT OF PLUMB: 0.5°

## ANCHOR BOLTS

7. MAXIMUM DISTANCE FROM CENTERLINE OF ANCHOR BOLTS TO CENTERLINE OF FOUNDATION: 1/24 OF PIER DIAMETER UP TO A MAXIMUM OF 2" (51mm)
8. ANCHOR BOLT SPACING: 1/16" (2mm)
9. ANCHOR BOLT CIRCLE ORIENTATION: 0.25°
10. ANCHOR BOLT CIRCLE DIAMETER: PLUS OR MINUS 1/16" (2mm)

## SELF-SUPPORTING TOWERS

11. FACE SPREAD DIMENSION CENTER TO CENTER OF ANCHOR BOLT CIRCLES: PLUS OR MINUS 1/16" (2mm) OR 1/16" (2mm) PER 20 FT. (6m) OF FACE SPREAD
12. MAXIMUM DIFFERENCE BETWEEN ANY TWO FOUNDATION ELEVATIONS: 1/2" (13mm)

## GUYED TOWERS

13. GUY RADIUS: PLUS OR MINUS 5% OF DISTANCE SPECIFIED
14. ANCHOR ELEVATION: PLUS OR MINUS 5% OF GUY RADIUS
15. ANCHOR ALIGNMENT (PERPENDICULAR TO GUY RADIUS): 1.0°
16. ANCHOR ROD SLOPE: PLUS OR MINUS 1.0°
17. ANCHOR ROD ALIGNMENT WITH GUY RADIUS: PLUS OR MINUS 1.0°
18. ANCHOR HEAD OUT OF PLUMB: 1.0°
19. GUY INITIAL TENSION: PLUS OR MINUS 10% OF TENSION SPECIFIED

NOTE: TOLERANCES IN NOTES 13 AND 14 CAN NOT OCCUR SIMULTANEOUSLY.

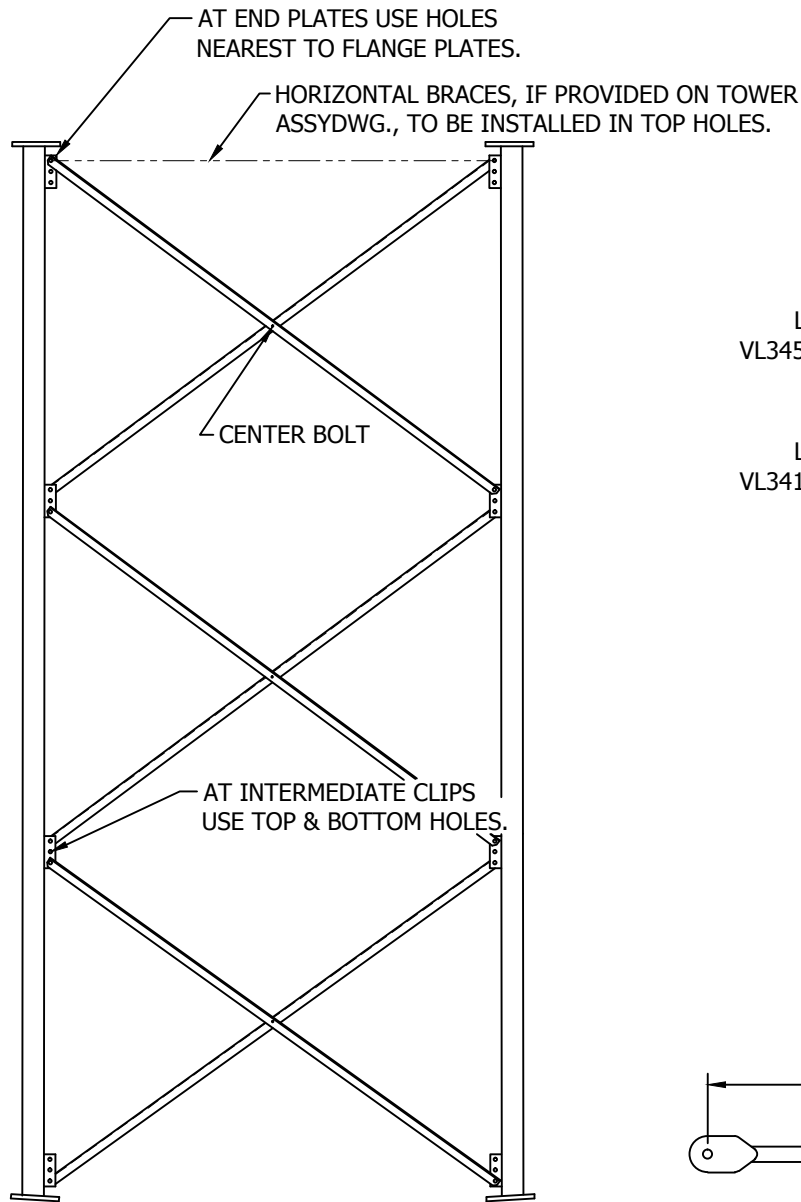
## WARNING!!!

AFTER ANCHOR BOLTS ARE INSTALLED IN CONCRETE HAS TAKEN ITS INITIAL SET, ANCHOR BOLTS MUST NOT BE MOVED, BENT OR REALIGNED IN ANY MANNER. A NUT LOCKING DEVICE MUST BE INSTALLED ON ALL ANCHOR BOLTS.

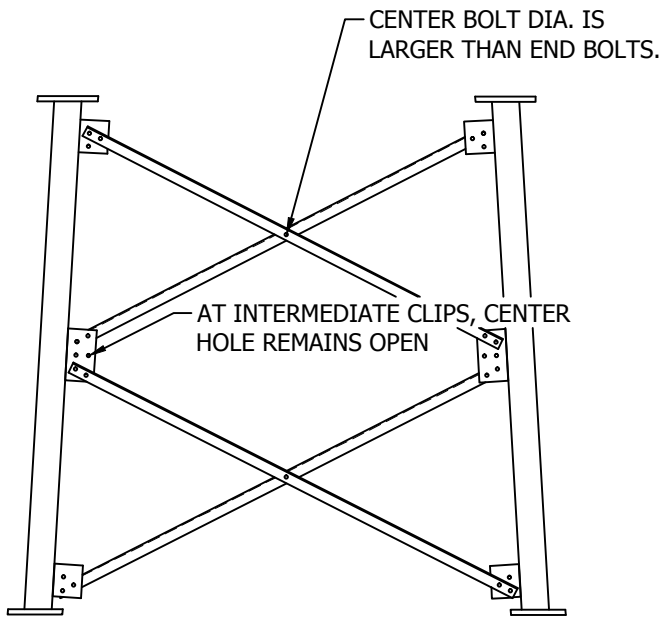
FILE NO.				
REVISIONS				
REV.	DESCRIPTION	DWN	CHK	APP
9	UPDATED TITLE BLOCK  DATE: 05/13/2015	JHY	JDM	HA
 <p>PO BOX 5999 PEORIA, IL 61601-5999 TOLL FREE 800-727-ROHN</p>				
THIS DRAWING IS THE PROPERTY OF ROHN. IT IS NOT TO BE REPRODUCED, COPIED OR TRACED IN WHOLE OR IN PART WITHOUT OUR WRITTEN CONSENT.				
FOUNDATION & ANCHOR TOLERANCE				
DWN: CSR		CHK'D: KTL	DATE: 09/25/1987	
ENG'R: XK		SHEET #: 1 OF 1		
PRJ. ENG'R:		PRJ. MANG'R:		
DRAWING NO: A810214				REV: 9





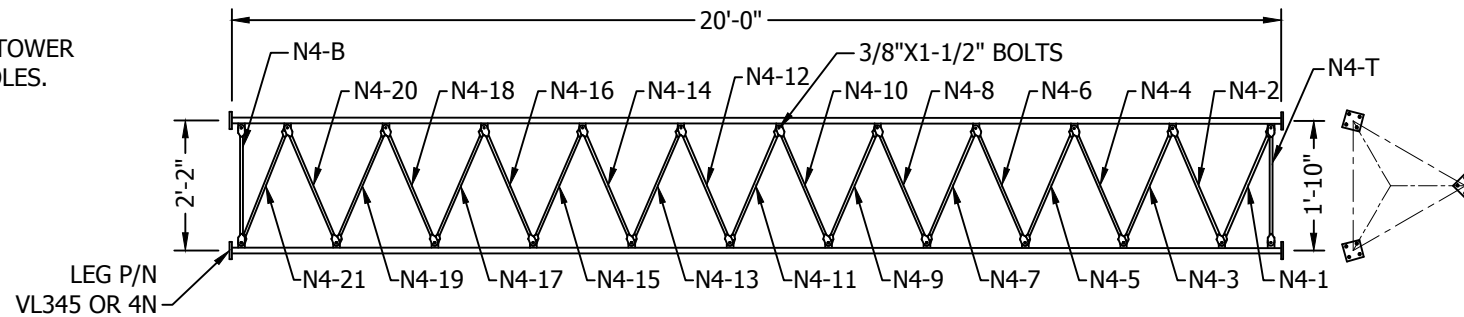


TYPICAL ONE BOLT, BRACE CONNECTION DETAIL

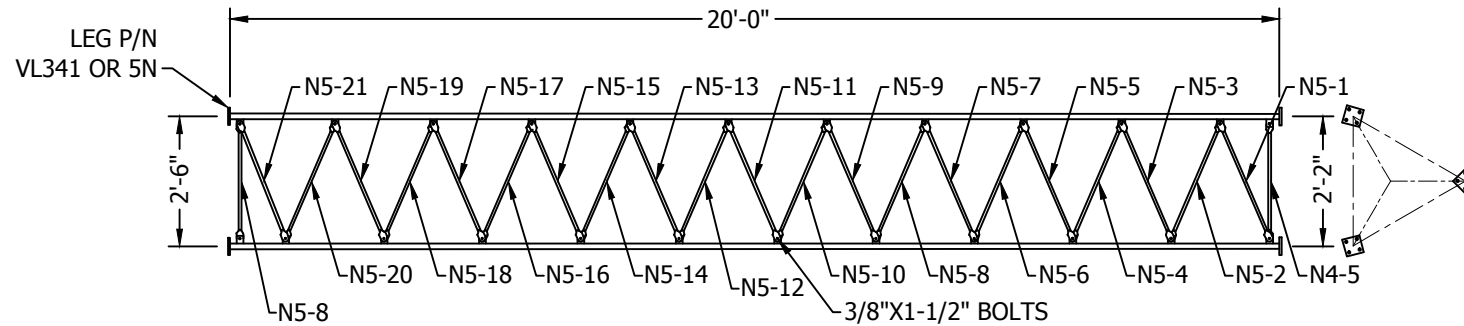


TYPICAL TWO-BOLT, BRACE CONNECTION DETAIL

NOTE: SECTIONS SHOULD BE ASSEMBLED ON EVEN GROUND & LEVELED TO INSURE STRAIGHTNESS

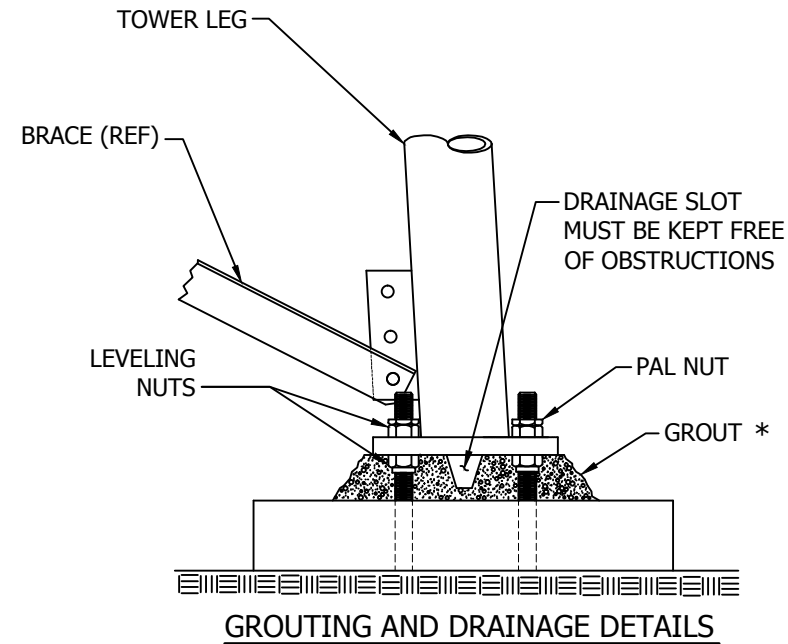
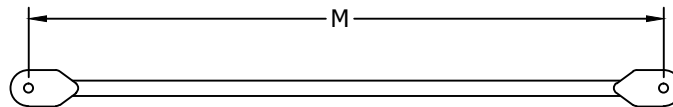


SECTION 4N



SECTION 5N

IMPORTANT: LEG P/N IS STAMPED AT BOTTOM OF BASE FLANGE PLATE OF EACH SECTION LEG.



\* GROUT MUST BE STRUCTURAL & MUST BE 5000 PSI (34.5 MPa) MINIMUM ULTIMATE STRENGTH NON-SHRINK & NON-METALLIC OR APPROVED EQUAL AND INSTALLED ACCORDING TO MANUFACTURER'S RECOMMENDATIONS.

SECTION 4N		SECTION 5N	
P/N	M	P/N	M
N4-1	21 3/8"	N5-1	24 3/4"
N4-2	21 15/16"	N5-2	25 1/4"
N4-3	22 1/16"	N5-3	25 7/16"
N4-4	22 1/4"	N5-4	25 5/8"
N4-5	22 3/8"	N5-5	25 3/4"
N4-6	22 9/16"	N5-6	25 15/16"
N4-7	22 3/4"	N5-7	26 1/8"
N4-8	22 7/8"	N5-8	26 1/4"
N4-9	23 1/16"	N5-9	26 7/16"
N4-10	23 3/16"	N5-10	26 5/8"
N4-11	23 3/8"	N5-11	26 3/4"
N4-12	23 9/16"	N5-12	26 15/16"
N4-13	23 11/16"	N5-13	27 1/8"
N4-14	23 7/8"	N5-14	27 5/16"
N4-15	24 1/16"	N5-15	27 7/16"
N4-16	24 3/16"	N5-16	27 5/8"
N4-17	24 3/8"	N5-17	27 13/16"
N4-18	24 9/16"	N5-18	28"
N4-19	24 11/16"	N5-19	28 1/8"
N4-20	24 7/8"	N5-20	28 5/16"
N4-21	25 1/16"	N5-21	28 1/2"
N4-T	18 9/16"		
N4-B	22 1/2"		

FILE NO.

Standard-SSV

REVISIONS

REV.	DESCRIPTION	DWN	CHK	APP
8	VL341 WAS VL346 DATE: Mar/21/2006	M.F	JDM	H.A

DWG REFERENCE

**ROHN**  
PRODUCTS

6718 WEST PLANK ROAD  
PEORIA, IL 61604  
TOLL FREE 800-727-ROHN

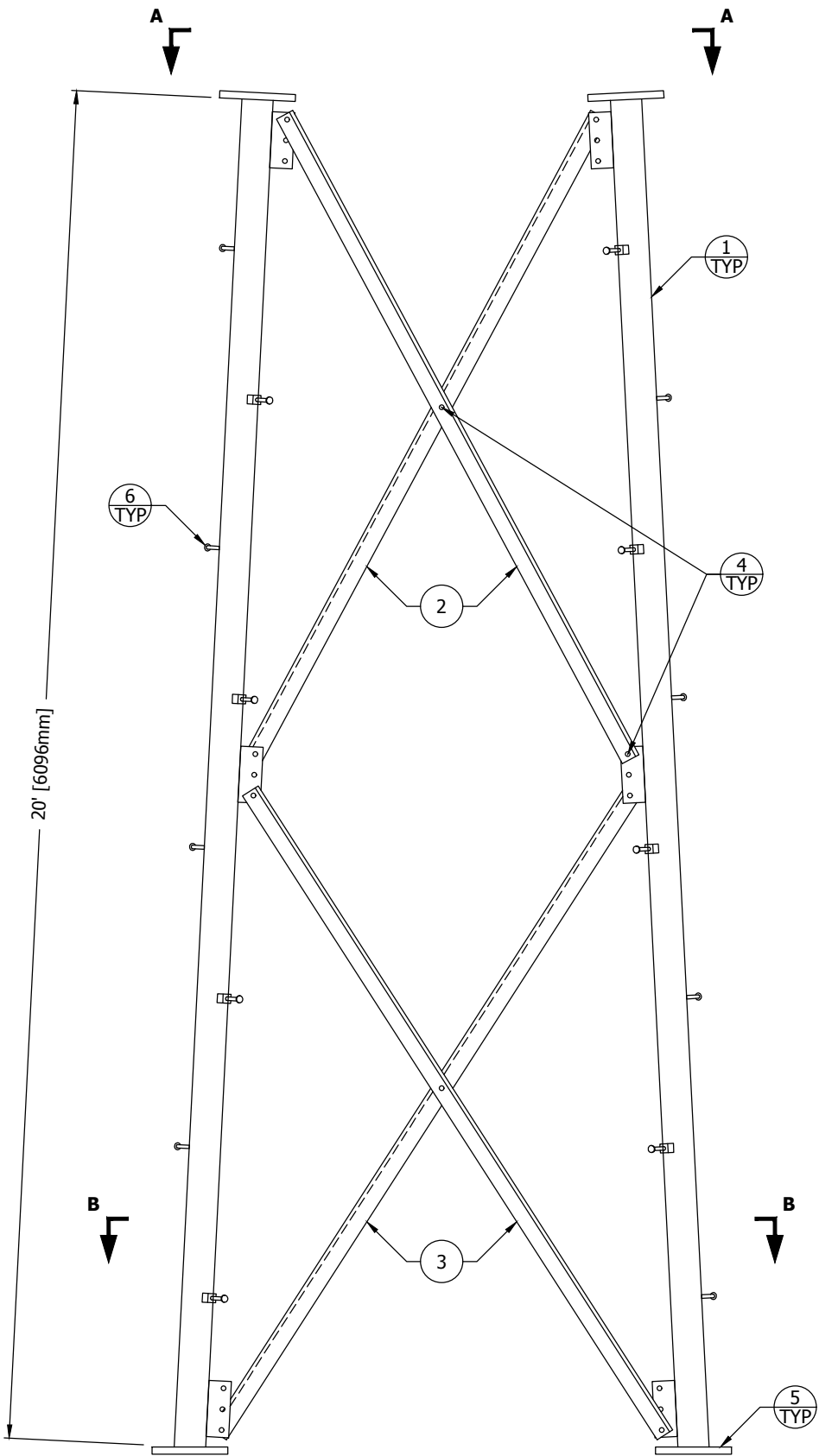
THIS DRAWING IS THE PROPERTY OF ROHN. IT IS NOT TO BE REPRODUCED, COPIED OR TRACED IN WHOLE OR IN PART WITHOUT OUR WRITTEN CONSENT.

TOWER PROFILE  
GROUTING & DRAINAGE DETAIL

DWN:	CHK'D:	DATE:
O.H	WDU	Mar/03/1972

ENGR:	
TWS	

DRAWING NO:	REV:
SK720305	8

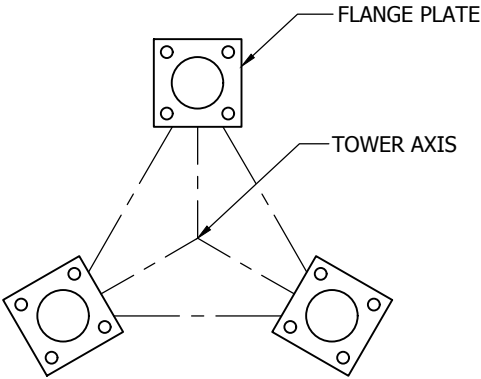


ELEVATION VIEW

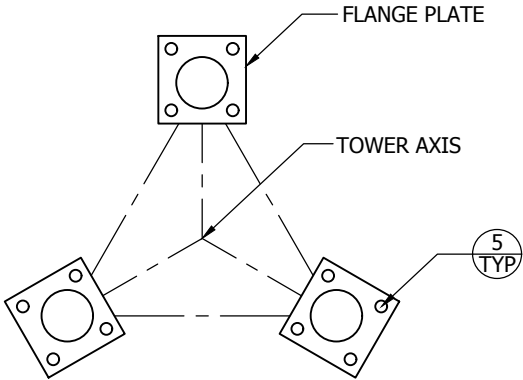
FLANGE	OFFSET	BEVEL	FLANGE PLATE (P/N)	SPREAD
TOP	N/A	N/A	7" X 7" X 1" (P/N: 7F)	14'-7 7/8" [4467mm]
BOTTOM	1/4" [6mm]	3 1/3° STD	7" X 7" X 1" (P/N: 7H)	16'-8 3/8" [5090mm]

SECTION ASSEMBLY P/N: 12N18				
BILL OF MATERIAL				
ITEM	PART NO.	QTY	DESCRIPTION	
1	VL563	3	LEG SSV 12-16N 3.5EH 20'77OFF	[PIPE 89mm EH]
2	N121	6	BRACE DS SS12T L3X.19X17.58'	[L 76x76x5]
3	N122	6	BRACE DS SS12T L3X.19X18.31'	[L 76x76x5]
4	210029GA	30	BOLT ASSY 5/8 X 1-1/2 HSB A325	[M16x38]
5	110163	12	NUT 7/8 ( JAM - PAL ) HDG	[M22]
6	5/8STEP	48	BOLT ASSY STEP 5/8X7 W/DBN	[M16x178]

- GENERAL NOTES:**
- LEG PART NUMBER IS STAMPED AT THE BOTTOM OF EACH LEG AND MUST BE LOCATED AT THE BOTTOM OF THE SECTION FOR PROPER ASSEMBLY.
  - STEP BOLTS ARE PROVIDED ON ONE LEG ONLY.
  - THIS SECTION IS A BASE SECTION. SEE THE TOWER ASSEMBLY FOR ANCHOR BOLTS. PAL NUTS ARE SUPPLIED FOR THE ANCHOR BOLTS.
  - DRAWING IS N.T.S. AND IS FOR ASSEMBLY PURPOSES ONLY.
  - NOMINAL METRIC EQUIVALENTS ARE GIVEN FOR REFERENCE ONLY AND SHALL NOT BE SUBSTITUTED FOR THE DESCRIBED SIZES UNLESS OTHERWISE APPROVED BY ROHN PRODUCTS.



VIEW A-A



VIEW B-B

FILE NO.

REVISIONS

REV.	DESCRIPTION	DWN	CHK	APP
3	REDRAWN	JHY	CEJ	HA
DATE: 11/13/2012				

ROHN

PRODUCTS

PO BOX 5999  
PEORIA, IL 61601-5999  
TOLL FREE 800-727-ROHN

THIS DRAWING IS THE PROPERTY OF ROHN. IT IS NOT TO BE REPRODUCED, COPIED OR TRACED IN WHOLE OR IN PART WITHOUT OUR WRITTEN CONSENT.

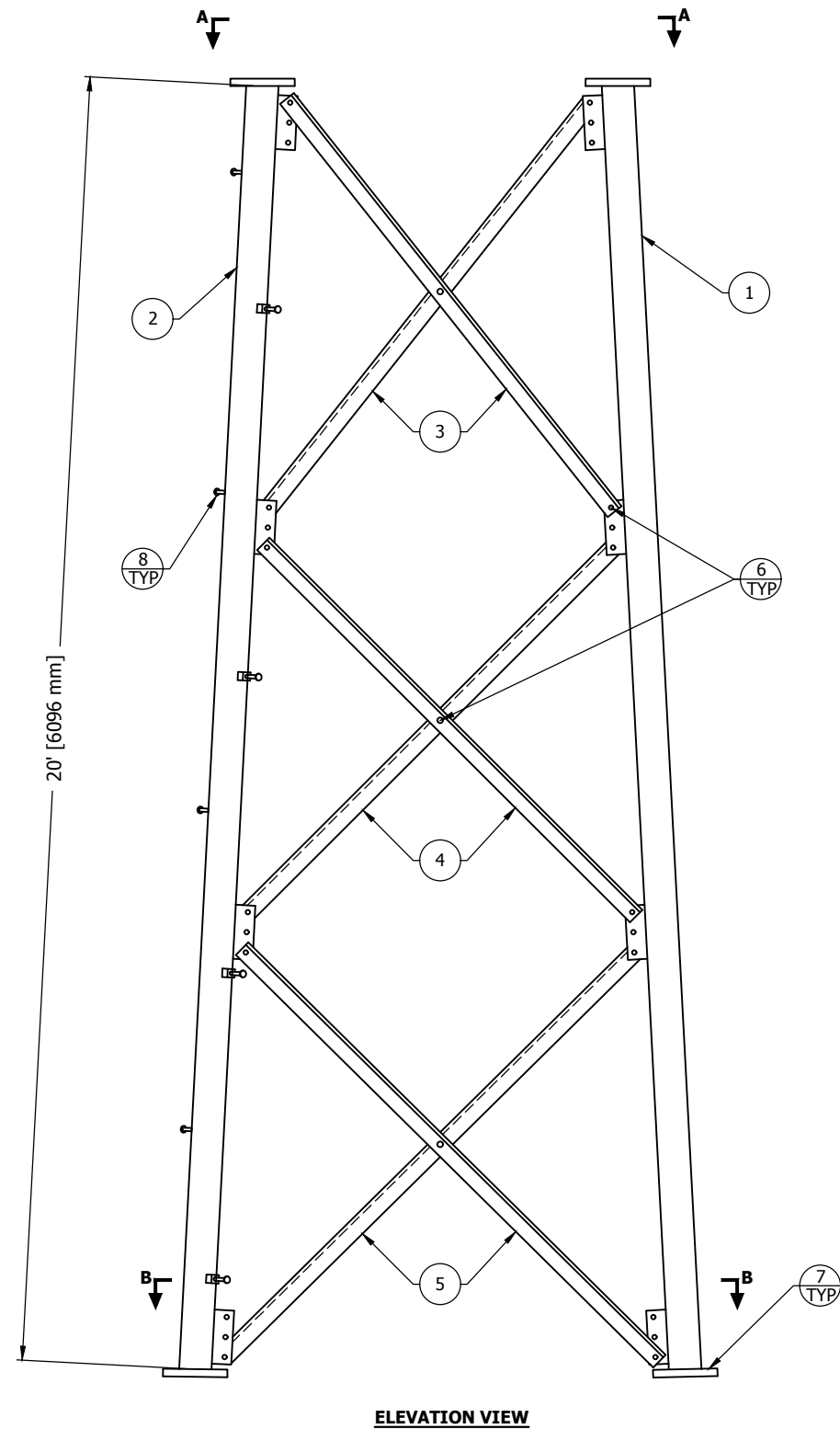
SECTION ASSEMBLY  
DETAILS FOR SSV 12N18

DWN:	CHK'D:	DATE:
AED	JHD	Feb/5/1979

ENG'R:	SHEET #:
TS	1 OF 1

PRJ. ENG'R:	PRJ. MANG'R:

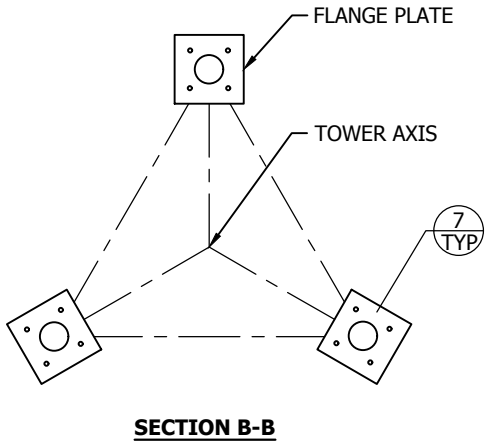
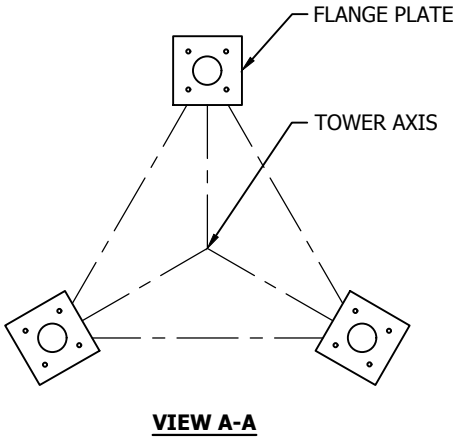
DRAWING NO:	REV:
A790023	3



FLANGE	OFFSET	BEVEL	FLANGE PLATE (P/N)	SPREAD
TOP	N/A	N/A	6" X 6" X 3/4" (P/N: 6C)	12'-7 1/4" [3842MM]
BOTTOM	1/4" [6MM]	N/A	7" X 7" X 1" (P/N: 7A)	14'-7 7/8" [4467MM]

SECTION ASSEMBLY P/N: 11N				
BILL OF MATERIAL				
ITEM	PART NO.	QTY	DESCRIPTION	
1	VL352	2	LEG SSV 9-11N 3STD 20' 6 7 OFF	[PIPE 76MM STD]
2	VL352S	1	LEG SSV 9-11N 3STD 20' 6 7 OFF	[PIPE 76MM STD]
3	N111	6	BRACE DS SS11T L2.5X.19X14.04'	[L 64X64X5]
4	N112	6	BRACE DS SS11T L2.5X.19X14.64'	[L 64X64X5]
5	N113	6	BRACE DS SS11T L2.5X.19X15.16'	[L 64X64X5]
6	210017GA	45	BOLT ASSY 1/2 X 1-1/4 HSB A325	[M13X32]
7	210063GA	12	BOLT ASSY 7/8 X 3-1/2 HSB A325	[M22X89]
8	5/8STEP	16	BOLT ASSY STEP 5/8X7 W/DBN	[M16X178]

- GENERAL NOTES:**
- LEG PART NUMBER IS STAMPED AT THE BOTTOM OF EACH LEG AND MUST BE LOCATED AT THE BOTTOM OF THE SECTION FOR PROPER ASSEMBLY.
  - STEP BOLTS ARE PROVIDED ON ONE LEG ONLY.
  - FLANGE BOLTS ARE FOR FLANGE PLATES AT THE BOTTOM OF THE SECTION.
  - DRAWING IS N.T.S. AND IS FOR ASSEMBLY PURPOSES ONLY.
  - NOMINAL METRIC EQUIVALENTS ARE GIVEN FOR REFERENCE ONLY AND SHALL NOT BE SUBSTITUTED FOR THE DESCRIBED SIZES UNLESS OTHERWISE APPROVED BY ROHN PRODUCTS.



FILE NO.

REVISIONS

REV.	DESCRIPTION	DWN	CHK	APP
3	REDRAWN IN AUTOCAD	CEJ	KTL	HA
DATE: 11/08/11				

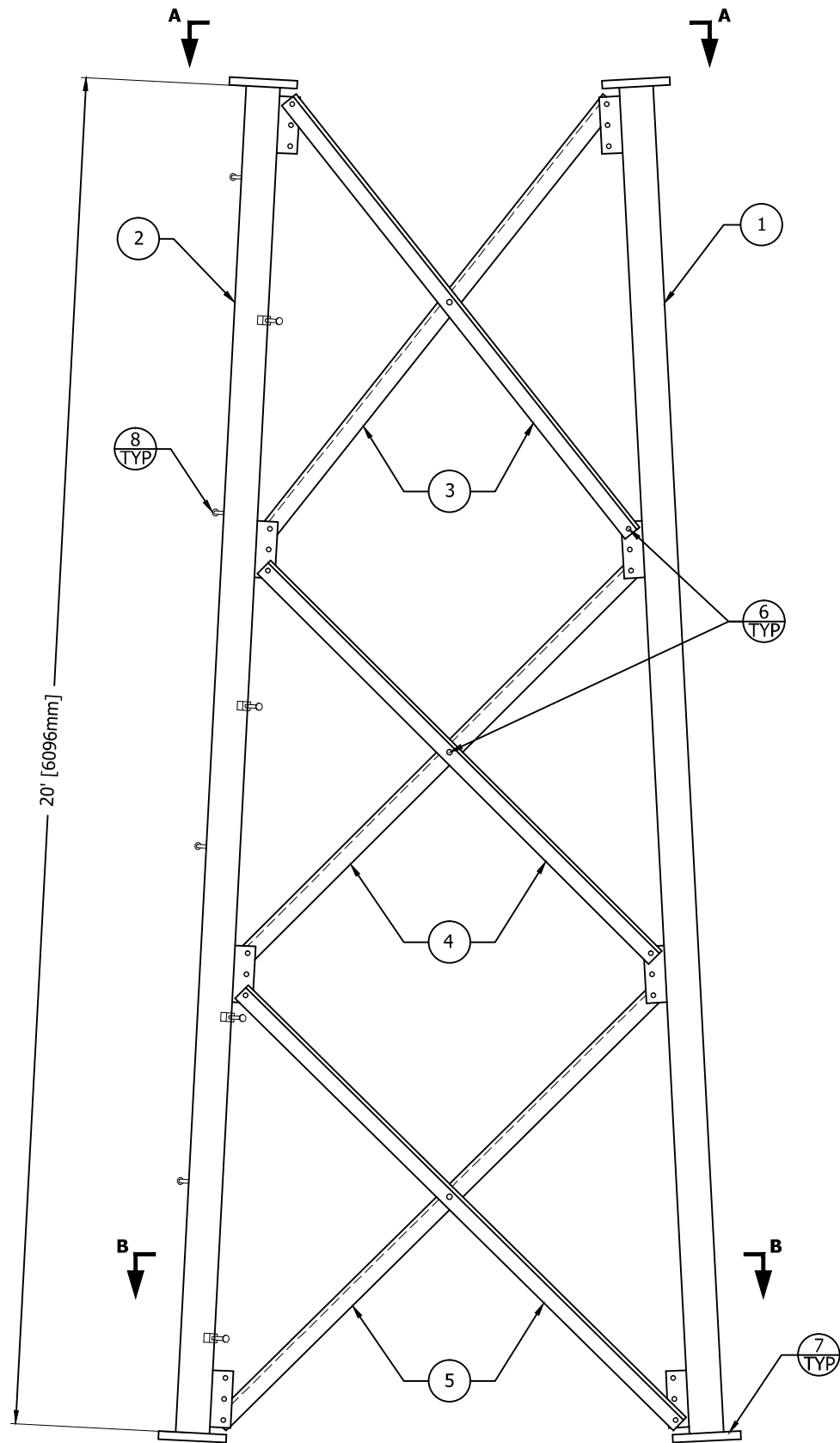
PO BOX 5999  
PEORIA, IL 61601-5999  
TOLL FREE 800-727-ROHN

THIS DRAWING IS THE PROPERTY OF ROHN. IT IS NOT TO BE REPRODUCED, COPIED OR TRACED IN WHOLE OR IN PART WITHOUT OUR WRITTEN CONSENT.

SECTION ASSEMBLY  
DETAILS FOR SSV 11N

DWN:	CHK'D:	DATE:
AED	JHD	12/11/78
ENG'R:	SHEET #:	
TS	1 OF 1	
DRAWING NO:		REV:
A780447		3



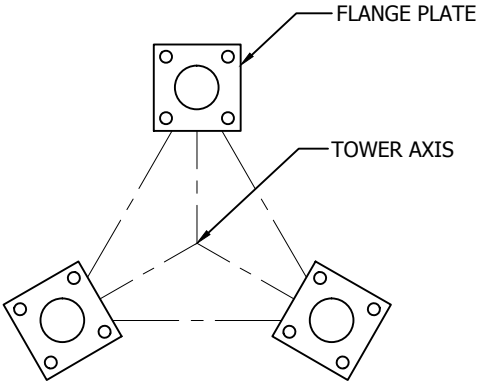


ELEVATION VIEW

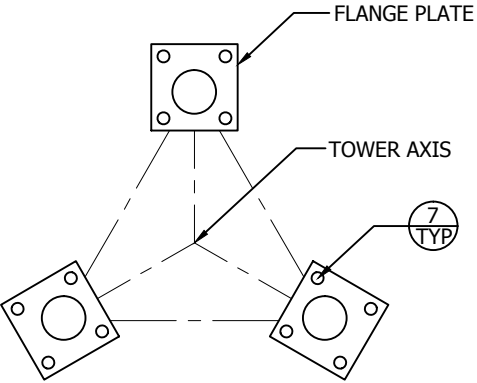
FLANGE	OFFSET	BEVEL	FLANGE PLATE (P/N)	SPREAD
TOP	N/A	N/A	5" X 5" X 3/4" (P/N: 5C)	10'-6 3/4" [3219mm]
BOTTOM	1/4" [6mm]	N/A	6" X 6" X 3/4" (P/N: 6A)	12'-7 1/4" [3842mm]

SECTION ASSEMBLY P/N: 10NH				
BILL OF MATERIAL				
ITEM	PART NO.	QTY	DESCRIPTION	
1	VL351	2	LEG SSV 9-11N 2.5EH 20' 5 6OF	[PIPE 64mm EH]
2	VL351S	1	LEG SSV 9-11N 2.5EH 20' 5 6OF	[PIPE 64mm EH]
3	N101	6	BRACE DS SS10T L2X.13X12.29'	[L 51x51x3
4	N102	6	BRACE DS SS10T L2X.13X12.86'	[L 51x51x3]
5	N103	6	BRACE DS SS10T L2X.13X13.35'	[L 51x51x3]
6	210017GA	45	BOLT ASSY 1/2 X 1-1/4 HSB A325	[M13x32]
7	210050GA	12	BOLT ASSY 3/4 X 2-3/4 HSB A325	[M19x70]
8	5/8STEP	16	BOLT ASSY STEP 5/8X7 W/DBN	[M16x178]

- GENERAL NOTES:**
- LEG PART NUMBER IS STAMPED AT THE BOTTOM OF EACH LEG AND MUST BE LOCATED AT THE BOTTOM OF THE SECTION FOR PROPER ASSEMBLY.
  - STEP BOLTS ARE PROVIDED ON 1 LEG ONLY.
  - FLANGE BOLTS ARE FOR FLANGE PLATES AT THE BOTTOM OF THE SECTION.
  - DRAWING IS N.T.S. AND IS FOR ASSEMBLY PURPOSES ONLY.
  - NOMINAL METRIC EQUIVALENTS ARE GIVEN FOR REFERENCE ONLY AND SHALL NOT BE SUBSTITUTED FOR THE DESCRIBED SIZES UNLESS OTHERWISE APPROVED BY ROHN PRODUCTS.



VIEW A-A



VIEW B-B

FILE NO.

REVISIONS

REV.	DESCRIPTION	DWN	CHK	APP
2	REDRAWN	JHY	JDM	HA
DATE: Aug/9/2012				

ROHN

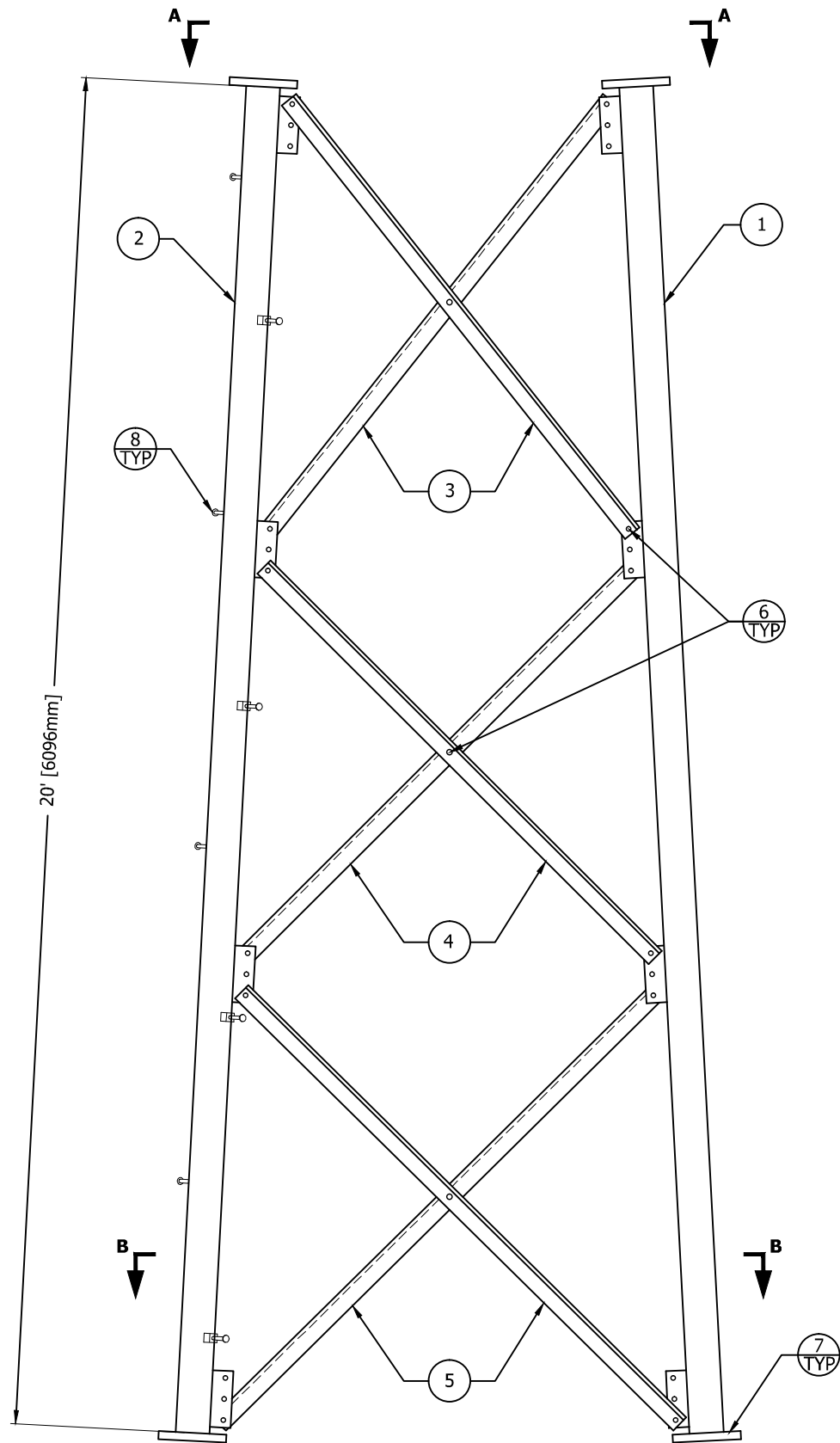
PRODUCTS

PO BOX 5999  
PEORIA, IL 61601-5999  
TOLL FREE 800-727-ROHN

THIS DRAWING IS THE PROPERTY OF ROHN. IT IS NOT TO BE REPRODUCED, COPIED OR TRACED IN WHOLE OR IN PART WITHOUT OUR WRITTEN CONSENT.

SECTION ASSEMBLY  
DETAILS FOR SSV 10NH

DWN:	CHK'D:	DATE:
AED	HSK	Nov/2/1978
ENG'R:	SHEET #:	
TWS	1 OF 1	
PRJ. ENG'R:	PRJ. MANG'R:	
DRAWING NO:		REV:
A780386		2

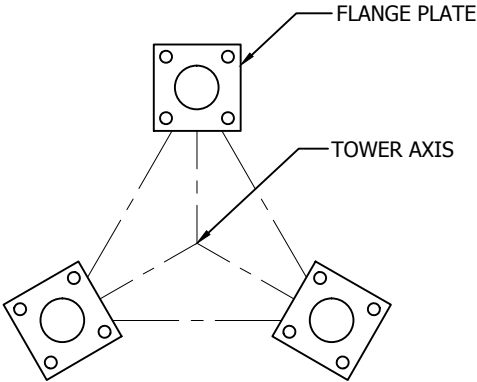


ELEVATION VIEW

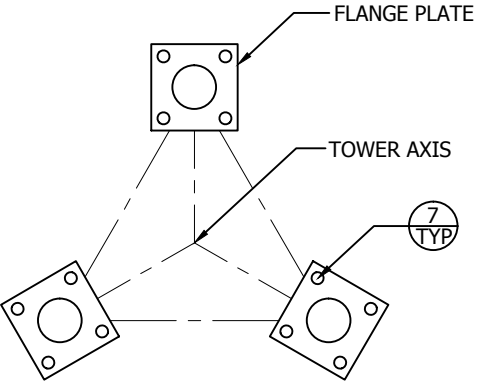
FLANGE	OFFSET	BEVEL	FLANGE PLATE (P/N)	SPREAD
TOP	N/A	N/A	5" X 5" X 3/4" (P/N: 5C)	8'-6 3/4" [2610mm]
BOTTOM	N/A	N/A	5" X 5" X 3/4" (P/N: 5C)	10'-6 3/4" [3219mm]

SECTION ASSEMBLY P/N: 9NH				
BILL OF MATERIAL				
ITEM	PART NO.	QTY	DESCRIPTION	
1	VL350	2	LEG SSV 9-11N 2.5EH 20' 5 5 S9	[PIPE 64mm EH]
2	VL350S	1	LEG SSV 9-11N 2.5EH 20' 5 5 S9	[PIPE 64mm EH]
3	N91	6	BRACE DS SS9T L1.75X.13X10.63'	[L 44x44x3]
4	N92	6	BRACE DS SS9T L1.75X.13X11.17'	[L 44x44x3]
5	N93	6	BRACE DS SS9T L1.75X.13X11.61'	[L 44x44x3]
6	210017GA	45	BOLT ASSY 1/2 X 1-1/4 HSB A325	[M13x32]
7	210033GA	12	BOLT ASSY 5/8 X 2-1/2 HSB A325	[M16x64]
8	5/8STEP	16	BOLT ASSY STEP 5/8X7 W/DBN	[M16x178]

- GENERAL NOTES:**
- LEG PART NUMBER IS STAMPED AT THE BOTTOM OF EACH LEG AND MUST BE LOCATED AT THE BOTTOM OF THE SECTION FOR PROPER ASSEMBLY.
  - STEP BOLTS ARE PROVIDED ON 1 LEG ONLY.
  - FLANGE BOLTS ARE FOR FLANGE PLATES AT THE BOTTOM OF THE SECTION.
  - DRAWING IS N.T.S. AND IS FOR ASSEMBLY PURPOSES ONLY.
  - NOMINAL METRIC EQUIVALENTS ARE GIVEN FOR REFERENCE ONLY AND SHALL NOT BE SUBSTITUTED FOR THE DESCRIBED SIZES UNLESS OTHERWISE APPROVED BY ROHN PRODUCTS.



VIEW A-A



VIEW B-B

FILE NO.

REVISIONS

REV.	DESCRIPTION	DWN	CHK	APP
4	REDRAWN	JHY	JDM	HA
DATE: Aug/9/2012				

ROHN

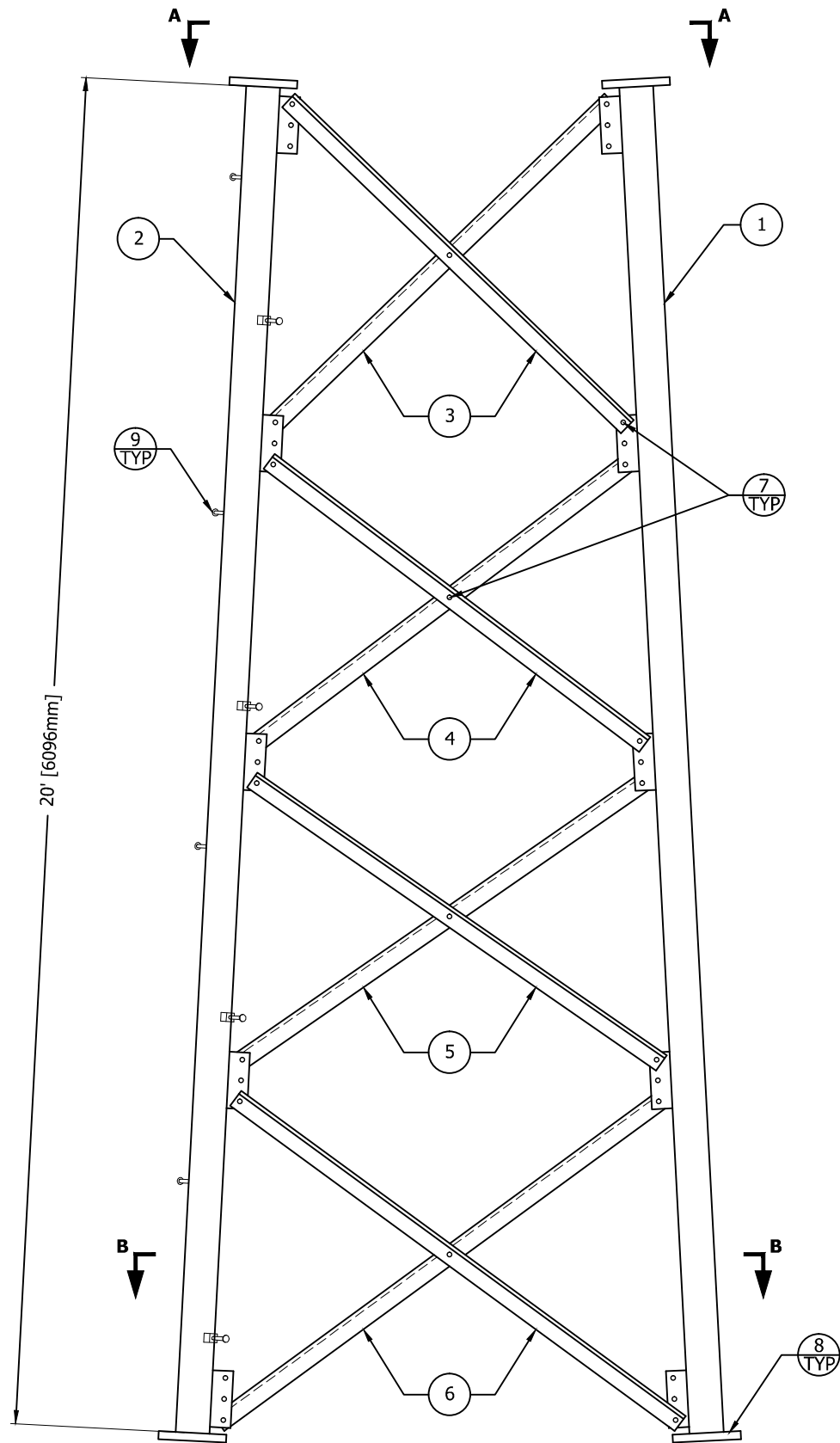
PRODUCTS

PO BOX 5999  
PEORIA, IL 61601-5999  
TOLL FREE 800-727-ROHN

THIS DRAWING IS THE PROPERTY OF ROHN. IT IS NOT TO BE  
REPRODUCED, COPIED OR TRACED IN WHOLE OR IN PART WITHOUT  
OUR WRITTEN CONSENT.

SECTION ASSEMBLY  
DETAILS FOR SSV 9NH

DWN:	CHK'D:	DATE:
AED	WDU	Nov/11/1978
ENG'R:	SHEET #:	
TWS	1 OF 1	
PRJ. ENG'R:	PRJ. MANG'R:	
DRAWING NO:		REV:
A780318		4

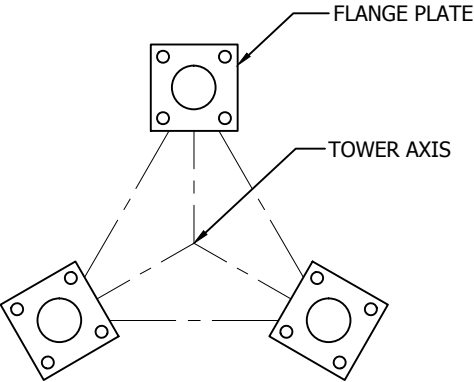


ELEVATION VIEW

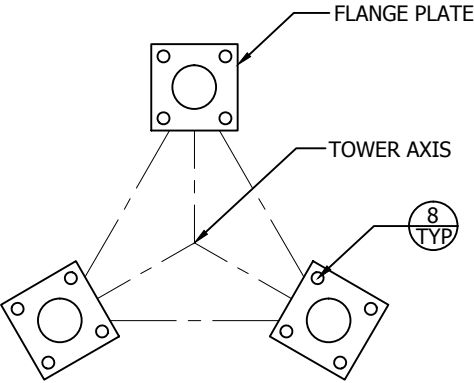
FLANGE	OFFSET	BEVEL	FLANGE PLATE (P/N)	SPREAD
TOP	N/A	N/A	5" X 5" X 3/4" (P/N: 5C)	6'-6 3/4" [2000mm]
BOTTOM	N/A	N/A	5" X 5" X 3/4" (P/N: 5C)	8'-6 3/4" [2610mm]

SECTION ASSEMBLY P/N: 8N				
BILL OF MATERIAL				
ITEM	PART NO.	QTY	DESCRIPTION	
1	VL349	2	LEG SSV 8N 2.5STD 20' 5 5	[PIPE 64mm STD]
2	VL349S	1	LEG SSV 8N 2.5STD 20' 5 5	[PIPE 64mm STD]
3	N81	6	BRACE DS SS8T L1.5X.13X7.95'	[L 38x38x3]
4	N82	6	BRACE DS SS8T L1.5X.13X8.36'	[L 38x38x3]
5	N83	6	BRACE DS SS8T L1.5X.13X8.79'	[L 38x38x3]
6	N84	6	BRACE DS SS8T L1.5X.13X9.11'	[L 38x38x3]
7	210017GA	60	BOLT ASSY 1/2 X 1-1/4 HSB A325	[M13x32]
8	210033GA	12	BOLT ASSY 5/8 X 2-1/2 HSB A325	[M16x64]
9	5/8STEP	16	BOLT ASSY STEP 5/8X7 W/DBN	[M16x178]

- GENERAL NOTES:**
- LEG PART NUMBER IS STAMPED AT THE BOTTOM OF EACH LEG AND MUST BE LOCATED AT THE BOTTOM OF THE SECTION FOR PROPER ASSEMBLY.
  - STEP BOLTS ARE PROVIDED ON 1 LEG ONLY.
  - FLANGE BOLTS ARE FOR FLANGE PLATES AT THE BOTTOM OF THE SECTION.
  - DRAWING IS N.T.S. AND IS FOR ASSEMBLY PURPOSES ONLY.
  - NOMINAL METRIC EQUIVALENTS ARE GIVEN FOR REFERENCE ONLY AND SHALL NOT BE SUBSTITUTED FOR THE DESCRIBED SIZES UNLESS OTHERWISE APPROVED BY ROHN PRODUCTS.



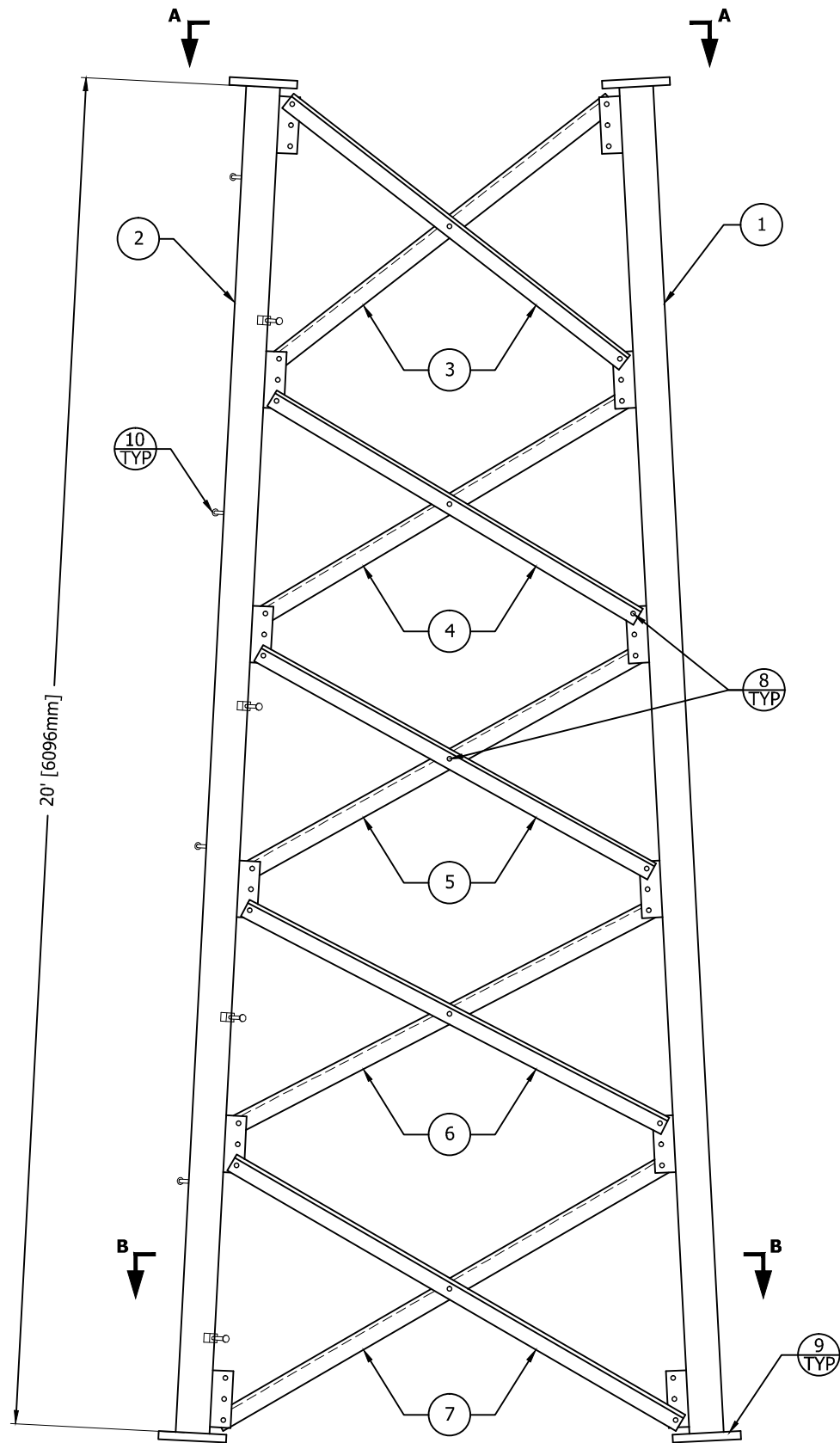
VIEW A-A



VIEW B-B

FILE NO.				
REVISIONS				
REV.	DESCRIPTION	DWN	CHK	APP
3	REDRAWN	JHY	JDM	HA
DATE: Aug/9/2012				


</

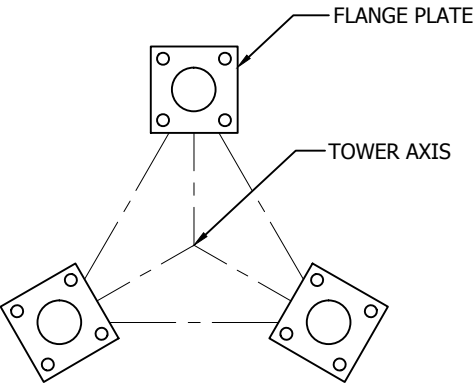


ELEVATION VIEW

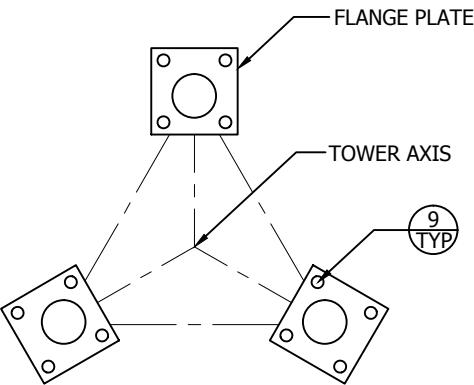
FLANGE	OFFSET	BEVEL	FLANGE PLATE (P/N)	SPREAD
TOP	N/A	N/A	5" X 5" X 3/4" (P/N: 5A)	4'-6 1/4" [1378mm]
BOTTOM	1/4" [6mm]	N/A	5" X 5" X 3/4" (P/N: 5B)	6'-6 3/4" [2000mm]

SECTION ASSEMBLY P/N: 7N				
BILL OF MATERIAL				
ITEM	PART NO.	QTY	DESCRIPTION	
1	VL348	2	LEG SSV 6-7N 2STD 20' 5 SOFF	[PIPE 51mm STD]
2	VL348S	1	LEG SSV 6-7N 2STD 20' 5 SOFF	[PIPE 51mm STD]
3	N71	6	BRACE DS SS7T L1.5X.13X5.71'	[L 38x38x3]
4	N72	6	BRACE DS SS7T L1.5X.13X6.03'	[L 38x38x3]
5	N73	6	BRACE DS SS7T L1.5X.13X6.35'	[L 38x38x3]
6	N74	6	BRACE DS SS7T L1.5X.13X6.69'	[L 38x38x3]
7	N75	6	BRACE DS SS7T L1.5X.13X6.92'	[L 38x38x3]
8	210017GA	75	BOLT ASSY 1/2 X 1-1/4 HSB A325	[M13x32]
9	210033GA	12	BOLT ASSY 5/8 X 2-1/2 HSB A325	[M16x64]
10	5/8STEP	16	BOLT ASSY STEP 5/8X7 W/DBN	[M16x178]

- GENERAL NOTES:**
- LEG PART NUMBER IS STAMPED AT THE BOTTOM OF EACH LEG AND MUST BE LOCATED AT THE BOTTOM OF THE SECTION FOR PROPER ASSEMBLY.
  - STEP BOLTS ARE PROVIDED ON 1 LEG ONLY.
  - FLANGE BOLTS ARE FOR FLANGE PLATES AT THE BOTTOM OF THE SECTION.
  - DRAWING IS N.T.S. AND IS FOR ASSEMBLY PURPOSES ONLY.
  - NOMINAL METRIC EQUIVALENTS ARE GIVEN FOR REFERENCE ONLY AND SHALL NOT BE SUBSTITUTED FOR THE DESCRIBED SIZES UNLESS OTHERWISE APPROVED BY ROHN PRODUCTS.



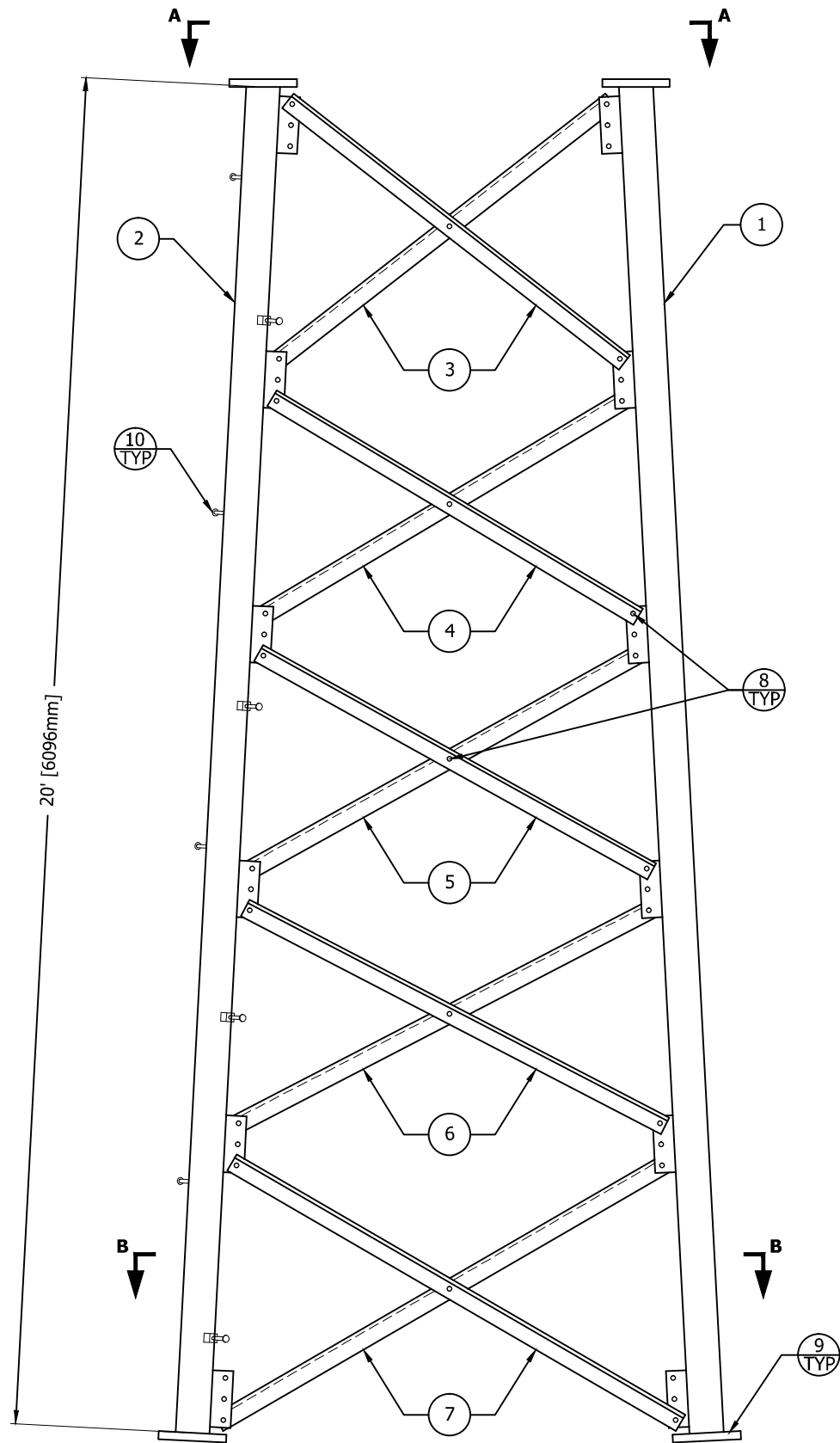
VIEW A-A



VIEW B-B

FILE NO.				
REVISIONS				
REV.	DESCRIPTION	DWN	CHK	APP
3	REDRAWN	JHY	JDM	HA
DATE: Aug/9/2012				


</

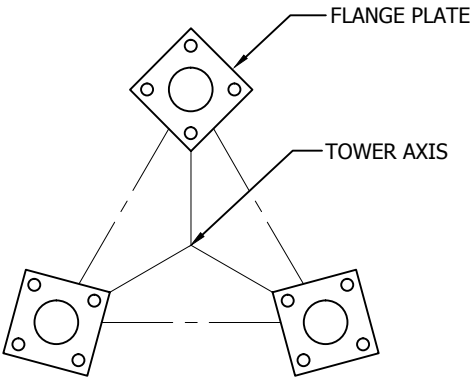


ELEVATION VIEW

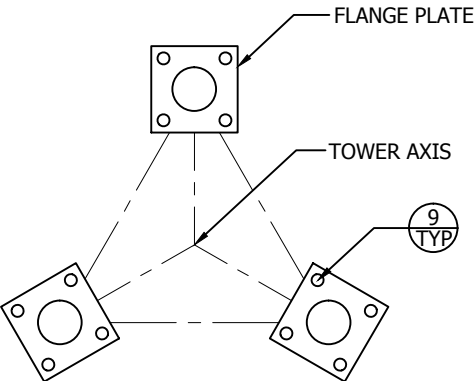
FLANGE	OFFSET	BEVEL	FLANGE PLATE (P/N)	SPREAD
TOP	N/A	3 1/3° REV	4 1/2" X 4 1/2" X 5/8" (P/N: VL906)	2'-6" [762mm]
BOTTOM	N/A	N/A	5" X 5" X 3/4" (P/N: 5A)	4'-6 1/4" [1378mm]

SECTION ASSEMBLY P/N: 6N				
BILL OF MATERIAL				
ITEM	PART NO.	QTY	DESCRIPTION	
1	VL347	2	LEG SSV 6N 2STD 20' 45BEV 5	[PIPE 51mm STD]
2	VL347S	1	LEG SSV 6N 2STD 20' 45BEV 5	[PIPE 51mm STD]
3	N61	6	BRACE DS SS6T L1.5X.13X4.39'	[L 38x38x3]
4	N62	6	BRACE DS SS6T L1.5X.13X4.61'	[L 38x38x3]
5	N63	6	BRACE DS SS6T L1.5X.13X4.86'	[L 38x38x3]
6	N64	6	BRACE DS SS6T L1.5X.13X5.14'	[L 38x38x3]
7	N65	6	BRACE DS SS6T L1.5X.13X5.28'	[L 38x38x3]
8	210017GA	75	BOLT ASSY 1/2 X 1-1/4 HSB A325	[M13x32]
9	210033GA	12	BOLT ASSY 5/8 X 2-1/2 HSB A325	[M16x64]
10	5/8STEP	16	BOLT ASSY STEP 5/8X7 W/DBN	[M16x178]

- GENERAL NOTES:**
- LEG PART NUMBER IS STAMPED AT THE BOTTOM OF EACH LEG AND MUST BE LOCATED AT THE BOTTOM OF THE SECTION FOR PROPER ASSEMBLY.
  - STEP BOLTS ARE PROVIDED ON 1 LEG ONLY.
  - FLANGE BOLTS ARE FOR FLANGE PLATES AT THE BOTTOM OF THE SECTION.
  - DRAWING IS N.T.S. AND IS FOR ASSEMBLY PURPOSES ONLY.
  - NOMINAL METRIC EQUIVALENTS ARE GIVEN FOR REFERENCE ONLY AND SHALL NOT BE SUBSTITUTED FOR THE DESCRIBED SIZES UNLESS OTHERWISE APPROVED BY ROHN PRODUCTS.



VIEW A-A



VIEW B-B

FILE NO.

REVISIONS

REV.	DESCRIPTION	DWN	CHK	APP
6	REDRAWN	JHY	JDM	HA
DATE: Aug/9/2012				

PO BOX 5999  
PEORIA, IL 61601-5999  
TOLL FREE 800-727-ROHN

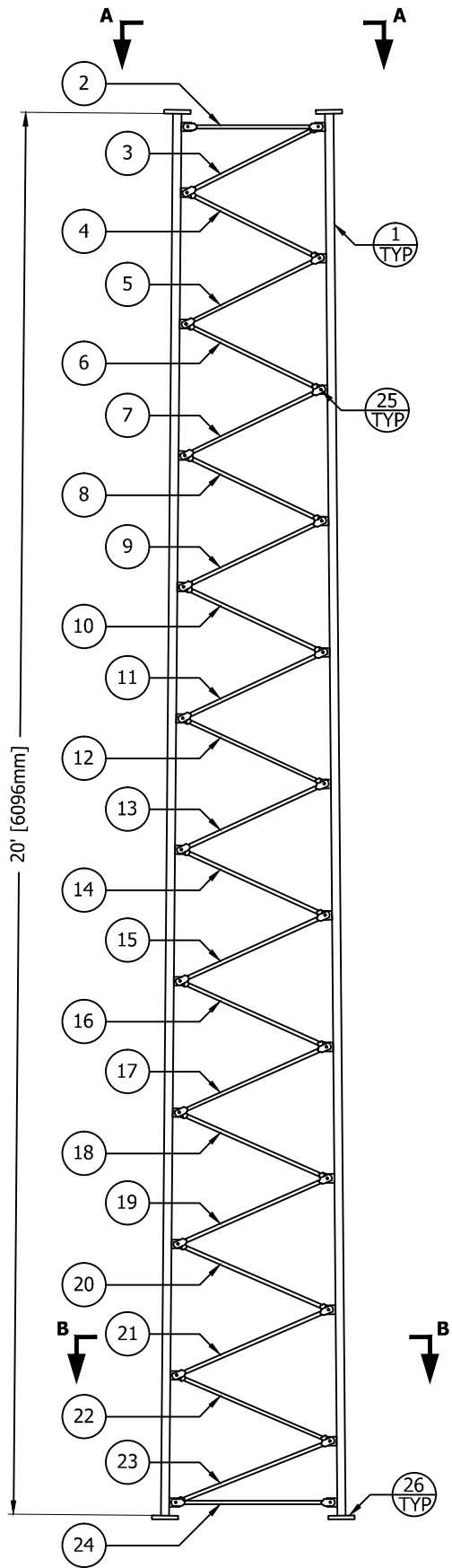
THIS DRAWING IS THE PROPERTY OF ROHN. IT IS NOT TO BE REPRODUCED, COPIED OR TRACED IN WHOLE OR IN PART WITHOUT OUR WRITTEN CONSENT.

SECTION ASSEMBLY  
DETAILS FOR SSV 6N

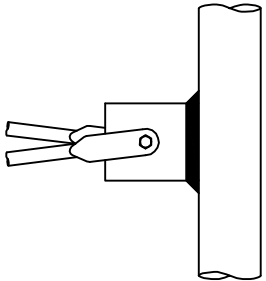
DWN:	CHK'D:	DATE:
AED	WDU	Oct/18/1978
ENG'R:	SHEET #:	
TWS	1 OF 1	
PRJ. ENG'R:	PRJ. MANG'R:	

DRAWING NO:	REV:
A780200	6





ELEVATION VIEW



BRACING DETAIL

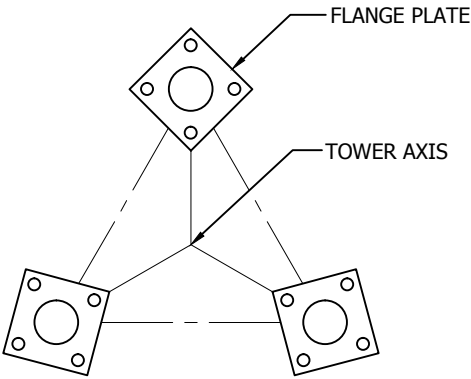
GENERAL NOTES:

- 1. LEG PART NUMBER IS STAMPED AT THE BOTTOM OF EACH LEG AND MUST BE LOCATED AT THE BOTTOM OF THE SECTION FOR PROPER ASSEMBLY.
- 2. FLANGE BOLTS ARE FOR FLANGE PLATES AT THE BOTTOM OF THE SECTION.
- 3. DRAWING IS N.T.S. AND IS FOR ASSEMBLY PURPOSES ONLY.
- 4. NOMINAL METRIC EQUIVALENTS ARE GIVEN FOR REFERENCE ONLY AND SHALL NOT BE SUBSTITUTED FOR THE DESCRIBED SIZES UNLESS OTHERWISE APPROVED BY ROHN PRODUCTS.

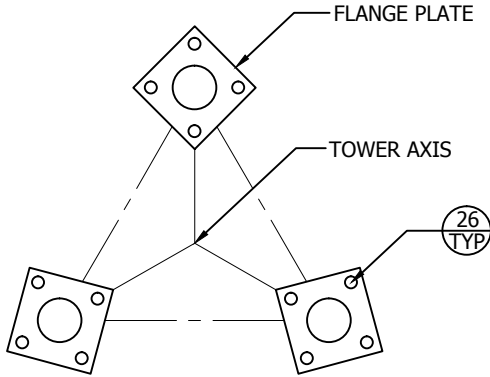
SECTION ASSEMBLY P/N: 5N

BILL OF MATERIAL

ITEM	PART NO.	QTY	DESCRIPTION	
1	VL341	3	LEG SSV 5N/5NST 1.44SR 20' 45	[BAR RND 37mm SR]
2	N45	3	BRACE DIAG SSV RD BAR .63X1.98	[BAR RND 16mm]
3	N51	3	BRACE DIAG SSV RD BAR .63X2.18	[BAR RND 16mm]
4	N52	3	BRACE DIAG SSV RD BAR .63X2.22	[BAR RND 16mm]
5	N53	3	BRACE DIAG SSV RD BAR .63X2.23	[BAR RND 16mm]
6	N54	3	BRACE DIAG SSV RD BAR .63X2.25	[BAR RND 16mm]
7	N55	3	BRACE DIAG SSV RD BAR .63X2.26	[BAR RND 16mm]
8	N56	3	BRACE DIAG SSV RD BAR .63X2.28	[BAR RND 16mm]
9	N57	3	BRACE DIAG SSV RD BAR .63X2.29	[BAR RND 16mm]
10	N58	3	BRACE DIAG SSV RD BAR .63X2.30	[BAR RND 16mm]
11	N59	3	BRACE DIAG SSV RD BAR .63X2.31	[BAR RND 16mm]
12	N510	3	BRACE DIAG SSV RD BAR .63X2.33	[BAR RND 16mm]
13	N511	3	BRACE DIAG SSV RD BAR .63X2.34	[BAR RND 16mm]
14	N512	3	BRACE DIAG SSV RD BAR .63X2.36	[BAR RND 16mm]
15	N513	3	BRACE DIAG SSV RD BAR .63X2.38	[BAR RND 16mm]
16	N514	3	BRACE DIAG SSV RD BAR .63X2.39	[BAR RND 16mm]
17	N515	3	BRACE DIAG SSV RD BAR .63X2.40	[BAR RND 16mm]
18	N516	3	BRACE DIAG SSV RD BAR .63X2.42	[BAR RND 16mm]
19	N517	3	BRACE DIAG SSV RD BAR .63X2.43	[BAR RND 16mm]
20	N518	3	BRACE DIAG SSV RD BAR .63X2.45	[BAR RND 16mm]
21	N519	3	BRACE DIAG SSV RD BAR .63X2.46	[BAR RND 16mm]
22	N520	3	BRACE DIAG SSV RD BAR .63X2.47	[BAR RND 16mm]
23	N521	3	BRACE DIAG SSV RD BAR .63X2.49	[BAR RND 16mm]
24	N58	3	BRACE DIAG SSV RD BAR .63X2.30	[BAR RND 16mm]
25	210008GA	72	BOLT ASSY 3/8 X 1-1/2 HCS G5	[M10x38]
26	210032GA	12	BOLT ASSY 5/8 X 2-1/4 HSB A325	[M16x57]



VIEW A-A



VIEW B-B

FLANGE	OFFSET	BEVEL	FLANGE PLATE (P/N)	SPREAD
TOP	N/A	N/A	4 1/2" X 4 1/2" X 5/8" (P/N: VL901)	2'-2" [660mm]
BOTTOM	N/A	N/A	4 1/2" X 4 1/2" X 5/8" (P/N: VL901)	2'-6" [762mm]

FILE NO.

REVISIONS				
REV.	DESCRIPTION	DWN	CHK	APP
5	REDRAWN	JHY	JDM	HA
DATE: Aug/9/2012				

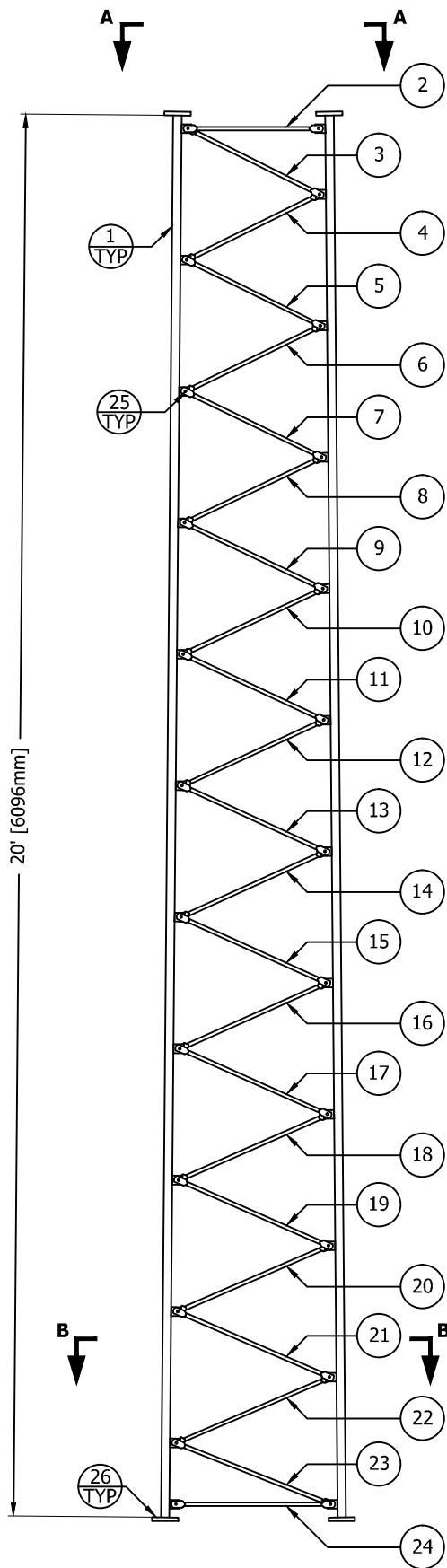
ROHN  
PRODUCTS

PO BOX 5999  
PEORIA, IL 61601-5999  
TOLL FREE 800-727-ROHN

THIS DRAWING IS THE PROPERTY OF ROHN. IT IS NOT TO BE REPRODUCED, COPIED OR TRACED IN WHOLE OR IN PART WITHOUT OUR WRITTEN CONSENT.

SECTION ASSEMBLY  
DETAILS FOR SSV 5N

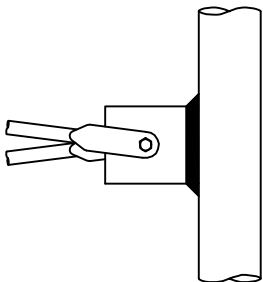
DWN:	CHK'D:	DATE:
AED	JD	Mar/22/1979
ENG'R:	SHEET #:	
TWS	1 OF 1	
PRJ. ENG'R:	PRJ. MANG'R:	
DRAWING NO:		REV:
A790119		5



ELEVATION VIEW

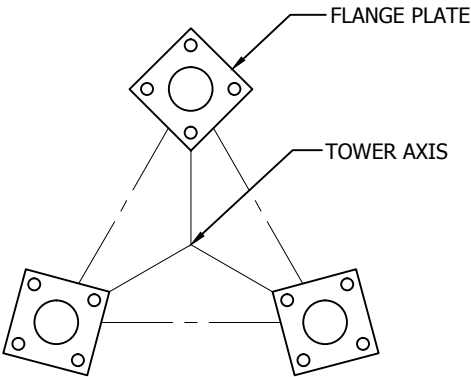
GENERAL NOTES:

1. LEG PART NUMBER IS STAMPED AT THE BOTTOM OF EACH LEG AND MUST BE LOCATED AT THE BOTTOM OF THE SECTION FOR PROPER ASSEMBLY.
2. FLANGE BOLTS ARE FOR FLANGE PLATES AT THE BOTTOM OF THE SECTION.
3. DRAWING IS N.T.S. AND IS FOR ASSEMBLY PURPOSES ONLY.
4. NOMINAL METRIC EQUIVALENTS ARE GIVEN FOR REFERENCE ONLY AND SHALL NOT BE SUBSTITUTED FOR THE DESCRIBED SIZES UNLESS OTHERWISE APPROVED BY ROHN PRODUCTS.

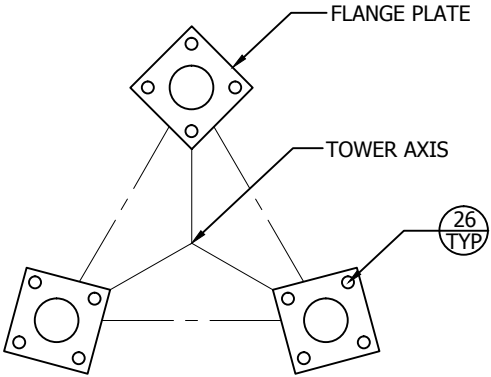


BRACING DETAIL

SECTION ASSEMBLY P/N: 4N				
BILL OF MATERIAL				
ITEM	PART NO.	QTY	DESCRIPTION	
1	VL345	3	LEG SSV 4N 1.25SR 20' 4 45	[BAR RND 32mm SR]
2	N4T	3	BRACE H SSV RD BAR .63X1.66'	[BAR RND 16mm]
3	N41	3	BRACE DIAG SSV RD BAR .63X1.90	[BAR RND 16mm]
4	N42	3	BRACE DIAG SSV RD BAR .63X1.94	[BAR RND 16mm]
5	N43	3	BRACE DIAG SSV RD BAR .63X1.95	[BAR RND 16mm]
6	N44	3	BRACE DIAG SSV RD BAR .63X1.97	[BAR RND 16mm]
7	N45	3	BRACE DIAG SSV RD BAR .63X1.98	[BAR RND 16mm]
8	N46	3	BRACE DIAG SSV RD BAR .63X1.99	[BAR RND 16mm]
9	N47	3	BRACE DIAG SSV RD BAR .63X2.01	[BAR RND 16mm]
10	N48	3	BRACE DIAG SSV RD BAR .63X2.02	[BAR RND 16mm]
11	N49	3	BRACE DIAG SSV RD BAR .63X2.04	[BAR RND 16mm]
12	N410	3	BRACE DIAG SSV RD BAR .63X2.05	[BAR RND 16mm]
13	N411	3	BRACE DIAG SSV RD BAR .63X2.06	[BAR RND 16mm]
14	N412	3	BRACE DIAG SSV RD BAR .63X2.08	[BAR RND 16mm]
15	N413	3	BRACE DIAG SSV RD BAR .63X2.09	[BAR RND 16mm]
16	N414	3	BRACE DIAG SSV RD BAR .63X2.10	[BAR RND 16mm]
17	N415	3	BRACE DIAG SSV RD BAR .63X2.12	[BAR RND 16mm]
18	N416	3	BRACE DIAG SSV RD BAR .63X2.13	[BAR RND 16mm]
19	N417	3	BRACE DIAG SSV RD BAR .63X2.15	[BAR RND 16mm]
20	N418	3	BRACE DIAG SSV RD BAR .63X2.16	[BAR RND 16mm]
21	N419	3	BRACE DIAG SSV RD BAR .63X2.17	[BAR RND 16mm]
22	N420	3	BRACE DIAG SSV RD BAR .63X2.19	[BAR RND 16mm]
23	N421	3	BRACE DIAG SSV RD BAR .63X2.20	[BAR RND 16mm]
24	N4B	3	BRACE H SSV RD BAR .63X1.99'	[BAR RND 16mm]
25	210008GA	72	BOLT ASSY 3/8 X 1-1/2 HCS G5	[M10x38]
26	210032GA	12	BOLT ASSY 5/8 X 2-1/4 HSB A325	[M16x57]



VIEW A-A



VIEW B-B

FLANGE	OFFSET	BEVEL	FLANGE PLATE (P/N)	SPREAD
TOP	N/A	N/A	4" X 4" X 1/2" (P/N: 4A)	1'-10" [559mm]
BOTTOM	N/A	N/A	4 1/2" X 4 1/2" X 5/8" (P/N: 45A)	2'-2" [660mm]

FILE NO.

REVISIONS

REV.	DESCRIPTION	DWN	CHK	APP
4	REDRAWN	JHY	JDM	HA
DATE: Aug/9/2012				

PO BOX 5999  
PEORIA, IL 61601-5999  
TOLL FREE 800-727-ROHN

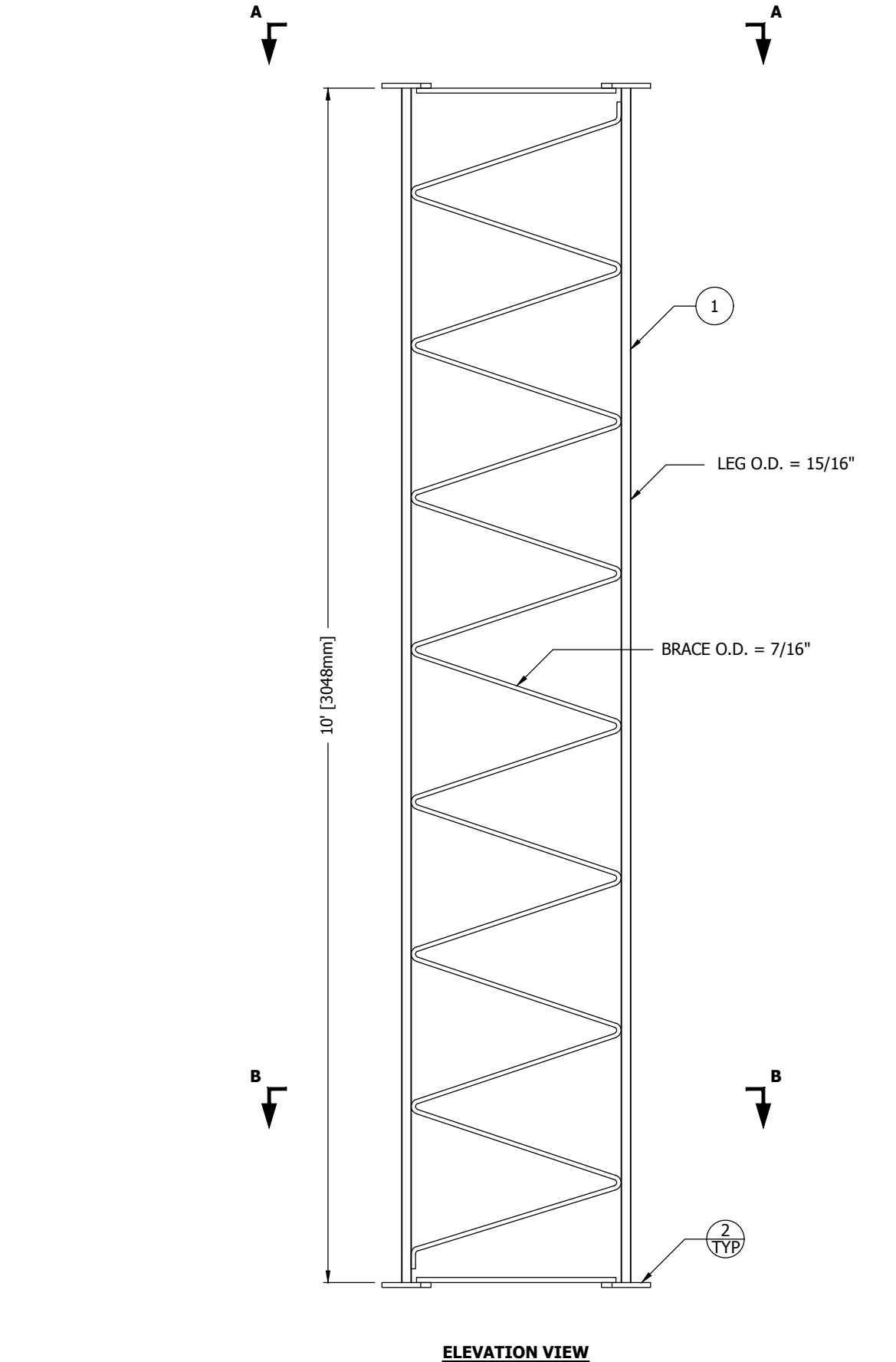
THIS DRAWING IS THE PROPERTY OF ROHN. IT IS NOT TO BE REPRODUCED, COPIED OR TRACED IN WHOLE OR IN PART WITHOUT OUR WRITTEN CONSENT.

SECTION ASSEMBLY  
DETAILS FOR SSV 4N

DWN:	CHK'D:	DATE:
AED	RAM	Mar/17/1979
ENG'R:	SHEET #:	
TWS	1 OF 1	
PRJ. ENG'R:	PRJ. MANG'R:	

DRAWING NO:	REV:
A790110	4



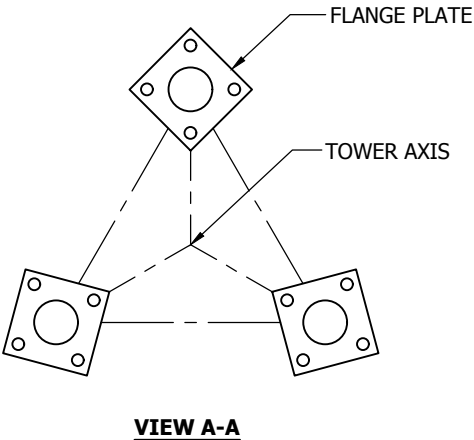


ELEVATION VIEW

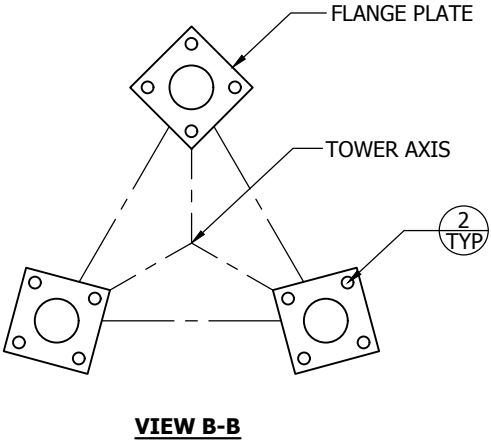
FLANGE	OFFSET	BEVEL	FLANGE PLATE (P/N)	SPREAD
TOP	N/A	N/A	4" X 4" X 1/2" (P/N: 4C)	1'10" [559mm]
BOTTOM	N/A	N/A	4" X 4" X 1/2" (P/N: 4C)	1'10" [559mm]

SECTION ASSEMBLY P/N: 3WNB				
BILL OF MATERIAL				
ITEM	PART NO.	QTY	DESCRIPTION	
1	VS8	1	SECTION 10' 3WNB STR WELDED	
2	210020GA	12	BOLT ASSY 1/2 X 2 HSB A325	[M13x51]

- GENERAL NOTES:**
- LEG PART NUMBER IS STAMPED AT THE BOTTOM OF EACH LEG AND MUST BE LOCATED AT THE BOTTOM OF THE SECTION FOR PROPER ASSEMBLY.
  - FLANGE BOLTS ARE FOR FLANGE PLATES AT THE BOTTOM OF THE SECTION.
  - DRAWING IS N.T.S. AND IS FOR ASSEMBLY PURPOSES ONLY.
  - NOMINAL METRIC EQUIVALENTS ARE GIVEN FOR REFERENCE ONLY AND SHALL NOT BE SUBSTITUTED FOR THE DESCRIBED SIZES UNLESS OTHERWISE APPROVED BY ROHN PRODUCTS.



VIEW A-A



VIEW B-B

FILE NO.				
REVISIONS				
REV.	DESCRIPTION	DWN	CHK	APP
3	REDRAWN DATE: 11/13/2012	JHY	CEJ	HA

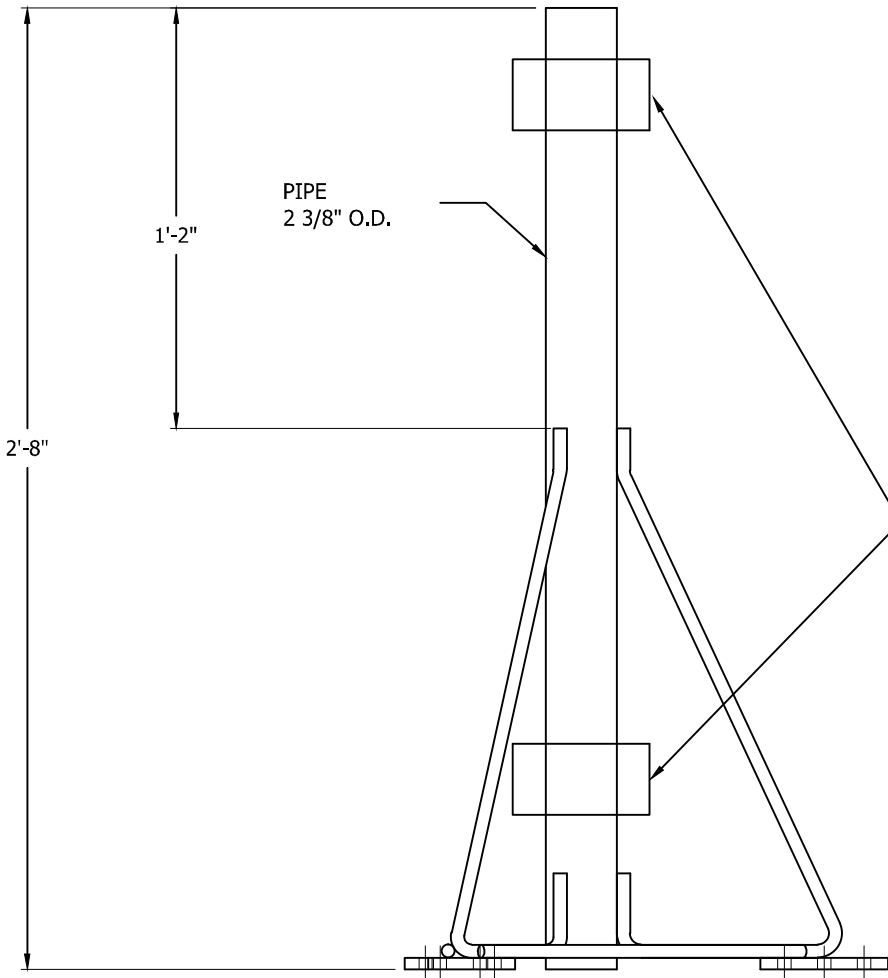
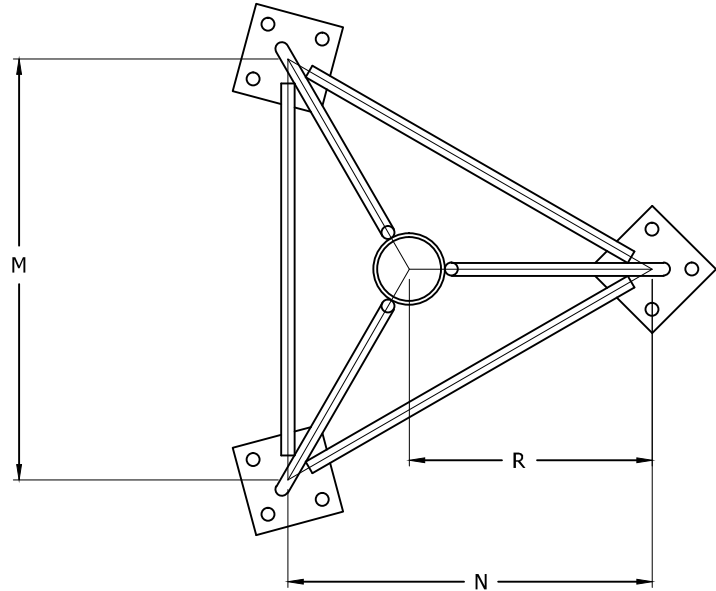


PO BOX 5999  
PEORIA, IL 61601-5999  
TOLL FREE 800-727-ROHN

THIS DRAWING IS THE PROPERTY OF ROHN. IT IS NOT TO BE REPRODUCED, COPIED OR TRACED IN WHOLE OR IN PART WITHOUT OUR WRITTEN CONSENT.

SECTION ASSEMBLY  
DETAILS FOR SSV 3WNB

DWN:	CHK'D:	DATE:
AED	MWD	Mar/14/1979
ENG'R:	SHEET #:	
TS	1 OF 1	
PRJ. ENG'R:	PRJ. MANG'R:	
DRAWING NO:		REV:
A790099		3



NOTE: DESIGN BASED ON THRUST OF 500# AT CLAMPING POSTIONS

RECOMMENDED CLAMPING POSITIONS FOR ANTENNA MOUNTS

TAPERED TOP ASSY BILL OF MATERIALS DETAIL

	TOWER SEC.				FLANGE PLATE	FLANGE BOLTS		
ASSY P/N	NUMBER	M	N	R	SIZE	QTY	SIZE	P/N
1TT	1W, 1WB, 2W	1'-2"	1'-0 1/8"	0'-8 1/16"	3 X 3 X 3/8	9	3/8 X 1-1/2	210008GA
3TT	2WST, 2WB, 3WN	1'-6"	1'-3 9/16"	0'-10 3/8"	3 X 3 X 3/8	9	3/8 X 1-1/2	210008GA
4TTN	3WNST, 3WNB, 4N	1'-10"	1'-7 1/16"	1'-0 11/16"	4 X 4 X 1/2	9	1/2 X 2	210020GA
5TTN	4NST, 4NA, 4WB, 4NC, 5N	2'-2"	1'-10 1/2"	1'-3"	4-1/2 X 4-1/2 X 5/8	9	5/8 X 2-1/4	210032GA
6TT	5NST, 5NA, 5NB, 5NC, 6N	2'-6"	2'-2"	1'-5 5/16"	4-1/2 X 4-1/2 X 5/8	9	5/8 X 2-1/4	210032GA

FILE NO.

REVISIONS				
REV.	DESCRIPTION	DWN	CHK	APP
12	UPDATED TO NEW STANDARDS	JEC	KTL	DWG
DATE: 07/29/11				



PO BOX 5999  
PEORIA, IL 61601-5999  
TOLL FREE 800-727-ROHN

THIS DRAWING IS THE PROPERTY OF ROHN. IT IS NOT TO BE REPRODUCED, COPIED OR TRACED IN WHOLE OR IN PART WITHOUT OUR WRITTEN CONSENT.

TAPERED TOP ASSEMBLY

DWN:	MDI	CHK'D:	OH	DATE:	JAN/03/1967
ENG'R:	CW	SHEET #: 1 OF 1			
DRAWING NO: SK670407				REV: 12	

FILE NO.

## REVISIONS

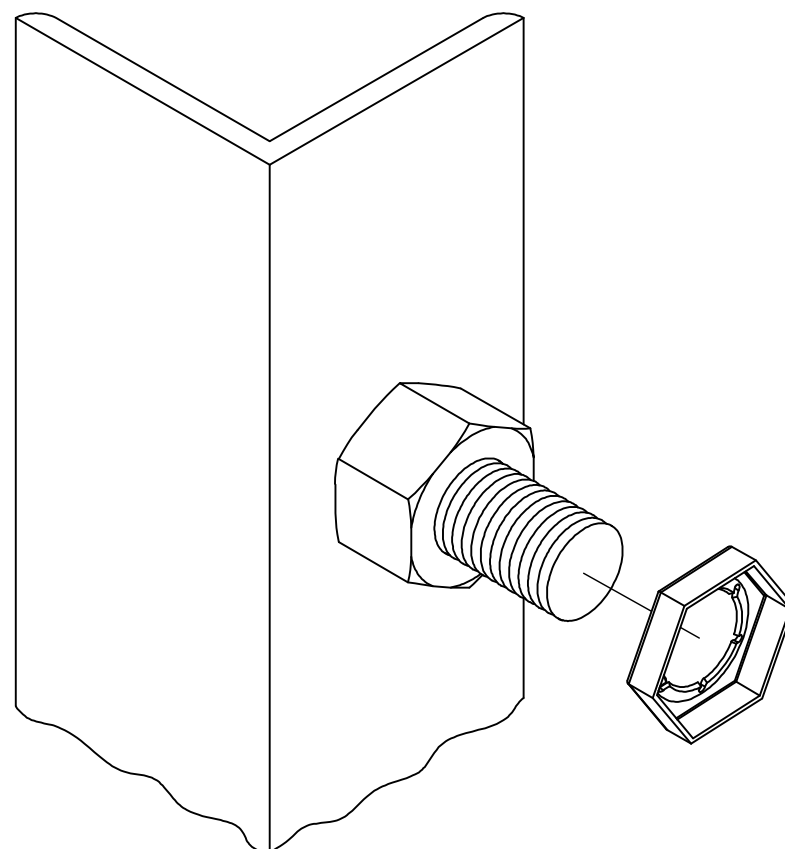
REV.	DESCRIPTION	DWN	CHK	APP
7	CHANGE NOTATION.  DATE: 01/11/12	JEC	JDM	HA

## ASSEMBLY BOLT INSTALLATION

1. UNLESS OTHERWISE SPECIFIED, ASSEMBLY BOLTS AND ANCHOR BOLTS ARE TO BE TIGHTENED TO A SNUG TIGHT CONDITION (MEMBERS IN FIRM CONTACT) AND MUST INCLUDE A NUT LOCKING DEVICE. NO MINIMUM BOLT TENSION OR TORQUE VALUES ARE REQUIRED. WHEN LOCK WASHERS ARE PROVIDED AS A NUT LOCKING DEVICE, REPLACE ANY DAMAGED WASHERS DUE TO OVER TIGHTENING.
2. WASHERS ARE TO BE INSTALLED OVER SLOTTED HOLES.

## PAL NUT INSTALLATION

1. PAL NUTS ARE TO BE INSTALLED AFTER NUTS ARE TIGHT AND WITH EDGE LIP OUT (SEE PICTURE). PAL NUTS ARE NOT REQUIRED WHEN SELF-LOCKING NUTS OR LOCK WASHERS ARE PROVIDED.

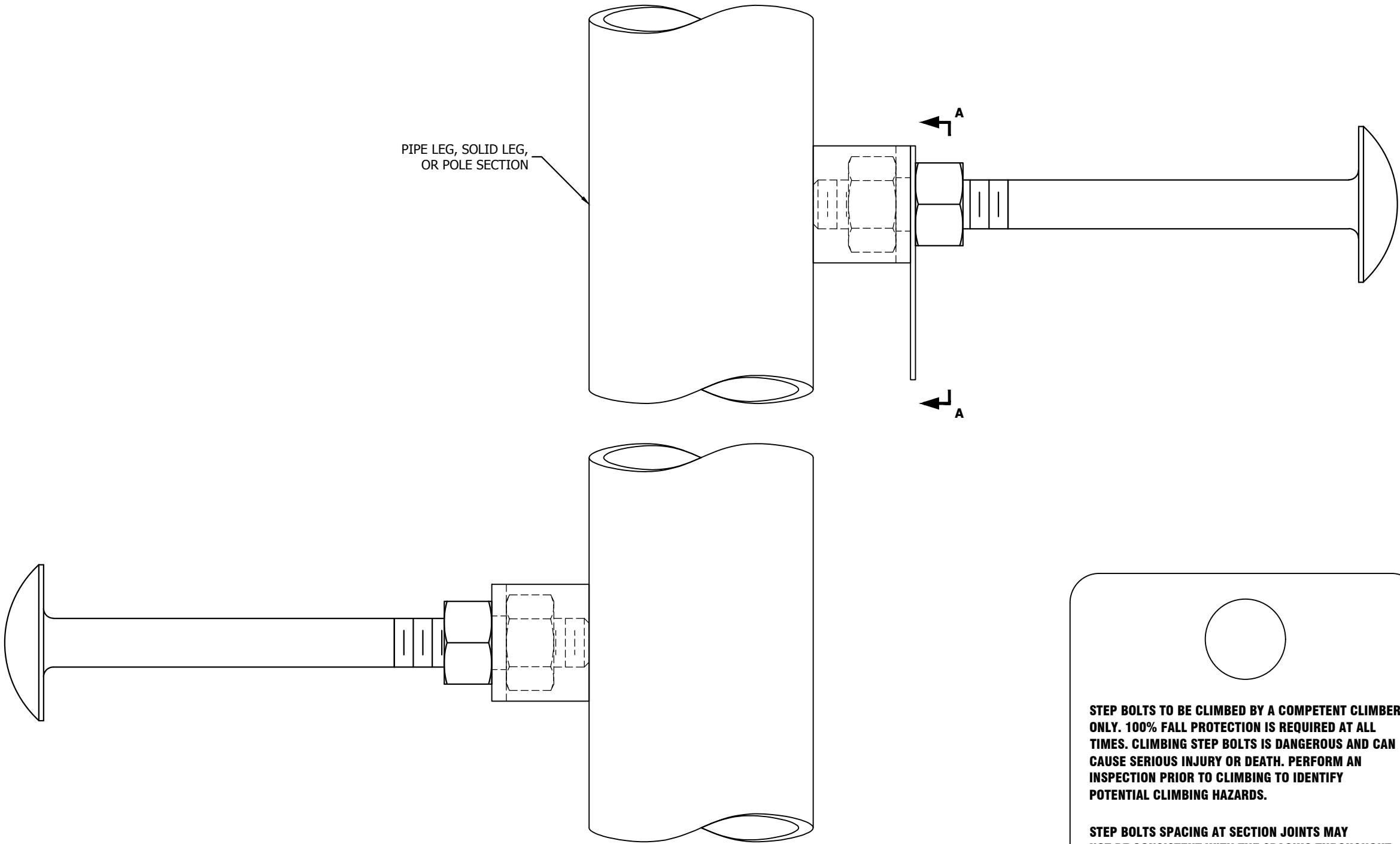


PO BOX 5999  
PEORIA, IL 61601-5999  
TOLL FREE 800-727-ROHN

THIS DRAWING IS THE PROPERTY OF ROHN. IT IS NOT TO BE REPRODUCED, COPIED OR TRACED IN WHOLE OR IN PART WITHOUT OUR WRITTEN CONSENT.

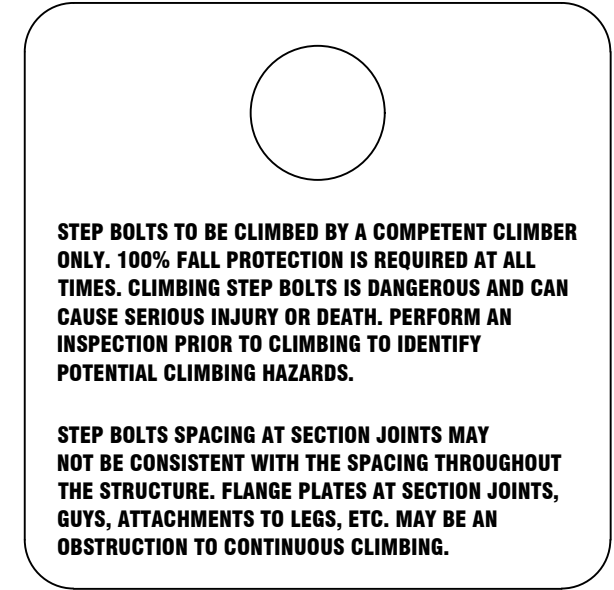
## BOLT ASSEMBLY INSTALLATION

DWN:	CHK'D:	DATE:
OH	GHB	07/05/79
ENG'R:	SHEET #:	
TWS	1 OF 1	
DRAWING NO:	REV:	
A790135	7	



**NOTE:**

1. STEP BOLTS MUST BE TURNED UNTIL THE FRONT EDGE OF THE BOLT TOUCHES THE SIDE OF THE STRUCTURE.
2. STEP BOLTS ARE SUPPLIED FOR CONSTRUCTION PURPOSES AND ARE NOT INTENDED FOR USE BY UNQUALIFIED PERSONNEL.
3. DEVIATION FROM PERFECT ALIGNMENT IS ACCEPTABLE. SOME SPACING INCONSISTENCY MAY EXIST AT SPLICE LOCATIONS.
4. IF STEP BOLTS ARE BELIEVED TO PRESENT SAFETY PROBLEMS TO PERSONNEL, DO NOT INSTALL THE STEP BOLTS.



**VIEW A-A**  
**STEP BOLT CLIMBING WARNING SIGN**  
(INSTALL WARNING SIGN IN BOTTOM 5' OF STRUCTURE)

FILE NO.				
REVISIONS				
REV.	DESCRIPTION	DWN	CHK	APP
6	UPDATED TITLE BLOCK	JHY	JDM	HA
	DATE: 11/23/2015			



PO BOX 5999  
PEORIA, IL 61601-5999  
TOLL FREE 800-727-ROHN

THIS DRAWING IS THE PROPERTY OF ROHN. IT IS NOT TO BE REPRODUCED, COPIED OR TRACED IN WHOLE OR IN PART WITHOUT OUR WRITTEN CONSENT.

STEP BOLT INSTALLATION DETAIL

DWN:	OH	CHK'D:	TWS	DATE:	04/16/1974
ENG'R:	CW	SHEET #:			
PRJ. ENG'R:		PRJ. MANG'R:			
DRAWING NO:					REV:
B651264					6