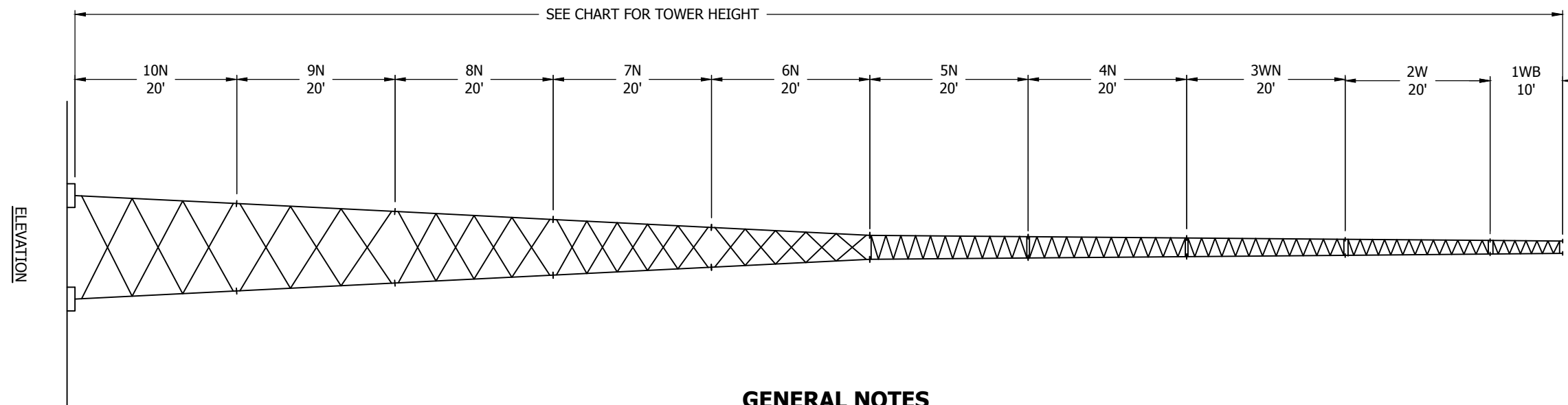


TOWER ASSEMBLY NUMBER	TOWER HEIGHT (FT)	TOP	BASE SECTIONS				EFFECTIVE PROJECTED AREA (SQ. FT.)			
			BASE	A-BOLTS 12 REQ'D	ROHN ANCHOR BOLT KIT P/N	FACE SPREAD	TOP		30' BELOW TOP	
							EXP B	EXP C	EXP B	EXP C
SS040R90	40	2W	3WN	SB3	-	1'-10"	18	13	31	19
SS050R90	50	1WB	3WN	SB3	-	1'-10"	7	5	12	7
SS060R90	60	2W	4N	SB4	-	2'-2"	15	10	25	16
SS070R90	70	1WB	4N	SB4	-	2'-2"	6	4	10	5
SS080R90	80	2W	5N	SB5	-	2'-6"	13	9	22	14
SS090R90	90	1WB	5N	SB5	-	2'-6"	5	3	8	5
SS100R90	100	2W	6N62	5/8X42	6NABDST	4'-6 1/4"	11	7	18	11
SS110R90	110	1WB	6N62	5/8X42	6NABDST	4'-6 1/4"	4	2	7	3
SS120R90	120	2W	7N165	5/8X42	6NABDST	6'-6 3/4"	10	6	17	10
SS130R90	130	1WB	7N165	5/8X42	6NABDST	6'-6 3/4"	4	2	7	3
SS140R90	140	2W	8N106	5/8X42	6NABDST	8'-6 3/4"	9	4	15	7
SS150R90	150	1WB	8N106	5/8X42	6NABDST	8'-6 3/4"	5	2	8	3
SS160R90	160	2W	9N325	5/8X42	6NABDST	10'-6 3/4"	8	-	14	-
SS170R90	170	1WB	9N325	5/8X42	6NABDST	10'-6 3/4"	5	-	8	-
SS180R90	180	2W	10N387	3/4X48	10NABDST	12'-7 1/4"	4	-	6	-
SS190R90	190	1WB	10N387	3/4X48	10NABDST	12'-7 1/4"	3	-	5	-



GENERAL NOTES

- STANDARD TOWER DESIGNS ARE IN ACCORDANCE WITH APPROVED NATIONAL STANDARD ANSI/TIA-222-G, STRUCTURAL CLASS II, TOPOGRAPHIC CATEGORY 1, 3/4" DESIGN ICE THICKNESS, SEISMIC COEFFICIENT $S_s \leq 1.0$.
- TOWER DESIGNS ASSUME ALLOWABLE EFFECTIVE PROJECTED AREAS ARE SYMMETRICALLY PLACED ON THE TOWER.
- DESIGNS ASSUME ONE 7/8" LINE TO TOP AND TWO 7/8" LINES TO 30 FEET BELOW TOP, ONE LINE ON EACH FACE.
- ALL TOWERS ARE PROVIDED WITH STEP BOLTS AND A TAPERED TOP.
- GROUNDING KIT MUST BE ORDERED SEPARATELY.
- ASSEMBLY DRAWINGS AND STANDARD FOUNDATION DETAILS ARE SUPPLIED WITH THE TOWER.
- CUSTOM DESIGNS FOR SITE-SPECIFIC APPLICATIONS ARE AVAILABLE UPON REQUEST.
- INSTALL WARNING PLATE (P/N ACWS) IN A HIGHLY VISIBLE LOCATION.
- ALL ANTENNA INSTALLATIONS MUST BE GROUNDED IN ACCORDANCE WITH LOCAL AND NATIONAL CODES.
- FOR ADDITIONAL BRACING, GROUTING AND DRAINAGE DETAILS SEE DRAWING SK720305
- FOR TAPERED TOP DETAILS SEE DRAWING SK670407
- ALL TOWERS WITH 1WB/2W TOP SECTIONS PROVIDED WITH (P/N 1TT) TAPERED TOP.
- FOR STEP BOLT DETAILS SEE DRAWING B651264.
- FOR FOUNDATION DETAILS SEE DRAWING DWG-0693 & B090548.
- FOR ANCHORS AND SHORT BASE INSTALLATION SEE DRAWING NUMBERS B050439 AND CU730104.

FILE NO.

REVISIONS

REV	DESCRIPTION	DWN	CHK	APP
3	REVISED GENERAL NOTES DATE: 6/16/2015	JEC	MDF	HA



PO BOX 5999
PEORIA, IL 61601-5999
TOLL FREE 800-727-ROHN

THIS DRAWING IS THE PROPERTY OF ROHN. IT IS NOT TO BE REPRODUCED, COPIED OR TRACED IN WHOLE OR IN PART WITHOUT OUR WRITTEN CONSENT.

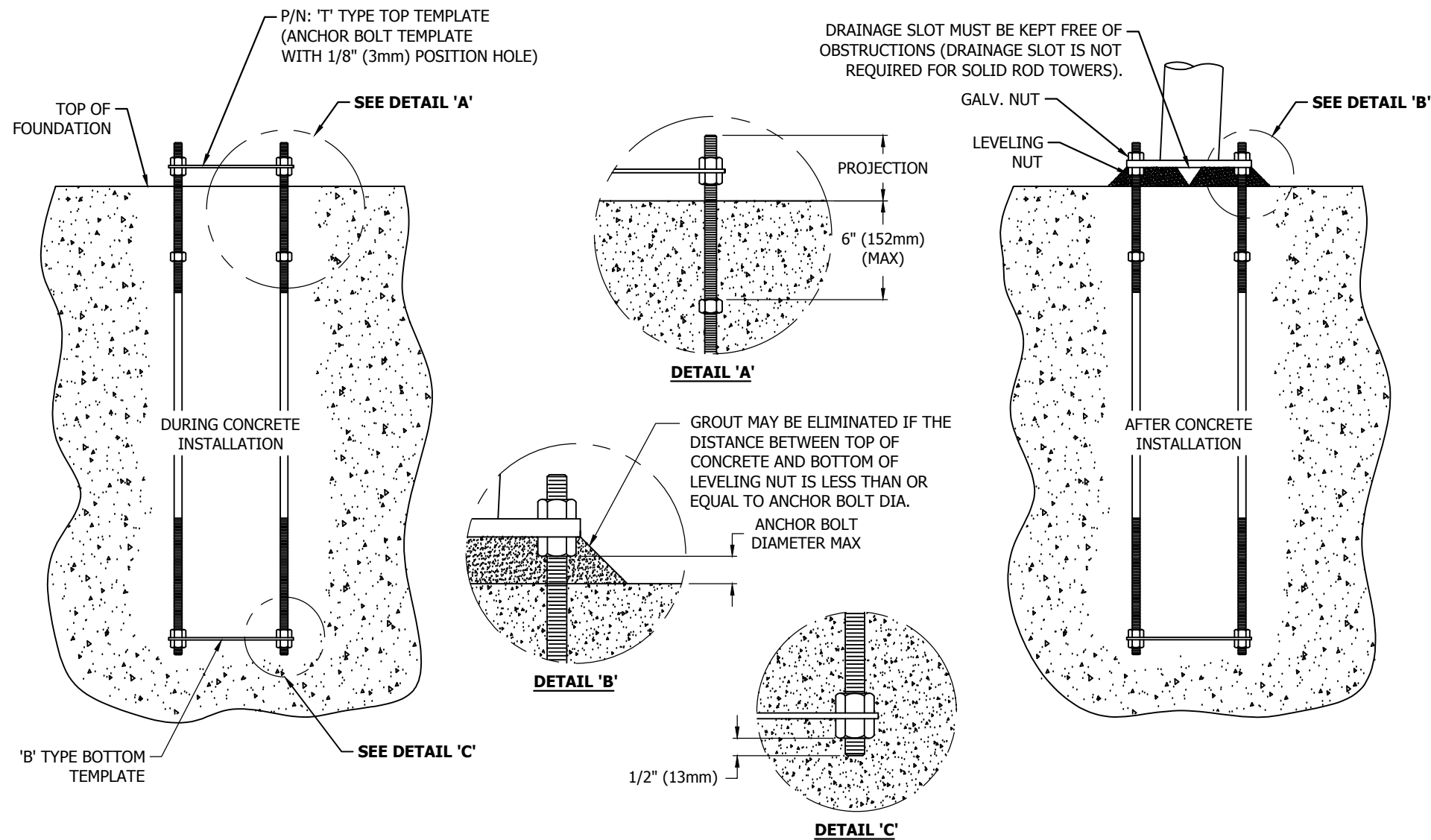
ERECTION PROFILE
SSV RWEV G 90 MPH 3-SEC, 3/4" ICE

DWN: CEJ CHK'D: JDM DATE: 10/16/2013

ENG'R: HA SHEET #: 1 OF 1

PRJ. ENG'R: PRJ. MANG'R:

DRAWING NO: DWG-0880 REV: 3



FILE NO.				
REVISIONS				
REV	DESCRIPTION	DWN	CHK	APP
4	ADDED DIMENSION TO SHOW PROJECTION	CEJ	JDM	HA
DATE: 01/30/14				

ROHN
PRODUCTS

PO BOX 5999
PEORIA, IL 61601-5999
TOLL FREE 800-727-ROHN

THIS DRAWING IS THE PROPERTY OF ROHN. IT IS NOT TO BE REPRODUCED, COPIED OR TRACED IN WHOLE OR IN PART WITHOUT OUR WRITTEN CONSENT.

**ANCHOR BOLT LAYOUTS
FOR 5/8", 3/4", 7/8", & 1" ANCHOR BOLTS**

DWN: MF	CHK'D: KTL	DATE: 09/07/05
ENG'R: HA	SHEET #: 1 OF 1	
PRJ. ENG'R:	PRJ. MANG'R:	
DRAWING NO: B050439	REV: 4	

!! WARNING !!

PRIOR TO PLACING CONCRETE:

- CHECK THAT THE TEMPLATE ANCHOR BOLT CIRCLE MATCHES THE ANCHOR BOLT CIRCLE SHOWN ON THE STRUCTURE DRAWING.
- CALL ROHN (309)-566-3000 FOR ANY DISCREPANCY.

ANCHOR BOLT INSTALLATION TOLERANCES

1. FACE SPREAD DIMENSION CENTER-TO-CENTER OF ANCHOR BOLT CIRCLES - PLUS OR MINUS 1/16" (2mm) OR 1/16"(2mm) PER 20 FT. (6m) OF FACE SPREAD.
2. MAXIMUM DIFFERENCE BETWEEN ANY TWO FOUNDATION ELEVATIONS - 1/2" (13mm).
3. CONCRETE DIMENSIONS - PLUS OR MINUS 1" (25mm).
4. DEPTH OF FOUNDATION - PLUS 3" (76mm) OR MINUS 0".
5. DRILLED FOUNDATIONS OUT OF PLUMB - 1.0 DEGREE.
6. REINFORCING STEEL PLACEMENT - PER A.C.I. 301.
7. PROJECTION OF EMBEDMENTS - PLUS OR MINUS 1/8" (3mm).
8. VERTICAL EMBEDMENTS OUT OF PLUMB - 1/2 DEGREE.
9. MAXIMUM DISTANCE FROM CENTERLINE OF ANCHOR BOLTS TO CENTERLINE OF FOUNDATION - 1/24 OF PIER DIAMETER UP TO A MAXIMUM OF 2" (50mm).
10. ANCHOR BOLT SPACING - 1/16" (2mm).
11. ANCHOR BOLT CIRCLE ORIENTATION - 1/4 DEGREE.
12. ANCHOR BOLT CIRCLE DIAMETER - PLUS OR MINUS 1/16" (2mm).

!!! WARNING !!!

- AFTER ANCHOR BOLTS ARE INSTALLED AND CONCRETE HAS TAKEN ITS INITIAL SET, ANCHOR BOLTS MUST NOT BE MOVED, BENT OR REALIGNED IN ANY MANNER.

ANCHOR BOLT TIGHTENING NOTES

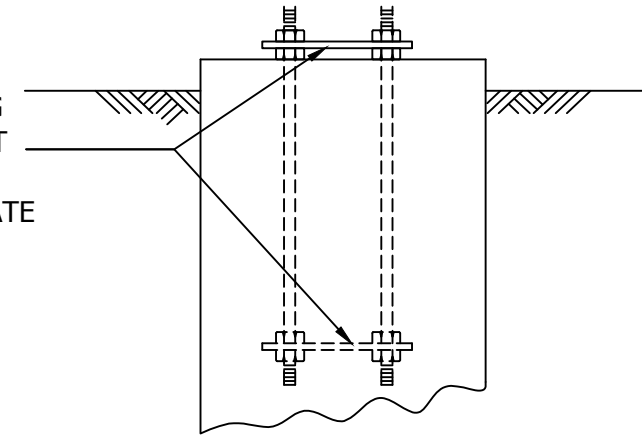
1. NUTS, THREADS AND ALL NUT CONTACT SURFACES MUST BE CLEANED AND LUBRICATED AFTER CONCRETE INSTALLATION AND IMMEDIATELY BEFORE INSTALLATION OF LEVELING AND TOP NUTS. NUTS MUST BE FREE TO MOVE THROUGHOUT THE ENTIRE LENGTH OF THE ANCHOR BOLT THREAD PROJECTION.
2. AFTER LEVELING THE LEVELING NUTS AND SETTING THE BASE PLATE, TOP NUTS MUST BE INSTALLED IN AN INCREMENTAL STAR TIGHTENING SEQUENCE TO A SNUG TIGHT CONDITION FOLLOWED BY TIGHTENING THE LEVELING NUTS IN A SIMILAR PATTERN TO A SNUG TIGHT CONDITION. SNUG TIGHT IS DEFINED BY THE TIGHTNESS OBTAINED WITH THE EFFORT OF ONE PERSON WITH A 12 INCH NOMINAL LENGTH WRENCH.
3. AFTER ALL TOP AND LEVELING NUTS ARE TIGHTENED TO A SNUG TIGHT CONDITION, TOP NUTS SHALL BE FURTHER TIGHTENED IN AN INCREMENTAL STAR PATTERN WITH THE LEVELING NUTS SECURED TO RESULT IN A 1/3 TOP NUT ROTATION FOR ANCHOR BOLTS 1-1/2 INCHES OR LESS IN DIAMETER, OR A 1/6 TOP NUT ROTATION FOR ANCHOR BOLTS GREATER THAN 1-1/2 INCHES IN DIAMETER.

NOTES

1. ALL ANCHOR BOLTS MUST MEET OR EXCEED REQUIREMENTS OF A.S.T.M. F1554-S2, S5 GRADE 105.
2. GROUT TO BE 5000 PSI MIN. ULTIMATE STRENGTH/7 DAY NON-SHRINKING AND NON-METALLIC.
3. SPECIAL CARE MUST BE TAKEN WHEN LIFTING ANCHOR BOLT CLUSTER, IN ORDER TO PREVENT ANCHOR BOLT TEMPLATE DISTORTION.
4. ANCHOR BOLT ASSEMBLY MUST BE ADEQUATELY SUPPORTED AND RESTRAINED TO PREVENT MOVEMENT OF THE CLUSTER DURING CONCRETE INSTALLATION.
5. IT IS THE RESPONSIBILITY OF THE FOUNDATION CONTRACTOR TO VERIFY THAT THE CORRECT ANCHOR BOLT TEMPLATE AND FOUNDATION SHOWN ON RESPECTIVE SITE DRAWINGS ARE BEING USED.
6. IT IS THE RESPONSIBILITY OF THE FOUNDATION DESIGN ENGINEER TO INSURE THAT THE ANCHORAGES PROVIDED ARE COMPATIBLE WITH THE PROPOSED FOUNDATION DESIGNS AND THAT THE CAPACITIES OF THE ANCHORAGES ARE NOT LIMITED BY THE STRENGTH OF THE FOUNDATIONS.

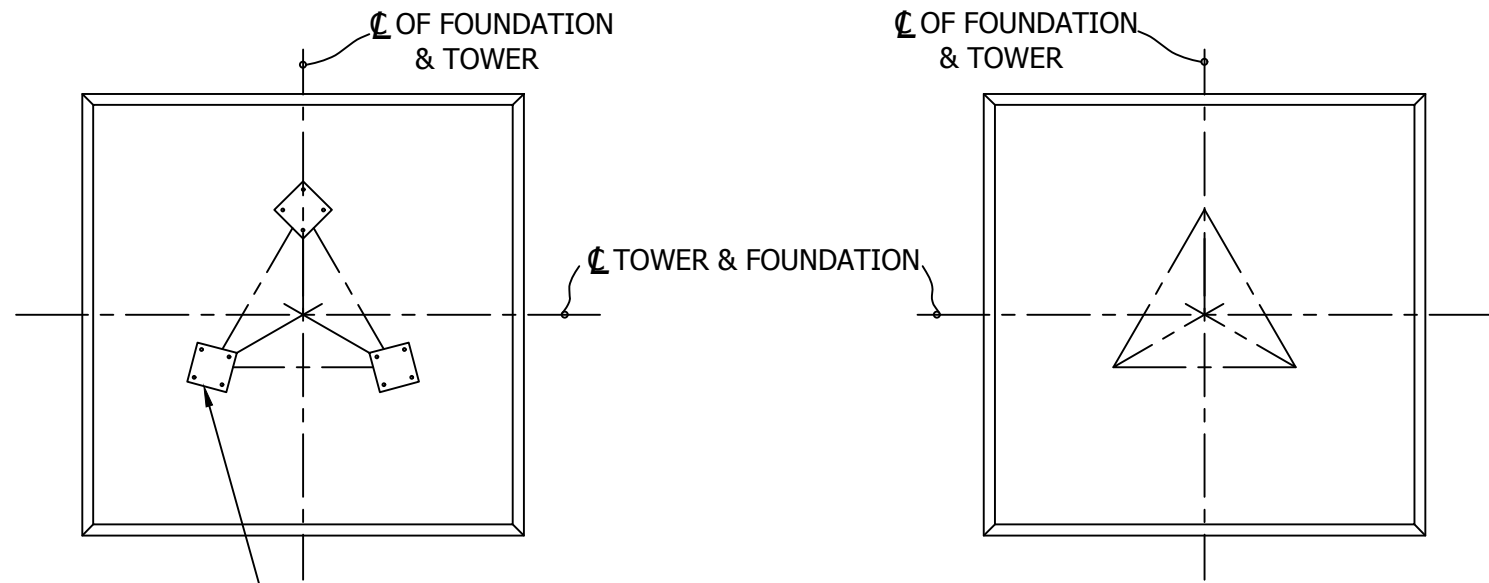
ANCHOR BOLT TEMPLATE INFORMATION					
ASSEMBLY	TEMPLATE	PT. NO	ANCHOR BOLTS	BASE FLANGE	TOWER BASE SECTION
PART NO.	TOP	BOTTOM	(12 REQ'D)	SIZE	(SEE TOWER ASS'Y.FOR EXACT P/N)
6NABDST	(3)VL25T	(3)VL25B	5/8 X 42"	5 X 5 X 3/4"	6N , 7N , 8N , 9N , 9NH
10NABDST	(3)VL26T	(3)VL26B	3/4 X 48"	6 X 6 X 3/4"	10N , 10NH
11NABDST1	(3)VL27T	(3)VL27B	7/8 X 42"	7 X 7 X 1"	11N , 12N , 12NH , 13N , 13NH
11NABDST			7/8 X 60"		
15NHABDST1	(3)VL28T	(3)VL28B	1 X 70"	9 1/2 X 9 1/2 X 1 1/4"	14N , 14NH , 15N , 15NH , 16N , 16NH
15NHABDST			1 X 78"		

ANCHOR BOLT SETTING
 TEMPLATES (SEE CHART
 FOR PART NO.REQ'D.)
 REMOVE UPPER TEMPLATE
 BEFORE INSTALLING
 TOWER.

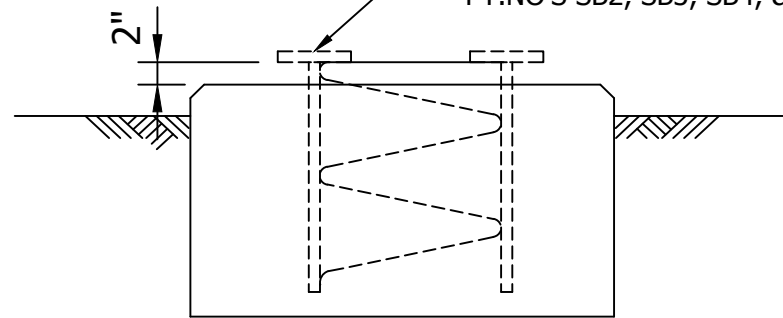


NOTES:

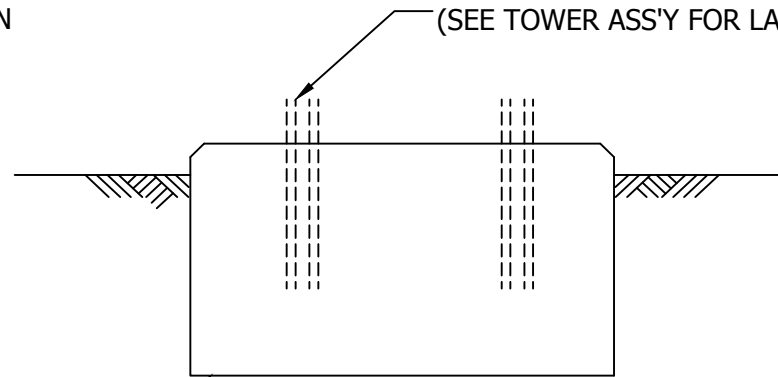
1. IT IS THE RESPONSIBILITY OF THE FOUNDATION CONTRACTOR TO VERIFY THAT THE CORRECT SETTING TEMPLATE & FOUNDATION DWG.ARE BEING USED.
2. CHECK NUMBER & SIZE OF ANCHOR BOLTS, SPACING, & BOLT CIRCLE DIA. ON TEMPLATE AGAINST ANCHOR BOLT LAYOUT DRAWING BEFORE INSTALLATION.
3. BOLT TEMPLATES ARE AVAILABLE FOR SECTIONS 6N THRU 16N OR 16NH.
4. ALLOW FOR DRAINAGE OF ALL PIPE LEG TOWER SECTION.
5. PART NO. IN CHART AT UPPER LEFT CONSISTS OF 12 ANCHOR BOLTS & 6 TEMPLATES.



ALL WELDED ' SB ' ASS'Y.
 FOR SECTION 2W, 3WN, 4N , & 5N
 PT.NO'S SB2, SB3, SB4, & SB5



INDEPENDENT ANCHOR BOLTS
 (SEE TOWER ASS'Y FOR LAYOUT INFO.)



PAD FOUNDATION FOR SECTIONS 1W-10N.
 PIER & PAD FOUNDATIONS FOR SECTION
 7N THRU 16N OR 16NH.

NOTE: SEE DWG. NO.B740973 FOR TEMPLATE FABRICATION DETAILS.
 NOTE: SEE DWG. NO. B050439 FOR TEMPLATE DETAILS.

FILE NO.	Standard-SSV			
REVISIONS				
REV.	DESCRIPTION	DWN	CHK	APP
4	UPDATED AND REDRAWN DATE: Nov/07/2005	KB3	KTL	H.A
5	REVISED NOTES & TEMPLATE INFO DATE: Jan/09/2006	JWS	KTL	HA

DWG REFERENCE	



6718 WEST PLANK ROAD
 PEORIA, IL 61604
 TOLL FREE 800-727-ROHN

THIS DRAWING IS THE PROPERTY OF ROHN. IT IS NOT TO BE REPRODUCED, COPIED OR TRACED IN WHOLE OR IN PART WITHOUT OUR WRITTEN CONSENT.

ANCHOR BOLT LAYOUT
 TEMPLATE INFO & SHORT BASE DETAILS

DWN: OH CHK'D: WDU DATE: Feb/14/1975

ENG'R: CW

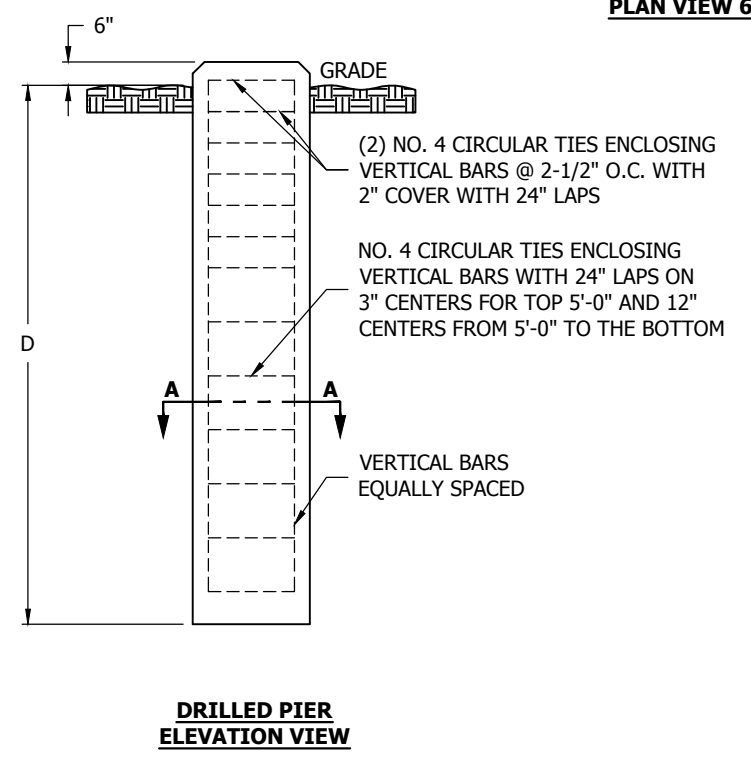
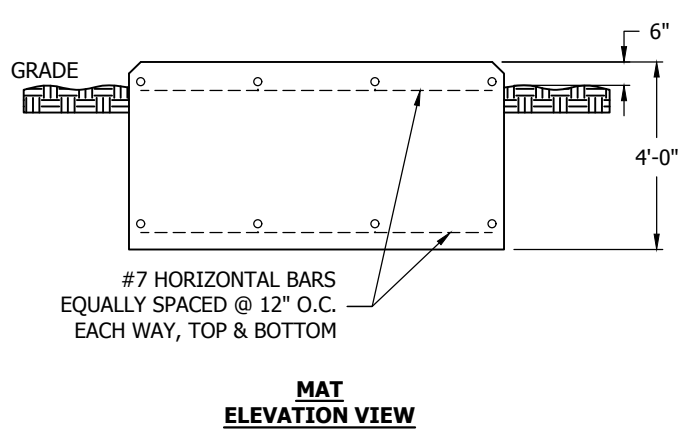
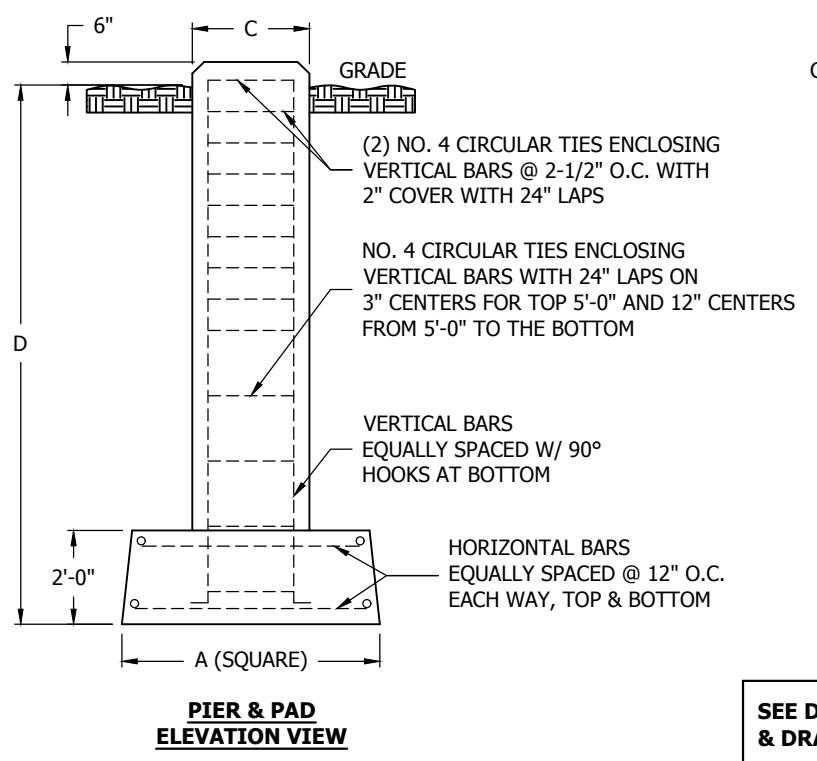
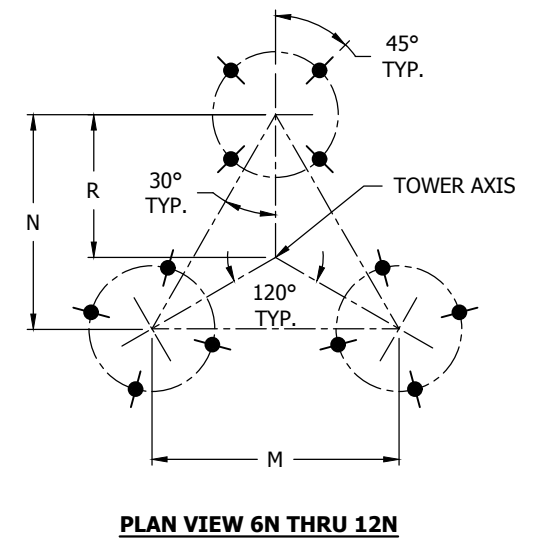
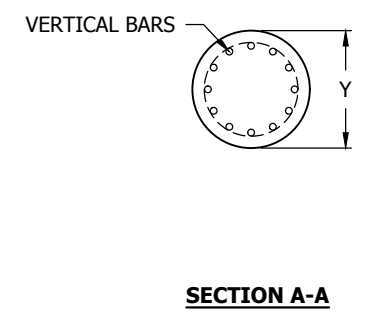
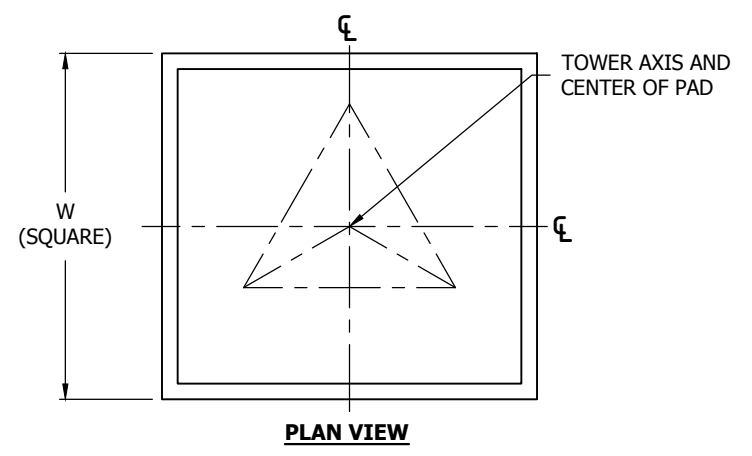
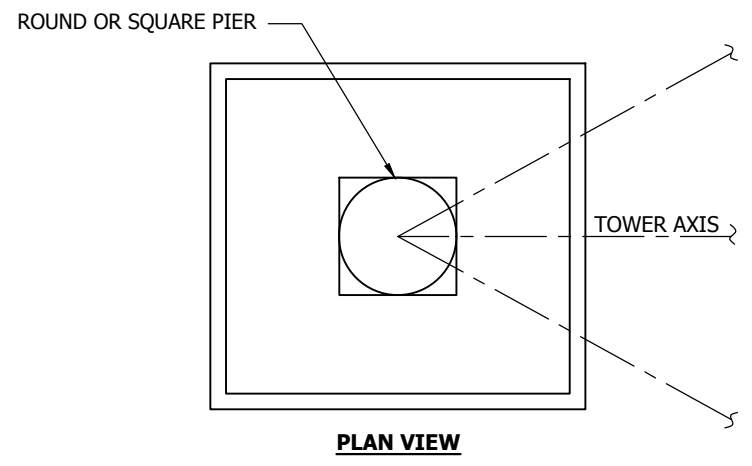
DRAWING NO: CU730104 REV: 5

Mar/01/2007 3:16:37 PM

Erection

SELF-SUPPORTING TOWER STANDARD FOUNDATIONS PER ANSI/TIA-222-G PRESUMPTIVE CLAY SOIL

TOWER BASE SECTION	ANCHOR BOLT DATA						PIER & PAD						MAT		DRILLED PIER				
	LAYOUT DIMENSIONS			A-BOLTS 12- REQ'D OR SHORT BASE	BOLT CIRCLE DIA. INCHES	PROJ. INCHES	DIMENSIONS			VERTICAL BARS	HORIZONTAL BARS	REQ'D CONCRETE (cu.yds-3 fnds)		W	REQ'D CONCRETE (cu.yds)	DIMENSIONS		VERTICAL BARS	REQ'D CONCRETE (cu.yds-3 fnds)
	M	N	R				D	A	C			ROUND PIER	SQUARE PIER			D	Y		
3WN	-	-	-	SB3	3 1/2	-	-	-	-	-	-	-	-	6'-9"	6.8	-	-	-	-
4N	-	-	-	SB4	4 1/4	-	-	-	-	-	-	-	-	8'-0"	9.5	-	-	-	-
5N	-	-	-	SB5	4 1/4	-	-	-	-	-	-	-	-	8'-9"	11.3	-	-	-	-
6N62	4'-6 1/4"	3'-11"	2'-7 5/16"	5/8X42	4 15/16	3 1/2	-	-	-	-	-	-	-	10'-3"	15.6	-	-	-	-
7N165	6'-6 3/4"	5'-8 3/16"	3'-9 1/2"	5/8X42	4 15/16	3 1/2	8'-0"	4'-6"	2'-0"	(8) - #6	#6	6.3	6.9	11'-6"	19.6	-	-	-	-
8N106	8'-6 3/4"	7'-5"	4'-11 5/16"	5/8X42	4 15/16	3 1/2	8'-0"	5'-0"	2'-0"	(8) - #6	#7	7.3	7.9	14'-3"	30.1	15'-0"	2'-6"	(8) - #8	8.4
9N325/9N82	10'-6 3/4"	9'-1 3/4"	6'-1 3/16"	5/8X42	4 15/16	3 1/2	8'-0"	5'-6"	2'-0"	(8) - #6	#7	8.4	9	16'-0"	37.9	18'-0"	2'-6"	(8) - #8	10.2
10N387/10N183	12'-7 1/4"	10'-11"	7'-3 5/16"	3/4X48	5 21/32	4	8'-6"	5'-6"	2'-0"	(8) - #6	#7	8.6	9.2	18'-3"	49.3	20'-0"	2'-6"	(8) - #8	11.1
11N332	14'-7 7/8"	12'-8 5/16"	8'-5 9/16"	7/8X60	7 1/16	5	9'-0"	6'-0"	2'-6"	(8) - #8	#7	11.4	12.6	-	-	22'-0"	2'-6"	(8) - #8	12.3
12N18	16'-8 3/8"	14'-5 9/16"	9'-7 11/16"	7/8X60	7 1/16	5	9'-0"	6'-6"	2'-6"	(8) - #8	#7	12.8	13.9	-	-	25'-0"	2'-6"	(8) - #8	13.9



SEE DRAWING B090548 FOR GENERAL FOUNDATION NOTES & DRAWING B050439 FOR ANCHOR BOLT LAYOUT

FILE NO.				
REVISIONS				
REV	DESCRIPTION	DWN	CHK	APP
3	ADDED 12N FOUNDATIONS	SM	HA	HA
DATE: 11/25/14				

ROHN
PRODUCTS
PO BOX 5999
PEORIA, IL 61601-5999
TOLL FREE 800-727-ROHN

THIS DRAWING IS THE PROPERTY OF ROHN. IT IS NOT TO BE REPRODUCED, COPIED OR TRACED IN WHOLE OR IN PART WITHOUT OUR WRITTEN CONSENT.

**SELF-SUPPORTING TOWER
STANDARD FOUNDATIONS
ANSI/TIA-222-G**

DWN: CEJ	CHK'D: SM	DATE: 01/24/13
ENG'R: HA	SHEET #:	
PRJ. ENG'R:	PRJ. MANG'R:	
DRAWING NO: DWG-0693	REV: 3	

STANDARD FOUNDATION NOTES
ANSI/TIA-222-G

1. STANDARD FOUNDATION DESIGNS ARE IN ACCORDANCE WITH ANSI/TIA-222-G, "STRUCTURAL STANDARDS FOR STEEL ANTENNA TOWERS AND ANTENNA SUPPORTING STRUCTURES", SECTION 9 AND ANNEX F FOR THE FOLLOWING PRESUMPTIVE CLAY SOIL PARAMETERS:

N (blows/ft) [blows/m]	Φ (deg)	Y (lb/ft ³) [kN/m ³]	C (psf) [kPa]	Ultimate Bearing (psf) [kPa]		Ultimate Skin Friction (psf) [kPa]	k (pci) [kN/m ³]	ε ₅₀
				Shallow Fnds.	Deep Fnds.			
8 [26]	0	110 [17]	1000 [48]	5000 [240]	9000 [431]	500 [24]	150 [41,000]	0.01

2. THE PURCHASER MUST VERIFY THAT ACTUAL SITE SOIL PARAMETERS MEET OR EXCEED ANSI/TIA-222-G PRESUMPTIVE CLAY SOIL DESIGN PARAMETERS AND THAT THE PENETRATION AND/OR ZONE OF SEASONAL MOISTURE VARIATION AT THE SITE. FOUNDATION DESIGN MODIFICATIONS MAY BE REQUIRED IN THE EVENT PRESUMPTIVE CLAY SOIL PARAMETERS ARE NOT APPLICABLE FOR THE ACTUAL SUBSURFACE CONDITIONS ENCOUNTERED.
3. A SITE-SPECIFIC INVESTIGATION IS REQUIRED FOR CLASS III STRUCTURES IN ACCORDANCE WITH ANSI/TIA-222-G.
4. FOUNDATION DESIGNS ASSUME FIELD INSPECTIONS WILL BE PERFORMED BY THE PURCHASER'S REPRESENTATIVE TO VERIFY THAT CONSTRUCTION MATERIALS, INSTALLATION METHODS AND ASSUMED DESIGN PARAMETERS ARE ACCEPTABLE BASED ON THE CONDITIONS EXISTING AT THE SITE.
5. WORK SHALL BE IN ACCORDANCE WITH LOCAL CODES, SAFETY REGULATIONS AND UNLESS OTHERWISE NOTED, THE LATEST REVISION OF ACI 318, "BUILDING CODE REQUIREMENTS FOR REINFORCED CONCRETE". PROCEDURES FOR THE PROTECTION OF EXCAVATIONS, EXISTING CONSTRUCTION AND UTILITIES SHALL BE ESTABLISHED PRIOR TO FOUNDATION INSTALLATION.
6. CONCRETE MATERIALS SHALL CONFORM TO THE APPROPRIATE STATE REQUIREMENTS FOR EXPOSED STRUCTURAL CONCRETE.
7. PROPORTIONS OF CONCRETE MATERIALS SHALL BE SUITABLE FOR THE INSTALLATION METHOD UTILIZED AND SHALL RESULT IN DURABLE CONCRETE FOR RESISTANCE TO LOCAL ANTICIPATED AGGRESSIVE ACTIONS. THE DURABILITY REQUIREMENT OF ACI 318 CHAPTER 4 SHALL BE SATISFIED BASED ON THE CONDITIONS EXPECTED AT THE SITE. AS A MINIMUM, CONCRETE SHALL DEVELOP A MINIMUM COMPRESSIVE STRENGTH OF 4500 PSI (31.0 MPa) IN 28 DAYS.
8. MAXIMUM SIZE OF AGGREGATE SHALL NOT EXCEED SIZE SUITABLE FOR INSTALLATION METHOD UTILIZED OR 1/3 CLEAR DISTANCE BEHIND OR BETWEEN REINFORCING. MAXIMUM SIZE MAY BE INCREASED TO 2/3 CLEAR DISTANCE PROVIDED WORKABILITY AND METHODS OF CONSOLIDATION SUCH AS VIBRATING WILL PREVENT HONEYCOMBS OR VOIDS.
9. REINFORCEMENT SHALL BE DEFORMED AND CONFORM TO THE REQUIREMENTS OF ASTM A615 GRADE 60 UNLESS OTHERWISE NOTED. SPLICES IN REINFORCEMENT SHALL NOT BE ALLOWED UNLESS OTHERWISE INDICATED.
10. REINFORCING CAGES SHALL BE BRACED TO RETAIN PROPER DIMENSIONS DURING HANDLING, THROUGHOUT PLACEMENT OF CONCRETE AND DURING EXTRACTION OF TEMPORARY CASING.
11. WELDING IS PROHIBITED ON REINFORCING STEEL AND EMBEDMENTS.

12. MINIMUM CONCRETE COVER FOR REINFORCEMENT SHALL BE 3 INCHES (76 mm) UNLESS OTHERWISE NOTED. APPROVED SPACERS SHALL BE USED TO INSURE A 3 INCH (76 mm) MINIMUM COVER ON REINFORCEMENT. CONCRETE COVER FROM TOP OF FOUNDATION TO ENDS OF VERTICAL REINFORCEMENT SHALL NOT EXCEED 3 INCHES (76 mm) NOR BE LESS THAN 2 INCHES (51 mm).
13. SPACERS SHALL BE ATTACHED INTERMITTENTLY THROUGHOUT THE ENTIRE LENGTH OF VERTICAL REINFORCING CAGES TO INSURE CONCENTRIC PLACEMENT OF CAGES IN EXCAVATIONS.
14. FOUNDATION DESIGNS ASSUME STRUCTURAL BACKFILL TO BE COMPACTED IN 8 INCH (200 mm) MAXIMUM LAYERS TO 95% OF MAXIMUM DRY DENSITY AT OPTIMUM MOISTURE CONTENT IN ACCORDANCE WITH ASTM D698. ADDITIONALLY, STRUCTURAL BACKFILL MUST HAVE A MINIMUM COMPACTED UNIT WEIGHT OF 100 POUNDS PER CUBIC FOOT (16 kN/m³).
15. FOUNDATION DESIGNS ASSUME LEVEL GRADE AT THE SITE.
16. FOUNDATION INSTALLATION SHALL BE SUPERVISED BY PERSONNEL KNOWLEDGEABLE AND EXPERIENCED WITH THE PROPOSED FOUNDATION TYPE. CONSTRUCTION SHALL BE IN ACCORDANCE WITH GENERALLY ACCEPTED INSTALLATION PRACTICES.
17. FOR FOUNDATION AND ANCHOR TOLERANCES SEE DRAWING A810214.
18. LOOSE MATERIAL SHALL BE REMOVED FROM BOTTOM OF EXCAVATION PRIOR TO CONCRETE PLACEMENT. SIDES OF EXCAVATION SHALL BE ROUGH AND FREE OF LOOSE CUTTINGS.
19. CONCRETE SHALL BE PLACED IN A MANNER THAT WILL PREVENT SEGREGATION OF CONCRETE MATERIALS, INFILTRATION OF WATER OR SOIL AND OTHER OCCURRENCES WHICH MAY DECREASE THE STRENGTH OR DURABILITY OF THE FOUNDATION.
20. FREE FALL CONCRETE MAY BE USED PROVIDED FALL IS VERTICAL DOWN WITHOUT HITTING SIDES OF EXCAVATION, FORMWORK, REINFORCING BARS, FORM TIES, CAGE BRACING OR OTHER OBSTRUCTIONS. UNDER NO CIRCUMSTANCES SHALL CONCRETE FALL THROUGH WATER.
21. CONCRETE SHALL BE PLACED AGAINST UNDISTURBED SOIL EXCEPT FOR PIERS OR PIER AND PAD FOUNDATIONS. FORMS FOR PIERS SHALL BE REMOVED PRIOR TO PLACING STRUCTURAL BACKFILL.
22. CONSTRUCTION JOINTS, IF REQUIRED IN PIER MUST BE AT LEAST 12 INCHES (305 mm) BELOW BOTTOM OF EMBEDMENTS AND MUST BE INTENTIONALLY ROUGHENED TO A FULL AMPLITUDE OF 1/4 INCH (6 mm). FOUNDATION DESIGN ASSUMES NO OTHER CONSTRUCTION JOINTS.
23. CASING, IF USED, SHALL NOT BE LEFT IN PLACE. EQUIPMENT, PROCEDURES, AND PROPORTIONS OF CONCRETE MATERIALS SHALL INSURE CONCRETE WILL NOT BE ADVERSELY DISTURBED UPON CASING REMOVAL. DRILLING FLUID, IF USED, SHALL BE FULLY DISPLACED BY CONCRETE AND SHALL NOT BE DETRIMENTAL TO CONCRETE OR SURROUNDING SOIL. CONTAMINATED CONCRETE SHALL BE REMOVED FROM TOP OF FOUNDATION AND REPLACED WITH FRESH CONCRETE.
24. TOP OF FOUNDATION SHALL BE SLOPED TO DRAIN WITH A FLOATED FINISHED. EXPOSED EDGES OF CONCRETE SHALL BE CHAMFERED 3/4" X 3/4" (19 mm X 19 mm) MINIMUM.
25. FOR ANCHOR BLOCK TYPE FOUNDATIONS, FOR GUYED TOWERS, ADDITIONAL CORROSION PROTECTION MAY BE REQUIRED FOR STEEL GUY ANCHORS IN DIRECT CONTACT WITH SOIL. DESIGN ASSUMES PERIODIC INSPECTIONS WILL BE PERFORMED OVER THE LIFE OF THE STRUCTURE TO DETERMINE IF ADDITIONAL ANCHOR CORROSION PROTECTION MEASURES MUST BE IMPLEMENTED BASED ON OBSERVED SITE-SPECIFIC CONDITIONS.

FILE NO.

REVISIONS

REV.	DESCRIPTION	DWN	CHK	APP
2	REVISED NOTE 7 TO 4500 PSI DATE: 2/10/2014	JHY	HA	HA



PO BOX 5999
PEORIA, IL 61601-5999
TOLL FREE 800-727-ROHN

THIS DRAWING IS THE PROPERTY OF ROHN. IT IS NOT TO BE REPRODUCED, COPIED OR TRACED IN WHOLE OR IN PART WITHOUT OUR WRITTEN CONSENT.

ANSI/TIA-222-G
STANDARD FOUNDATION NOTES

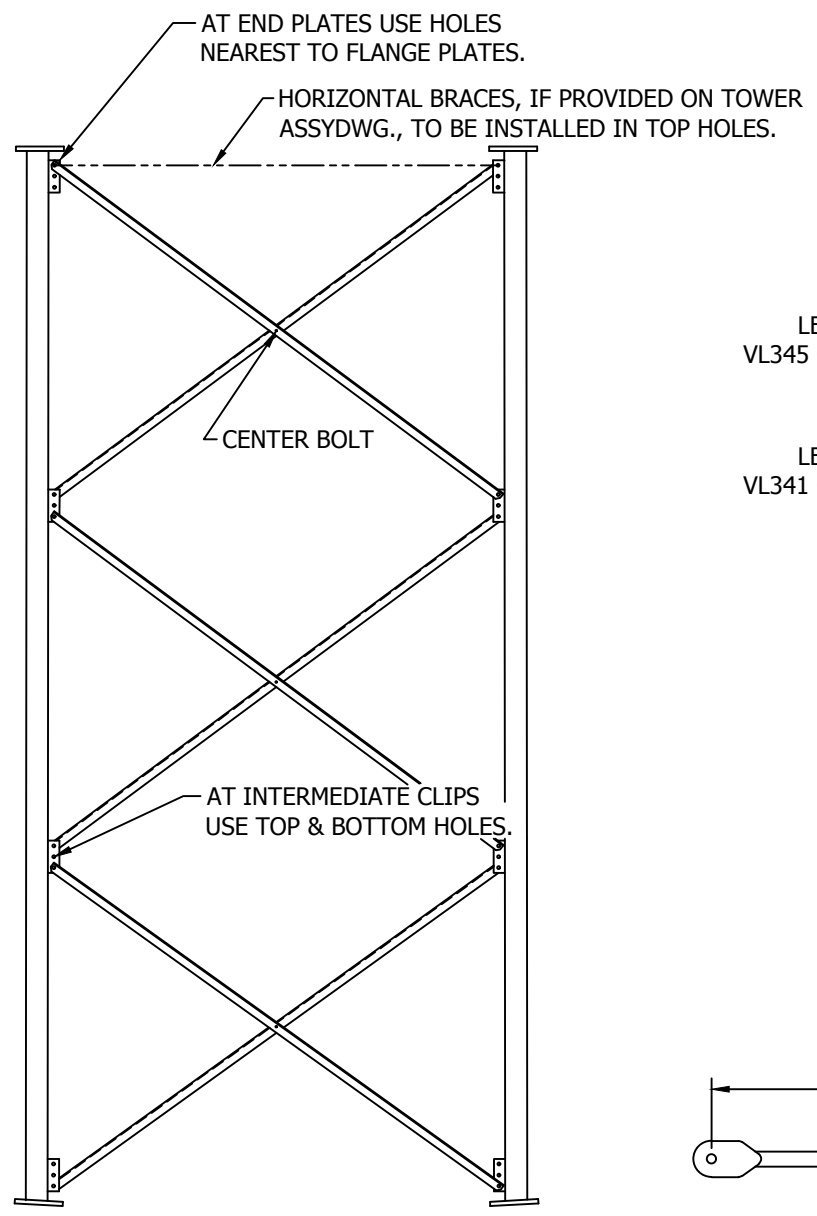
DWN: FAD	CHK'D: HA	DATE: Nov/20/2009
-------------	--------------	----------------------

ENG'R: HA	SHEET #: 1 OF 1
--------------	--------------------

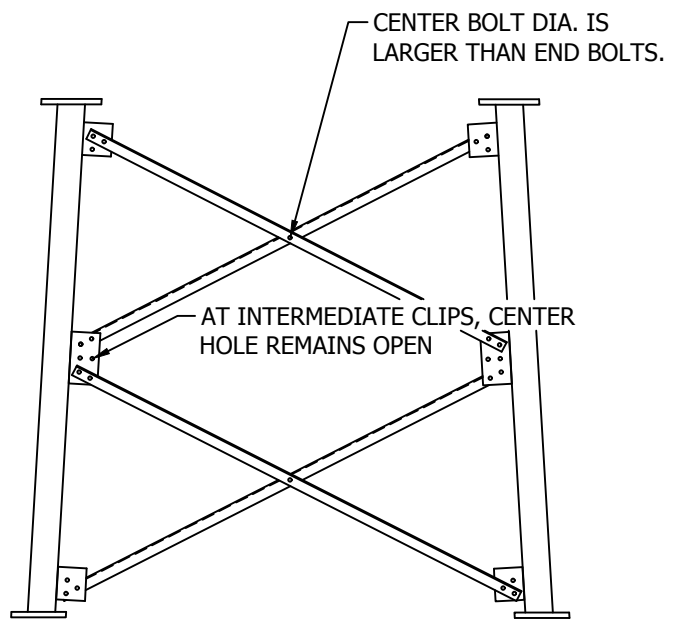
PRJ. ENG'R:	PRJ. MANG'R:
-------------	--------------

DRAWING NO: B090548	REV: 2
------------------------	-----------

FILE NO.	Standard-SSV			
REVISIONS				
REV.	DESCRIPTION	DWN	CHK	APP
8	VL341 WAS VL346	M.F	JDM	H.A
DATE: Mar/21/2006				

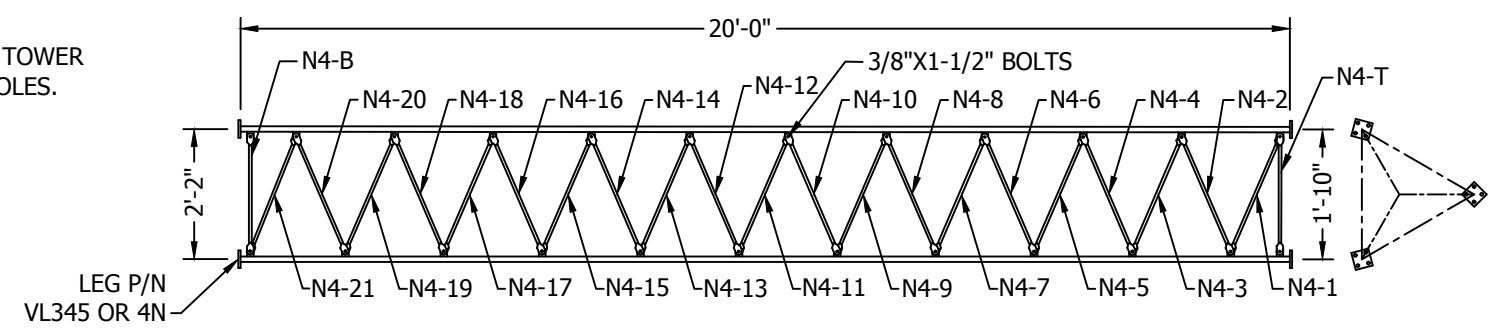


TYPICAL ONE BOLT, BRACE CONNECTION DETAIL

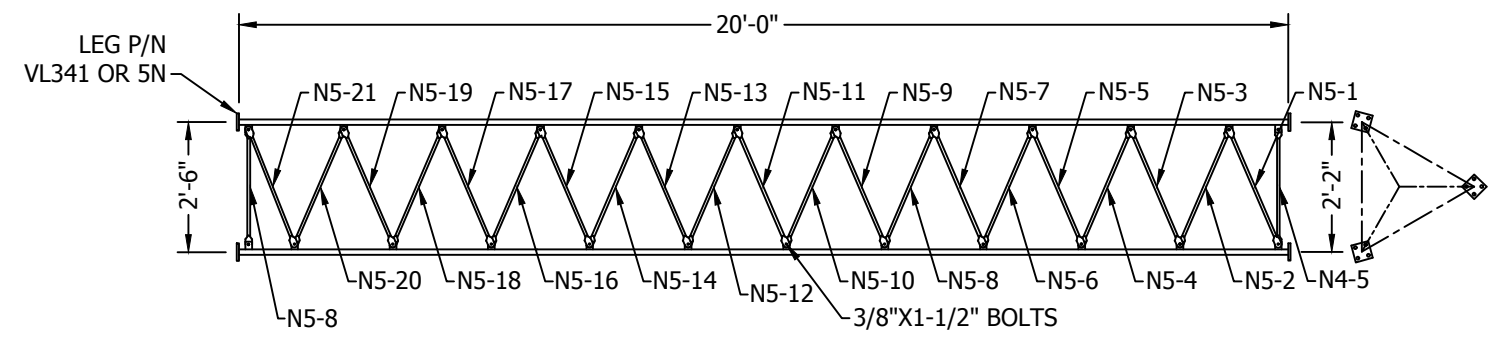


TYPICAL TWO-BOLT, BRACE CONNECTION DETAIL

NOTE: SECTIONS SHOULD BE ASSEMBLED ON EVEN GROUND & LEVELED TO INSURE STRAIGHTNESS

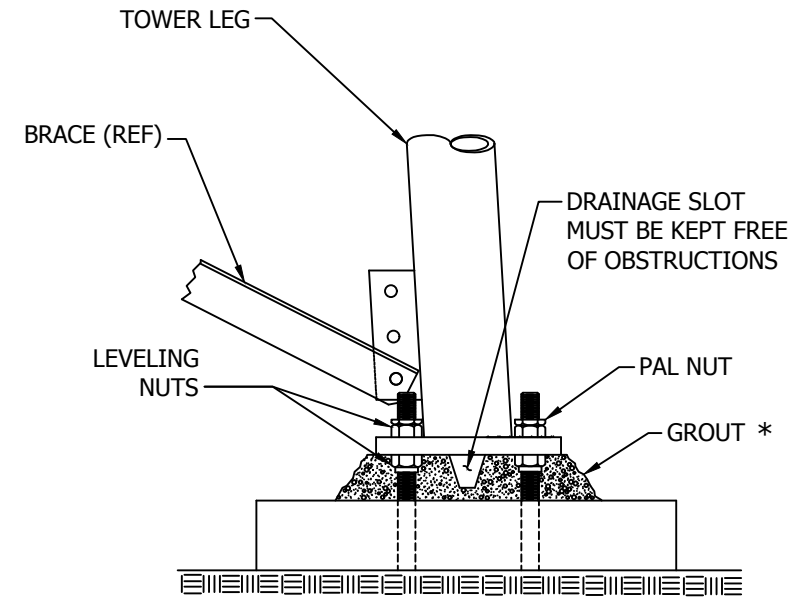
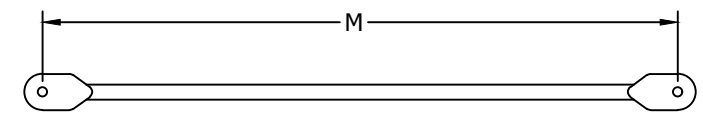


SECTION 4N



SECTION 5N

IMPORTANT: LEG P/N IS STAMPED AT BOTTOM OF BASE FLANGE PLATE OF EACH SECTION LEG.



GROUTING AND DRAINAGE DETAILS

* GROUT MUST BE STRUCTURAL & MUST BE 5000 PSI (34.5 MPa) MINIMUM ULTIMATE STRENGTH NON-SHRINK & NON-METALLIC OR APPROVED EQUAL AND INSTALLED ACCORDING TO MANUFACTURER'S RECOMMENDATIONS.

SECTION 4N		SECTION 5N	
P/N	M	P/N	M
N4-1	21 3/8"	N5-1	24 3/4"
N4-2	21 15/16"	N5-2	25 1/4"
N4-3	22 1/16"	N5-3	25 7/16"
N4-4	22 1/4"	N5-4	25 5/8"
N4-5	22 3/8"	N5-5	25 3/4"
N4-6	22 9/16"	N5-6	25 15/16"
N4-7	22 3/4"	N5-7	26 1/8"
N4-8	22 7/8"	N5-8	26 1/4"
N4-9	23 1/16"	N5-9	26 7/16"
N4-10	23 3/16"	N5-10	26 5/8"
N4-11	23 3/8"	N5-11	26 3/4"
N4-12	23 9/16"	N5-12	26 15/16"
N4-13	23 11/16"	N5-13	27 1/8"
N4-14	23 7/8"	N5-14	27 5/16"
N4-15	24 1/16"	N5-15	27 7/16"
N4-16	24 3/16"	N5-16	27 5/8"
N4-17	24 3/8"	N5-17	27 13/16"
N4-18	24 9/16"	N5-18	28"
N4-19	24 11/16"	N5-19	28 1/8"
N4-20	24 7/8"	N5-20	28 5/16"
N4-21	25 1/16"	N5-21	28 1/2"
N4-T	18 9/16"		
N4-B	22 1/2"		

DWG REFERENCE	



6718 WEST PLANK ROAD
PEORIA, IL 61604
TOLL FREE 800-727-ROHN

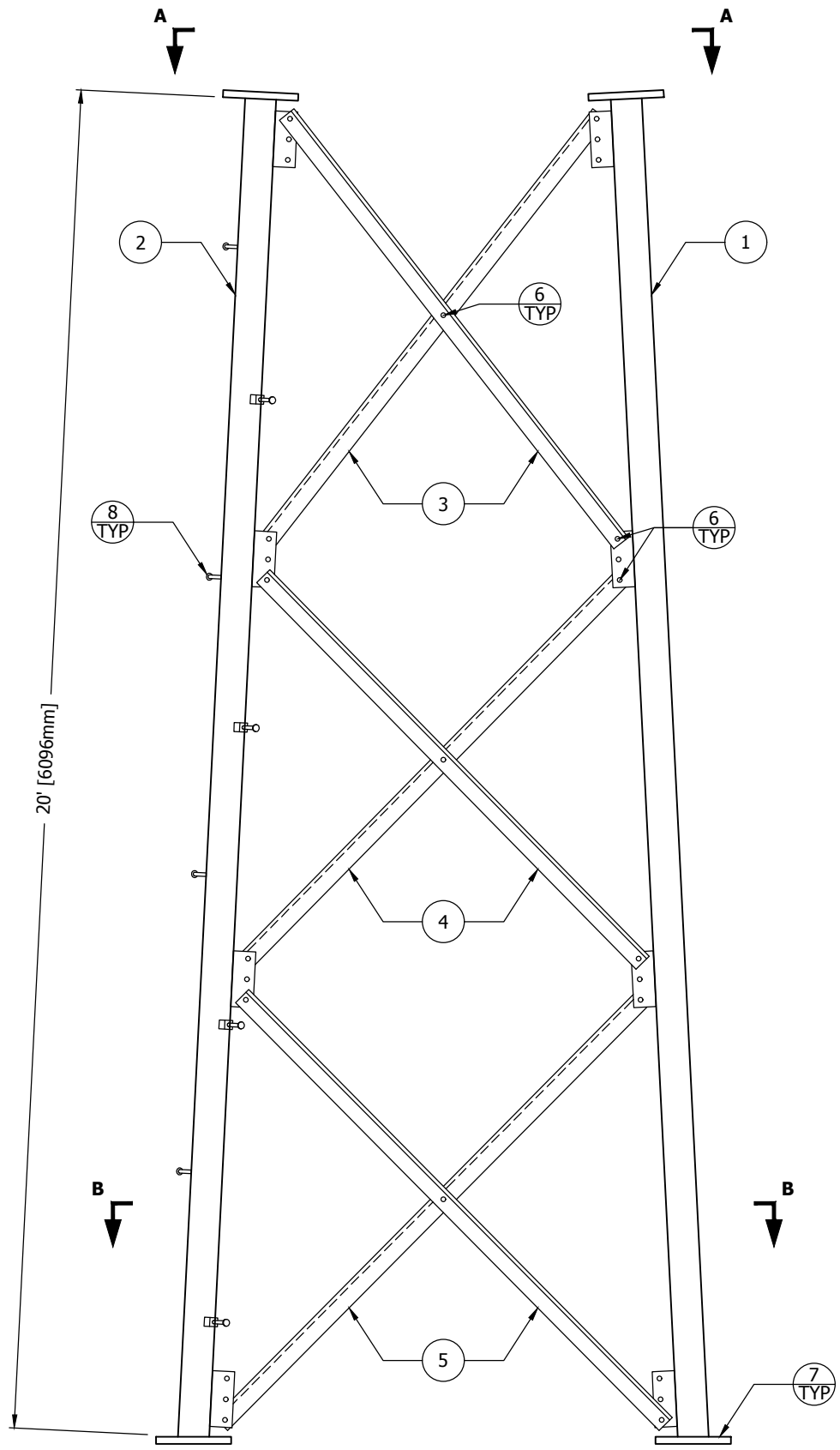
THIS DRAWING IS THE PROPERTY OF ROHN. IT IS NOT TO BE REPRODUCED, COPIED OR TRACED IN WHOLE OR IN PART WITHOUT OUR WRITTEN CONSENT.

TOWER PROFILE GROUTING & DRAINAGE DETAIL		
DWN:	CHK'D:	DATE:
O.H	WDU	Mar/03/1972
ENG'R:	TWS	

DRAWING NO:	REV:
SK720305	8

Aug/29/2006 11:57:47 AM

Erection



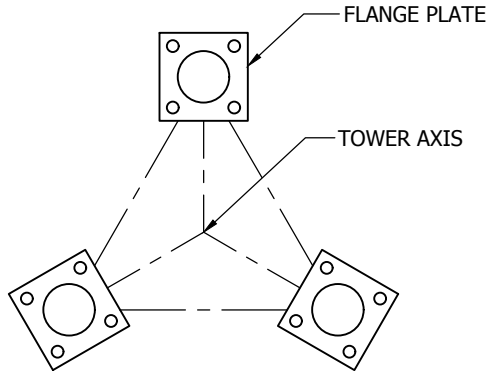
ELEVATION VIEW

FLANGE	OFFSET	BEVEL	FLANGE PLATE (P/N)	SPREAD
TOP	N/A	N/A	5" X 5" X 3/4" (P/N: 5C)	10'-6 3/4" [3219mm]
BOTTOM	1/4" [6mm]	3 1/3° STD	6" X 6" X 3/4" (P/N: 6A)	12'-7 1/4" [3842mm]

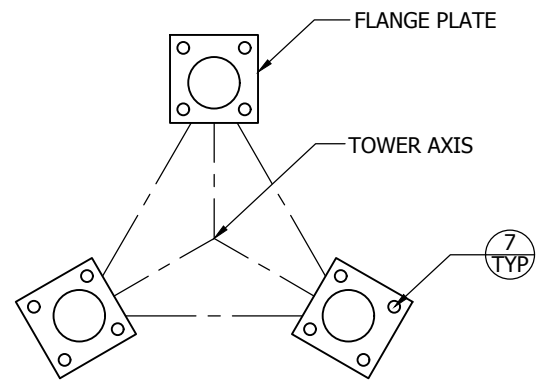
SECTION ASSEMBLY P/N: 10N387				
BILL OF MATERIAL				
ITEM	PART NO.	QTY	DESCRIPTION	
1	VL5906	2	LEG SSV 9-11N 2.5STD 20'5 6	[PIPE 64mm STD]
2	VL5906S	1	LEG SSV 9-11N 2.5STD 20'5 6	[PIPE 64mm STD]
3	N101	6	BRACE DS SS10T L2X.13X12.29'	[L 51x51x3]
4	N102	6	BRACE DS SS10T L2X.13X12.86'	[L 51x51x3]
5	N103	6	BRACE DS SS10T L2X.13X13.35'	[L 51x51x3]
6	210017GA	45	BOLT ASSY 1/2 X 1-1/4 HSB A325	[M 13x32]
7	110162	12	NUT 3/4 (JAM -PAL) HDG	[M 19]
8	5/8STEP	16	BOLT ASSY STEP 5/8X7 W/DBN	[M16x178]

GENERAL NOTES:

- LEG PART NUMBER IS STAMPED AT THE BOTTOM OF EACH LEG AND MUST BE LOCATED AT THE BOTTOM OF THE SECTION FOR PROPER ASSEMBLY.
- STEP BOLTS ARE PROVIDED ON 1 LEG ONLY.
- THIS SECTION IS A BASE SECTION. SEE THE TOWER ASSEMBLY FOR ANCHOR BOLTS. PAL NUTS ARE SUPPLIED FOR THE ANCHOR BOLTS.
- DRAWING IS N.T.S. AND IS FOR ASSEMBLY PURPOSES ONLY.
- NOMINAL METRIC EQUIVALENTS ARE GIVEN FOR REFERENCE ONLY AND SHALL NOT BE SUBSTITUTED FOR THE DESCRIBED SIZES UNLESS OTHERWISE APPROVED BY ROHN PRODUCTS.



VIEW A-A



VIEW B-B

FILE NO.				
REVISIONS				
REV	DESCRIPTION	DWN	CHK	APP
1	REDRAWN	JHY	KTL	HA
DATE: Sep/11/2012				

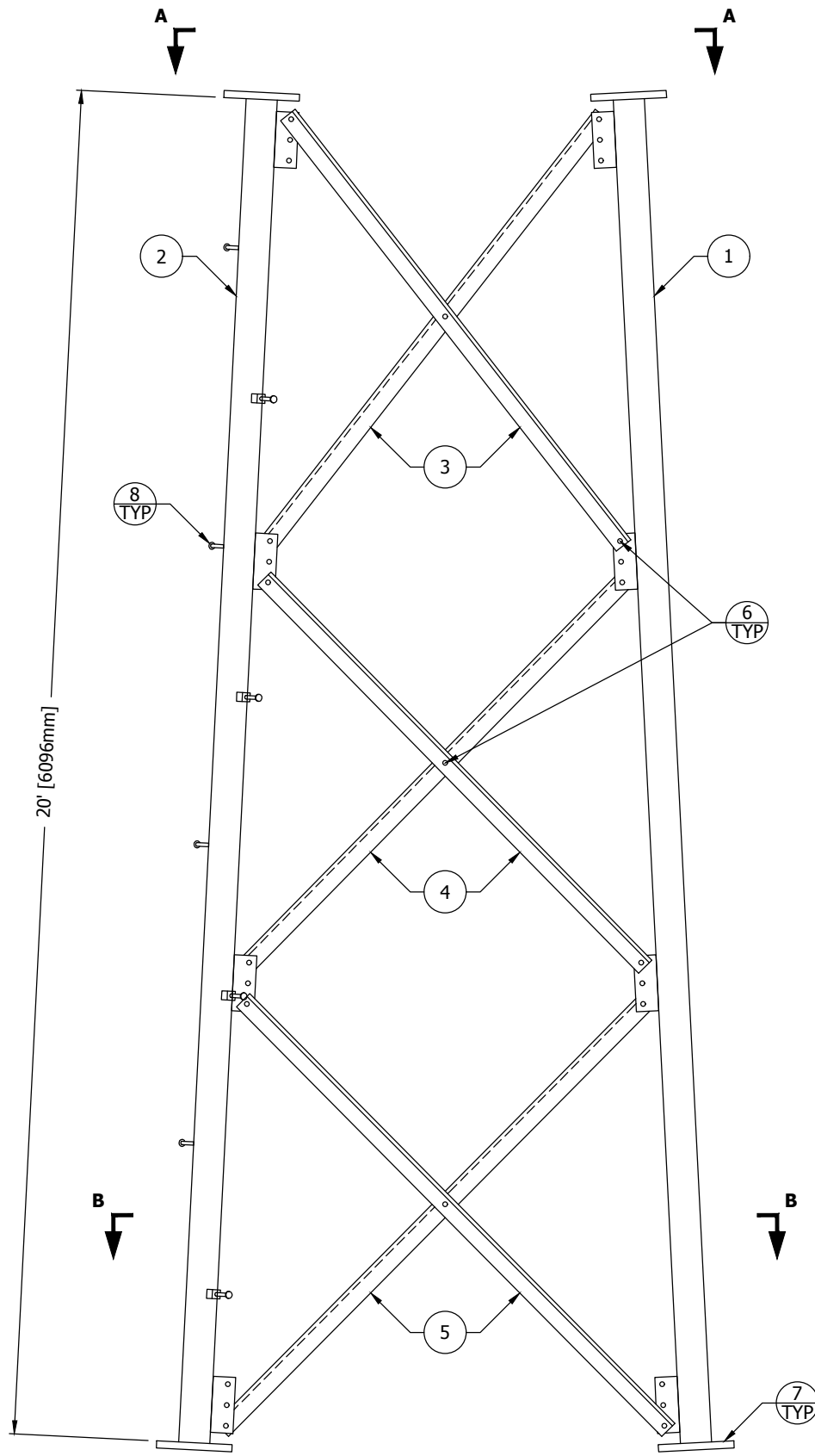


PO BOX 5999
PEORIA, IL 61601-5999
TOLL FREE 800-727-ROHN

THIS DRAWING IS THE PROPERTY OF ROHN. IT IS NOT TO BE REPRODUCED, COPIED OR TRACED IN WHOLE OR IN PART WITHOUT OUR WRITTEN CONSENT.

**SECTION ASSEMBLY
DETAILS FOR SSV 10N387 (BASE)**

DWN:	JK	CHK'D:	JDM	DATE:	Aug/22/2007
ENG'R:	HA	SHEET #:	1 OF 1		
PRJ. ENG'R:		PRJ. MANG'R:			
DRAWING NO:	A070498			REV:	1



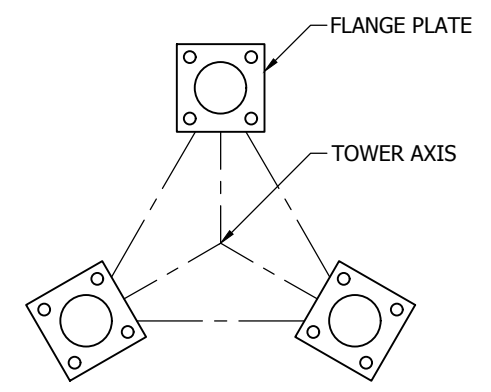
ELEVATION VIEW

FLANGE	OFFSET	BEVEL	FLANGE PLATE (P/N)	SPREAD
TOP	N/A	N/A	5" X 5" X 3/4" (P/N: 5C)	8'-6 3/4" [2610mm]
BOTTOM	N/A	N/A	5" X 5" X 3/4" (P/N: 5C)	10'-6 3/4" [3219mm]

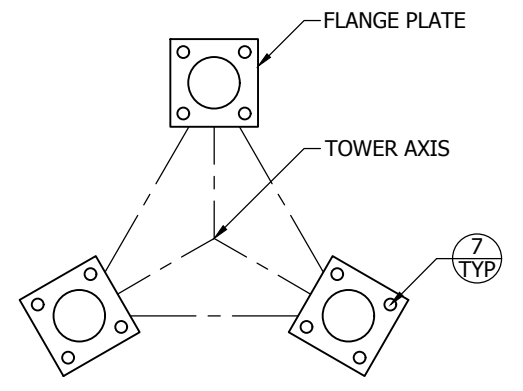
SECTION ASSEMBLY P/N: 9N				
BILL OF MATERIAL				
ITEM	PART NO.	QTY	DESCRIPTION	
1	VL358	2	LEG SSV 9-11N 2.5STD 20'5 5 S9	[PIPE 64mm STD]
2	VL358S	1	LEG SSV 9-11N 2.5STD 20'5 5 S9	[PIPE 64mm STD]
3	N91	6	BRACE DS SS9T L1.75X.13X10.63'	[L 44x44x3]
4	N92	6	BRACE DS SS9T L1.75X.13X11.17'	[L 44x44x3]
5	N93	6	BRACE DS SS9T L1.75X.13X11.61'	[L 44x44x3]
6	210017GA	45	BOLT ASSY 1/2 X 1-1/4 HSB A325	[M13x32]
7	210033GA	12	BOLT ASSY 5/8 X 2-1/2 HSB A325	[M16x64]
8	5/8STEP	16	BOLT ASSY STEP 5/8X7 W/DBN	[M16x178]

GENERAL NOTES:

- LEG PART NUMBER IS STAMPED AT THE BOTTOM OF EACH LEG AND MUST BE LOCATED AT THE BOTTOM OF THE SECTION FOR PROPER ASSEMBLY.
- STEP BOLTS ARE PROVIDED ON ONE LEG ONLY.
- FLANGE BOLTS ARE FOR FLANGE PLATES AT THE BOTTOM OF THE SECTION.
- DRAWING IS N.T.S. AND IS FOR ASSEMBLY PURPOSES ONLY.
- NOMINAL METRIC EQUIVALENTS ARE GIVEN FOR REFERENCE ONLY AND SHALL NOT BE SUBSTITUTED FOR THE DESCRIBED SIZES UNLESS OTHERWISE APPROVED BY ROHN PRODUCTS.



VIEW A-A



VIEW B-B

FILE NO.				
REVISIONS				
REV	DESCRIPTION	DWN	CHK	APP
4	REDRAWN	JHY	JDM	HA
DATE: Dec/6/2012				

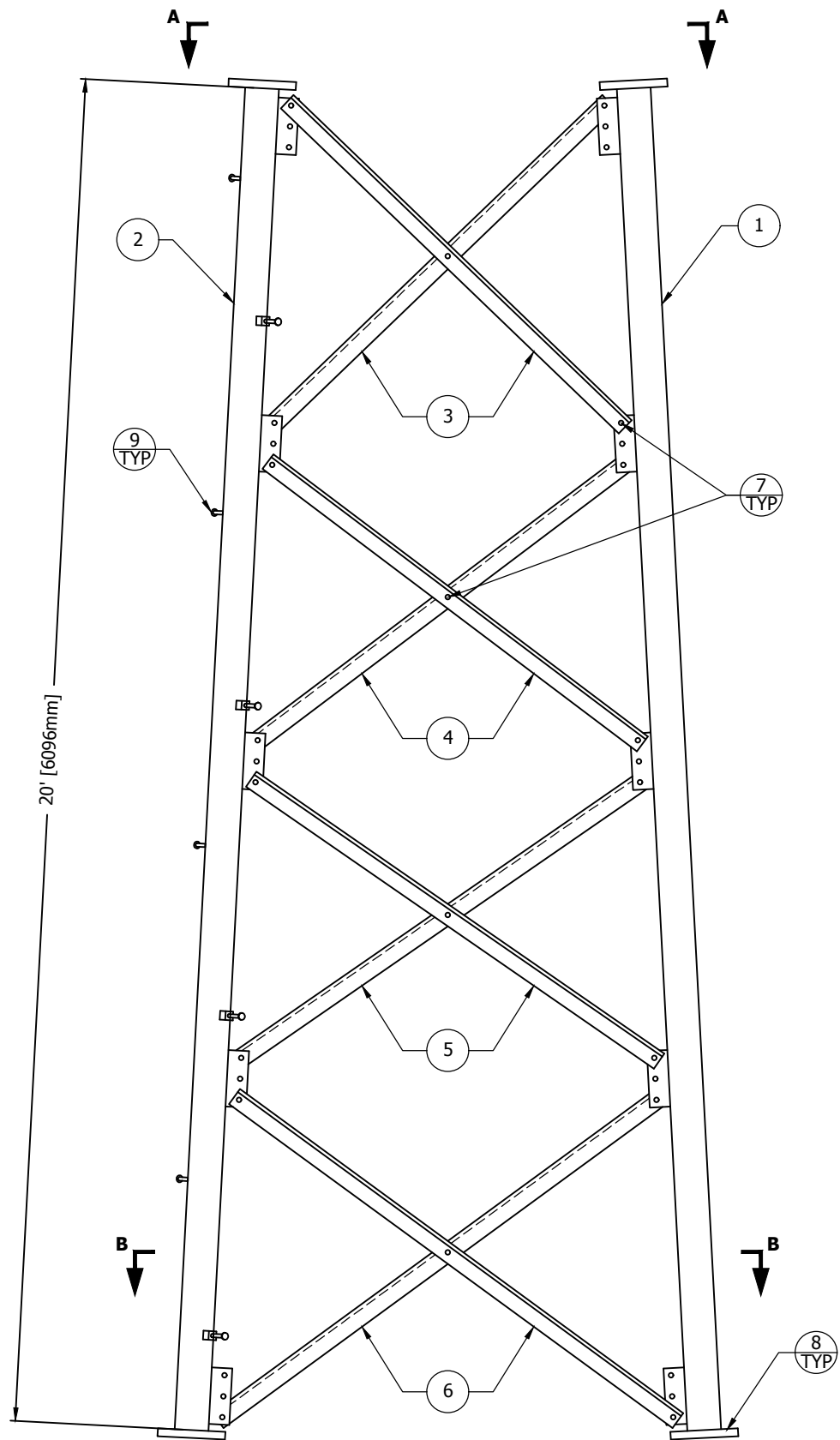


PO BOX 5999
PEORIA, IL 61601-5999
TOLL FREE 800-727-ROHN

THIS DRAWING IS THE PROPERTY OF ROHN. IT IS NOT TO BE REPRODUCED, COPIED OR TRACED IN WHOLE OR IN PART WITHOUT OUR WRITTEN CONSENT.

**SECTION ASSEMBLY
DETAILS FOR SSV 9N**

DWN: AED	CHK'D: WDU	DATE: Nov/11/1978
ENG'R: TWS	SHEET #: 1 OF 1	
PRJ. ENG'R:	PRJ. MANG'R:	
DRAWING NO: A780316	REV: 4	

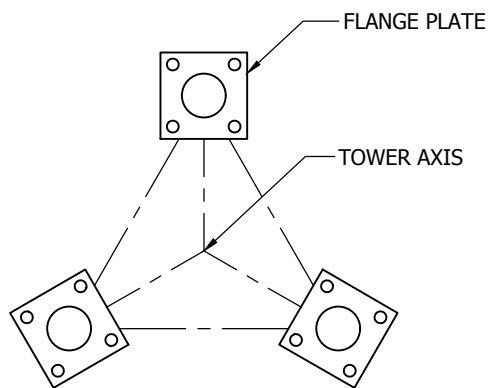


ELEVATION VIEW

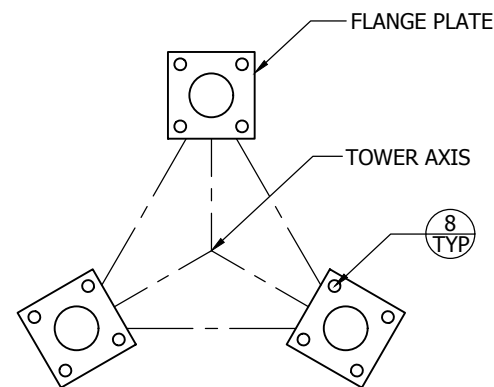
SECTION ASSEMBLY P/N: 8N				
BILL OF MATERIAL				
ITEM	PART NO.	QTY	DESCRIPTION	
1	VL349	2	LEG SSV 8N 2.5STD 20' 5 5	[PIPE 64mm STD]
2	VL349S	1	LEG SSV 8N 2.5STD 20' 5 5	[PIPE 64mm STD]
3	N81	6	BRACE DS SS8T L1.5X.13X7.95'	[L 38x38x3]
4	N82	6	BRACE DS SS8T L1.5X.13X8.36'	[L 38x38x3]
5	N83	6	BRACE DS SS8T L1.5X.13X8.79'	[L 38x38x3]
6	N84	6	BRACE DS SS8T L1.5X.13X9.11'	[L 38x38x3]
7	210017GA	60	BOLT ASSY 1/2 X 1-1/4 HSB A325	[M13x32]
8	210033GA	12	BOLT ASSY 5/8 X 2-1/2 HSB A325	[M16x64]
9	5/8STEP	16	BOLT ASSY STEP 5/8X7 W/DBN	[M16x178]

GENERAL NOTES:

1. LEG PART NUMBER IS STAMPED AT THE BOTTOM OF EACH LEG AND MUST BE LOCATED AT THE BOTTOM OF THE SECTION FOR PROPER ASSEMBLY.
2. STEP BOLTS ARE PROVIDED ON 1 LEG ONLY.
3. FLANGE BOLTS ARE FOR FLANGE PLATES AT THE BOTTOM OF THE SECTION.
4. DRAWING IS N.T.S. AND IS FOR ASSEMBLY PURPOSES ONLY.
5. NOMINAL METRIC EQUIVALENTS ARE GIVEN FOR REFERENCE ONLY AND SHALL NOT BE SUBSTITUTED FOR THE DESCRIBED SIZES UNLESS OTHERWISE APPROVED BY ROHN PRODUCTS.



VIEW A-A



VIEW B-B

FLANGE	OFFSET	BEVEL	FLANGE PLATE (P/N)	SPREAD
TOP	N/A	N/A	5" X 5" X 3/4" (P/N: 5C)	6'-6 3/4" [2000mm]
BOTTOM	N/A	N/A	5" X 5" X 3/4" (P/N: 5C)	8'-6 3/4" [2610mm]

FILE NO.

REVISIONS				
REV	DESCRIPTION	DWN	CHK	APP
3	REDRAWN	JHY	JDM	HA
DATE: Aug/9/2012				



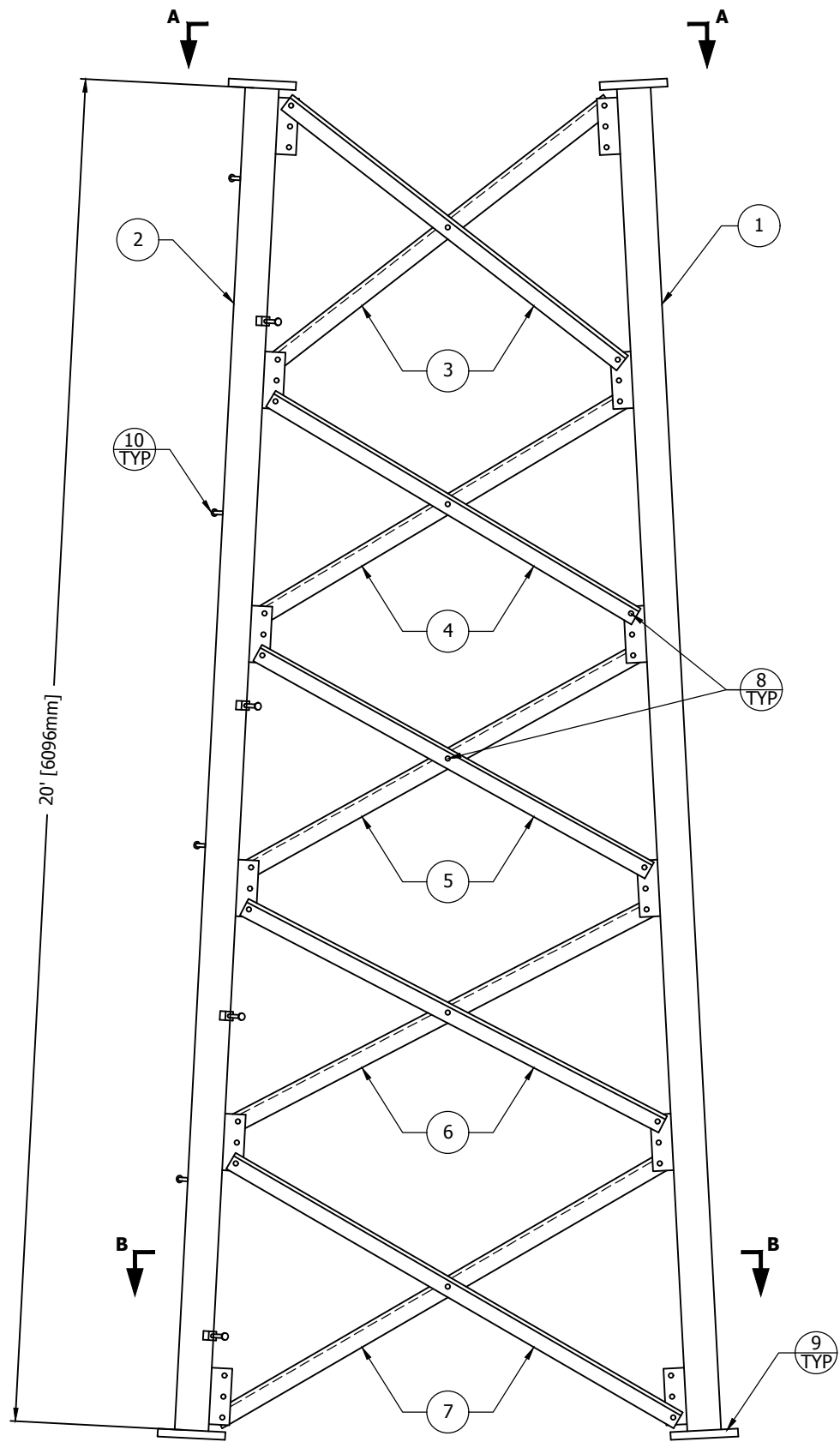
PO BOX 5999
PEORIA, IL 61601-5999
TOLL FREE 800-727-ROHN

THIS DRAWING IS THE PROPERTY OF ROHN. IT IS NOT TO BE REPRODUCED, COPIED OR TRACED IN WHOLE OR IN PART WITHOUT OUR WRITTEN CONSENT.

**SECTION ASSEMBLY
DETAILS FOR SSV 8N**

DWN: AED	CHK'D: MDI	DATE: Oct/28/1978
ENG'R: TWS	SHEET #: 1 OF 1	
PRJ. ENG'R:	PRJ. MANG'R:	

DRAWING NO: A780252 REV: 3

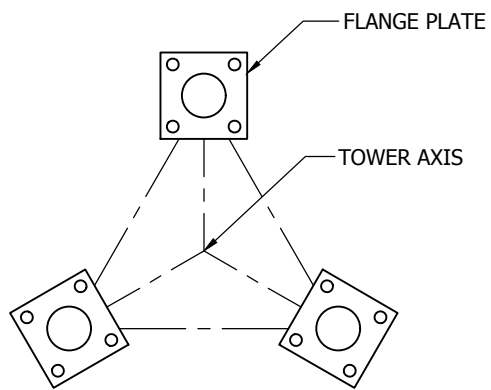


ELEVATION VIEW

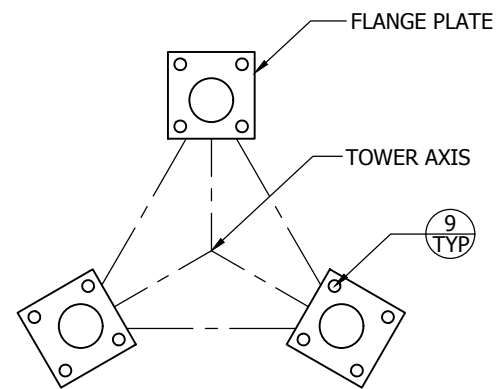
SECTION ASSEMBLY P/N: 7N				
BILL OF MATERIAL				
ITEM	PART NO.	QTY	DESCRIPTION	
1	VL348	2	LEG SSV 6-7N 2STD 20' 5 5OFF	[PIPE 51mm STD]
2	VL348S	1	LEG SSV 6-7N 2STD 20' 5 5OFF	[PIPE 51mm STD]
3	N71	6	BRACE DS SS7T L1.5X.13X5.71'	[L 38x38x3]
4	N72	6	BRACE DS SS7T L1.5X.13X6.03'	[L 38x38x3]
5	N73	6	BRACE DS SS7T L1.5X.13X6.35'	[L 38x38x3]
6	N74	6	BRACE DS SS7T L1.5X.13X6.69'	[L 38x38x3]
7	N75	6	BRACE DS SS7T L1.5X.13X6.92'	[L 38x38x3]
8	210017GA	75	BOLT ASSY 1/2 X 1-1/4 HSB A325	[M13x32]
9	210033GA	12	BOLT ASSY 5/8 X 2-1/2 HSB A325	[M16x64]
10	5/8STEP	16	BOLT ASSY STEP 5/8X7 W/DBN	[M16x178]

GENERAL NOTES:

- LEG PART NUMBER IS STAMPED AT THE BOTTOM OF EACH LEG AND MUST BE LOCATED AT THE BOTTOM OF THE SECTION FOR PROPER ASSEMBLY.
- STEP BOLTS ARE PROVIDED ON 1 LEG ONLY.
- FLANGE BOLTS ARE FOR FLANGE PLATES AT THE BOTTOM OF THE SECTION.
- DRAWING IS N.T.S. AND IS FOR ASSEMBLY PURPOSES ONLY.
- NOMINAL METRIC EQUIVALENTS ARE GIVEN FOR REFERENCE ONLY AND SHALL NOT BE SUBSTITUTED FOR THE DESCRIBED SIZES UNLESS OTHERWISE APPROVED BY ROHN PRODUCTS.



VIEW A-A



VIEW B-B

FLANGE	OFFSET	BEVEL	FLANGE PLATE (P/N)	SPREAD
TOP	N/A	N/A	5" X 5" X 3/4" (P/N: 5A)	4'-6 1/4" [1378mm]
BOTTOM	1/4" [6mm]	N/A	5" X 5" X 3/4" (P/N: 5B)	6'-6 3/4" [2000mm]

FILE NO.

REVISIONS				
REV	DESCRIPTION	DWN	CHK	APP
3	REDRAWN	JHY	JDM	HA
DATE: Aug/9/2012				

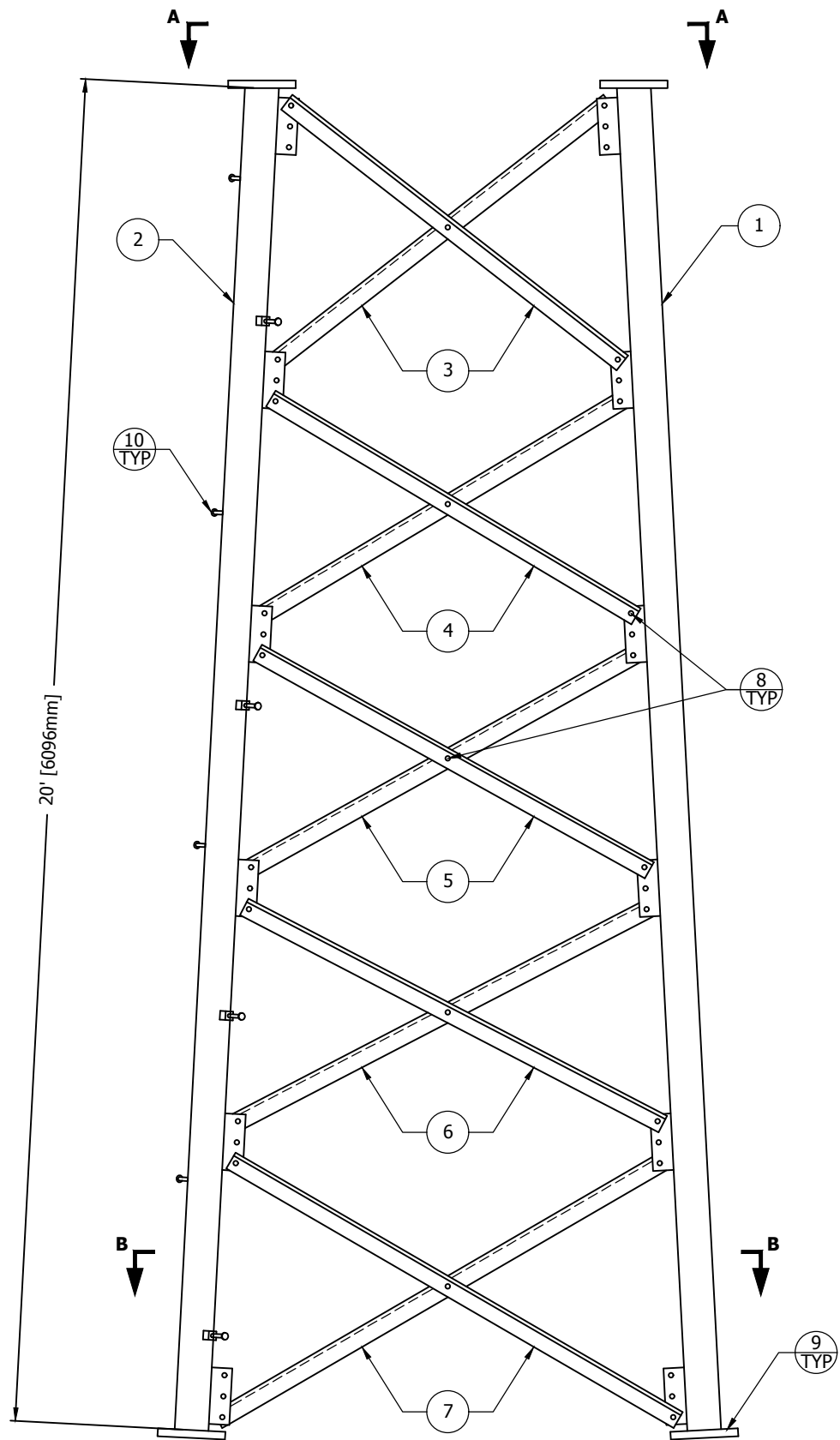


PO BOX 5999
PEORIA, IL 61601-5999
TOLL FREE 800-727-ROHN

THIS DRAWING IS THE PROPERTY OF ROHN. IT IS NOT TO BE REPRODUCED, COPIED OR TRACED IN WHOLE OR IN PART WITHOUT OUR WRITTEN CONSENT.

**SECTION ASSEMBLY
DETAILS FOR SSV 7N**

DWN: AED	CHK'D: MWD	DATE: Sep/9/1978
ENG'R: T.S	SHEET #: 1 OF 1	
PRJ. ENG'R:	PRJ. MANG'R:	
DRAWING NO: A780139	REV: 3	

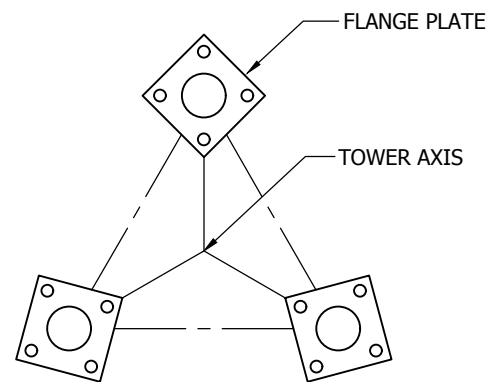


ELEVATION VIEW

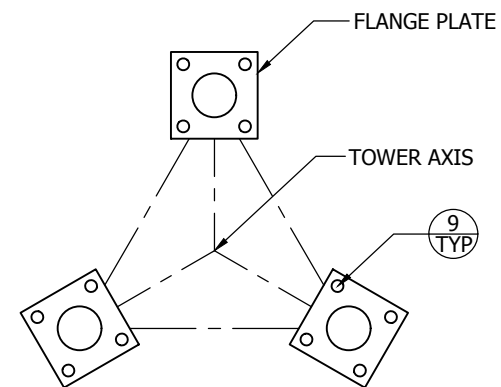
SECTION ASSEMBLY P/N: 6N				
BILL OF MATERIAL				
ITEM	PART NO.	QTY	DESCRIPTION	
1	VL347	2	LEG SSV 6N 2STD 20' 45BEV 5	[PIPE 51mm STD]
2	VL347S	1	LEG SSV 6N 2STD 20' 45BEV 5	[PIPE 51mm STD]
3	N61	6	BRACE DS SS6T L1.5X.13X4.39'	[L 38x38x3]
4	N62	6	BRACE DS SS6T L1.5X.13X4.61'	[L 38x38x3]
5	N63	6	BRACE DS SS6T L1.5X.13X4.86'	[L 38x38x3]
6	N64	6	BRACE DS SS6T L1.5X.13X5.14'	[L 38x38x3]
7	N65	6	BRACE DS SS6T L1.5X.13X5.28'	[L 38x38x3]
8	210017GA	75	BOLT ASSY 1/2 X 1-1/4 HSB A325	[M13x32]
9	210033GA	12	BOLT ASSY 5/8 X 2-1/2 HSB A325	[M16x64]
10	5/8STEP	16	BOLT ASSY STEP 5/8X7 W/DBN	[M16x178]

GENERAL NOTES:

- LEG PART NUMBER IS STAMPED AT THE BOTTOM OF EACH LEG AND MUST BE LOCATED AT THE BOTTOM OF THE SECTION FOR PROPER ASSEMBLY.
- STEP BOLTS ARE PROVIDED ON 1 LEG ONLY.
- FLANGE BOLTS ARE FOR FLANGE PLATES AT THE BOTTOM OF THE SECTION.
- DRAWING IS N.T.S. AND IS FOR ASSEMBLY PURPOSES ONLY.
- NOMINAL METRIC EQUIVALENTS ARE GIVEN FOR REFERENCE ONLY AND SHALL NOT BE SUBSTITUTED FOR THE DESCRIBED SIZES UNLESS OTHERWISE APPROVED BY ROHN PRODUCTS.



VIEW A-A



VIEW B-B

FLANGE	OFFSET	BEVEL	FLANGE PLATE (P/N)	SPREAD
TOP	N/A	3 1/3° REV	4 1/2" X 4 1/2" X 5/8" (P/N: VL906)	2'-6" [762mm]
BOTTOM	N/A	N/A	5" X 5" X 3/4" (P/N: 5A)	4'-6 1/4" [1378mm]

FILE NO.

REVISIONS				
REV	DESCRIPTION	DWN	CHK	APP
6	REDRAWN	JHY	JDM	HA
DATE: Aug/9/2012				



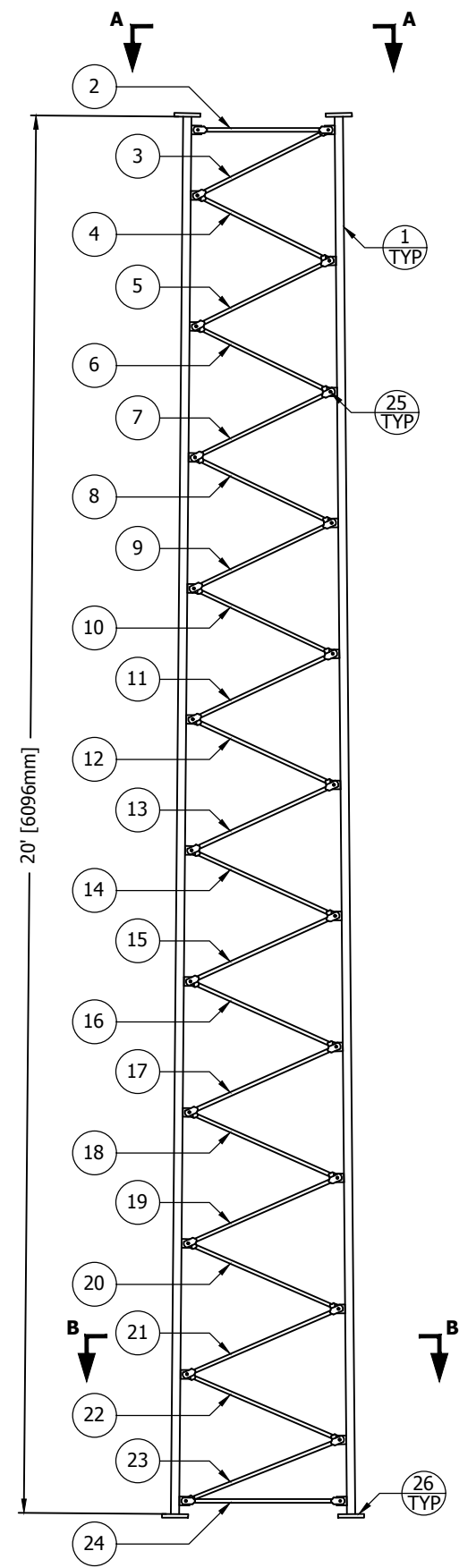
PO BOX 5999
PEORIA, IL 61601-5999
TOLL FREE 800-727-ROHN

THIS DRAWING IS THE PROPERTY OF ROHN. IT IS NOT TO BE REPRODUCED, COPIED OR TRACED IN WHOLE OR IN PART WITHOUT OUR WRITTEN CONSENT.

**SECTION ASSEMBLY
DETAILS FOR SSV 6N**

DWN: AED	CHK'D: WDU	DATE: Oct/18/1978
ENG'R: TWS	SHEET #: 1 OF 1	
PRJ. ENG'R:	PRJ. MANG'R:	

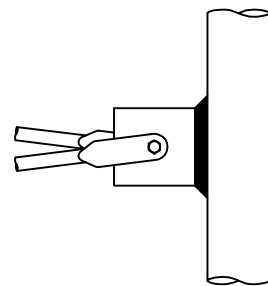
DRAWING NO: **A780200** REV: **6**



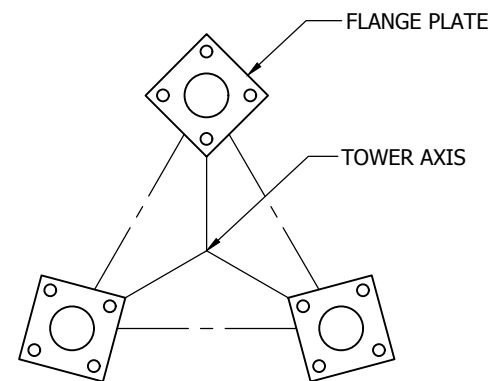
ELEVATION VIEW

GENERAL NOTES:

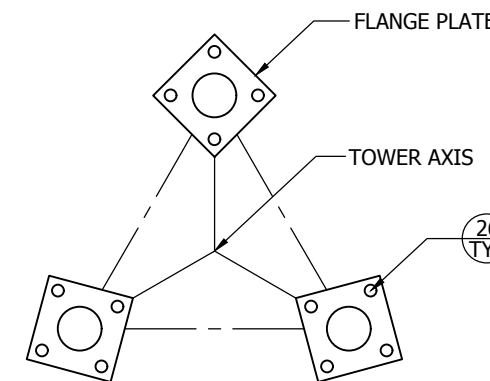
1. LEG PART NUMBER IS STAMPED AT THE BOTTOM OF EACH LEG AND MUST BE LOCATED AT THE BOTTOM OF THE SECTION FOR PROPER ASSEMBLY.
2. FLANGE BOLTS ARE FOR FLANGE PLATES AT THE BOTTOM OF THE SECTION.
3. DRAWING IS N.T.S. AND IS FOR ASSEMBLY PURPOSES ONLY.
4. NOMINAL METRIC EQUIVALENTS ARE GIVEN FOR REFERENCE ONLY AND SHALL NOT BE SUBSTITUTED FOR THE DESCRIBED SIZES UNLESS OTHERWISE APPROVED BY ROHN PRODUCTS.



BRACING DETAIL



VIEW A-A



VIEW B-B

SECTION ASSEMBLY P/N: 5N				
BILL OF MATERIAL				
ITEM	PART NO.	QTY	DESCRIPTION	
1	VL341	3	LEG SSV 5N/5NST 1.44SR 20' 45	[BAR RND 37mm SR]
2	N45	3	BRACE DIAG SSV RD BAR .63X1.98	[BAR RND 16mm]
3	N51	3	BRACE DIAG SSV RD BAR .63X2.18	[BAR RND 16mm]
4	N52	3	BRACE DIAG SSV RD BAR .63X2.22	[BAR RND 16mm]
5	N53	3	BRACE DIAG SSV RD BAR .63X2.23	[BAR RND 16mm]
6	N54	3	BRACE DIAG SSV RD BAR .63X2.25	[BAR RND 16mm]
7	N55	3	BRACE DIAG SSV RD BAR .63X2.26	[BAR RND 16mm]
8	N56	3	BRACE DIAG SSV RD BAR .63X2.28	[BAR RND 16mm]
9	N57	3	BRACE DIAG SSV RD BAR .63X2.29	[BAR RND 16mm]
10	N58	3	BRACE DIAG SSV RD BAR .63X2.30	[BAR RND 16mm]
11	N59	3	BRACE DIAG SSV RD BAR .63X2.31	[BAR RND 16mm]
12	N510	3	BRACE DIAG SSV RD BAR .63X2.33	[BAR RND 16mm]
13	N511	3	BRACE DIAG SSV RD BAR .63X2.34	[BAR RND 16mm]
14	N512	3	BRACE DIAG SSV RD BAR .63X2.36	[BAR RND 16mm]
15	N513	3	BRACE DIAG SSV RD BAR .63X2.38	[BAR RND 16mm]
16	N514	3	BRACE DIAG SSV RD BAR .63X2.39	[BAR RND 16mm]
17	N515	3	BRACE DIAG SSV RD BAR .63X2.40	[BAR RND 16mm]
18	N516	3	BRACE DIAG SSV RD BAR .63X2.42	[BAR RND 16mm]
19	N517	3	BRACE DIAG SSV RD BAR .63X2.43	[BAR RND 16mm]
20	N518	3	BRACE DIAG SSV RD BAR .63X2.45	[BAR RND 16mm]
21	N519	3	BRACE DIAG SSV RD BAR .63X2.46	[BAR RND 16mm]
22	N520	3	BRACE DIAG SSV RD BAR .63X2.47	[BAR RND 16mm]
23	N521	3	BRACE DIAG SSV RD BAR .63X2.49	[BAR RND 16mm]
24	N58	3	BRACE DIAG SSV RD BAR .63X2.30	[BAR RND 16mm]
25	210008GA	72	BOLT ASSY 3/8 X 1-1/2 HCS G5	[M10x38]
26	210032GA	12	BOLT ASSY 5/8 X 2-1/4 HSB A325	[M16x57]

FLANGE	OFFSET	BEVEL	FLANGE PLATE (P/N)	SPREAD
TOP	N/A	N/A	4 1/2" X 4 1/2" X 5/8" (P/N: VL901)	2'-2" [660mm]
BOTTOM	N/A	N/A	4 1/2" X 4 1/2" X 5/8" (P/N: VL901)	2'-6" [762mm]

FILE NO.				
REVISIONS				
REV	DESCRIPTION	DWN	CHK	APP
5	REDRAWN	JHY	JDM	HA
DATE: Aug/9/2012				

ROHN
PRODUCTS

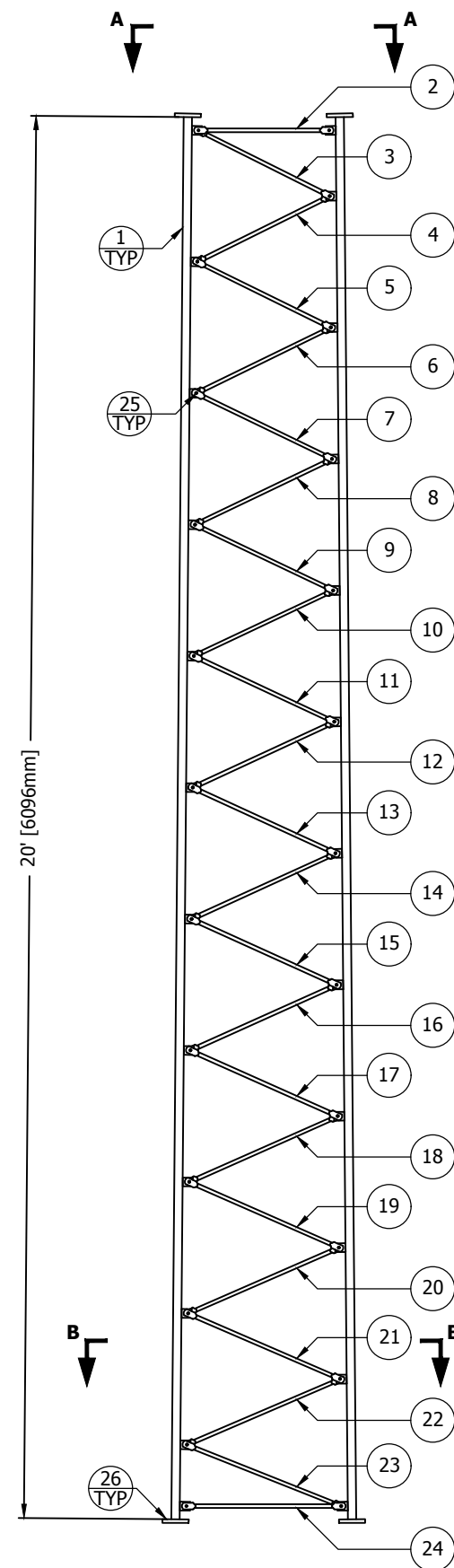
PO BOX 5999
PEORIA, IL 61601-5999
TOLL FREE 800-727-ROHN

THIS DRAWING IS THE PROPERTY OF ROHN. IT IS NOT TO BE REPRODUCED, COPIED OR TRACED IN WHOLE OR IN PART WITHOUT OUR WRITTEN CONSENT.

**SECTION ASSEMBLY
DETAILS FOR SSV 5N**

DWN: AED	CHK'D: JD	DATE: Mar/22/1979
ENG'R: TWS	SHEET #: 1 OF 1	
PRJ. ENG'R:	PRJ. MANG'R:	

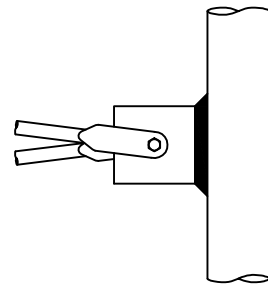
DRAWING NO: A790119	REV: 5
------------------------	-----------



ELEVATION VIEW

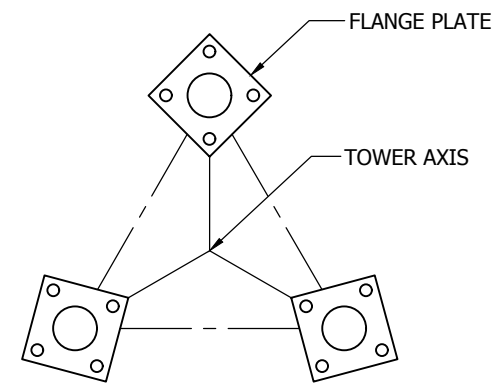
GENERAL NOTES:

1. LEG PART NUMBER IS STAMPED AT THE BOTTOM OF EACH LEG AND MUST BE LOCATED AT THE BOTTOM OF THE SECTION FOR PROPER ASSEMBLY.
2. FLANGE BOLTS ARE FOR FLANGE PLATES AT THE BOTTOM OF THE SECTION.
3. DRAWING IS N.T.S. AND IS FOR ASSEMBLY PURPOSES ONLY.
4. NOMINAL METRIC EQUIVALENTS ARE GIVEN FOR REFERENCE ONLY AND SHALL NOT BE SUBSTITUTED FOR THE DESCRIBED SIZES UNLESS OTHERWISE APPROVED BY ROHN PRODUCTS.

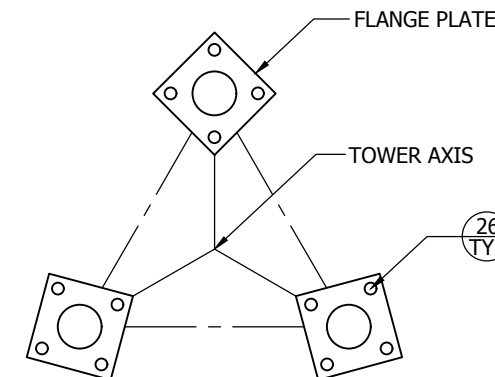


BRACING DETAIL

SECTION ASSEMBLY P/N: 4N					
BILL OF MATERIAL					
ITEM	PART NO.	QTY	DESCRIPTION		
1	VL345	3	LEG SSV 4N 1.25SR 20' 4 45	[BAR RND 32mm SR]	
2	N4T	3	BRACE H SSV RD BAR .63X1.66'	[BAR RND 16mm]	
3	N41	3	BRACE DIAG SSV RD BAR .63X1.90	[BAR RND 16mm]	
4	N42	3	BRACE DIAG SSV RD BAR .63X1.94	[BAR RND 16mm]	
5	N43	3	BRACE DIAG SSV RD BAR .63X1.95	[BAR RND 16mm]	
6	N44	3	BRACE DIAG SSV RD BAR .63X1.97	[BAR RND 16mm]	
7	N45	3	BRACE DIAG SSV RD BAR .63X1.98	[BAR RND 16mm]	
8	N46	3	BRACE DIAG SSV RD BAR .63X1.99	[BAR RND 16mm]	
9	N47	3	BRACE DIAG SSV RD BAR .63X2.01	[BAR RND 16mm]	
10	N48	3	BRACE DIAG SSV RD BAR .63X2.02	[BAR RND 16mm]	
11	N49	3	BRACE DIAG SSV RD BAR .63X2.04	[BAR RND 16mm]	
12	N410	3	BRACE DIAG SSV RD BAR .63X2.05	[BAR RND 16mm]	
13	N411	3	BRACE DIAG SSV RD BAR .63X2.06	[BAR RND 16mm]	
14	N412	3	BRACE DIAG SSV RD BAR .63X2.08	[BAR RND 16mm]	
15	N413	3	BRACE DIAG SSV RD BAR .63X2.09	[BAR RND 16mm]	
16	N414	3	BRACE DIAG SSV RD BAR .63X2.10	[BAR RND 16mm]	
17	N415	3	BRACE DIAG SSV RD BAR .63X2.12	[BAR RND 16mm]	
18	N416	3	BRACE DIAG SSV RD BAR .63X2.13	[BAR RND 16mm]	
19	N417	3	BRACE DIAG SSV RD BAR .63X2.15	[BAR RND 16mm]	
20	N418	3	BRACE DIAG SSV RD BAR .63X2.16	[BAR RND 16mm]	
21	N419	3	BRACE DIAG SSV RD BAR .63X2.17	[BAR RND 16mm]	
22	N420	3	BRACE DIAG SSV RD BAR .63X2.19	[BAR RND 16mm]	
23	N421	3	BRACE DIAG SSV RD BAR .63X2.20	[BAR RND 16mm]	
24	N4B	3	BRACE H SSV RD BAR .63X1.99'	[BAR RND 16mm]	
25	210008GA	72	BOLT ASSY 3/8 X 1-1/2 HCS G5	[M10x38]	
26	210032GA	12	BOLT ASSY 5/8 X 2-1/4 HSB A325	[M16x57]	



VIEW A-A



VIEW B-B

FLANGE	OFFSET	BEVEL	FLANGE PLATE (P/N)	SPREAD
TOP	N/A	N/A	4" X 4" X 1/2" (P/N: 4A)	1'-10" [559mm]
BOTTOM	N/A	N/A	4 1/2" X 4 1/2" X 5/8" (P/N: 45A)	2'-2" [660mm]

FILE NO.				
REVISIONS				
REV	DESCRIPTION	DWN	CHK	APP
4	REDRAWN DATE: Aug/9/2012	JHY	JDM	HA



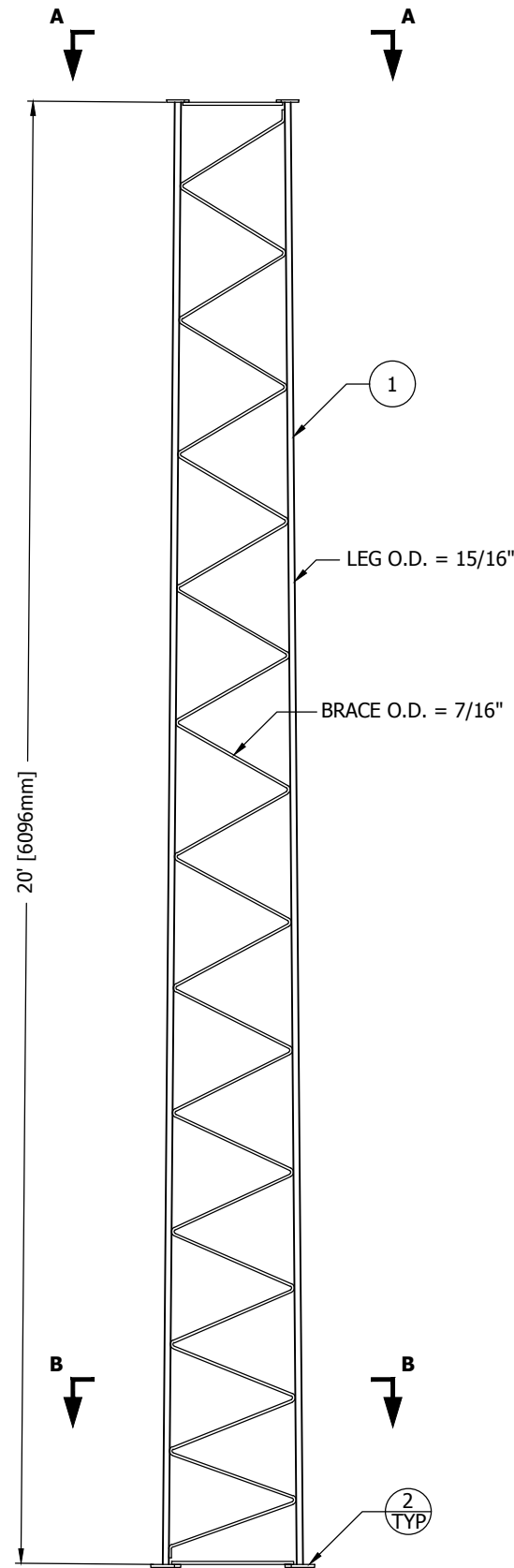
PO BOX 5999
PEORIA, IL 61601-5999
TOLL FREE 800-727-ROHN

THIS DRAWING IS THE PROPERTY OF ROHN. IT IS NOT TO BE REPRODUCED, COPIED OR TRACED IN WHOLE OR IN PART WITHOUT OUR WRITTEN CONSENT.

**SECTION ASSEMBLY
DETAILS FOR SSV 4N**

DWN:	CHK'D:	DATE:
AED	RAM	Mar/17/1979
ENG'R:	SHEET #:	
TWS	1 OF 1	
PRJ. ENG'R:	PRJ. MANG'R:	

DRAWING NO:	REV:
A790110	4

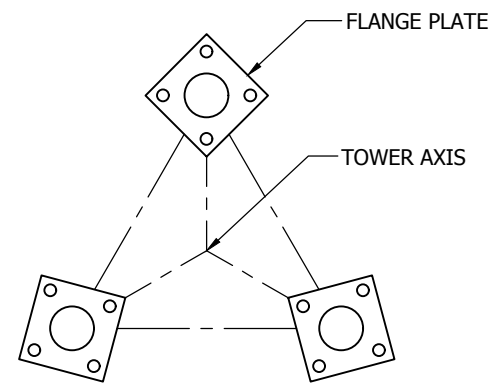


ELEVATION VIEW

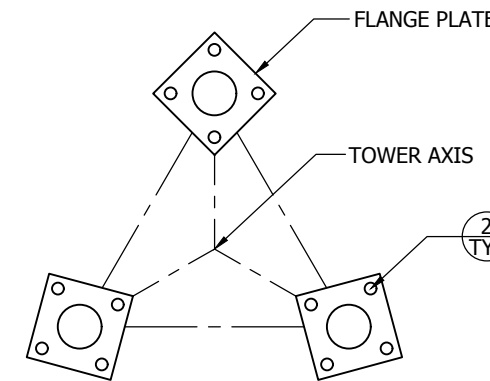
SECTION ASSEMBLY P/N: 3WN				
BILL OF MATERIAL				
ITEM	PART NO.	QTY	DESCRIPTION	
1	VS3	1	SECTION 20' 3WN WELDED HDG	
2	210020GA	12	BOLT ASSY 1/2 X 2 HSB A325	[M13x51]

GENERAL NOTES:

1. LEG PART NUMBER IS STAMPED AT THE BOTTOM OF EACH LEG AND MUST BE LOCATED AT THE BOTTOM OF THE SECTION FOR PROPER ASSEMBLY.
2. FLANGE BOLTS ARE FOR FLANGE PLATES AT THE BOTTOM OF THE SECTION.
3. DRAWING IS N.T.S. AND IS FOR ASSEMBLY PURPOSES ONLY.
4. NOMINAL METRIC EQUIVALENTS ARE GIVEN FOR REFERENCE ONLY AND SHALL NOT BE SUBSTITUTED FOR THE DESCRIBED SIZES UNLESS OTHERWISE APPROVED BY ROHN PRODUCTS.



VIEW A-A



VIEW B-B

FLANGE	OFFSET	BEVEL	FLANGE PLATE (P/N)	SPREAD
TOP	N/A	1/2° REV	3" X 3" X 3/8" (P/N: 3A)	1'-6" [457mm]
BOTTOM	N/A	1/2° STD	4" X 4" X 1/2" (P/N: 4C)	1'10" [559mm]

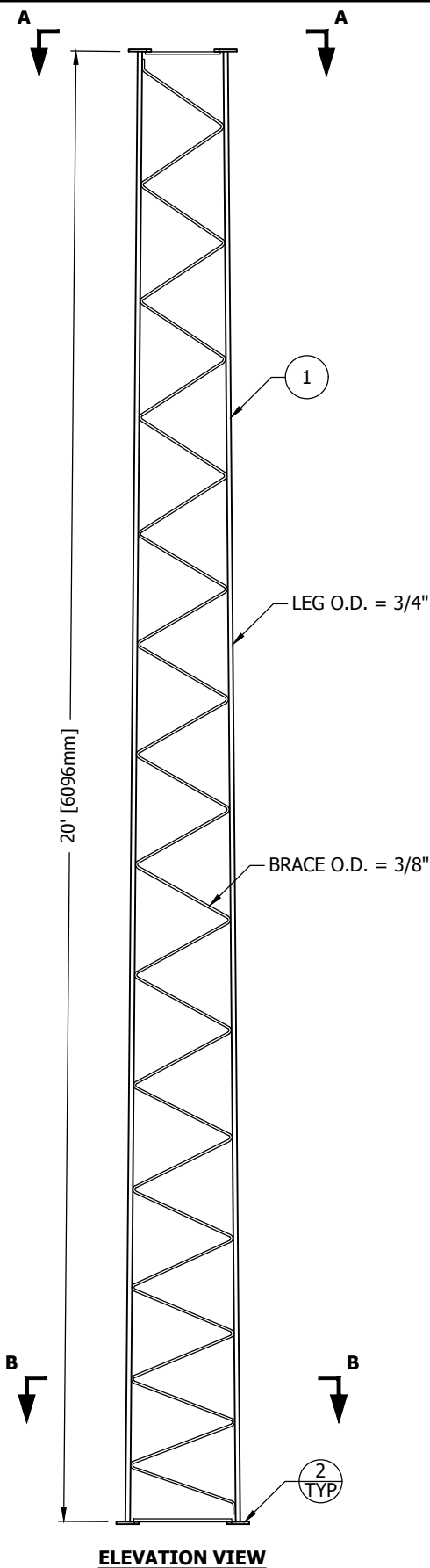
REVISIONS				
REV	DESCRIPTION	DWN	CHK	APP
6	REDRAWN	JHY	JDM	HA
DATE: Oct/30/2012				

ROHN
PRODUCTS
PO BOX 5999
PEORIA, IL 61601-5999
TOLL FREE 800-727-ROHN

THIS DRAWING IS THE PROPERTY OF ROHN. IT IS NOT TO BE REPRODUCED, COPIED OR TRACED IN WHOLE OR IN PART WITHOUT OUR WRITTEN CONSENT.

**SECTION ASSEMBLY
DETAILS FOR SSV 3WN**

DWN: AED	CHK'D: RAM	DATE: Mar/14/1979
ENG'R: TWS	SHEET #: 1 OF 1	
PRJ. ENG'R:	PRJ. MANG'R:	
DRAWING NO: A790097	REV: 6	

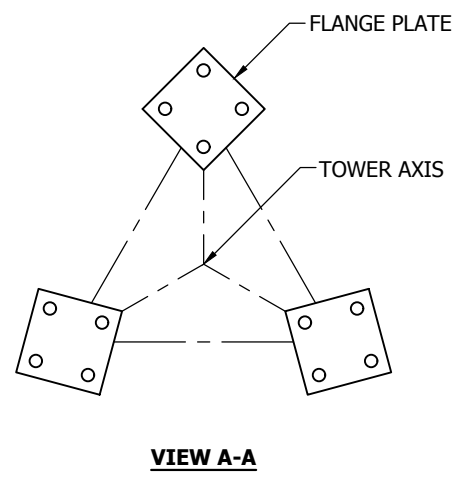


ELEVATION VIEW

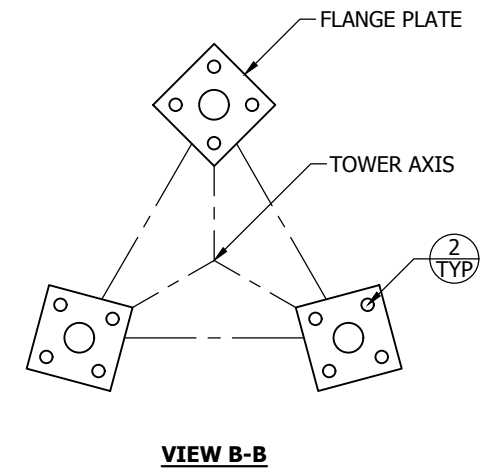
FLANGE	OFFSET	BEVEL	FLANGE PLATE (P/N)	SPREAD
TOP	N/A	N/A	3" X 3" X 3/8" (P/N: 3A)	1'-2" [356mm]
BOTTOM	N/A	N/A	3" X 3" X 3/8" (P/N: 3A)	1'-6" [457mm]

SECTION ASSEMBLY P/N: 2W				
BILL OF MATERIAL				
ITEM	PART NO.	QTY	DESCRIPTION	
1	VS2	1	SECTION 20' 2W WELDED HDG	
2	210008GA	12	BOLT ASSY 3/8 X 1-1/2 HCS G5	[M10x38]

- GENERAL NOTES:**
1. LEG PART NUMBER IS STAMPED AT THE BOTTOM OF EACH LEG AND MUST BE LOCATED AT THE BOTTOM OF THE SECTION FOR PROPER ASSEMBLY.
 2. FLANGE BOLTS ARE FOR FLANGE PLATES AT THE BOTTOM OF THE SECTION.
 3. DRAWING IS N.T.S. AND IS FOR ASSEMBLY PURPOSES ONLY.
 4. NOMINAL METRIC EQUIVALENTS ARE GIVEN FOR REFERENCE ONLY AND SHALL NOT BE SUBSTITUTED FOR THE DESCRIBED SIZES UNLESS OTHERWISE APPROVED BY ROHN PRODUCTS.



VIEW A-A



VIEW B-B

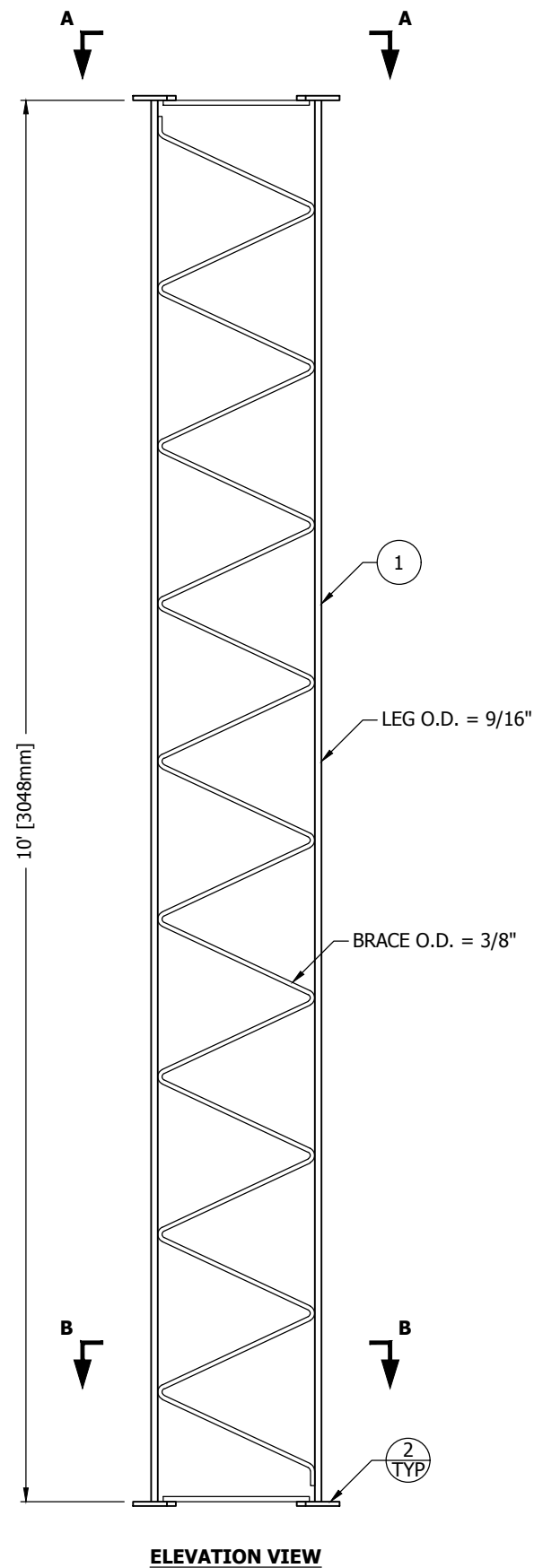
FILE NO.				
REVISIONS				
REV	DESCRIPTION	DWN	CHK	APP
6	REDRAWN	JHY	MDF	HA
DATE: 11/14/2012				

ROHN
PRODUCTS
PO BOX 5999
PEORIA, IL 61601-5999
TOLL FREE 800-727-ROHN

THIS DRAWING IS THE PROPERTY OF ROHN. IT IS NOT TO BE REPRODUCED, COPIED OR TRACED IN WHOLE OR IN PART WITHOUT OUR WRITTEN CONSENT.

**SECTION ASSEMBLY
DETAILS FOR SSV 2W**

DWN: AED	CHK'D: RAM	DATE: Mar/14/1979
ENG'R: TWS	SHEET #: 1 OF 1	
PRJ. ENG'R:	PRJ. MANG'R:	
DRAWING NO: A790091	REV: 6	

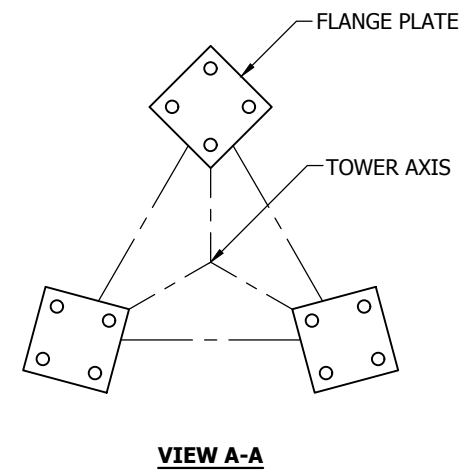


ELEVATION VIEW

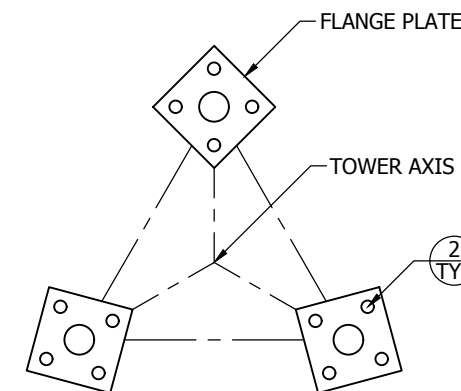
SECTION ASSEMBLY P/N: 1WB				
BILL OF MATERIAL				
ITEM	PART NO.	QTY	DESCRIPTION	
1	VS6	1	SECTION 10' 1WB WELDED	
2	210008GA	12	BOLT ASSY 3/8 X 1-1/2 HCS G5	[M10x38]

GENERAL NOTES:

1. LEG PART NUMBER IS STAMPED AT THE BOTTOM OF EACH LEG AND MUST BE LOCATED AT THE BOTTOM OF THE SECTION FOR PROPER ASSEMBLY.
2. FLANGE BOLTS ARE FOR FLANGE PLATES AT THE BOTTOM OF THE SECTION.
3. DRAWING IS N.T.S. AND IS FOR ASSEMBLY PURPOSES ONLY.
4. NOMINAL METRIC EQUIVALENTS ARE GIVEN FOR REFERENCE ONLY AND SHALL NOT BE SUBSTITUTED FOR THE DESCRIBED SIZES UNLESS OTHERWISE APPROVED BY ROHN PRODUCTS.



VIEW A-A



VIEW B-B

FLANGE	OFFSET	BEVEL	FLANGE PLATE (P/N)	SPREAD
TOP	N/A	N/A	3" X 3" X 3/8" (P/N: 3A)	1'-2" [356mm]
BOTTOM	N/A	N/A	3" X 3" X 3/8" (P/N: 3A)	1'-2" [356mm]

FILE NO.				
REVISIONS				
REV	DESCRIPTION	DWN	CHK	APP
3	REDRAWN	JHY	MDF	HA
DATE: 11/14/2012				



PO BOX 5999
PEORIA, IL 61601-5999
TOLL FREE 800-727-ROHN

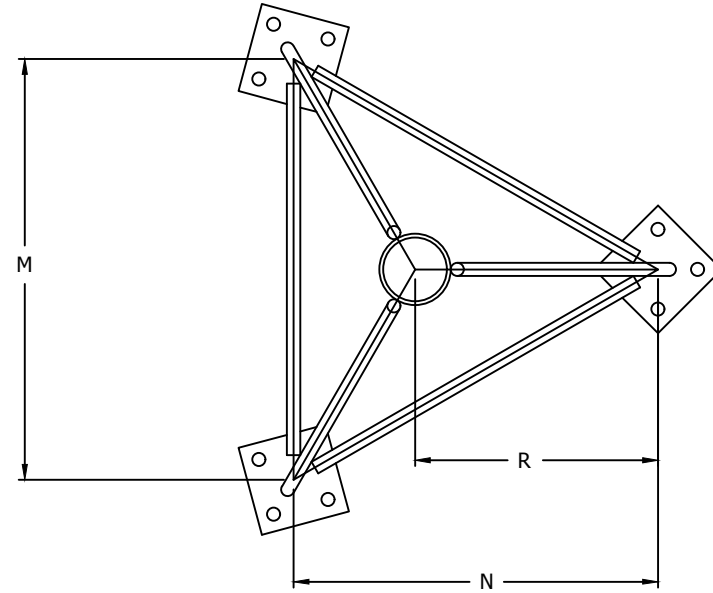
THIS DRAWING IS THE PROPERTY OF ROHN. IT IS NOT TO BE REPRODUCED, COPIED OR TRACED IN WHOLE OR IN PART WITHOUT OUR WRITTEN CONSENT.

**SECTION ASSEMBLY
DETAILS FOR SSV 1WB**

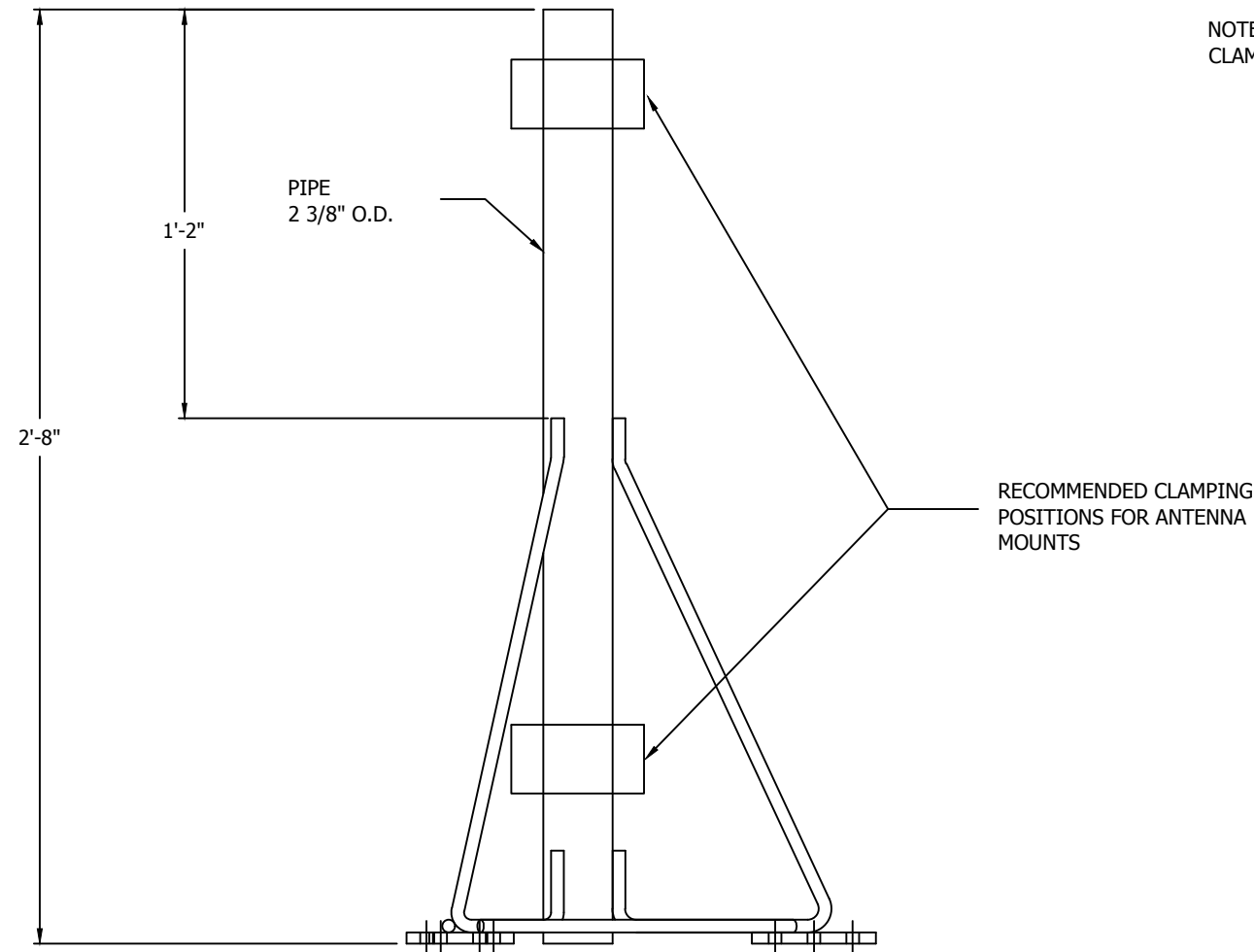
DWN: AED	CHK'D: RDM	DATE: Mar/14/1979
ENG'R: TWS	SHEET #: 1 OF 1	
PRJ. ENG'R:	PRJ. MANG'R:	
DRAWING NO: A790089	REV: 3	

TAPERED TOP ASSY BILL OF MATERIALS DETAIL

ASSY P/N	TOWER SEC.	M	N	R	FLANGE PLATE	FLANGE BOLTS		
	NUMBER				SIZE	QTY	SIZE	P/N
1TT	1W, 1WB, 2W	1'-2"	1'-0 1/8"	0'-8 1/16"	3 X 3 X 3/8	9	3/8 X 1-1/2	210008GA
3TT	2WST, 2WB, 3WN	1'-6"	1'-3 9/16"	0'-10 3/8"	3 X 3 X 3/8	9	3/8 X 1-1/2	210008GA
4TTN	3WNST, 3WNB, 4N	1'-10"	1'-7 1/16"	1'-0 11/16"	4 X 4 X 1/2	9	1/2 X 2	210020GA
5TTN	4NST, 4NA, 4WB, 4NC, 5N	2'-2"	1'-10 1/2"	1'-3"	4-1/2 X 4-1/2 X 5/8	9	5/8 X 2-1/4	210032GA
6TT	5NST, 5NA, 5NB, 5NC, 6N	2'-6"	2'-2"	1'-5 5/16"	4-1/2 X 4-1/2 X 5/8	9	5/8 X 2-1/4	210032GA



NOTE: DESIGN BASED ON THRUST OF 500# AT CLAMPING POSITIONS



FILE NO.

REVISIONS

REV	DESCRIPTION	DWN	CHK	APP
12	UPDATED TO NEW STANDARDS DATE: 07/29/11	JEC	KTL	DWG



PO BOX 5999
PEORIA, IL 61601-5999
TOLL FREE 800-727-ROHN

THIS DRAWING IS THE PROPERTY OF ROHN. IT IS NOT TO BE REPRODUCED, COPIED OR TRACED IN WHOLE OR IN PART WITHOUT OUR WRITTEN CONSENT.

TAPERED TOP ASSEMBLY

DWN: MDI	CHK'D: OH	DATE: JAN/03/1967
----------	-----------	-------------------

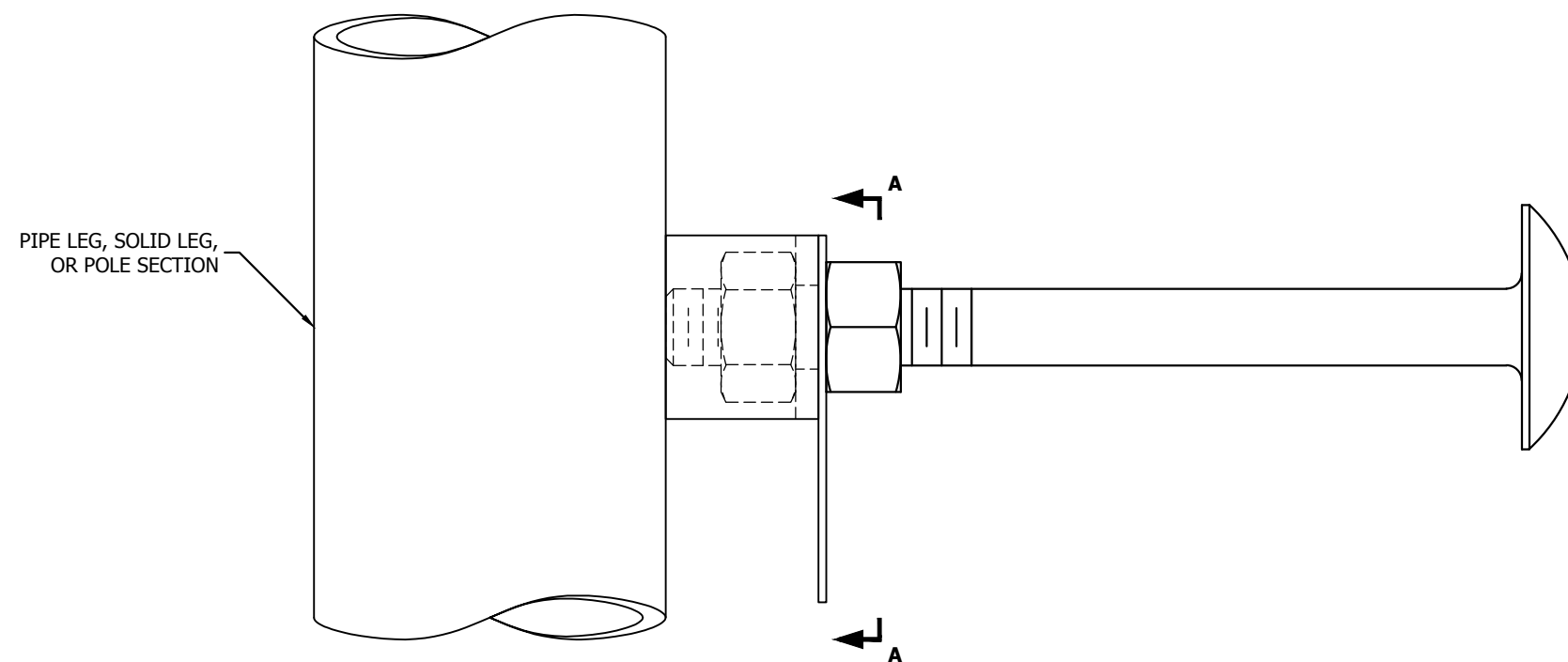
ENG'R: CW	SHEET #: 1 OF 1
-----------	-----------------

DRAWING NO: SK670407	REV: 12
----------------------	---------

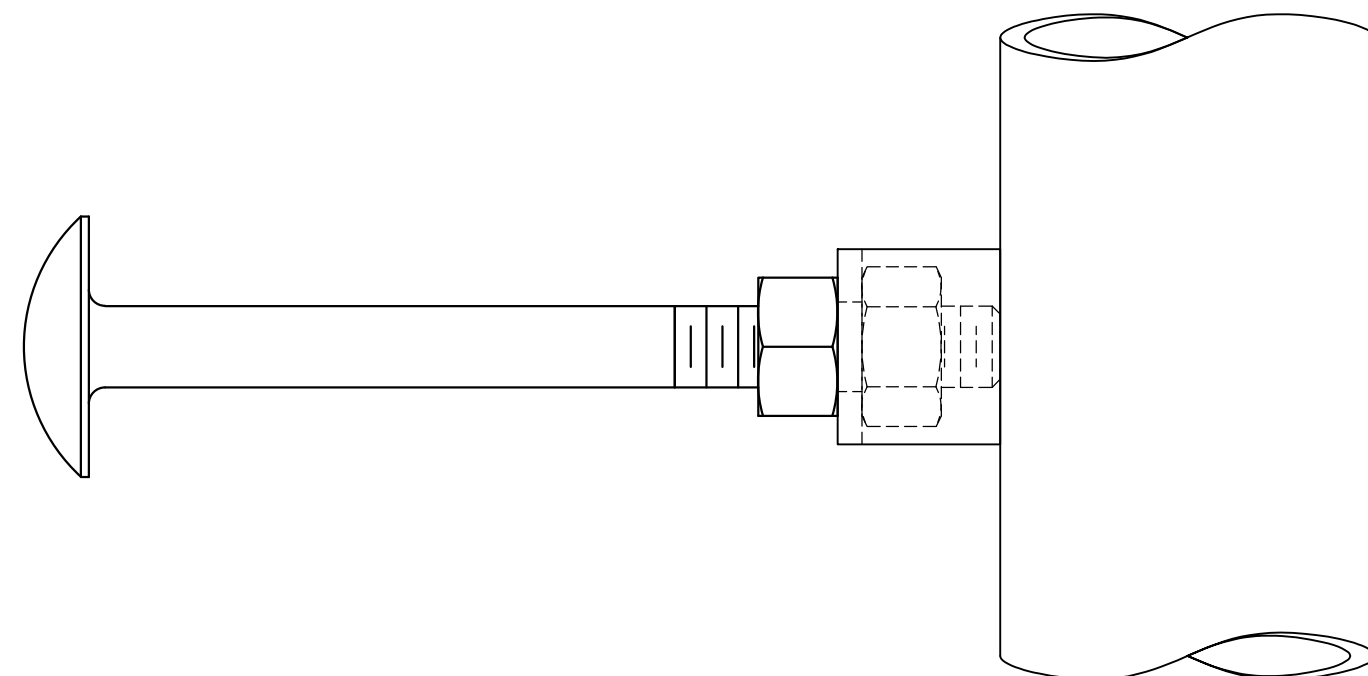
FILE NO.

REVISIONS

REV	DESCRIPTION	DWN	CHK	APP
6	UPDATED TITLE BLOCK DATE: 11/23/2015	JHY	JDM	HA

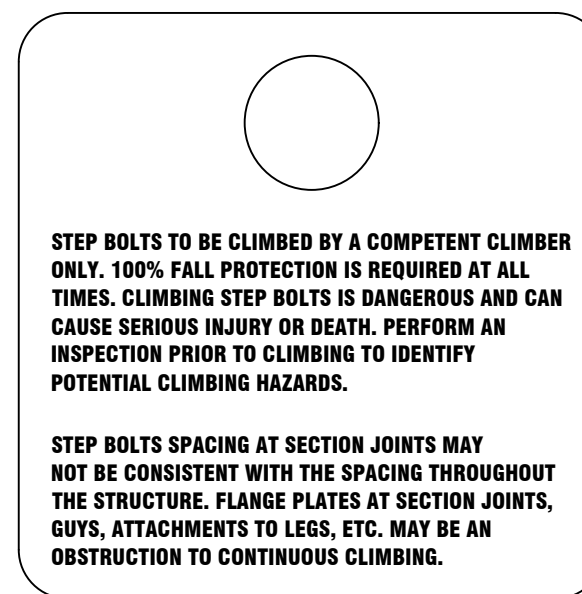


PIPE LEG, SOLID LEG,
OR POLE SECTION



NOTE:

1. STEP BOLTS MUST BE TURNED UNTIL THE FRONT EDGE OF THE BOLT TOUCHES THE SIDE OF THE STRUCTURE.
2. STEP BOLTS ARE SUPPLIED FOR CONSTRUCTION PURPOSES AND ARE NOT INTENDED FOR USE BY UNQUALIFIED PERSONNEL.
3. DEVIATION FROM PERFECT ALIGNMENT IS ACCEPTABLE. SOME SPACING INCONSISTENCY MAY EXIST AT SPLICE LOCATIONS.
4. IF STEP BOLTS ARE BELIEVED TO PRESENT SAFETY PROBLEMS TO PERSONNEL, DO NOT INSTALL THE STEP BOLTS.



VIEW A-A
STEP BOLT CLIMBING WARNING SIGN

(INSTALL WARNING SIGN IN BOTTOM 5' OF STRUCTURE)



PO BOX 5999
PEORIA, IL 61601-5999
TOLL FREE 800-727-ROHN

THIS DRAWING IS THE PROPERTY OF ROHN. IT IS NOT TO BE REPRODUCED, COPIED OR TRACED IN WHOLE OR IN PART WITHOUT OUR WRITTEN CONSENT.

STEP BOLT INSTALLATION DETAIL

DWN: OH	CHK'D: TWS	DATE: 04/16/1974
ENG'R: CW	SHEET #: 1 OF 1	
PRJ. ENG'R:	PRJ. MANG'R:	
DRAWING NO: B651264	REV: 6	

FILE NO.

REVISIONS

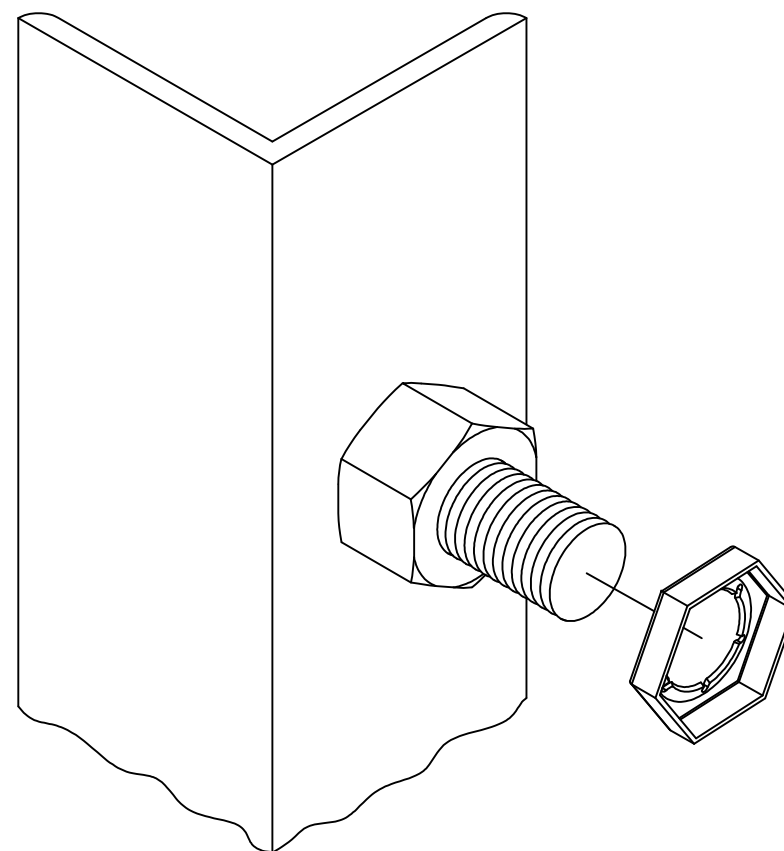
REV	DESCRIPTION	DWN	CHK	APP
7	CHANGE NOTATION. DATE: 01/11/12	JEC	JDM	HA

ASSEMBLY BOLT INSTALLATION

1. UNLESS OTHERWISE SPECIFIED, ASSEMBLY BOLTS AND ANCHOR BOLTS ARE TO BE TIGHTENED TO A SNUG TIGHT CONDITION (MEMBERS IN FIRM CONTACT) AND MUST INCLUDE A NUT LOCKING DEVICE. NO MINIMUM BOLT TENSION OR TORQUE VALUES ARE REQUIRED. WHEN LOCK WASHERS ARE PROVIDED AS A NUT LOCKING DEVICE, REPLACE ANY DAMAGED WASHERS DUE TO OVER TIGHTENING.
2. WASHERS ARE TO BE INSTALLED OVER SLOTTED HOLES.

PAL NUT INSTALLATION

1. PAL NUTS ARE TO BE INSTALLED AFTER NUTS ARE TIGHT AND WITH EDGE LIP OUT (SEE PICTURE). PAL NUTS ARE NOT REQUIRED WHEN SELF-LOCKING NUTS OR LOCK WASHERS ARE PROVIDED.



PO BOX 5999
PEORIA, IL 61601-5999
TOLL FREE 800-727-ROHN

THIS DRAWING IS THE PROPERTY OF ROHN. IT IS NOT TO BE REPRODUCED, COPIED OR TRACED IN WHOLE OR IN PART WITHOUT OUR WRITTEN CONSENT.

BOLT ASSEMBLY INSTALLATION

DWN:	OH	CHK'D:	GHB	DATE:	07/05/79	
ENG'R:	TWS	SHEET #:	1 OF 1			
DRAWING NO:	A790135				REV:	7