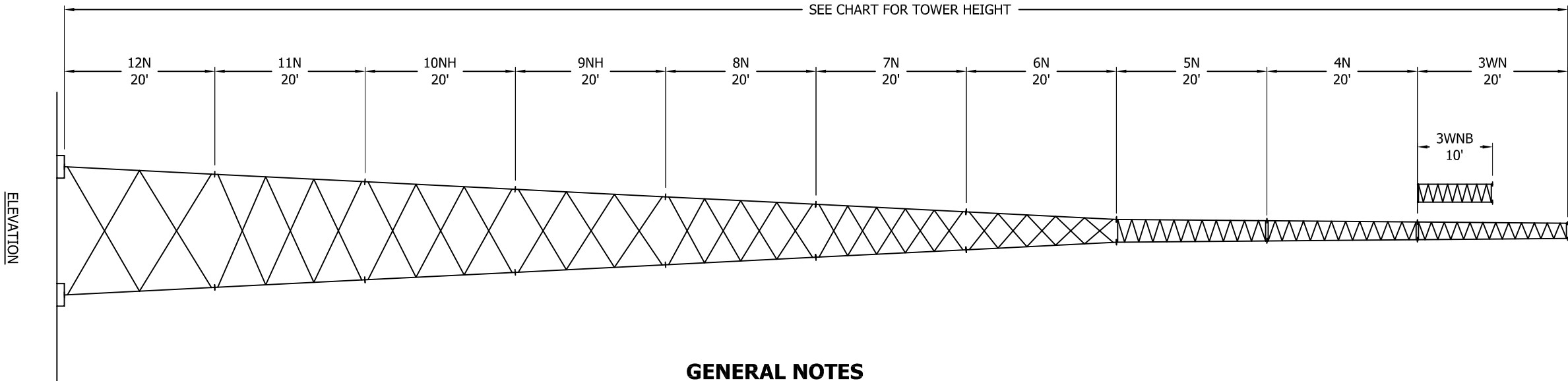


	A	B	C	D	E	F	G	H	I	J	K	L
1	TOWER ASSEMBLY NUMBER	TOWER HEIGHT (FT)	TOP	BASE SECTIONS					EFFECTIVE PROJECTED AREA (SQ. FT.)			
2				BASE	A-BOLTS 12 REQ'D	FACE SPREAD	ANCHOR BOLT CLUSTER TEMPLATE	ANCHOR BOLT FULL SIZE TEMPLATE	TOP		30' BELOW TOP	
3									EXP B	EXP C	EXP B	EXP C
4	SS040HD90	40	3WN	4N	SB4	2'-2"	-	-	41	29	60	40
5	SS050HD90	50	3WNB	5N	SB5	2'-6"	-	-	36	27	60	40
6	SS060HD90	60	3WN	5N	SB5	2'-6"	-	-	35	26	60	40
7	SS070HD90	70	3WNB	6N62	5/8X42	4'-6 1/4"	12A0452	12A0452FST	32	23	54	38
8	SS080HD90	80	3WN	6N62	5/8X42	4'-6 1/4"	12A0452	12A0452FST	22	15	37	25
9	SS090HD90	90	3WNB	7N165	5/8X42	6'-6 3/4"	12A0656	12A0656FST	27	18	46	30
10	SS100HD90	100	3WN	7N165	5/8X42	6'-6 3/4"	12A0656	12A0656FST	20	13	34	21
11	SS110HD90	110	3WNB	8N106	5/8X42	8'-6 3/4"	12A0856	12A0856FST	24	10	41	17
12	SS120HD90	120	3WN	8N106	5/8X42	8'-6 3/4"	12A0856	12A0856FST	18	11	31	18
13	SS130HD90	130	3WNB	9N82	5/8X42	10'-6 3/4"	12A1056	12A1056FST	21	9	36	15
14	SS140HD90	140	3WN	9N82	5/8X42	10'-6 3/4	12A1056	12A1056FST	16	10	27	17
15	SS150HD90	150	3WNB	10N183	3/4X48	12'-7 1/4"	12B1260	12B1260FST	19	11	33	18
16	SS160HD90	160	3WN	10N183	3/4X48	12'-7 1/4"	12B1260	12B1260FST	15	8	25	14
17	SS170HD90	170	3WNB	11N332	7/8X60	14'-7 7/8"	12D1466	12D1466FST	18	9	31	15
18	SS180HD90	180	3WN	11N332	7/8X60	14'-7 7/8"	12D1466	12D1466FST	13	6	21	10
19	SS190HD90	190	3WNB	12N18	7/8X60	16'-8 3/8"	12D1670	12D1670FST	17	7	30	13



GENERAL NOTES

1. STANDARD TOWER DESIGNS ARE IN ACCORDANCE WITH APPROVED NATIONAL STANDARD ANSI/TIA-222-G, STRUCTURAL CLASS II, TOPOGRAPHIC CATEGORY 1, 3/4" DESIGN ICE THICKNESS, SEISMIC COEFFICIENT $S_s \leq 1.0$.

2. TOWER DESIGNS ASSUME ALLOWABLE EFFECTIVE PROJECTED AREAS ARE SYMMETRICALLY PLACED ON THE TOWER.

3. DESIGNS ASSUME ONE 7/8" LINE TO TOP AND TWO 7/8" LINES TO 30 FEET BELOW TOP, ONE LINE ON EACH FACE.

4. ALL TOWERS ARE PROVIDED WITH STEP BOLTS AND A TAPERED TOP.

5. GROUNDING KIT MUST BE ORDERED SEPARATELY.

6. ASSEMBLY DRAWINGS AND STANDARD FOUNDATION DETAILS ARE SUPPLIED WITH THE TOWER.

7. CUSTOM DESIGNS FOR SITE-SPECIFIC APPLICATIONS ARE AVAILABLE UPON REQUEST.

8. INSTALL WARNING PLATE (P/N ACWS) IN A HIGHLY VISIBLE LOCATION.
9. ALL ANTENNA INSTALLATIONS MUST BE GROUNDED IN ACCORDANCE WITH LOCAL AND NATIONAL CODES.

10. FOR ADDITIONAL BRACING, GROUTING AND DRAINAGE DETAILS SEE DRAWING SK720305

11. FOR TAPERED TOP DETAILS SEE DRAWING SK670407

12. ALL TOWERS WITH 3WN TOP SECTIONS PROVIDED WITH (P/N 3TT) TAPERED TOP.

13. ALL TOWERS WITH 3WNB TOP SECTION PROVIDED WITH (P/N 4TTN) TAPERED TOP.

14. FOR STEP BOLT DETAILS SEE DRAWING B651264.

15. FOR FOUNDATION DETAILS SEE DRAWING DWG-0693 & B090548.

16. FOR SHORT BASE INSTALLATION SEE DRAWING NUMBER CU730104.

FILE NO.

REVISIONS

REV.	DESCRIPTION	DWN	CHK	APP
5	REVISED TO INCLUDE ANCHOR BOLT CLUSTER & ANCHOR BOLT FULL SIZE TEMPLATES IN TABLE DATE: 6/14/2019	SAL	JDM	HA

PO BOX 5999
PEORIA, IL 61601-5999
TOLL FREE 800-727-ROHN

THIS DRAWING IS THE PROPERTY OF ROHN. IT IS NOT TO BE REPRODUCED, COPIED OR TRACED IN WHOLE OR IN PART WITHOUT OUR WRITTEN CONSENT.

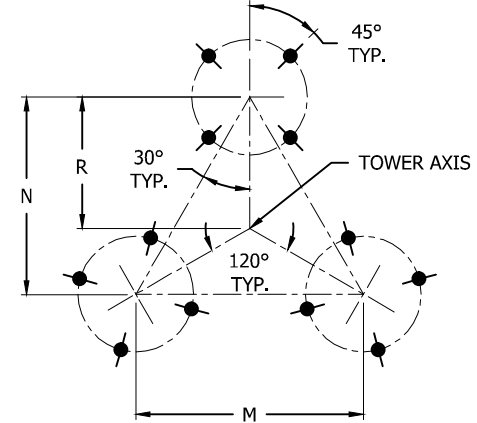
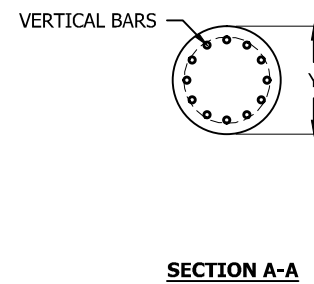
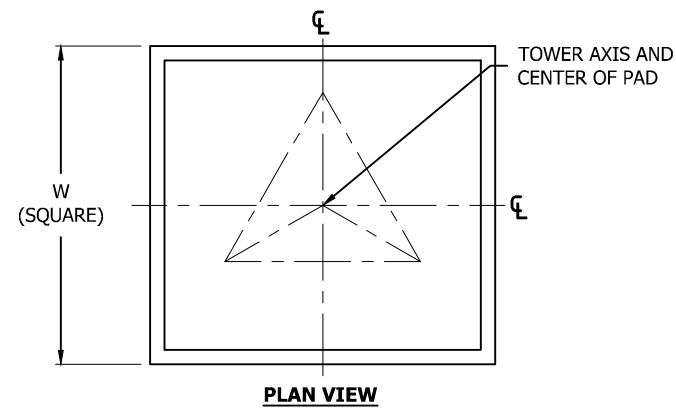
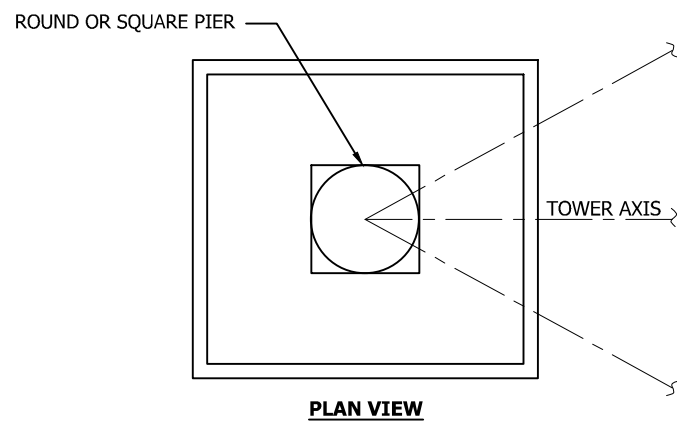
ERECTION PROFILE
HDSSV REV G 90 MPH 3-SEC, 3/4" ICE

DWN: CEJ	CHK'D: JDM	DATE: 06/20/13
ENG'R: HA	SHEET #: 1 OF 1	
PRJ. ENG'R:	PRJ. MANG'R:	

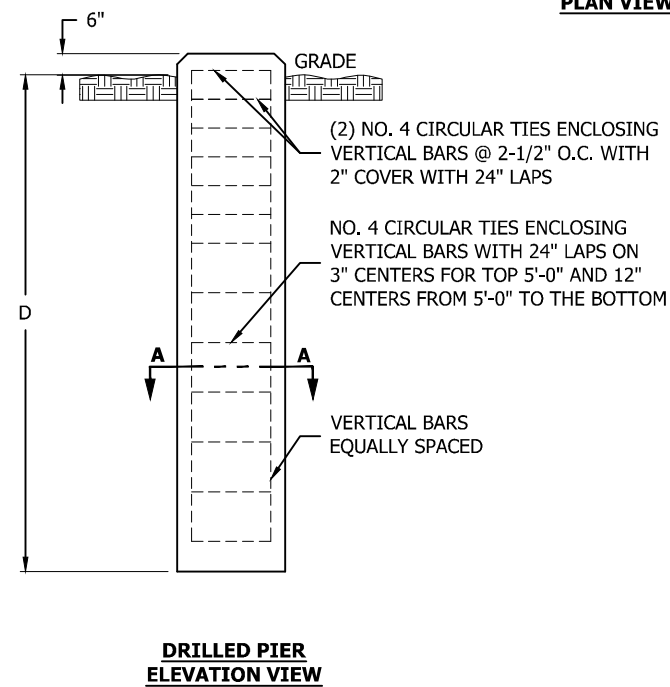
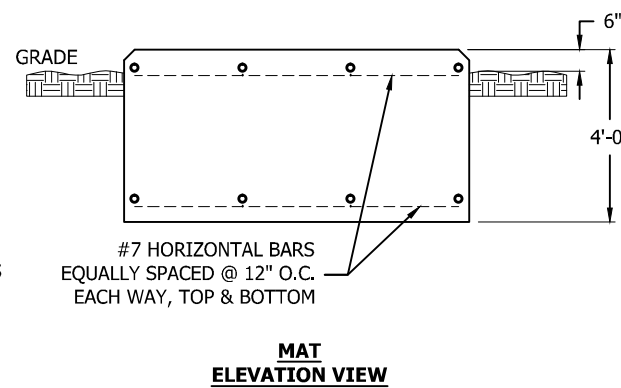
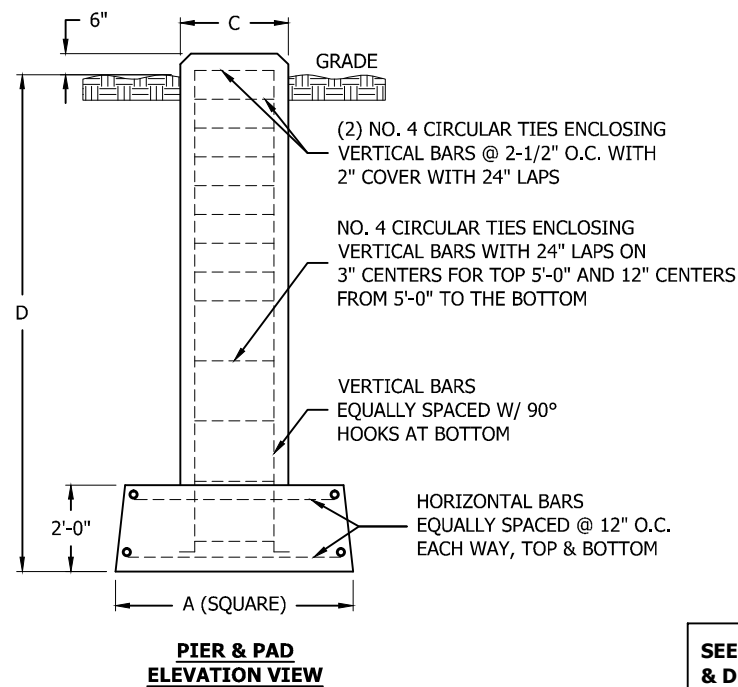
DRAWING NO: DWG-0805	REV: 5
-------------------------	-----------

SELF-SUPPORTING TOWER STANDARD FOUNDATIONS PER ANSI/TIA-222-G PRESUMPTIVE CLAY SOIL

TOWER BASE SECTION	ANCHOR BOLT DATA						PIER & PAD							MAT		DRILLED PIER			
	LAYOUT DIMENSIONS			A-BOLTS 12- REQ'D OR SHORT BASE	BOLT CIRCLE DIA. INCHES	PROJ. INCHES	DIMENSIONS			VERTICAL BARS	HORIZONTAL BARS	REQ'D CONCRETE (cu.yds-3 fnds)		W	REQ'D CONCRETE (cu.yds)	DIMENSIONS		VERTICAL BARS	REQ'D CONCRETE (cu.yds-3 fnds)
							D	A	C			ROUND PIER	SQUARE PIER			D	Y		
3WN	-	-	-	SB3	3 1/2	-	-	-	-	-	-	-	-	6'-9"	6.8	-	-	-	-
4N	-	-	-	SB4	4 1/4	-	-	-	-	-	-	-	-	8'-0"	9.5	-	-	-	-
5N	-	-	-	SB5	4 1/4	-	-	-	-	-	-	-	-	8'-9"	11.3	-	-	-	-
6N62	4'-6 1/4"	3'-11"	2'-7 5/16"	5/8X42	4 15/16	3 1/2	-	-	-	-	-	-	-	10'-3"	15.6	-	-	-	-
7N165	6'-6 3/4"	5'-8 3/16"	3'-9 1/2"	5/8X42	4 15/16	3 1/2	8'-0"	4'-6"	2'-0"	(8) -#6	#6	6.3	6.9	11'-6"	19.6	-	-	-	-
8N106	8'-6 3/4"	7'-5"	4'-11 5/16"	5/8X42	4 15/16	3 1/2	8'-0"	5'-0"	2'-0"	(8) - #6	#7	7.3	7.9	14'-3"	30.1	15'-0"	2'-6"	(8) - #8	8.4
9N325/9N82	10'-6 3/4"	9'-1 3/4"	6'-1 3/16"	5/8X42	4 15/16	3 1/2	8'-0"	5'-6"	2'-0"	(8) - #6	#7	8.4	9	16'-0"	37.9	18'-0"	2'-6"	(8) - #8	10.2
10N387/10N183	12'-7 1/4"	10'-11"	7'-3 5/16"	3/4X48	5 21/32	4	8'-6"	5'-6"	2'-0"	(8) - #6	#7	8.6	9.2	18'-3	49.3	20'-0"	2'-6"	(8) - #8	11.1
11N332	14'-7 7/8"	12'-8 5/16"	8'-5 9/16"	7/8X60	7 1/16	5	9'-0"	6'-0"	2'-6"	(8) - #8	#7	11.4	12.6	-	-	22'-0"	2'-6"	(8) - #8	12.3
12N18	16'-8 3/8"	14'-5 9/16"	9'-7 11/16"	7/8X60	7 1/16	5	9'-0"	6'-6"	2'-6"	(8) - #8	#7	12.8	13.9	-	-	25'-0"	2'-6"	(8) - #8	13.9



PLAN VIEW 6N THRU 12N



**SEE DRAWING B090548 FOR GENERAL FOUNDATION NOTES
& DRAWING B050439 FOR ANCHOR BOLT LAYOUT**

FILE NO.

REVISIONS				
REV.	DESCRIPTION	DWN	CHK	APP
3	ADDED 12N FOUNDATIONS DATE: 11/25/14	SM	HA	HA



PO BOX 5999
PEORIA, IL 61601-5999
TOLL FREE 800-727-ROHN

THIS DRAWING IS THE PROPERTY OF ROHN. IT IS NOT TO BE REPRODUCED, COPIED OR TRACED IN WHOLE OR IN PART WITHOUT OUR WRITTEN CONSENT.

SELF-SUPPORTING TOWER STANDARD FOUNDATIONS ANSI/TIA-222-G

DWN:	CHK'D:	DATE:
CEJ	SM	01/24/13

ENG'R:	SHEET #:
HA	

PRJ. ENG'R:	PRJ. MANG'R:
-------------	--------------

DRAWING NO:	REV:
DWG-0693	3

STANDARD FOUNDATION NOTES
ANSI/TIA-222-G

1. STANDARD FOUNDATION DESIGNS ARE IN ACCORDANCE WITH ANSI/TIA-222-G, "STRUCTURAL STANDARDS FOR STEEL ANTENNA TOWERS AND ANTENNA SUPPORTING STRUCTURES", SECTION 9 AND ANNEX F FOR THE FOLLOWING PRESUMPTIVE CLAY SOIL PARAMETERS:

N (blows/ft) [blows/m]	Φ (deg)	Y (lb/ft ³) [kN/m ³]	C (psf) [kPa]	Ultimate Bearing (psf) [kPa]		Ultimate Skin Friction (psf) [kPa]	k (pci) [kN/m ³]	ϵ_{50}
				Shallow Fnds.	Deep Fnds.			
8 [26]	0	110 [17]	1000 [48]	5000 [240]	9000 [431]	500 [24]	150 [41,000]	0.01

2. THE PURCHASER MUST VERIFY THAT ACTUAL SITE SOIL PARAMETERS MEET OR EXCEED ANSI/TIA-222-G PRESUMPTIVE CLAY SOIL DESIGN PARAMETERS AND THAT THE PENETRATION AND/OR ZONE OF SEASONAL MOISTURE VARIATION AT THE SITE. FOUNDATION DESIGN MODIFICATIONS MAY BE REQUIRED IN THE EVENT PRESUMPTIVE CLAY SOIL PARAMETERS ARE NOT APPLICABLE FOR THE ACTUAL SUBSURFACE CONDITIONS ENCOUNTERED.
3. A SITE-SPECIFIC INVESTIGATION IS REQUIRED FOR CLASS III STRUCTURES IN ACCORDANCE WITH ANSI/TIA-222-G.
4. FOUNDATION DESIGNS ASSUME FIELD INSPECTIONS WILL BE PERFORMED BY THE PURCHASER'S REPRESENTATIVE TO VERIFY THAT CONSTRUCTION MATERIALS, INSTALLATION METHODS AND ASSUMED DESIGN PARAMETERS ARE ACCEPTABLE BASED ON THE CONDITIONS EXISTING AT THE SITE.
5. WORK SHALL BE IN ACCORDANCE WITH LOCAL CODES, SAFETY REGULATIONS AND UNLESS OTHERWISE NOTED, THE LATEST REVISION OF ACI 318, "BUILDING CODE REQUIREMENTS FOR REINFORCED CONCRETE". PROCEDURES FOR THE PROTECTION OF EXCAVATIONS, EXISTING CONSTRUCTION AND UTILITIES SHALL BE ESTABLISHED PRIOR TO FOUNDATION INSTALLATION.
6. CONCRETE MATERIALS SHALL CONFORM TO THE APPROPRIATE STATE REQUIREMENTS FOR EXPOSED STRUCTURAL CONCRETE.
7. PROPORTIONS OF CONCRETE MATERIALS SHALL BE SUITABLE FOR THE INSTALLATION METHOD UTILIZED AND SHALL RESULT IN DURABLE CONCRETE FOR RESISTANCE TO LOCAL ANTICIPATED AGGRESSIVE ACTIONS. THE DURABILITY REQUIREMENT OF ACI 318 CHAPTER 4 SHALL BE SATISFIED BASED ON THE CONDITIONS EXPECTED AT THE SITE. AS A MINIMUM, CONCRETE SHALL DEVELOP A MINIMUM COMPRESSIVE STRENGTH OF 4500 PSI (31.0 MPa) IN 28 DAYS.
8. MAXIMUM SIZE OF AGGREGATE SHALL NOT EXCEED SIZE SUITABLE FOR INSTALLATION METHOD UTILIZED OR 1/3 CLEAR DISTANCE BEHIND OR BETWEEN REINFORCING. MAXIMUM SIZE MAY BE INCREASED TO 2/3 CLEAR DISTANCE PROVIDED WORKABILITY AND METHODS OF CONSOLIDATION SUCH AS VIBRATING WILL PREVENT HONEYCOMBS OR VOIDS.
9. REINFORCEMENT SHALL BE DEFORMED AND CONFORM TO THE REQUIREMENTS OF ASTM A615 GRADE 60 UNLESS OTHERWISE NOTED. SPLICES IN REINFORCEMENT SHALL NOT BE ALLOWED UNLESS OTHERWISE INDICATED.
10. REINFORCING CAGES SHALL BE BRACED TO RETAIN PROPER DIMENSIONS DURING HANDLING, THROUGHOUT PLACEMENT OF CONCRETE AND DURING EXTRACTION OF TEMPORARY CASING.
11. WELDING IS PROHIBITED ON REINFORCING STEEL AND EMBEDMENTS.

12. MINIMUM CONCRETE COVER FOR REINFORCEMENT SHALL BE 3 INCHES (76 mm) UNLESS OTHERWISE NOTED. APPROVED SPACERS SHALL BE USED TO INSURE A 3 INCH (76 mm) MINIMUM COVER ON REINFORCEMENT. CONCRETE COVER FROM TOP OF FOUNDATION TO ENDS OF VERTICAL REINFORCEMENT SHALL NOT EXCEED 3 INCHES (76 mm) NOR BE LESS THAN 2 INCHES (51 mm).
13. SPACERS SHALL BE ATTACHED INTERMITTENTLY THROUGHOUT THE ENTIRE LENGTH OF VERTICAL REINFORCING CAGES TO INSURE CONCENTRIC PLACEMENT OF CAGES IN EXCAVATIONS.
14. FOUNDATION DESIGNS ASSUME STRUCTURAL BACKFILL TO BE COMPACTED IN 8 INCH (200 mm) MAXIMUM LAYERS TO 95% OF MAXIMUM DRY DENSITY AT OPTIMUM MOISTURE CONTENT IN ACCORDANCE WITH ASTM D698. ADDITIONALLY, STRUCTURAL BACKFILL MUST HAVE A MINIMUM COMPACTED UNIT WEIGHT OF 100 POUNDS PER CUBIC FOOT (16 kN/m3).
15. FOUNDATION DESIGNS ASSUME LEVEL GRADE AT THE SITE.
16. FOUNDATION INSTALLATION SHALL BE SUPERVISED BY PERSONNEL KNOWLEDGEABLE AND EXPERIENCED WITH THE PROPOSED FOUNDATION TYPE. CONSTRUCTION SHALL BE IN ACCORDANCE WITH GENERALLY ACCEPTED INSTALLATION PRACTICES.
17. FOR FOUNDATION AND ANCHOR TOLERANCES SEE DRAWING A810214.
18. LOOSE MATERIAL SHALL BE REMOVED FROM BOTTOM OF EXCAVATION PRIOR TO CONCRETE PLACEMENT. SIDES OF EXCAVATION SHALL BE ROUGH AND FREE OF LOOSE CUTTINGS.
19. CONCRETE SHALL BE PLACED IN A MANNER THAT WILL PREVENT SEGREGATION OF CONCRETE MATERIALS, INFILTRATION OF WATER OR SOIL AND OTHER OCCURRENCES WHICH MAY DECREASE THE STRENGTH OR DURABILITY OF THE FOUNDATION.
20. FREE FALL CONCRETE MAY BE USED PROVIDED FALL IS VERTICAL DOWN WITHOUT HITTING SIDES OF EXCAVATION, FORMWORK, REINFORCING BARS, FORM TIES, CAGE BRACING OR OTHER OBSTRUCTIONS. UNDER NO CIRCUMSTANCES SHALL CONCRETE FALL THROUGH WATER.
21. CONCRETE SHALL BE PLACED AGAINST UNDISTURBED SOIL EXCEPT FOR PIERS OR PIER AND PAD FOUNDATIONS. FORMS FOR PIERS SHALL BE REMOVED PRIOR TO PLACING STRUCTURAL BACKFILL.
22. CONSTRUCTION JOINTS, IF REQUIRED IN PIER MUST BE AT LEAST 12 INCHES (305 mm) BELOW BOTTOM OF EMBEDMENTS AND MUST BE INTENTIONALLY ROUGHENED TO A FULL AMPLITUDE OF 1/4 INCH (6 mm). FOUNDATION DESIGN ASSUMES NO OTHER CONSTRUCTION JOINTS.
23. CASING, IF USED, SHALL NOT BE LEFT IN PLACE. EQUIPMENT, PROCEDURES, AND PROPORTIONS OF CONCRETE MATERIALS SHALL INSURE CONCRETE WILL NOT BE ADVERSELY DISTURBED UPON CASING REMOVAL. DRILLING FLUID, IF USED, SHALL BE FULLY DISPLACED BY CONCRETE AND SHALL NOT BE DETRIMENTAL TO CONCRETE OR SURROUNDING SOIL. CONTAMINATED CONCRETE SHALL BE REMOVED FROM TOP OF FOUNDATION AND REPLACED WITH FRESH CONCRETE.
24. TOP OF FOUNDATION SHALL BE SLOPED TO DRAIN WITH A FLOATED FINISHED. EXPOSED EDGES OF CONCRETE SHALL BE CHAMFERED 3/4" X 3/4" (19 mm X 19 mm) MINIMUM.
25. FOR ANCHOR BLOCK TYPE FOUNDATIONS, FOR GUYED TOWERS, ADDITIONAL CORROSION PROTECTION MAY BE REQUIRED FOR STEEL GUY ANCHORS IN DIRECT CONTACT WITH SOIL. DESIGN ASSUMES PERIODIC INSPECTIONS WILL BE PERFORMED OVER THE LIFE OF THE STRUCTURE TO DETERMINE IF ADDITIONAL ANCHOR CORROSION PROTECTION MEASURES MUST BE IMPLEMENTED BASED ON OBSERVED SITE-SPECIFIC CONDITIONS.

FILE NO.

REV.

DESCRIPTION

DWN

CHK

APP

2

REVISED NOTE 7 TO 4500 PSI

DATE: 2/10/2014

JHY

HA

HA

ROHN

PRODUCTS

PO BOX 5999
PEORIA, IL 61601-5999
TOLL FREE 800-727-ROHN

THIS DRAWING IS THE PROPERTY OF ROHN. IT IS NOT TO BE REPRODUCED, COPIED OR TRACED IN WHOLE OR IN PART WITHOUT OUR WRITTEN CONSENT.

ANSI/TIA-222-G
STANDARD FOUNDATION NOTES

DWN:

FAD

CHK'D:

HA

DATE:

Nov/20/2009

ENG'R:

HA

SHEET #:

1 OF 1

PRJ. ENG'R:

PRJ. MANG'R:

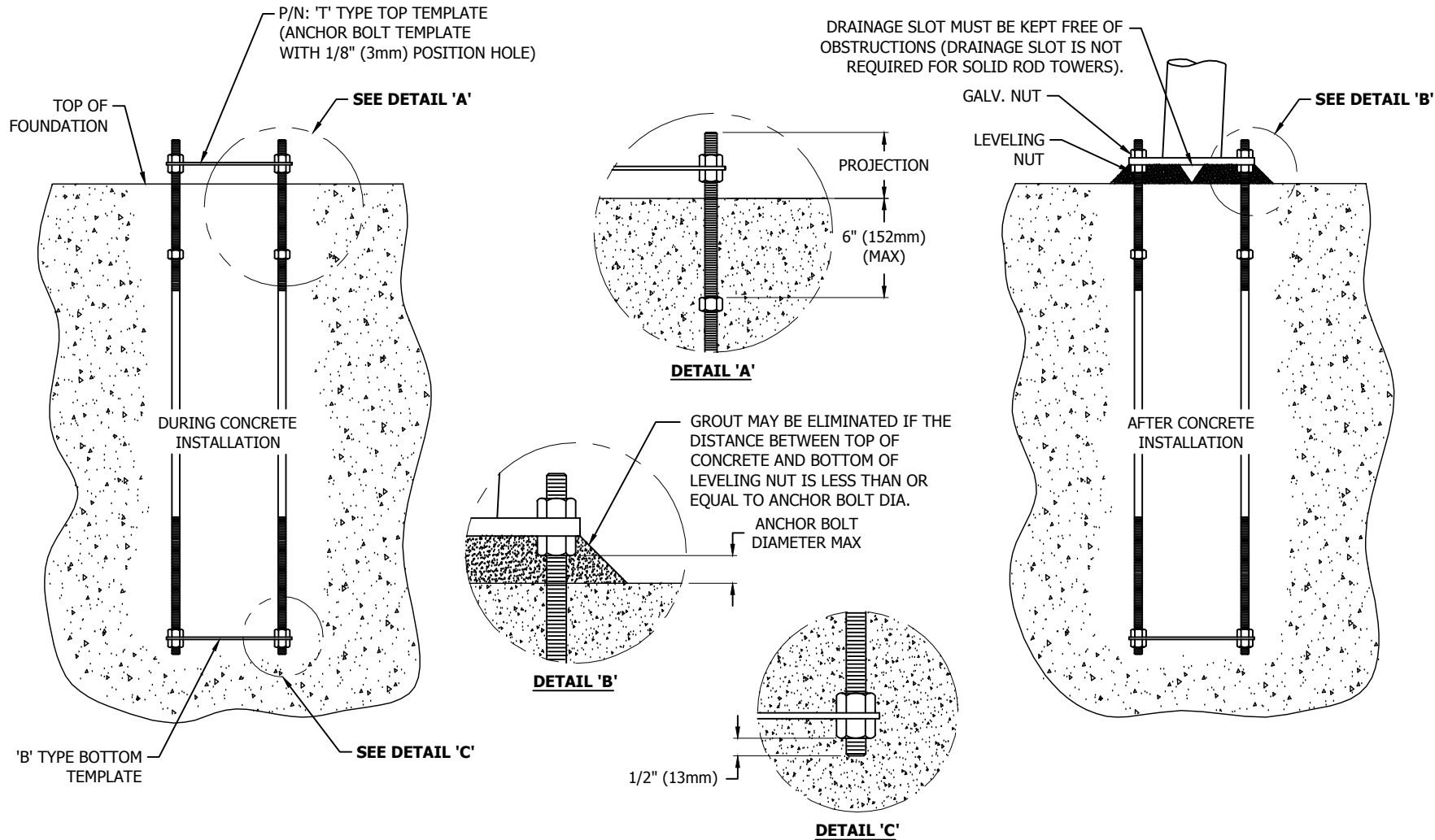
DRAWING NO:

B090548

REV:

2

FILE NO.				
Standard-SSV				
REVISIONS				
REV.	DESCRIPTION	DWN	CHK	APP
8	REDRAWN TO AUTOCAD DATE: Jul/17/2006	JDA	JDM	H.A
DWG REFERENCE				
THIS DRAWING IS THE PROPERTY OF ROHN. IT IS NOT TO BE REPRODUCED, COPIED OR TRACED IN WHOLE OR IN PART WITHOUT OUR WRITTEN CONSENT.				
FOUNDATION & ANCHOR TOLERANCE				
DWN:		CHK'D:	DATE:	
CSR		CTL	Sep/25/1987	
ENG'R:				
XK				
DRAWING NO:			REV:	
A810214			8	



ANCHOR BOLT INSTALLATION TOLERANCES

1. FACE SPREAD DIMENSION CENTER-TO-CENTER OF ANCHOR BOLT CIRCLES - PLUS OR MINUS 1/16" (2mm) OR 1/16"(2mm) PER 20 FT. (6m) OF FACE SPREAD.
2. MAXIMUM DIFFERENCE BETWEEN ANY TWO FOUNDATION ELEVATIONS - 1/2" (13mm).
3. CONCRETE DIMENSIONS - PLUS OR MINUS 1" (25mm).
4. DEPTH OF FOUNDATION - PLUS 3" (76mm) OR MINUS 0".
5. DRILLED FOUNDATIONS OUT OF PLUMB - 1.0 DEGREE.
6. REINFORCING STEEL PLACEMENT - PER A.C.I. 301.
7. PROJECTION OF EMBEDMENTS - PLUS OR MINUS 1/8" (3mm).
8. VERTICAL EMBEDMENTS OUT OF PLUMB -1/2 DEGREE.
9. MAXIMUM DISTANCE FROM CENTERLINE OF ANCHOR BOLTS TO CENTERLINE OF FOUNDATION - 1/24 OF PIER DIAMETER UP TO A MAXIMUM OF 2" (50mm).
10. ANCHOR BOLT SPACING - 1/16" (2mm).
11. ANCHOR BOLT CIRCLE ORIENTATION - 1/4 DEGREE.
12. ANCHOR BOLT CIRCLE DIAMETER - PLUS OR MINUS 1/16" (2mm).

!!! WARNING !!!

- AFTER ANCHOR BOLTS ARE INSTALLED AND CONCRETE HAS TAKEN ITS INITIAL SET, ANCHOR BOLTS MUST NOT BE MOVED, BENT OR REALIGNED IN ANY MANNER.

ANCHOR BOLT TIGHTENING NOTES

1. NUTS, THREADS AND ALL NUT CONTACT SURFACES MUST BE CLEANED AND LUBRICATED AFTER CONCRETE INSTALLATION AND IMMEDIATELY BEFORE INSTALLATION OF LEVELING AND TOP NUTS. NUTS MUST BE FREE TO MOVE THROUGHOUT THE ENTIRE LENGTH OF THE ANCHOR BOLT THREAD PROJECTION.
2. AFTER LEVELING THE LEVELING NUTS AND SETTING THE BASE PLATE, TOP NUTS MUST BE INSTALLED IN AN INCREMENTAL STAR TIGHTENING SEQUENCE TO A SNUG TIGHT CONDITION FOLLOWED BY TIGHTENING THE LEVELING NUTS IN A SIMILAR PATTERN TO A SNUG TIGHT CONDITION. SNUG TIGHT IS DEFINED BY THE TIGHTNESS OBTAINED WITH THE EFFORT OF ONE PERSON WITH A 12 INCH NOMINAL LENGTH WRENCH.
3. AFTER ALL TOP AND LEVELING NUTS ARE TIGHTENED TO A SNUG TIGHT CONDITION, TOP NUTS SHALL BE FURTHER TIGHTENED IN AN INCREMENTAL STAR PATTERN WITH THE LEVELING NUTS SECURED TO RESULT IN A 1/3 TOP NUT ROTATION FOR ANCHOR BOLTS 1-1/2 INCHES OR LESS IN DIAMETER, OR A 1/6 TOP NUT ROTATION FOR ANCHOR BOLTS GREATER THAN 1-1/2 INCHES IN DIAMETER.

NOTES

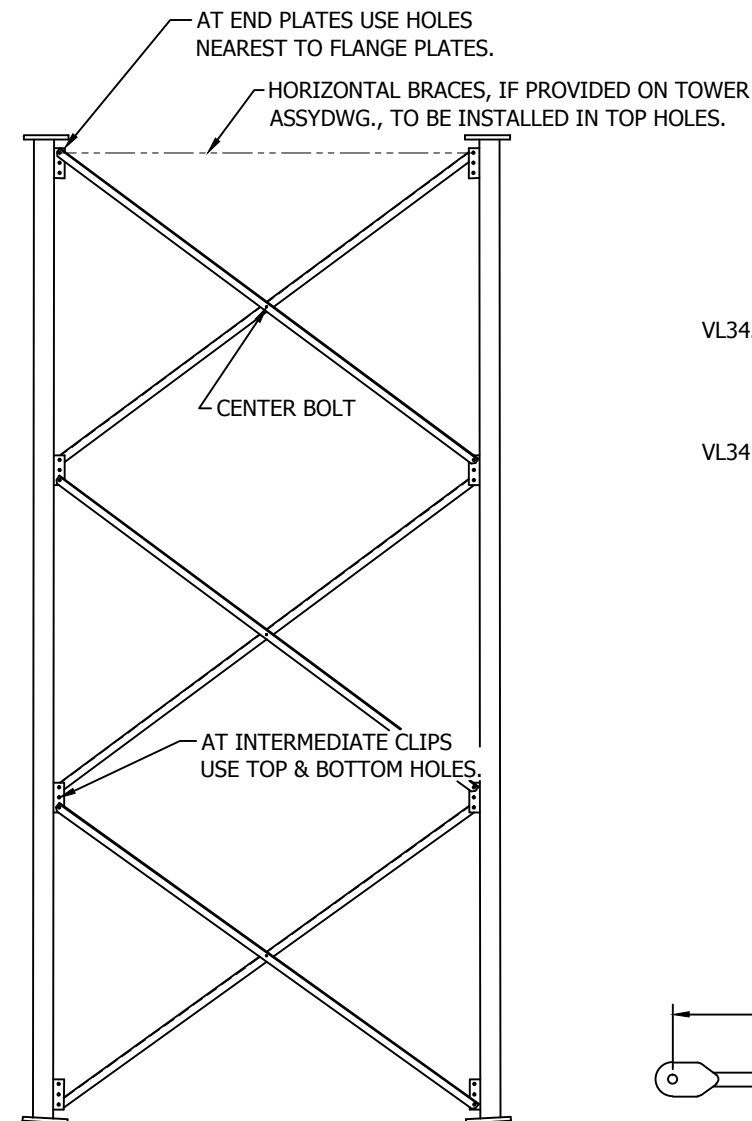
1. ALL ANCHOR BOLTS MUST MEET OR EXCEED REQUIREMENTS OF A.S.T.M. F1554-S2, S5 GRADE 105.
2. GROUT TO BE 5000 PSI MIN. ULTIMATE STRENGTH/7 DAY NON-SHRINKING AND NON-METALLIC.
3. SPECIAL CARE MUST BE TAKEN WHEN LIFTING ANCHOR BOLT CLUSTER, IN ORDER TO PREVENT ANCHOR BOLT TEMPLATE DISTORTION.
4. ANCHOR BOLT ASSEMBLY MUST BE ADEQUATELY SUPPORTED AND RESTRAINED TO PREVENT MOVEMENT OF THE CLUSTER DURING CONCRETE INSTALLATION.
5. IT IS THE RESPONSIBILITY OF THE FOUNDATION CONTRACTOR TO VERIFY THAT THE CORRECT ANCHOR BOLT TEMPLATE AND FOUNDATION SHOWN ON RESPECTIVE SITE DRAWINGS ARE BEING USED. IT IS THE RESPONSIBILITY OF THE FOUNDATION DESIGN ENGINEER TO INSURE THAT THE ANCHORAGES PROVIDED ARE COMPATIBLE WITH THE PROPOSED FOUNDATION DESIGNS AND THAT THE CAPACITIES OF THE ANCHORAGES ARE NOT LIMITED BY THE STRENGTH OF THE FOUNDATIONS.
- 6.

!! WARNING !!
PRIOR TO PLACING CONCRETE:

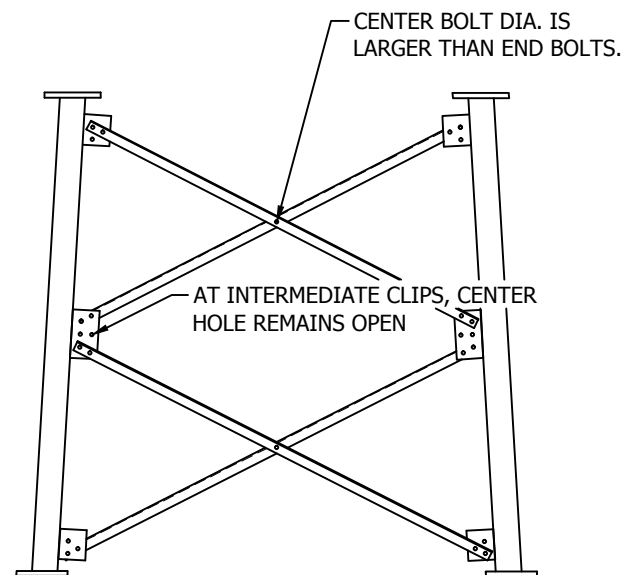
- **CHECK THAT THE TEMPLATE ANCHOR BOLT CIRCLE MATCHES THE ANCHOR BOLT CIRCLE SHOWN ON THE STRUCTURE DRAWING.**
- **CALL ROHN (309)-566-3000 FOR ANY DISCREPANCY.**

FILE NO.

REVISIONS				
REV.	DESCRIPTION	DWN	CHK	APP
4	ADDED DIMENSION TO SHOW PROJECTION DATE: 01/30/14	CEJ	JDM	HA

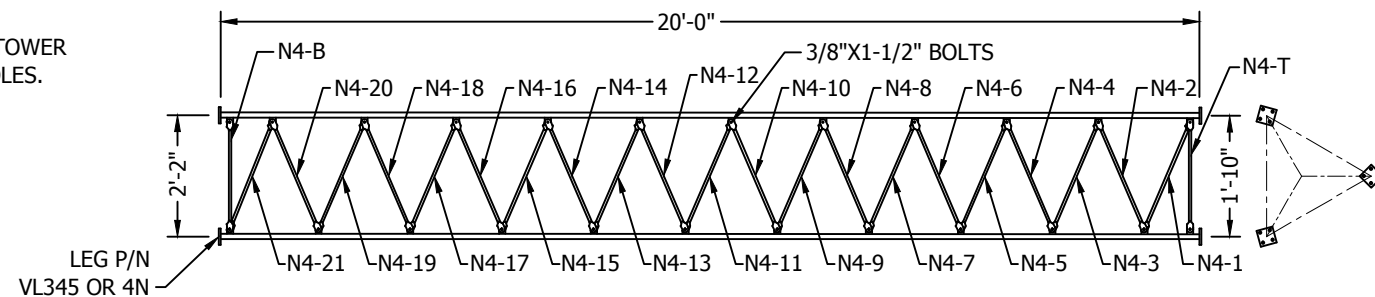


TYPICAL ONE BOLT, BRACE CONNECTION DETAIL

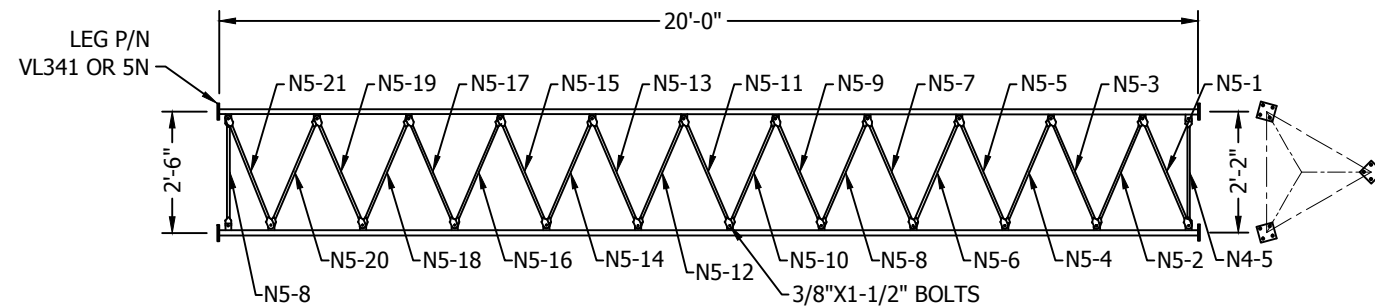


TYPICAL TWO-BOLT, BRACE CONNECTION DETAIL

NOTE: SECTIONS SHOULD BE ASSEMBLED ON EVEN GROUND & LEVELED TO INSURE STRAIGHTNESS

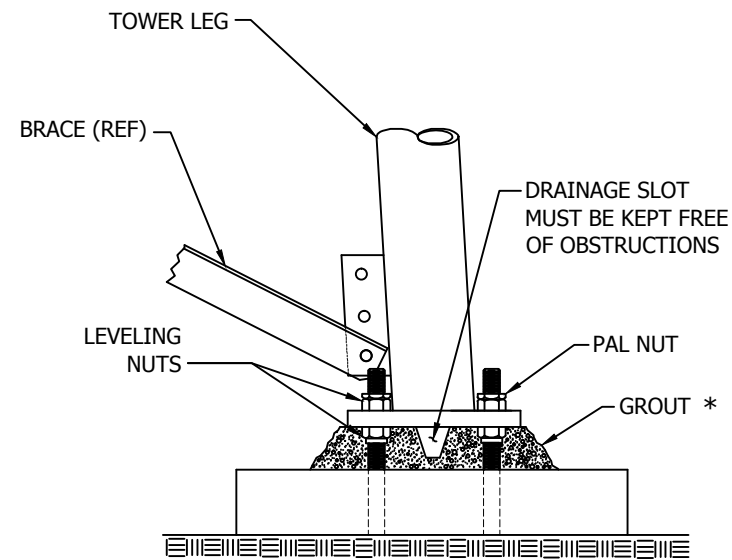
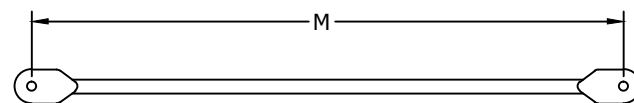


SECTION 4N



SECTION 5N

IMPORTANT: LEG P/N IS STAMPED AT BOTTOM OF BASE FLANGE PLATE OF EACH SECTION LEG.



GROUTING AND DRAINAGE DETAILS

* GROUT MUST BE STRUCTURAL & MUST BE 5000 PSI (34.5 MPa) MINIMUM ULTIMATE STRENGTH NON-SHRINK & NON-METALLIC OR APPROVED EQUAL AND INSTALLED ACCORDING TO MANUFACTURER'S RECOMMENDATIONS.

SECTION 4N		SECTION 5N	
P/N	M	P/N	M
N4-1	21 3/8"	N5-1	24 3/4"
N4-2	21 15/16"	N5-2	25 1/4"
N4-3	22 1/16"	N5-3	25 7/16"
N4-4	22 1/4"	N5-4	25 5/8"
N4-5	22 3/8"	N5-5	25 3/4"
N4-6	22 9/16"	N5-6	25 15/16"
N4-7	22 3/4"	N5-7	26 1/8"
N4-8	22 7/8"	N5-8	26 1/4"
N4-9	23 1/16"	N5-9	26 7/16"
N4-10	23 3/16"	N5-10	26 5/8"
N4-11	23 3/8"	N5-11	26 3/4"
N4-12	23 9/16"	N5-12	26 15/16"
N4-13	23 11/16"	N5-13	27 1/8"
N4-14	23 7/8"	N5-14	27 5/16"
N4-15	24 1/16"	N5-15	27 7/16"
N4-16	24 3/16"	N5-16	27 5/8"
N4-17	24 3/8"	N5-17	27 13/16"
N4-18	24 9/16"	N5-18	28"
N4-19	24 11/16"	N5-19	28 1/8"
N4-20	24 7/8"	N5-20	28 5/16"
N4-21	25 1/16"	N5-21	28 1/2"
N4-T	18 9/16"		
N4-B	22 1/2"		

FILE NO. Standard-SSV

REVISIONS

REV.	DESCRIPTION	DWN	CHK	APP
8	VL341 WAS VL346 DATE: Mar/21/2006	M.F	JDM	H.A

DWG REFERENCE

ROHN
PRODUCTS
6718 WEST PLANK ROAD
PEORIA, IL 61604
TOLL FREE 800-727-ROHN

THIS DRAWING IS THE PROPERTY OF ROHN. IT IS NOT TO BE REPRODUCED, COPIED OR TRACED IN WHOLE OR IN PART WITHOUT OUR WRITTEN CONSENT.

TOWER PROFILE
GROUTING & DRAINAGE DETAIL

DWN:	O.H	CHK'D:	WDU	DATE:	Mar/03/1972
ENG'R:	TWS				
DRAWING NO:	SK720305	REV:	8		



ELEVATION VIEW

GENERAL NOTES:

1. LEG PART NUMBER IS STAMPED AT THE BOTTOM OF EACH LEG AND MUST BE LOCATED AT THE BOTTOM OF THE SECTION FOR PROPER ASSEMBLY.
2. STEP BOLTS ARE PROVIDED ON 1 LEG ONLY.
3. THIS SECTION IS A BASE SECTION. SEE THE TOWER ASSEMBLY FOR ANCHOR BOLTS. PAL NUTS ARE SUPPLIED FOR THE ANCHOR BOLTS.
4. DRAWING IS N.T.S. AND IS FOR ASSEMBLY PURPOSES ONLY.
5. NOMINAL METRIC EQUIVALENTS ARE GIVEN FOR REFERENCE ONLY AND SHALL NOT BE SUBSTITUTED FOR THE DESCRIBED SIZES UNLESS OTHERWISE APPROVED BY ROHN PRODUCTS.





THIS DRAWING IS THE PROPERTY OF ROHN. IT IS NOT TO BE
REPRODUCED, COPIED OR TRACED IN WHOLE OR IN PART WITHOUT
OUR WRITTEN CONSENT.

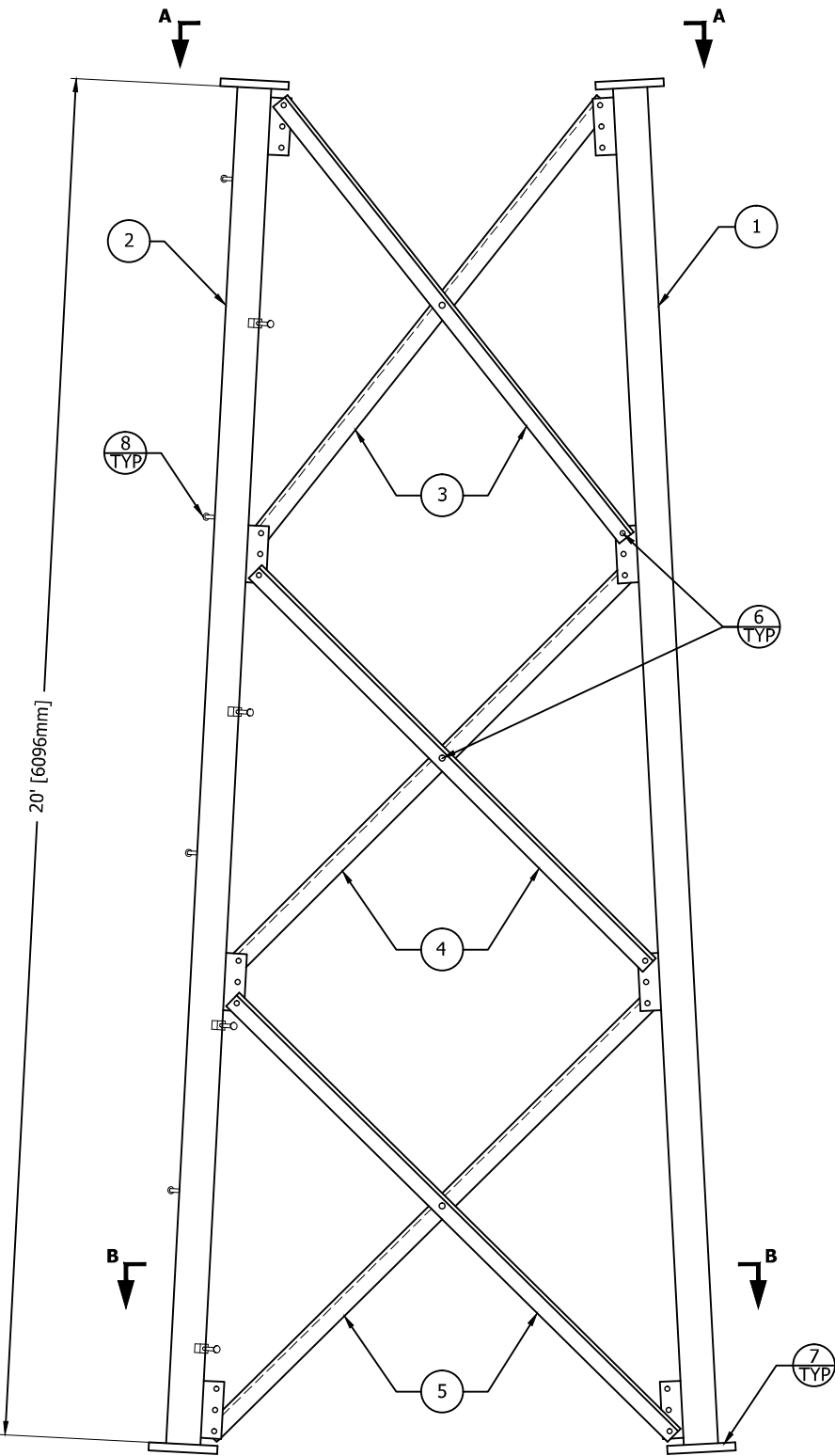


SECTION ASSEMBLY P/N: 10NH				
BILL OF MATERIAL				
ITEM	PART NO.	QTY	DESCRIPTION	
1	VL351	2	LEG SSV 9-11N 2.5EH 20' 5 6OF	[PIPE 64mm EH]
2	VL351S	1	LEG SSV 9-11N 2.5EH 20' 5 6OF	[PIPE 64mm EH]
3	N101	6	BRACE DS SS10T L2X.13X12.29'	[L 51x51x3
4	N102	6	BRACE DS SS10T L2X.13X12.86'	[L 51x51x3]
5	N103	6	BRACE DS SS10T L2X.13X13.35'	[L 51x51x3]
6	210017GA	45	BOLT ASSY 1/2 X 1-1/4 HSB A325	[M13x32]
7	210050GA	12	BOLT ASSY 3/4 X 2-3/4 HSB A325	[M19x70]
8	5/8STEP	16	BOLT ASSY STEP 5/8X7 W/DBN	[M16x178]

1. LEG PART NUMBER IS STAMPED AT THE BOTTOM OF EACH LEG AND MUST BE LOCATED AT THE BOTTOM OF THE SECTION FOR PROPER ASSEMBLY.
2. STEP BOLTS ARE PROVIDED ON 1 LEG ONLY.
3. FLANGE BOLTS ARE FOR FLANGE PLATES AT THE BOTTOM OF THE SECTION.
4. DRAWING IS N.T.S. AND IS FOR ASSEMBLY PURPOSES ONLY.
5. NOMINAL METRIC EQUIVALENTS ARE GIVEN FOR REFERENCE ONLY AND SHALL NOT BE SUBSTITUTED FOR THE DESCRIBED SIZES UNLESS OTHERWISE APPROVED BY ROHN PRODUCTS.



FILE NO.				
REVISIONS				
REV.	DESCRIPTION	DWN	CHK	APP
2	REDRAWN DATE: Aug/9/2012	JHY	JDM	HA
				
<div style="text-align: center;">  <p>PO BOX 5999 PEORIA, IL 61601-5999 TOLL FREE 800-727-ROHN</p> </div>				
<p>THIS DRAWING IS THE PROPERTY OF ROHN. IT IS NOT TO BE REPRODUCED, COPIED OR TRACED IN WHOLE OR IN PART WITHOUT OUR WRITTEN CONSENT.</p>				
<p style="text-align: center;">SECTION ASSEMBLY DETAILS FOR SSV 10NH</p>				
DWN: AED		CHK'D: HSK		DATE: Nov/2/1978
ENG'R: TWS		SHEET #: 1 OF 1		
PRJ. ENG'R:		PRJ. MANG'R:		
DRAWING NO: A780386				REV: 2

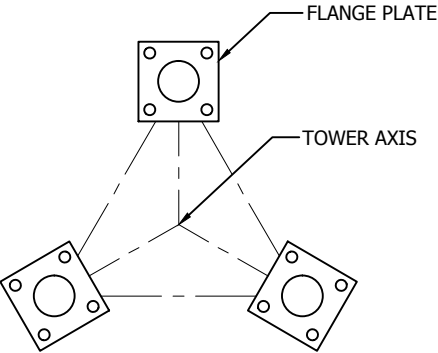


ELEVATION VIEW

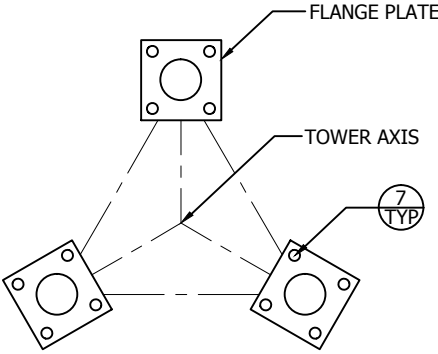
FLANGE	OFFSET	BEVEL	FLANGE PLATE (P/N)	SPREAD
TOP	N/A	N/A	5" X 5" X 3/4" (P/N: 5C)	8'-6 3/4" [2610mm]
BOTTOM	N/A	N/A	5" X 5" X 3/4" (P/N: 5C)	10'-6 3/4" [3219mm]

SECTION ASSEMBLY P/N: 9NH					
BILL OF MATERIAL					
ITEM	PART NO.	QTY	DESCRIPTION		
1	VL350	2	LEG SSV 9-11N 2.5EH 20' 5 5 S9	[PIPE 64mm EH]	
2	VL350S	1	LEG SSV 9-11N 2.5EH 20' 5 5 S9	[PIPE 64mm EH]	
3	N91	6	BRACE DS SS9T L1.75X.13X10.63'	[L 44x44x3]	
4	N92	6	BRACE DS SS9T L1.75X.13X11.17'	[L 44x44x3]	
5	N93	6	BRACE DS SS9T L1.75X.13X11.61'	[L 44x44x3]	
6	210017GA	45	BOLT ASSY 1/2 X 1-1/4 HSB A325	[M13x32]	
7	210033GA	12	BOLT ASSY 5/8 X 2-1/2 HSB A325	[M16x64]	
8	5/8STEP	16	BOLT ASSY STEP 5/8X7 W/DBN	[M16x178]	

- GENERAL NOTES:**
- LEG PART NUMBER IS STAMPED AT THE BOTTOM OF EACH LEG AND MUST BE LOCATED AT THE BOTTOM OF THE SECTION FOR PROPER ASSEMBLY.
 - STEP BOLTS ARE PROVIDED ON 1 LEG ONLY.
 - FLANGE BOLTS ARE FOR FLANGE PLATES AT THE BOTTOM OF THE SECTION.
 - DRAWING IS N.T.S. AND IS FOR ASSEMBLY PURPOSES ONLY.
 - NOMINAL METRIC EQUIVALENTS ARE GIVEN FOR REFERENCE ONLY AND SHALL NOT BE SUBSTITUTED FOR THE DESCRIBED SIZES UNLESS OTHERWISE APPROVED BY ROHN PRODUCTS.



VIEW A-A



VIEW B-B

FILE NO.

REVISIONS

REV.	DESCRIPTION	DWN	CHK	APP
4	REDRAWN DATE: Aug/9/2012	JHY	JDM	HA

PO BOX 5999
PEORIA, IL 61601-5999
TOLL FREE 800-727-ROHN

THIS DRAWING IS THE PROPERTY OF ROHN. IT IS NOT TO BE REPRODUCED, COPIED OR TRACED IN WHOLE OR IN PART WITHOUT OUR WRITTEN CONSENT.

SECTION ASSEMBLY
DETAILS FOR SSV 9NH

DWN:	CHK'D:	DATE:
AED	WDU	Nov/11/1978
ENG'R:	SHEET #:	
TWS	1 OF 1	
PRJ. ENG'R:	PRJ. MANG'R:	
DRAWING NO:		REV:
A780318		4



<u>FLANGE</u>	<u>OFFSET</u>	<u>BEVEL</u>	<u>FLANGE PLATE (P/N)</u>	<u>SPREAD</u>
TOP	N/A	N/A	5" X 5" X 3/4" (P/N: 5C)	6'-6 3/4" [2000mm]
BOTTOM	N/A	N/A	5" X 5" X 3/4" (P/N: 5C)	8'-6 3/4" [2610mm]

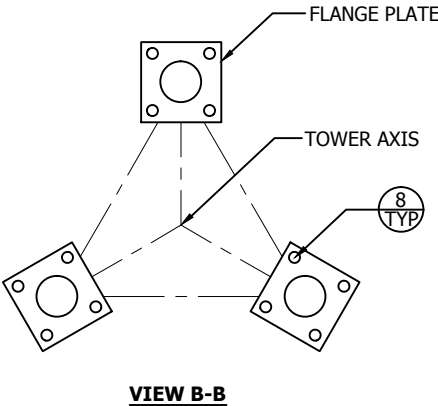
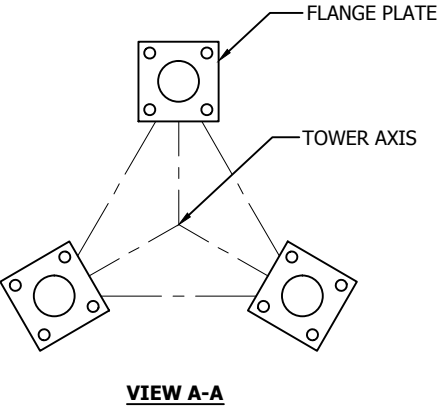
SECTION ASSEMBLY P/N: 8N

BILL OF MATERIAL

ITEM	PART NO.	QTY	DESCRIPTION
1	VL349	2	LEG SSV 8N 2.5STD 20' 5 5 [PIPE 64mm STD]
2	VL349S	1	LEG SSV 8N 2.5STD 20' 5 5 [PIPE 64mm STD]
3	N81	6	BRACE DS SS8T L1.5X.13X7.95' [L 38x38x3]
4	N82	6	BRACE DS SS8T L1.5X.13X8.36' [L 38x38x3]
5	N83	6	BRACE DS SS8T L1.5X.13X8.79' [L 38x38x3]
6	N84	6	BRACE DS SS8T L1.5X.13X9.11' [L 38x38x3]
7	210017GA	60	BOLT ASSY 1/2 X 1-1/4 HSB A325 [M13x32]
8	210033GA	12	BOLT ASSY 5/8 X 2-1/2 HSB A325 [M16x64]
9	5/8STEP	16	BOLT ASSY STEP 5/8X7 W/DBN [M16x178]

GENERAL NOTES:

1. LEG PART NUMBER IS STAMPED AT THE BOTTOM OF EACH LEG AND MUST BE LOCATED AT THE BOTTOM OF THE SECTION FOR PROPER ASSEMBLY.
2. STEP BOLTS ARE PROVIDED ON 1 LEG ONLY.
3. FLANGE BOLTS ARE FOR FLANGE PLATES AT THE BOTTOM OF THE SECTION.
4. DRAWING IS N.T.S. AND IS FOR ASSEMBLY PURPOSES ONLY.
5. NOMINAL METRIC EQUIVALENTS ARE GIVEN FOR REFERENCE ONLY AND SHALL NOT BE SUBSTITUTED FOR THE DESCRIBED SIZES UNLESS OTHERWISE APPROVED BY ROHN PRODUCTS.



FILE NO.

REVISIONS

REV.	DESCRIPTION	DWN	CHK	APP
3	REDRAWN DATE: Aug/9/2012	JHY	JDM	HA



PO BOX 5999
PEORIA, IL 61601-5999
TOLL FREE 800-727-ROHN

THIS DRAWING IS THE PROPERTY OF ROHN. IT IS NOT TO BE REPRODUCED, COPIED OR TRACED IN WHOLE OR IN PART WITHOUT OUR WRITTEN CONSENT.

SECTION ASSEMBLY DETAILS FOR SSV 8N

DWN:	AED	CHK'D:	MDI	DATE:	Oct/28/1978
ENG'R:			TWS		
PRJ. ENG'R:			PRJ. MANG'R:		
DRAWING NO:					REV:
A780252					3



SECTION ASSEMBLY P/N: 7N				
BILL OF MATERIAL				
ITEM	PART NO.	QTY	DESCRIPTION	
1	VL348	2	LEG SSV 6-7N 2STD 20' 5 SOFF	[PIPE 51mm STD]
2	VL348S	1	LEG SSV 6-7N 2STD 20' 5 SOFF	[PIPE 51mm STD]
3	N71	6	BRACE DS SS7T L1.5X.13X5.71'	[L 38x38x3]
4	N72	6	BRACE DS SS7T L1.5X.13X6.03'	[L 38x38x3]
5	N73	6	BRACE DS SS7T L1.5X.13X6.35'	[L 38x38x3]
6	N74	6	BRACE DS SS7T L1.5X.13X6.69'	[L 38x38x3]
7	N75	6	BRACE DS SS7T L1.5X.13X6.92'	[L 38x38x3]
8	210017GA	75	BOLT ASSY 1/2 X 1-1/4 HSB A325	[M13x32]
9	210033GA	12	BOLT ASSY 5/8 X 2-1/2 HSB A325	[M16x64]
10	5/8STEP	16	BOLT ASSY STEP 5/8X7 W/DBN	[M16x178]

1. LEG PART NUMBER IS STAMPED AT THE BOTTOM OF EACH LEG AND MUST BE LOCATED AT THE BOTTOM OF THE SECTION FOR PROPER ASSEMBLY.
2. STEP BOLTS ARE PROVIDED ON 1 LEG ONLY.
3. FLANGE BOLTS ARE FOR FLANGE PLATES AT THE BOTTOM OF THE SECTION.
4. DRAWING IS N.T.S. AND IS FOR ASSEMBLY PURPOSES ONLY.
5. NOMINAL METRIC EQUIVALENTS ARE GIVEN FOR REFERENCE ONLY AND SHALL NOT BE SUBSTITUTED FOR THE DESCRIBED SIZES UNLESS OTHERWISE APPROVED BY ROHN PRODUCTS.

[illegible]



<u>FLANGE</u>	<u>OFFSET</u>	<u>BEVEL</u>	<u>FLANGE PLATE (P/N)</u>	<u>SPREAD</u>
TOP	N/A	3 1/3° REV	4 1/2" X 4 1/2" X 5/8" (P/N: VL906)	2'-6" [762mm]
BOTTOM	N/A	N/A	5" X 5" X 3/4" (P/N: 5A)	4'-6 1/4" [1378mm]

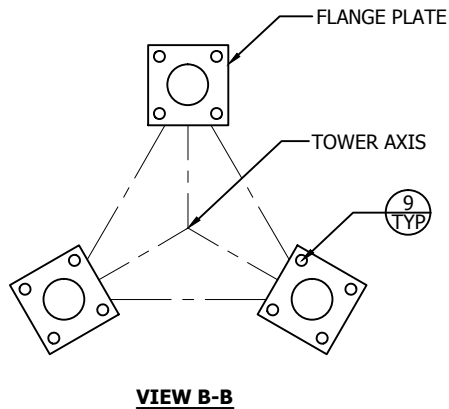
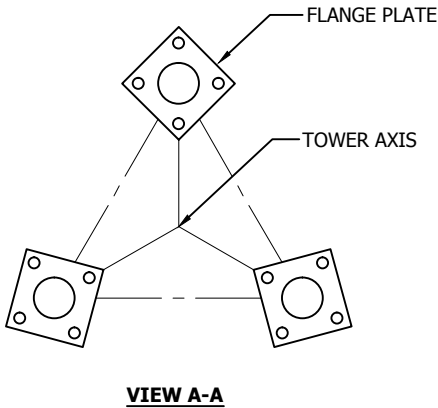
SECTION ASSEMBLY P/N: 6N

BILL OF MATERIAL

ITEM	PART NO.	QTY	DESCRIPTION
1	VL347	2	LEG SSV 6N 2STD 20' 45BEV 5 [PIPE 51mm STD]
2	VL347S	1	LEG SSV 6N 2STD 20' 45BEV 5 [PIPE 51mm STD]
3	N61	6	BRACE DS SS6T L1.5X.13X4.39' [L 38x38x3]
4	N62	6	BRACE DS SS6T L1.5X.13X4.61' [L 38x38x3]
5	N63	6	BRACE DS SS6T L1.5X.13X4.86' [L 38x38x3]
6	N64	6	BRACE DS SS6T L1.5X.13X5.14' [L 38x38x3]
7	N65	6	BRACE DS SS6T L1.5X.13X5.28' [L 38x38x3]
8	210017GA	75	BOLT ASSY 1/2 X 1-1/4 HSB A325 [M13x32]
9	210033GA	12	BOLT ASSY 5/8 X 2-1/2 HSB A325 [M16x64]
10	5/8STEP	16	BOLT ASSY STEP 5/8X7 W/DBN [M16x178]

GENERAL NOTES:

1. LEG PART NUMBER IS STAMPED AT THE BOTTOM OF EACH LEG AND MUST BE LOCATED AT THE BOTTOM OF THE SECTION FOR PROPER ASSEMBLY.
2. STEP BOLTS ARE PROVIDED ON 1 LEG ONLY.
3. FLANGE BOLTS ARE FOR FLANGE PLATES AT THE BOTTOM OF THE SECTION.
4. DRAWING IS N.T.S. AND IS FOR ASSEMBLY PURPOSES ONLY.
5. NOMINAL METRIC EQUIVALENTS ARE GIVEN FOR REFERENCE ONLY AND SHALL NOT BE SUBSTITUTED FOR THE DESCRIBED SIZES UNLESS OTHERWISE APPROVED BY ROHN PRODUCTS.



FILE NO.

REVISIONS				
REV.	DESCRIPTION	DWN	CHK	APP
6	REDRAWN DATE: Aug/9/2012	JHY	JDM	HA

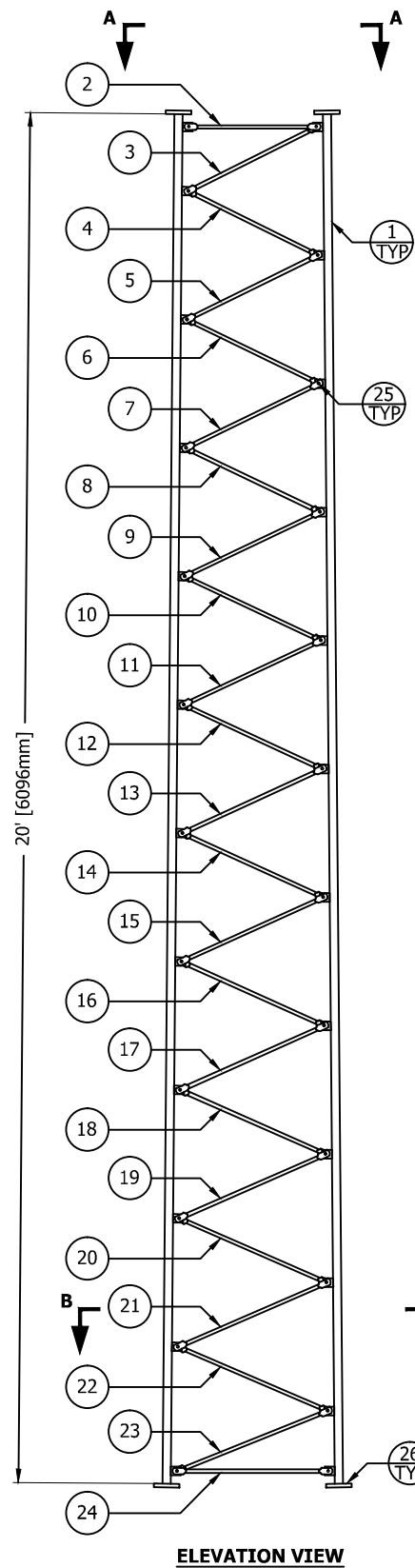


PO BOX 5999
PEORIA, IL 61601-5999
TOLL FREE 800-727-ROHN

THIS DRAWING IS THE PROPERTY OF ROHN. IT IS NOT TO BE
REPRODUCED, COPIED OR TRACED IN WHOLE OR IN PART WITHOUT
OUR WRITTEN CONSENT.

SECTION ASSEMBLY DETAILS FOR SSV 6N

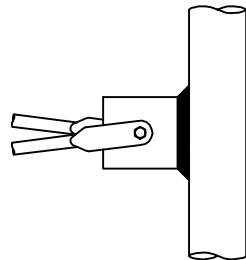
DWN:	AED	CHK'D:	WDU	DATE:	Oct/18/1978
ENG'R:			TWS		
PRJ. ENG'R:			PRJ. MANG'R:		
DRAWING NO:					REV:
A780200					6



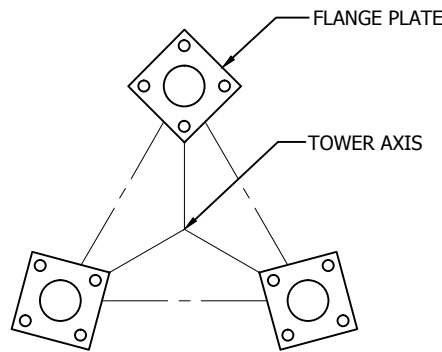
ELEVATION VIEW

GENERAL NOTES:

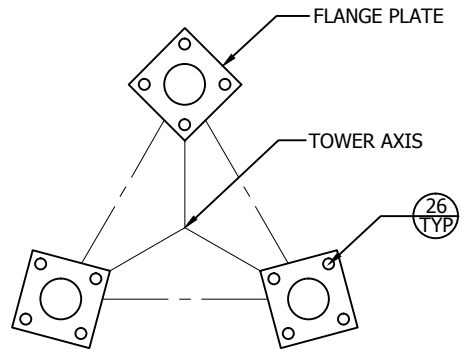
- LEG PART NUMBER IS STAMPED AT THE BOTTOM OF EACH LEG AND MUST BE LOCATED AT THE BOTTOM OF THE SECTION FOR PROPER ASSEMBLY.
- FLANGE BOLTS ARE FOR FLANGE PLATES AT THE BOTTOM OF THE SECTION.
- DRAWING IS N.T.S. AND IS FOR ASSEMBLY PURPOSES ONLY.
- NOMINAL METRIC EQUIVALENTS ARE GIVEN FOR REFERENCE ONLY AND SHALL NOT BE SUBSTITUTED FOR THE DESCRIBED SIZES UNLESS OTHERWISE APPROVED BY ROHN PRODUCTS.



BRACING DETAIL



VIEW A-A



VIEW B-B

FLANGE	OFFSET	BEVEL	FLANGE PLATE (P/N)	SPREAD
TOP	N/A	N/A	4 1/2" X 4 1/2" X 5/8" (P/N: VL901)	2'-2" [660mm]
BOTTOM	N/A	N/A	4 1/2" X 4 1/2" X 5/8" (P/N: VL901)	2'-6" [762mm]

SECTION ASSEMBLY P/N: 5N

BILL OF MATERIAL

ITEM	PART NO.	QTY	DESCRIPTION	
1	VL341	3	LEG SSV 5N/5NST 1.44SR 20' 45	[BAR RND 37mm SR]
2	N45	3	BRACE DIAG SSV RD BAR .63X1.98	[BAR RND 16mm]
3	N51	3	BRACE DIAG SSV RD BAR .63X2.18	[BAR RND 16mm]
4	N52	3	BRACE DIAG SSV RD BAR .63X2.22	[BAR RND 16mm]
5	N53	3	BRACE DIAG SSV RD BAR .63X2.23	[BAR RND 16mm]
6	N54	3	BRACE DIAG SSV RD BAR .63X2.25	[BAR RND 16mm]
7	N55	3	BRACE DIAG SSV RD BAR .63X2.26	[BAR RND 16mm]
8	N56	3	BRACE DIAG SSV RD BAR .63X2.28	[BAR RND 16mm]
9	N57	3	BRACE DIAG SSV RD BAR .63X2.29	[BAR RND 16mm]
10	N58	3	BRACE DIAG SSV RD BAR .63X2.30	[BAR RND 16mm]
11	N59	3	BRACE DIAG SSV RD BAR .63X2.31	[BAR RND 16mm]
12	N510	3	BRACE DIAG SSV RD BAR .63X2.33	[BAR RND 16mm]
13	N511	3	BRACE DIAG SSV RD BAR .63X2.34	[BAR RND 16mm]
14	N512	3	BRACE DIAG SSV RD BAR .63X2.36	[BAR RND 16mm]
15	N513	3	BRACE DIAG SSV RD BAR .63X2.38	[BAR RND 16mm]
16	N514	3	BRACE DIAG SSV RD BAR .63X2.39	[BAR RND 16mm]
17	N515	3	BRACE DIAG SSV RD BAR .63X2.40	[BAR RND 16mm]
18	N516	3	BRACE DIAG SSV RD BAR .63X2.42	[BAR RND 16mm]
19	N517	3	BRACE DIAG SSV RD BAR .63X2.43	[BAR RND 16mm]
20	N518	3	BRACE DIAG SSV RD BAR .63X2.45	[BAR RND 16mm]
21	N519	3	BRACE DIAG SSV RD BAR .63X2.46	[BAR RND 16mm]
22	N520	3	BRACE DIAG SSV RD BAR .63X2.47	[BAR RND 16mm]
23	N521	3	BRACE DIAG SSV RD BAR .63X2.49	[BAR RND 16mm]
24	N58	3	BRACE DIAG SSV RD BAR .63X2.30	[BAR RND 16mm]
25	210008GA	72	BOLT ASSY 3/8 X 1-1/2 HCS G5	[M10x38]
26	210032GA	12	BOLT ASSY 5/8 X 2-1/4 HSB A325	[M16x57]

FILE NO.

REVISIONS

REV.	DESCRIPTION	DWN	CHK	APP
5	REDRAWN DATE: Aug/9/2012	JHY	JDM	HA

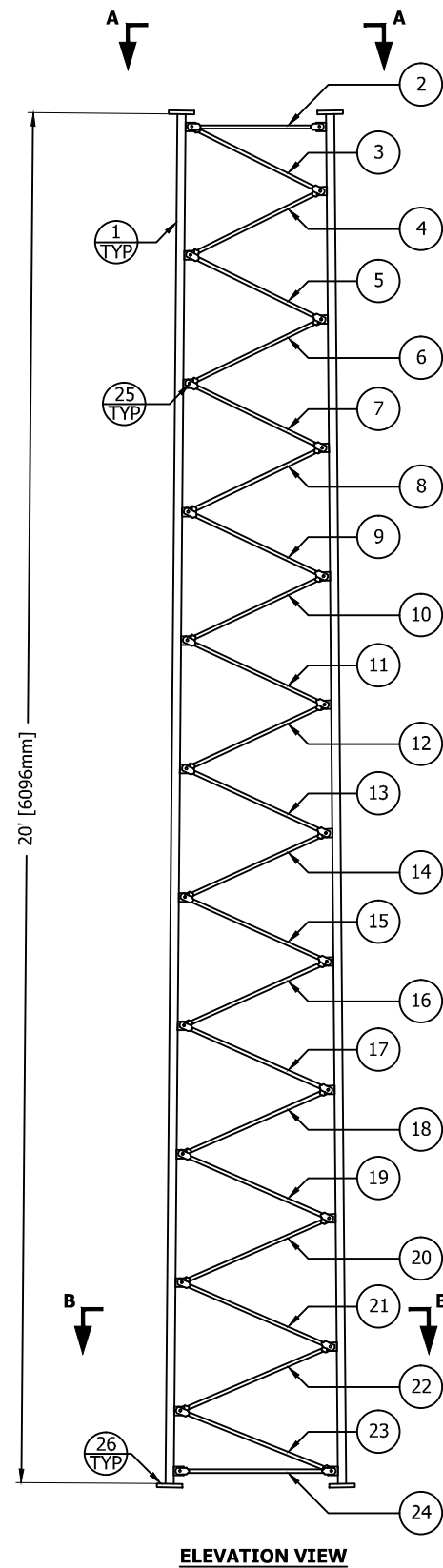


PO BOX 5999
PEORIA, IL 61601-5999
TOLL FREE 800-727-ROHN

THIS DRAWING IS THE PROPERTY OF ROHN. IT IS NOT TO BE REPRODUCED, COPIED OR TRACED IN WHOLE OR IN PART WITHOUT OUR WRITTEN CONSENT.

SECTION ASSEMBLY
DETAILS FOR SSV 5N

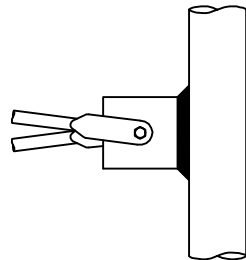
DWN:	CHK'D:	DATE:
AED	JD	Mar/22/1979
ENG'R:	SHEET #:	
TWS	1 OF 1	
PRJ. ENG'R:	PRJ. MANG'R:	
DRAWING NO:		REV:
A790119		5



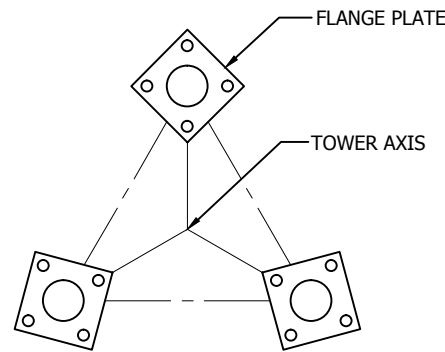
ELEVATION VIEW

GENERAL NOTES:

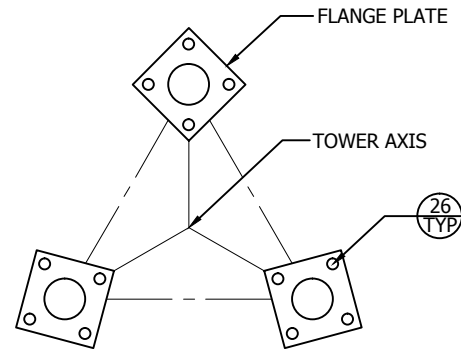
1. LEG PART NUMBER IS STAMPED AT THE BOTTOM OF EACH LEG AND MUST BE LOCATED AT THE BOTTOM OF THE SECTION FOR PROPER ASSEMBLY.
2. FLANGE BOLTS ARE FOR FLANGE PLATES AT THE BOTTOM OF THE SECTION.
3. DRAWING IS N.T.S. AND IS FOR ASSEMBLY PURPOSES ONLY.
4. NOMINAL METRIC EQUIVALENTS ARE GIVEN FOR REFERENCE ONLY AND SHALL NOT BE SUBSTITUTED FOR THE DESCRIBED SIZES UNLESS OTHERWISE APPROVED BY ROHN PRODUCTS.



BRACING DETAIL



VIEW A-A



VIEW B-B

FLANGE	OFFSET	BEVEL	FLANGE PLATE (P/N)	SPREAD
TOP	N/A	N/A	4" X 4" X 1/2" (P/N: 4A)	1'-10" [559mm]
BOTTOM	N/A	N/A	4 1/2" X 4 1/2" X 5/8" (P/N: 45A)	2'-2" [660mm]

SECTION ASSEMBLY P/N: 4N

BILL OF MATERIAL

ITEM	PART NO.	QTY	DESCRIPTION	
1	VL345	3	LEG SSV 4N 1.25SR 20' 4 45	[BAR RND 32mm SR]
2	N4T	3	BRACE H SSV RD BAR .63X1.66'	[BAR RND 16mm]
3	N41	3	BRACE DIAG SSV RD BAR .63X1.90	[BAR RND 16mm]
4	N42	3	BRACE DIAG SSV RD BAR .63X1.94	[BAR RND 16mm]
5	N43	3	BRACE DIAG SSV RD BAR .63X1.95	[BAR RND 16mm]
6	N44	3	BRACE DIAG SSV RD BAR .63X1.97	[BAR RND 16mm]
7	N45	3	BRACE DIAG SSV RD BAR .63X1.98	[BAR RND 16mm]
8	N46	3	BRACE DIAG SSV RD BAR .63X1.99	[BAR RND 16mm]
9	N47	3	BRACE DIAG SSV RD BAR .63X2.01	[BAR RND 16mm]
10	N48	3	BRACE DIAG SSV RD BAR .63X2.02	[BAR RND 16mm]
11	N49	3	BRACE DIAG SSV RD BAR .63X2.04	[BAR RND 16mm]
12	N410	3	BRACE DIAG SSV RD BAR .63X2.05	[BAR RND 16mm]
13	N411	3	BRACE DIAG SSV RD BAR .63X2.06	[BAR RND 16mm]
14	N412	3	BRACE DIAG SSV RD BAR .63X2.08	[BAR RND 16mm]
15	N413	3	BRACE DIAG SSV RD BAR .63X2.09	[BAR RND 16mm]
16	N414	3	BRACE DIAG SSV RD BAR .63X2.10	[BAR RND 16mm]
17	N415	3	BRACE DIAG SSV RD BAR .63X2.12	[BAR RND 16mm]
18	N416	3	BRACE DIAG SSV RD BAR .63X2.13	[BAR RND 16mm]
19	N417	3	BRACE DIAG SSV RD BAR .63X2.15	[BAR RND 16mm]
20	N418	3	BRACE DIAG SSV RD BAR .63X2.16	[BAR RND 16mm]
21	N419	3	BRACE DIAG SSV RD BAR .63X2.17	[BAR RND 16mm]
22	N420	3	BRACE DIAG SSV RD BAR .63X2.19	[BAR RND 16mm]
23	N421	3	BRACE DIAG SSV RD BAR .63X2.20	[BAR RND 16mm]
24	N4B	3	BRACE H SSV RD BAR .63X1.99'	[BAR RND 16mm]
25	210008GA	72	BOLT ASSY 3/8 X 1-1/2 HCS G5	[M10x38]
26	210032GA	12	BOLT ASSY 5/8 X 2-1/4 HSB A325	[M16x57]

FILE NO.

REVISIONS				
REV.	DESCRIPTION	DWN	CHK	APP
4	REDRAWN	JHY	JDM	HA
DATE: Aug/9/2012				



PO BOX 5999
PEORIA, IL 61601-5999
TOLL FREE 800-727-ROHN

THIS DRAWING IS THE PROPERTY OF ROHN. IT IS NOT TO BE REPRODUCED, COPIED OR TRACED IN WHOLE OR IN PART WITHOUT OUR WRITTEN CONSENT.

SECTION ASSEMBLY
DETAILS FOR SSV 4N

DWN:	CHK'D:	DATE:
AED	RAM	Mar/17/1979
ENG'R:	SHEET #:	
TWS	1 OF 1	
PRJ. ENG'R:	PRJ. MANG'R:	
DRAWING NO:		REV:
A790110		4



SECTION ASSEMBLY P/N: 3WNB				
BILL OF MATERIAL				
ITEM	PART NO.	QTY	DESCRIPTION	
1	V58	1	SECTION 10' 3WNB STR WELDED	
2	210020GA	12	BOLT ASSY 1/2 X 2 HSB A325	[M13x51]

FLANGE PLATE

TOWER AXIS

FILE NO.				
REVISIONS				
REV.	DESCRIPTION	DWN	CHK	APP
3	REDRAWN DATE: 11/13/2012	JHY	CEJ	HA

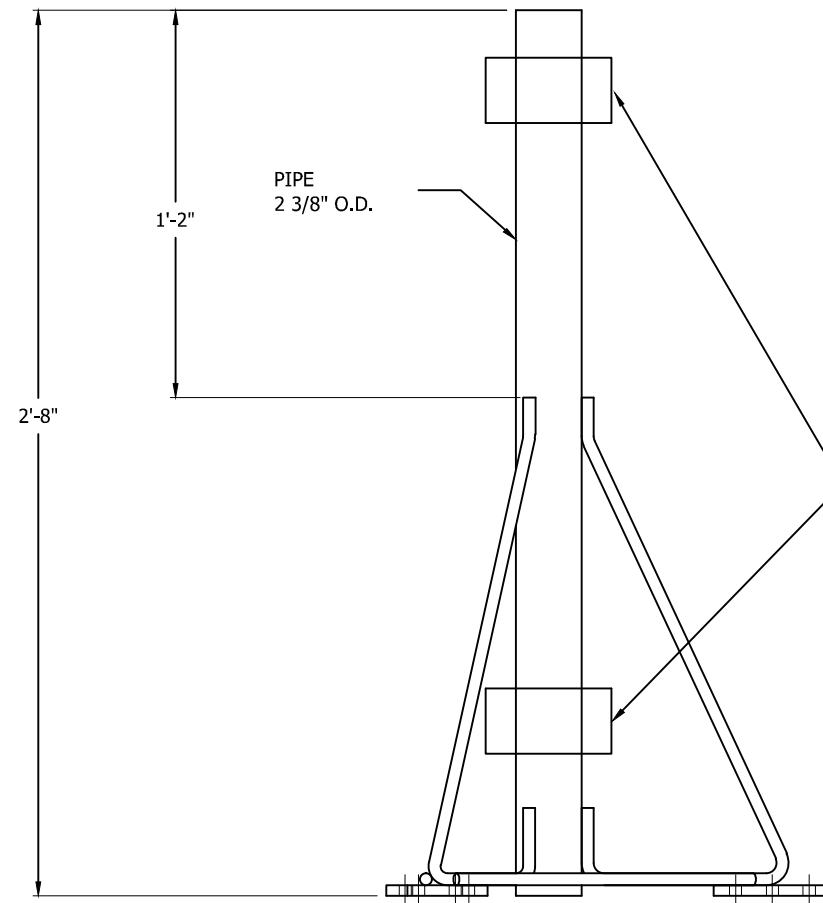
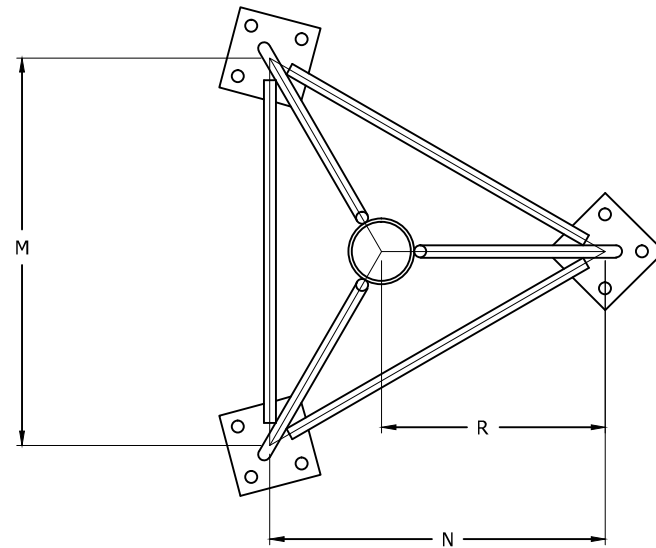


PO BOX 5999
PEORIA, IL 61601-5999
TOLL FREE 800-727-ROHN

THIS DRAWING IS THE PROPERTY OF ROHN. IT IS NOT TO BE REPRODUCED, COPIED OR TRACED IN WHOLE OR IN PART WITHOUT OUR WRITTEN CONSENT.

SECTION ASSEMBLY
DETAILS FOR SSV 3WNB

DWN: AED	CHK'D:	MWD	DATE: Mar/14/1979
ENG'R: TS	SHEET #: 1 OF 1		
PRJ. ENG'R:	PRJ. MANG'R:		
DRAWING NO: A790099			REV: 3



NOTE: DESIGN BASED ON THRUST OF 500# AT CLAMPING POSTIONS

TAPERED TOP ASSY BILL OF MATERIALS DETAIL

	TOWER SEC.				FLANGE PLATE	FLANGE BOLTS		
ASSY P/N	NUMBER	M	N	R	SIZE	QTY	SIZE	P/N
1TT	1W, 1WB, 2W	1'-2"	1'-0 1/8"	0'-8 1/16"	3 X 3 X 3/8	9	3/8 X 1-1/2	210008GA
3TT	2WST, 2WB, 3WN	1'-6"	1'-3 9/16"	0'-10 3/8"	3 X 3 X 3/8	9	3/8 X 1-1/2	210008GA
4TTN	3WNST, 3WNB, 4N	1'-10"	1'-7 1/16"	1'-0 11/16"	4 X 4 X 1/2	9	1/2 X 2	210020GA
5TTN	4NST, 4NA, 4WB, 4NC, 5N	2'-2"	1'-10 1/2"	1'-3"	4-1/2 X 4-1/2 X 5/8	9	5/8 X 2-1/4	210032GA
6TT	5NST, 5NA, 5NB, 5NC, 6N	2'-6"	2'-2"	1'-5 5/16"	4-1/2 X 4-1/2 X 5/8	9	5/8 X 2-1/4	210032GA

FILE NO.

REVISIONS

REV.	DESCRIPTION	DWN	CHK	APP
12	UPDATED TO NEW STANDARDS DATE: 07/29/11	JEC	KTL	DWG



PO BOX 5999
PEORIA, IL 61601-5999
TOLL FREE 800-727-ROHN

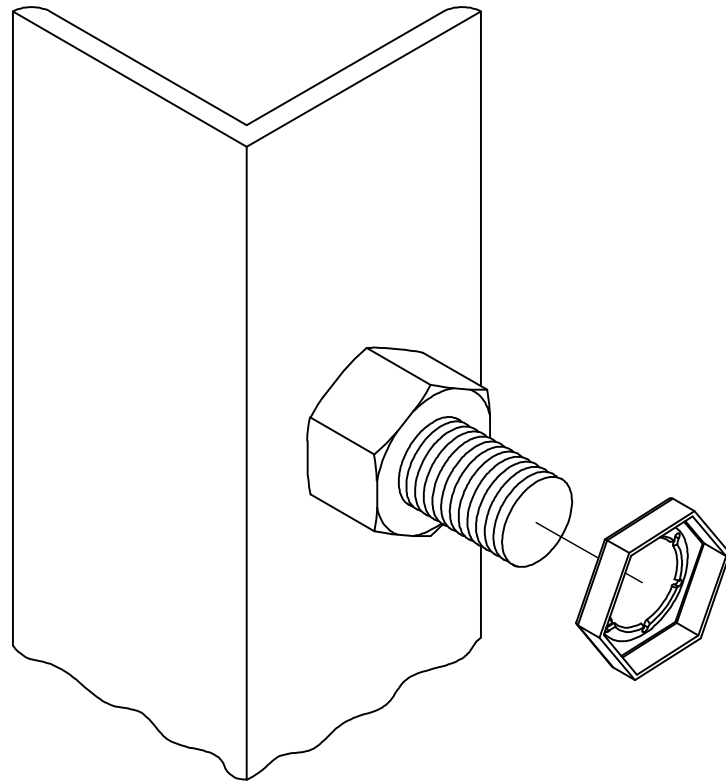
THIS DRAWING IS THE PROPERTY OF ROHN. IT IS NOT TO BE REPRODUCED, COPIED OR TRACED IN WHOLE OR IN PART WITHOUT OUR WRITTEN CONSENT.

TAPERED TOP ASSEMBLY

DWN:	CHK'D:	DATE:
MDI	OH	JAN/03/1967
ENG'R:	SHEET #:	
CW	1 OF 1	
DRAWING NO:	REV:	
SK670407	12	

1. UNLESS OTHERWISE SPECIFIED, ASSEMBLY BOLTS AND ANCHOR BOLTS ARE TO BE TIGHTENED TO A SNUG TIGHT CONDITION (MEMBERS IN FIRM CONTACT) AND MUST INCLUDE A NUT LOCKING DEVICE. NO MINIMUM BOLT TENSION OR TORQUE VALUES ARE REQUIRED. WHEN LOCK WASHERS ARE PROVIDED AS A NUT LOCKING DEVICE, REPLACE ANY DAMAGED WASHERS DUE TO OVER TIGHTENING.
2. WASHERS ARE TO BE INSTALLED OVER SLOTTED HOLES.

1. PAL NUTS ARE TO BE INSTALLED AFTER NUTS ARE TIGHT AND WITH EDGE LIP OUT (SEE PICTURE). PAL NUTS ARE NOT REQUIRED WHEN SELF-LOCKING NUTS OR LOCK WASHERS ARE PROVIDED.



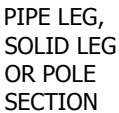
REVISIONS

REV.	DESCRIPTION	DWN	CHK	APP
7	CHANGE NOTATION. DATE: 01/11/12	JEC	JDM	HA



THIS DRAWING IS THE PROPERTY OF ROHN. IT IS NOT TO BE
REPRODUCED, COPIED OR TRACED IN WHOLE OR IN PART WITHOUT
OUR WRITTEN CONSENT.

DWN: OH	CHK'D: GHB	DATE: 07/05/79
ENG'R: TWS	SHEET #: 1 OF 1	
DRAWING NO: A790135		REV: 7




(INSTALL WARNING SIGN IN BOTTOM 5' OF STRUCTURE)

STEP BOLTS TO BE CLIMBED BY A COMPETENT CLIMBER ONLY. 100% FALL PROTECTION IS REQUIRED AT ALL TIMES. CLIMBING STEP BOLTS IS DANGEROUS AND CAN CAUSE SERIOUS INJURY OR DEATH. PERFORM AN INSPECTION PRIOR TO CLIMBING TO IDENTIFY POTENTIAL CLIMBING HAZARDS.

STEP BOLTS SPACING AT SECTION JOINTS MAY NOT BE CONSISTENT WITH THE SPACING THROUGHOUT THE STRUCTURE. FLANGE PLATES AT SECTION JOINTS, GUYS, ATTACHMENTS TO LEGS, ETC. MAY BE AN OBSTRUCTION TO CONTINUOUS CLIMBING.

1. STEP BOLTS MUST BE TURNED UNTIL THE FRONT EDGE OF THE BOLT TOUCHES THE SIDE OF THE STRUCTURE.
2. STEP BOLTS ARE SUPPLIED FOR CONSTRUCTION PURPOSES AND ARE NOT INTENDED FOR USE BY UNQUALIFIED PERSONNEL.
3. DEVIATION FROM PERFECT ALIGNMENT IS ACCEPTABLE. SOME SPACING INCONSISTENCY MAY EXIST AT SPLICE LOCATIONS.
4. IF STEP BOLTS ARE BELIEVED TO PRESENT SAFETY PROBLEMS TO PERSONNEL, DO NOT INSTALL THE STEP BOLTS.

FILE NO.					Standard-SSV				
REVISIONS									
REV.	DESCRIPTION	DWN	CHK	APP					
1	DATE: Aug/21/2005								
2	DATE: Aug/21/2005								
3	UPDATED DATE: Aug/22/2005	JDM	HA	HA					
4	ADDED WARNING SIGN DATE: Mar/15/2006	JDM	JWS	H.A					
5	REVISED GENERAL NOTES DATE: Feb/28/2007	JDM	M.F	H.A					
DWG REFERENCE									
 <p>ROHN PRODUCTS</p> <p>6718 WEST PLANK ROAD PEORIA, IL 61604 TOLL FREE 800-727-ROHN</p>									
<p>THIS DRAWING IS THE PROPERTY OF ROHN. IT IS NOT TO BE REPRODUCED, COPIED OR TRACED IN WHOLE OR IN PART WITHOUT OUR WRITTEN CONSENT.</p>									
<p>STEP BOLT INSTALLATION DETAIL</p>									
DWN:		CHK'D:		DATE:					
OH		TWS		Apr/16/1974					
ENG'R:									
CW									
DRAWING NO:								REV:	
B651264								5	