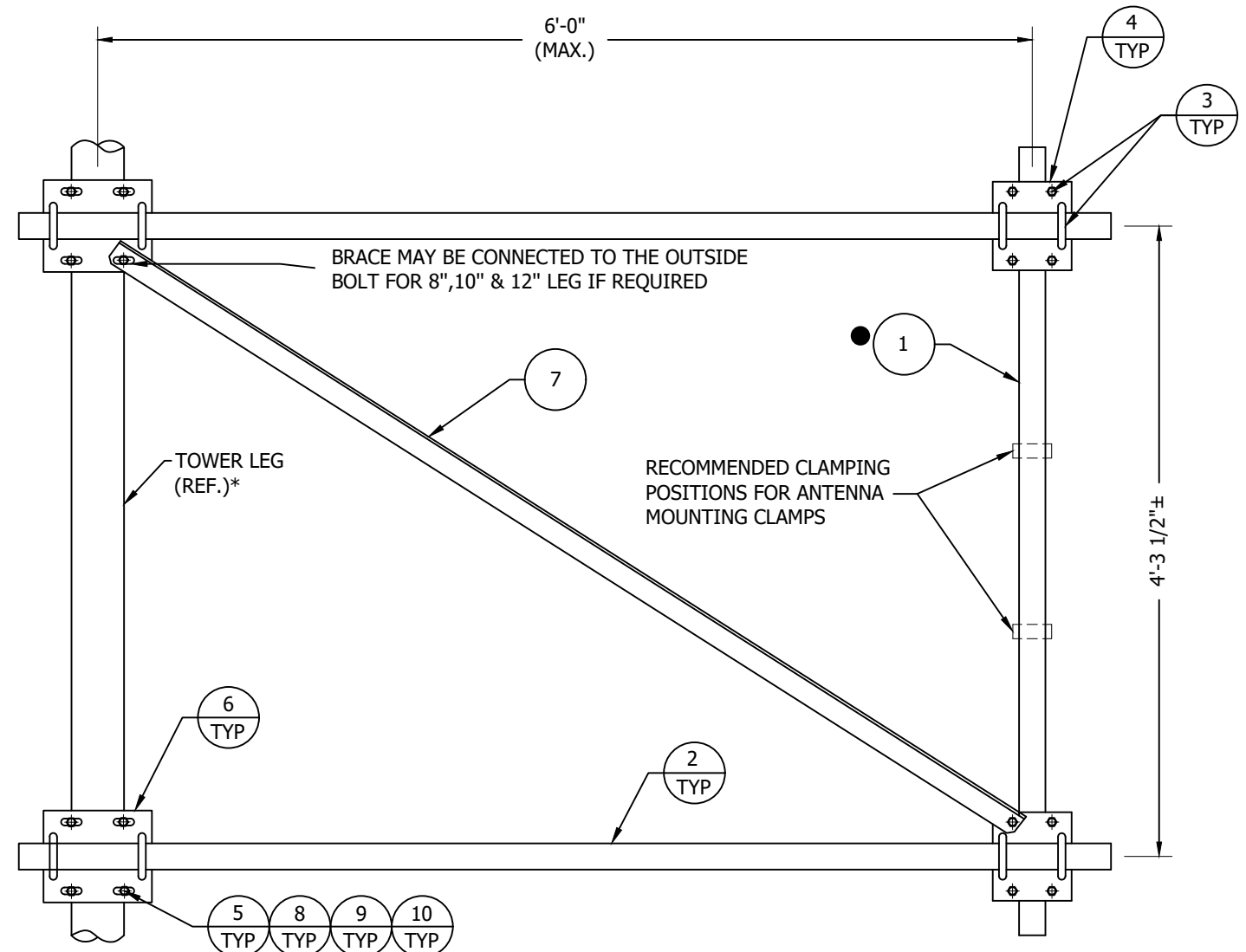


FILE NO. Standard-SSV				
REVISIONS				
REV.	DESCRIPTION	DWN	CHK	APP
1	REDRAWN INTO AUTOCAD FORMAT	M.F	JWS	H.A
DATE: Jan/05/2007				

BILL OF MATERIAL				
ITEM	QUAN.	PART NO.	DESCRIPTION	DWG NO.
1	1	KH275	MOUNTING PIPE 2" STD X 5' LG.	B770160
2	2	KH1304	MOUNTING PIPE 2" STD X 8' LG.	B770160
3	12	JR83A	U-BOLT ASSY.	B651028
4	2	KY14	CONNECTION PLATE	C740106
5	4	SEE CHART	U-BOLT	B651028
6	2	SEE CHART	MOUNTING PLATE	B810894
7	1	KH1616	BRACE L 1-1/2X1/8"	B810895
8	8	250011G	9/16" WASHERS FOR U-BOLT	N/A
9	8	230013	1/2" NUT FOR U-BOLT	N/A
10	8	230011	1/2" PAL NUT	N/A



ASSY P/N	PIPE LEG (O.D.)	MTG PLATE (QTY-2)	U-BOLT (QTY-4 EA.)
SA624A	2.375 - 4.5	KH1614	JR83 JR84 JR89 JR88 JR85
SA656A	5.56-6.63	KH1615	JR86 JR87
SA68A	8.75	KH1716	JR90S
SA610A	10.75	KH1960	JR110
SA612A	12.75	KH1961	JR120

- NOTES**
1. WASHERS ARE PROVIDED FOR ALL SLOTTED HOLES.
  2. THIS SIDE ARM IS DESIGNED FOR AN ALLOWABLE ANTENNA LOADING OF 300# THRUST.
  3. SIDE ARM MOUNTING PLATES MUST BE LOCATED AS CLOSE AS POSSIBLE TO LEG-BRACE INTERSECTION.
  4. SIDE ARM ORIENTATION MAY VARY FROM TOWER AXIS.
  - \* 5. CHECK TOWER ASSEMBLY DRAWING FOR LEG SIZE TO DETERMINE THE SIDE ARM ASSEMBLY NUMBER REQUIRED.
  - 6. IF 8' (P/N: KH2229) MOUNTING PIPES ARE NEEDED INSTEAD OF 5' MOUNTING PIPES (P/N: KH275) ADD AN '8' TO THE END OF THE PART NUMBER. (EXAMPLE: SA625PL8)
  7. NUMBERS SHOWN IN BALLOONS DENOTES ITEM NUMBER IN BILL OF MATERIAL.

DWG REFERENCE



6718 WEST PLANK ROAD  
PEORIA, IL 61604  
TOLL FREE 800-727-ROHN

THIS DRAWING IS THE PROPERTY OF ROHN. IT IS NOT TO BE REPRODUCED, COPIED OR TRACED IN WHOLE OR IN PART WITHOUT OUR WRITTEN CONSENT.

**ANTENNA MOUNT  
6' SIDE ARM ASSY STR OR TAPERED**

DWN: JDM	CHK'D: KTL	DATE: Mar/29/1999
ENGR: TWS		
DRAWING NO: C990868	REV: 1	

Jan/19/2007 10:02:29 AM

lrection\