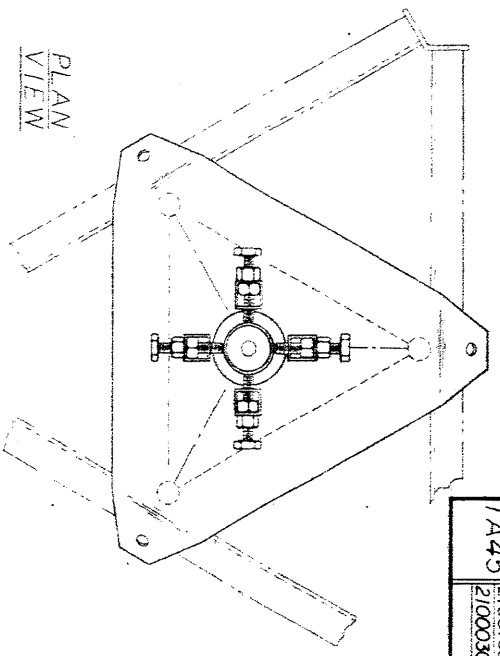


DESIGN NOTE
 THESE TOP DISH MOUNT ASSEMBLIES ARE DESIGNED TO BE MOUNTED ON 456 SINGLE BRACED SECTIONS ONLY



PLAN VIEW

TORQUE ARM BILL OF MATERIALS

ASSY NO.	PART NO.	QUAN.	DESCRIPTION	DRAWING NO.
TA45	1	1	TORQUE ARM	B760796
	2100166A	3 (each)	7/16 X 2-1/2" BOLT ASSEMBLY	C770404
	2100036A	3 (each)	5/16 X 2-3/8" BOLT ASSEMBLY	C770404

- GENERAL NOTES**
- THE TOP DISH MOUNTS AND THE TORQUE ARMS ARE SEPARATE UNITS AND MAY BE USED IN CONJUNCTION WITH EACH OTHER, AS SHOWN, OR AS SEPARATE UNITS. THE TORQUE ARM MAY BE INSTALLED AT THE LEVEL OF ANY TOWER JOINT, WHEN THE TORQUE ARM IS INSTALLED AS SHOWN, THE GUYS ARE TO BE ATTACHED TO THE TORQUE ARM ONLY.
 - ALL FABRICATION DRAWINGS REFERENCED, ARE FOR SHOP USE ONLY.
 - PAL NUTS ARE PROVIDED WITH ALL U-BOLT AND BOLT ASSEMBLIES.

*** DESIGN NOTE**
 THIS ANTENNA MOUNT IS DESIGNED IN ACCORDANCE WITH ANS.I. A58.1 "MIN. DESIGN LOADS FOR BUILDINGS & OTHER STRUCTURES EXPOSED TO MPH. FOR A MAX. 8' DIA. SOLID GRID OR MESH DISH (MAX. PROJ. AREA = 60 SQ. FT.)

5/8 X 4" BOLT (PT. NO. 220C496) W/ 2-NUTS (PT. NO. 230018) (TYP) PROJECTION ON ALL CLAMP BOLTS MUST BE EQUAL TO PROVIDE BEST POSSIBLE CLAMPING POSITION.

TOP MOUNTING PLATE (PT. NO. KY1181)

7/16 X 2-1/2" BOLT ASSY (TYP) (PT. NO. 2100166A)

5/16 X 2-3/8" BOLT ASSY (TYP) (PT. NO. 2100036A)

TORQUE ARM ASSEMBLY (IF REQUIRED)

BOTTOM MOUNTING PLATE (PT. NO. KY1176) U-BOLT ASSEMBLY (PT. NO. JRG66A) (TYP.)

45TDMKD (MOUNT ONLY - LESS PIPE)

PT. NO.	QUAN.	DESCRIPTION	DWG. NO.
KY1181	1	TOP MOUNTING PLATE	C850312
KY1176	1	BOTTOM MOUNTING PLATE	C850325
JRG66A	3	U-BOLT ASSEMBLY	B651028
2200496	8	5/8 X 4" BOLT (FULLY THREADED)	C770404
2100166A	3	7/16 X 2-1/2" BOLT ASSEMBLY	C770404
230018	16	5/8" HVY. HEX. NUT	N/A
2100036A	3	5/16 X 2-3/8" BOLT ASSEMBLY	C770404

DISH MOUNT BILL OF MATERIALS

ASSY NO.	PART NO.	QUAN.	DESCRIPTION	DRAWING NO.
45TDM4S3KD	KY1181	1	MTG. PIPE 2" STD. X 7'-0" LG.	B770160
	KY1176	1	TOP MOUNTING PLATE	C850312
	JRG66A	3	U-BOLT ASSEMBLY	C850325
	2200496	8	5/8 X 4" BOLT (FULLY THREADED)	B651028
	2100166A	3	7/16 X 2-1/2" BOLT ASSEMBLY	C770404
	230018	16	5/8" HVY. HEX. NUT	N/A
	2100036A	3	5/16 X 2-3/8" BOLT ASSEMBLY	C770404
	KY1181	1	TOP MOUNTING PLATE	C850312
	KY1176	1	BOTTOM MOUNTING PLATE	C850325
	JRG66A	3	U-BOLT ASSEMBLY	B651028
45TDM3S3KD	KY1181	1	MTG. PIPE 3" STD. X 7'-0" LG.	B770160
	KY1176	1	TOP MOUNTING PLATE	C850312
	JRG66A	3	U-BOLT ASSEMBLY	C850325
	2200496	8	5/8 X 4" BOLT (FULLY THREADED)	C770404
	2100166A	3	7/16 X 2-1/2" BOLT ASSEMBLY	C770404
	230018	16	5/8" HVY. HEX. NUT	N/A
	2100036A	3	5/16 X 2-3/8" BOLT ASSEMBLY	C770404
	KY1181	1	TOP MOUNTING PLATE	C850312
	KY1176	1	BOTTOM MOUNTING PLATE	C850325
	JRG66A	3	U-BOLT ASSEMBLY	B651028
45TDM25S3KD	KY1181	1	MTG. PIPE 3" STD. X 7'-0" LG.	B770160
	KY1176	1	TOP MOUNTING PLATE	C850312
	JRG66A	3	U-BOLT ASSEMBLY	C850325
	2200496	8	5/8 X 4" BOLT (FULLY THREADED)	C770404
	2100166A	3	7/16 X 2-1/2" BOLT ASSEMBLY	C770404
	230018	16	5/8" HVY. HEX. NUT	N/A
	2100036A	3	5/16 X 2-3/8" BOLT ASSEMBLY	C770404
	KY1181	1	TOP MOUNTING PLATE	C850312
	KY1176	1	BOTTOM MOUNTING PLATE	C850325
	JRG66A	3	U-BOLT ASSEMBLY	B651028
45TDM2S3KD	KY1181	1	MTG. PIPE 2" STD. X 7'-0" LG.	B770160
	KY1176	1	TOP MOUNTING PLATE	C850312
	JRG66A	3	U-BOLT ASSEMBLY	C850325
	2200496	8	5/8 X 4" BOLT (FULLY THREADED)	B651028
	2100166A	3	7/16 X 2-1/2" BOLT ASSEMBLY	C770404
	230018	16	5/8" HVY. HEX. NUT	N/A
	2100036A	3	5/16 X 2-3/8" BOLT ASSEMBLY	C770404
	KY1181	1	TOP MOUNTING PLATE	C850312
	KY1176	1	BOTTOM MOUNTING PLATE	C850325
	JRG66A	3	U-BOLT ASSEMBLY	B651028

RI ADDED 45TDM4S3KD & REV'D BOLTS & TORQUE ARM
 MOUNT DISH ASSY TOP 456 KD
 UNR-Rohn
 Division of Lullco, Inc.

TOP DISH MOUNT & TORQUE ARM ASSY FOR TOWER MODEL NO. 456

Scale: NONE
 Date: 01-14-85
 Drawn by: GPW
 Checked by: KMK
 Approved by: KMK
 Date: 1-4-85

UNR-Rohn
 Division of Lullco, Inc.

850315 R1