

PDS-LC

Large Flat Panel Ceiling Mount

Product Features:

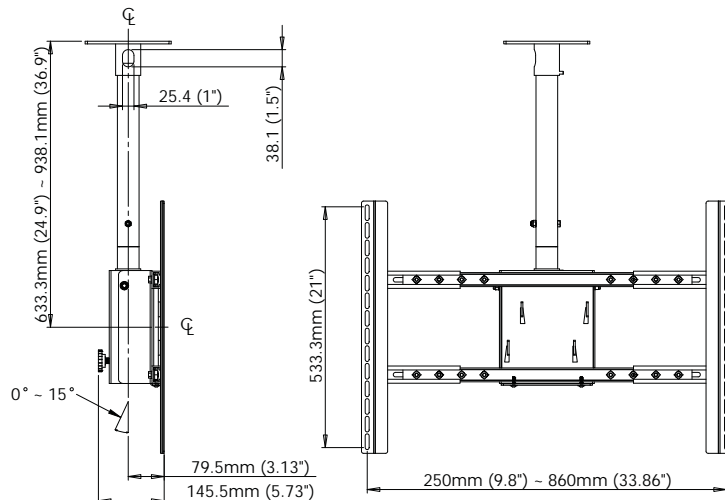
- Holds most 37" - 63" flat panels
- Maximum flat panel hole pattern - 860mm x 500mm
- Mast telescopes 23" - 35" from ceiling
- Rotates 360° / Adjustable 0° - 15° tilt
- Cable management through the center of the mast
- Load capacity - 180 lbs
- Silver powder coat finish
- Also available in black (PDS-LCB)

Product Specifications: *(for Architects & Engineers)*

The ceiling mount for the large flat panel display shall be the Video Mount Products (VMP) PDS-LC. The mount shall be primarily constructed of formed steel and shall incorporate nylon filled nuts and arc welds. The mount shall be an universal style mount capable of adjusting to the dimensions of a variety of popular 37" to 63" flat panel displays and not necessarily be model specific. The mount shall include a telescoping mast that adjusts from 23" to 35" from the ceiling. The adjustable mounting rails shall be capable of accommodating a maximum hole pattern of 860 mm wide and 500 mm tall. The mount shall be capable of tilting from 0° to +15° and swivel 360°. The load capacity shall be 180 lbs.

Video Mount Products

345 Log Canoe Circle
Stevensville, MD 21666
Toll Free: 877.281.2169
Telephone: 410.643.6390
Facsimile: 410.643.6615
www.videomount.com



VMP
VIDEO MOUNT PRODUCTS