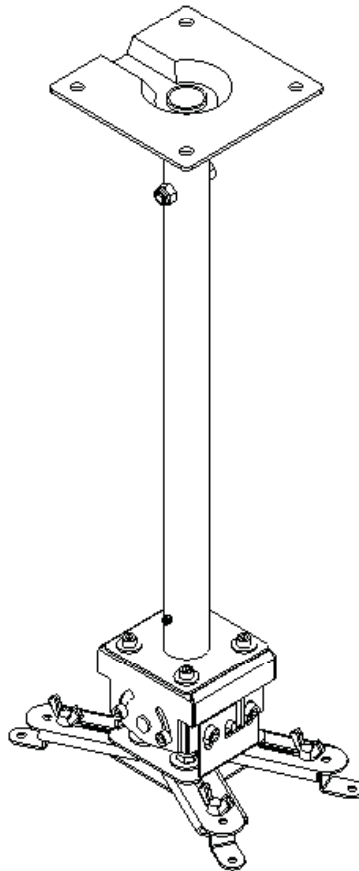


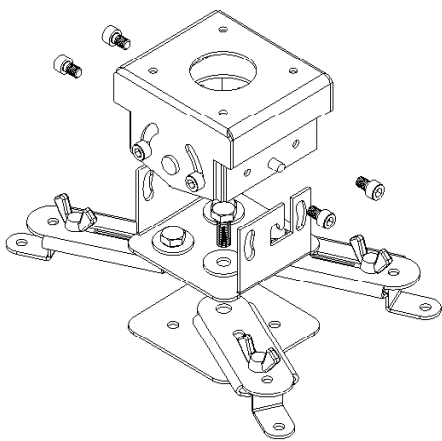


Instruction Sheet For:

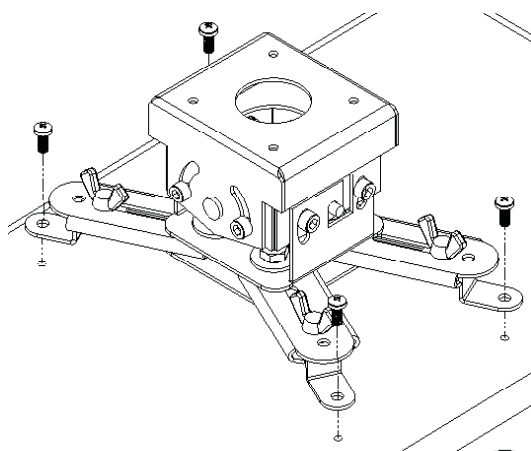
PM-3 & PM-3B



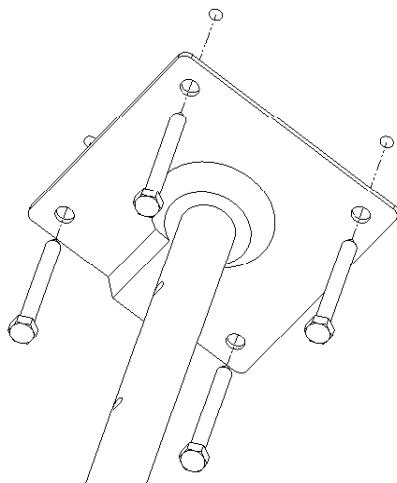
For more information, please contact us at:
325 Log Canoe Circle, Stevensville, Maryland 21666
(T) 410.643.6390 / (F) 410.643.6615
www.videomount.com



Step 2: Removing a leg off the projector mount



Step 3: Connecting the projector to the projector mount



*Step 4: Connecting the ceiling mounting bracket to the ceiling
(Lag screws are not included)*

Step 1

Before starting, lay out all parts to your mount and match them to the parts list provided. Verify that you have all your parts before attempting to assemble the mount.

Step 2

Determine how many mounting holes your projector has. If it has less than 4 then you should remove the excess leg(s). To do this remove the socket head screws from the sides of the projector mount which have the J shaped slot cut into them. Then lift off the top of the projector mount. Now remove a hex head screw for each leg you want to remove. Then pull out the excess leg(s). Reattach the top of the projector mount to the bottom.

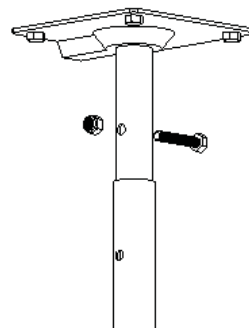
Step 3

Now connect the projector to the feet of the projector using the mounting screws provided with the mount. You may have to remove the wing screws in order to maneuver the feet into the correct position. If you do so remember to reattach them once you have done so.

If you are using the ceiling mast,

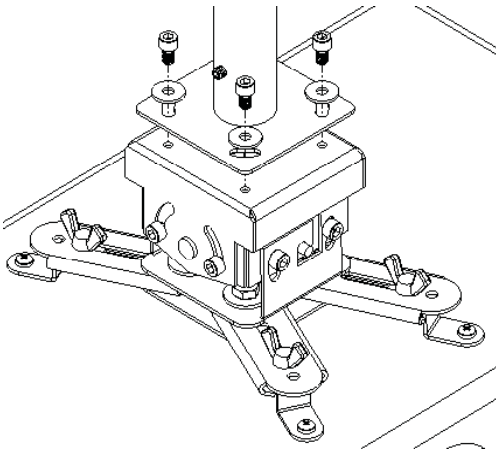
Step 4

Mark the ceiling or desired mounting surface in preparation of installation of ceiling mounting bracket. Pre-drill if necessary and mount the ceiling mounting bracket to the desired surface. **Warning: Please verify that your mounting surface will support the combined weight of your mount, mounting hardware, and monitor. Also verify that the mounting surface is safe to drill through. If in doubt, please contact a professional installer.**

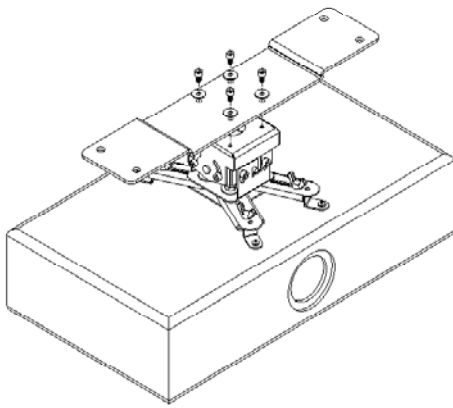


Step 5: Adjusting the drop length of the ceiling mounting bracket

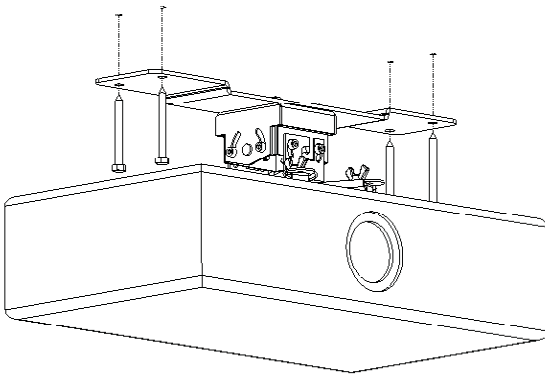
VMP
VIDEO MOUNT PRODUCTS



Step 6: Attaching the projector mount to the ceiling mount bracket



Step 7 : Attaching the projector mount to the flush mounting plate



Step 8 : Attaching the top holders to the adjustable stoppers



Step 5

To adjust the drop length of the mast, remove the 5/16" screw and slide the lower mast to line up with another set of holes in the upper mast. Then reinsert the 5/16" screw and retighten the nylon nut.

Step 6

To attach the mast to the projector mount use the socket head screws and washers and screw the top of the projector mount to the square plate.

If you are using the flush mounting plate,

Step 7

Attach the flush mounting plate to the top of the projector mount by using the socket head screw and washers.

Step 8

Mark the ceiling or desired mounting surface in preparation of installation of flush mounting plate. Pre-drill if necessary and mount the flush mounting plate to the desired surface. It may be necessary to remove the bottom half of the projector mount in order to get access to the flush mounting plate. Instructions on how to do so refer to step 2. **Warning: Please verify that your mounting surface will support the combined weight of your mount, mounting hardware, and monitor. Also verify that the mounting surface is safe to drill through. If in doubt, please contact a professional installer.**

Please verify that all nuts and screws are securely tightened.

Enjoy Your Mount!

WARNING: The installer of these products must verify that the mounting surface, ceiling or wall, will safely support the combined weight of all attached equipment and hardware. Video Mount Products will not be held liable for the improper use or installation of its products.