

REV	DESCRIPTION	DRAWN	CHK	APP

FILE NO.

REV	DESCRIPTION	DRAWN	CHK	APP

RSL TOWER KITS

HEIGHT	KIT NO.	SECTIONS	TOP HORIZ BRACE
100' (30)	RSL100A10	RA1-RA10	RSLH1A
90'	RSL90A19	RA1-RA9	RSLH1A
(27)	RSL90A20	RA2-RA10	RSLH2A
80'	RSL80A18	RA1-RA8	RSLH1A
(24)	RSL80A29	RA2-RA9	RSLH2A
70'	RSL70A30	RA3-RA10	RSLH3A
(21)	RSL70A17	RA1-RA7	RSLH1A
60'	RSL60A28	RA2-RA8	RSLH2A
(18)	RSL60A39	RA3-RA9	RSLH3A
50'	RSL50A40	RA4-RA10	RSLH4A
(15)	RSL50A16	RA1-RA6	RSLH1A
40'	RSL40A19	RA5-RA9	RSLH5A
(12)	RSL40A15	RA1-RA5	RSLH1A
30'	RSL30A20	RA6-RA10	RSLH6A
(9)	RSL30A14	RA1-RA4	RSLH1A
20'	RSL20A13	RA1-RA3	RSLH1A
(6)	RSL20A12	RA8-RA10	RSLH8A
	RSL20A90	RA9-RA10	RSLH9A

RSL GENERAL NOTES

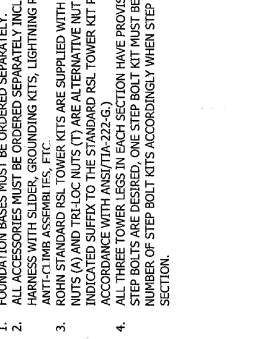
- DIMENSIONS INDICATED FOR HEIGHTS, FACE WIDTHS AND MEMBER LENGTHS ARE NOMINAL AND MAY VARY WITH THE BASE REQUEST.
- ALL DIMENSIONS IN PARENTHESES ARE IN METERS, UNLESS OTHERWISE NOTED.
- MATERIAL SPECIFICATIONS: LEGS, 65 KSI (450 MPa); ANGLES, 50 KSI (350 MPa); BASE PLATES, 50 KSI (350 MPa); 3/8" (10 mm) DIA. BRACE BOLTS, 65-5/8" (16 mm) DIA. LEG SPLICE BOLTS, A325. ALL MATERIAL GALVANIZED AFTER FABRICATION IN ACCORDANCE WITH ANSIT/TA-222-G.
- DESIGNS ASSUME MAINTENANCE AND INSPECTION WILL BE PERFORMED OVER THE LIFE OF THE STRUCTURE IN ACCORDANCE WITH ANSIT/TA-222-G. ALL TOWERS SHOULD BE THOROUGHLY INSPECTED BY QUALIFIED PERSONNEL AND RE-MARKED AS REQUIRED WITH APPROPRIATE DANGER AND ANTI-CRIMP LABELS AT LEAST TWICE A YEAR TO ENSURE SAFETY AND PROPER PERFORMANCE.
- TOWER KITS CONFORM TO BOTH CLASS A AND CLASS 9 ANSIT/TA-222-G CLIMBING FACILITIES WHEN STEP BOLTS ARE PROVIDED WITH A SAFETY CLIMB DEVICE.
- FOUNDATIONS MUST BE DESIGNED FOR THE CONDITIONS EXISTING AT A SITE. THE ADEQUACY OF STANDARD FOUNDATIONS MUST BE DETERMINED PRIOR TO INSTALLATION.

RSL ASSEMBLY NOTES

- INSTALLATION AND DISMANTLING MUST BE PERFORMED BY QUALIFIED AND EXPERIENCED PERSONNEL AND BE IN CONFORMANCE WITH ANSIT/TA-222-G AND ANSIT/TA-1019-A.
- DO NOT INSTALL OR DISMANTLE STRUCTURES WITHIN FALLING DISTANCE OF ELECTRICAL AND/OR TELEPHONE LINES WITHOUT TAKING SPECIAL PRECAUTIONS IN ACCORDANCE WITH THE APPROPRIATE UTILITY.
- ALL MEMBERS ARE STAMPED WITH A PART NUMBER. ALL LEGS MUST BE INSTALLED WITH THE LEG PART NUMBER AT THE BOTTOM OF THE SECTION FOR PROPER FIT UP. LEG SPLICE HARDWARE IS INCLUDED IN THE SECTION KIT FOR THE UPPER SECTION. ALL BRACES FOR A GIVEN SECTION ARE OF THE SAME LENGTH TO A SNUG TIGHT CONDITION AS A MINIMUM (MEMBERS IN FIRM CONTACT) AND MUST INCLUDE A NUT LOCKING DEVICES OR SELF-LOCKING NUT (INCLUDED WITH TOWER KIT). NO MINIMUM BOLT TENSION OR TORQUE VALUES ARE REQUIRED. NO FIELD WELDING IS REQUIRED. WHEN LOCK WASHERS ARE USED AS A NUT LOCKING DEVICE, REPLACE ANY DAMAGED WASHERS DUE TO OVER-TIGHTENING. INSTALLATION MUST BE GROUNDED IN ACCORDANCE WITH LOCAL AND NATIONAL CODES. ANSIT/TA-222-G REQUIRES THAT THE RESISTANCE TO GROUND MUST NOT EXCEED 10 OHMS. ADDITIONAL GROUNDING MAY BE REQUIRED IN ADDITION TO THE ROHN STANDARD GROUNDING KIT AVAILABLE AS AN OPTION FOR THE RSL TOWER DEPENDING ON THE SOIL CONDITIONS AT A SITE.
- INSTALLATION MUST BE IN CONFORMANCE WITH LOCAL, STATE AND FEDERAL REQUIREMENTS FOR OBSTRUCTION MARKING AND LIGHTING.
- WARNING PLATE PART NUMBER AWKCS PROVIDED WITH AN RSL TOWER KIT MUST BE INSTALLED IN A HIGHLY VISIBLE LOCATION AT THE BASE OF THE TOWER.

RSL ORDERING INFORMATION

- FOUNDATION BASES MUST BE ORDERED SEPARATELY.
- ALL ACCESSORIES MUST BE ORDERED SEPARATELY INCLUDING STEP BOLT KITS, SAFETY CLIMB SYSTEMS, CLIMBING HARNESS WITH SLIDER, GROUNDING KITS, LIGHTNING RODS, TOP PLATE, TOP MAST, MOUNTING KITS, W/G BRACKETS, ANTI-CRIMP ASSEMBLIES, ETC.
- ROHN STANDARD RSL TOWER KITS ARE SUPPLIED WITH LOCK WASHERS AS NUT LOCKING DEVICES. PAL NUTS (P), ANCO NUTS (A) AND TRI-LOC NUTS (T) ARE ALTERNATIVE NUT LOCKING DEVICES THAT MAY BE OBTAINED BY ADDING THE INDICATED SUFFIX TO THE STANDARD RSL TOWER KIT PART NUMBER. (NOTE: NUT LOCKING DEVICES ARE REQUIRED IN ACCORDANCE WITH ANSIT/TA-222-G.)
- ALL RSL TOWER LEGS IN EACH SECTION HAVE PROVISION TO INSTALL STEP BOLTS AND A SAFETY CLIMB SYSTEM. WHEN THE RSL TOWER LEGS ARE ORDERED FOR A SECTION OF THE TOWER, PLEASE SPECIFY THE NUMBER OF STEP BOLT KITS ACCORDINGLY WHEN STEP BOLTS ARE DESIRED ON MORE THAN ONE TOWER LEG OF A SECTION.



ROHN PRODUCTS
 PO BOX 5999
 PEORIA, IL 61601-5999
 TOLL FREE 800-777-ROHN

THIS DRAWING IS THE PROPERTY OF ROHN. IT IS LOANED TO YOU FOR YOUR USE ONLY. IT IS NOT TO BE REPRODUCED, COPIED, OR TRANSMITTED IN ANY MANNER WITHOUT THE WRITTEN CONSENT OF ROHN.

RSL TOWER
 ASSEMBLY DRAWING
 ANGLE BRACING

DRAWN: ZAW CHKD: JDM DATE: 08/09/12
 ENGR: HA SHEET #: 1 OF 1
 PROJ ENGR: OH PROJ MGR:

DRAWING NO: RSLA-01-A1 REV: 0

SECTION P/N	LENGTH	LEGS	BRACES	FACE WIDTH
RA1	(3)	RSL-L-1 (U 2 3/4" X 3/16") (U 70 X 4.8 mm)	RSL-D-1A (L1 1/4 X 1/8) (32 X 3.2 mm)	21" (550 mm)
RA2	(3)	RSL-L-2 (U 2 3/4" X 3/16") (U 70 X 4.8 mm)	RSL-D-2A (L1 1/4 X 1/8) (32 X 3.2 mm)	24" (625 mm)
RA3	(3)	RSL-L-3 (U 2 3/4" X 3/16") (U 70 X 4.8 mm)	RSL-D-3A (L1 1/4 X 1/8) (32 X 3.2 mm)	27" (700 mm)
RA4	(3)	RSL-L-4 (U 2 3/4" X 3/16") (U 70 X 4.8 mm)	RSL-D-4A (L1 1/4 X 1/8) (32 X 3.2 mm)	30" (775 mm)
RA5	(3)	RSL-L-5 (U 2 3/4" X 3/16") (U 70 X 4.8 mm)	RSL-D-5A (L1 1/4 X 1/8) (32 X 3.2 mm)	32" (850 mm)
RA6	(3)	RSL-L-6 (U 2 3/4" X 3/16") (U 70 X 4.8 mm)	RSL-D-6A (L1 1/4 X 1/8) (32 X 3.2 mm)	36" (925 mm)
RA7	(3)	RSL-L-7 (U 2 3/4" X 3/16") (U 70 X 4.8 mm)	RSL-D-7A (L1 1/4 X 1/8) (32 X 3.2 mm)	39" (1000 mm)
RA8	(3)	RSL-L-8 (U 2 3/4" X 1/4") (U 70 X 6.4 mm)	RSL-D-8A (L1 1/2 X 1/8) (38 X 3.2 mm)	42" (1075 mm)
RA9	(3)	RSL-L-9 (U 2 3/4" X 1/4") (U 70 X 6.4 mm)	RSL-D-9A (L1 1/2 X 1/8) (38 X 3.2 mm)	45" (1150 mm)
RA10	(3)	RSL-L-10 (U 2 3/4" X 1/4") (U 70 X 6.4 mm)	RSL-D-10A (L1 1/2 X 1/8) (38 X 3.2 mm)	48" (1225 mm)
				51" (1300 mm)

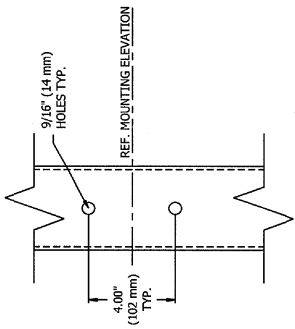
FILE NO.

REVISIONS		
REV	DESCRIPTION	DWN CHK APP

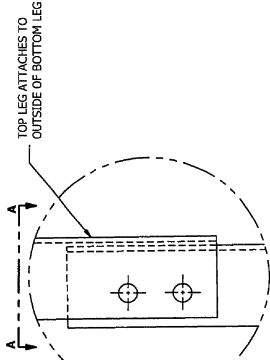
SECTION	NOMINAL BRACE LENGTH
RA1	38" (965 mm)
RA2	40" (1016 mm)
RA3	42" (1067 mm)
RA4	44" (1118 mm)
RA5	46" (1168 mm)
RA6	48" (1219 mm)
RA7	50" (1270 mm)
RA8	52" (1321 mm)
RA9	55" (1397 mm)
RA10	57" (1448 mm)

REFER TO SHEET 2 FOR SECTION BILL OF MATERIALS

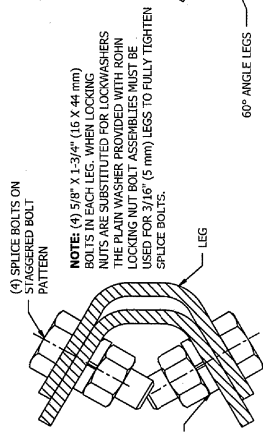
NOTE:
 NOMINAL METRIC EQUIVALENTS ARE GIVEN FOR REFERENCE ONLY AND SHALL NOT BE SUBSTITUTED FOR THE DESCRIBED SIZES UNLESS OTHERWISE APPROVED BY ROHN PRODUCTS. ALL DIMENSIONS IN PARENTHESES ARE IN METERS, UNLESS OTHERWISE NOTED.



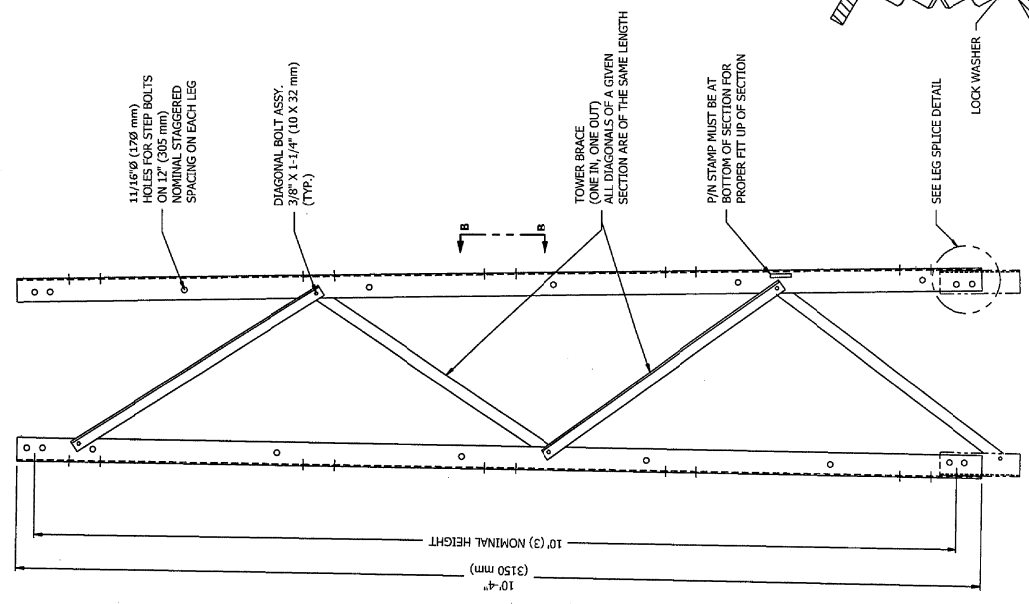
VIEW B-B
 ACCESSORY MOUNTING HOLES IN EACH LEG ARE LOCATED FOR NOMINAL MOUNTING ELEVATIONS AT 6" (150 mm), 3" (910 mm), 5" (120 mm), 7" (2130 mm), AND 9" (6" (2900mm)) FROM THE BOTTOM OF EACH SECTION.



LEG SPICE DETAIL

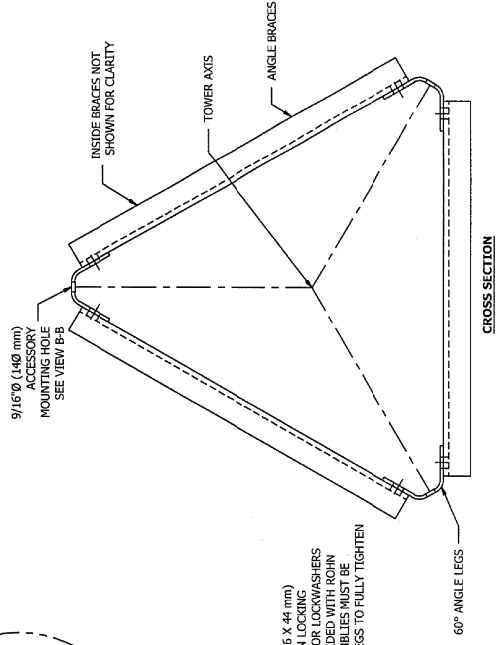


NOTE: (A) 5/8" X 1-3/4" (16 X 44 mm) BOLTS IN EACH LEG. WHEN LOCKING NUTS ARE SUBSTITUTED FOR LOCKWASHERS THE PLAIN WASHER PROVIDED WITH ROHN LOCKING NUT BOLT ASSEMBLIES MUST BE USED FOR 3/16" (5 mm) LEGS TO FULLY TIGHTEN SPICE BOLTS.



ELEVATION VIEW

VIEW A-A



CROSS SECTION



PO BOX 5999
 PEORIA, IL 61601-5999
 TOLL FREE 800-77-ROHN

THIS DRAWING IS THE PROPERTY OF ROHN. IT IS NOT TO BE REPRODUCED, COPIED OR TRANSMITTED IN ANY FORM OR BY ANY MEANS WITHOUT THE WRITTEN CONSENT OF ROHN.

RSL TOWER
 SECTION DETAILS
 ANGLE BRACING

DWN:	ZAW	CHKD:	DATE:	10/13/12
ENGR:	HA	SHEET #:	1 OF 2	
PRJ. ENGR:	OH	PRJ. MGR:		
DRAWING NO:	RSLA-01-A2			
REV:	0			

FILE NO.

REV#	DESCRIPTION	DWN	CHK	APP

SECTION BILL OF MATERIALS			
SECTION	PART NO.	QTY	DESCRIPTION
RA1	RSL-1	3	U 2.75"X.19"X10.33' HDG
	RSLD-1A	12	R1 ANGLE L1.25X.13X3.14'
	210005GALW	15	BOLT ASSY 3/8 X 1-1/4 G5
	210030GALW	12	BOLT ASSY 5/8 X 1-3/4 A325
RA2	RSL-2	3	U 2.75"X.19"X10.33' HDG
	RSLD-2A	12	R2 ANGLE L1.25X.13X3.28'
	210005GALW	15	BOLT ASSY 3/8 X 1-1/4 G5
	210030GALW	12	BOLT ASSY 5/8 X 1-3/4 A325
RA3	RSL-3	3	U 2.75"X.19"X10.33' HDG
	RSLD-3A	12	R3 ANGLE L1.25X.13X3.44'
	210005GALW	15	BOLT ASSY 3/8 X 1-1/4 G5
	210030GALW	12	BOLT ASSY 5/8 X 1-3/4 A325
RA4	RSL-4	3	U 2.75"X.19"X10.33' HDG
	RSLD-4A	12	R4 ANGLE L1.25X.13X3.61'
	210005GALW	15	BOLT ASSY 3/8 X 1-1/4 G5
	210030GALW	12	BOLT ASSY 5/8 X 1-3/4 A325
RA5	RSL-5	3	U 2.75"X.19"X10.33' HDG
	RSLD-5A	12	R5 ANGLE L1.25X.13X3.78'
	210005GALW	15	BOLT ASSY 3/8 X 1-1/4 G5
	210030GALW	12	BOLT ASSY 5/8 X 1-3/4 A325

SECTION BILL OF MATERIALS			
SECTION	PART NO.	QTY	DESCRIPTION
RA6	RSL-6	3	U 2.75"X.19"X10.33' HDG
	RSLD-6A	12	R6 ANGLE L1.25X.13X3.97'
	210005GALW	15	BOLT ASSY 3/8 X 1-1/4 G5
	210030GALW	12	BOLT ASSY 5/8 X 1-3/4 A325
RA7	RSL-7	3	U 2.75"X.19"X10.33' HDG
	RSLD-7A	12	R7 ANGLE L1.25X.13X4.16'
	210005GALW	15	BOLT ASSY 3/8 X 1-1/4 G5
	210030GALW	12	BOLT ASSY 5/8 X 1-3/4 A325
RA8	RSL-8	3	U 2.75"X.25"X10.33' HDG
	RSLD-8A	12	R8 ANGLE L1.5X.13X4.34'
	210005GALW	15	BOLT ASSY 3/8 X 1-1/4 G5
	210030GALW	12	BOLT ASSY 5/8 X 1-3/4 A325
RA9	RSL-9	3	U 2.75"X.25"X10.33' HDG
	RSLD-9A	12	R9 ANGLE L1.5X.13X4.52'
	210005GALW	15	BOLT ASSY 3/8 X 1-1/4 G5
	210030GALW	12	BOLT ASSY 5/8 X 1-3/4 A325
RA10	RSL-10	3	U 2.75"X.25"X10.33' HDG
	RSLD-10A	12	R10 ANGLE L1.5X.13X4.71'
	210005GALW	15	BOLT ASSY 3/8 X 1-1/4 G5
	210030GALW	12	BOLT ASSY 5/8 X 1-3/4 A325

NOTE:
 1. BOLT ASSYS IN B.O.M. ABOVE CONSIST OF BOLT, HEAVY HEX NUT, & SPRING LOCK WASHER.
 2. ADD SUFFIX A, P, OR T TO SECTION PART NUMBER FOR ANCO, PAL OR TRILOC NUT LOCKING DEVICE. EXAMPLE: RA1-A FOR ANCO.
 3. LEG PART NUMBERS ARE STAMPED AS 1,2,3,.....10. THIS COINCIDES WITH LEG PART NUMBERS RSL-1,RSL-2,.....RSL-10 NOTED IN BILL OF MATERIALS ABOVE.



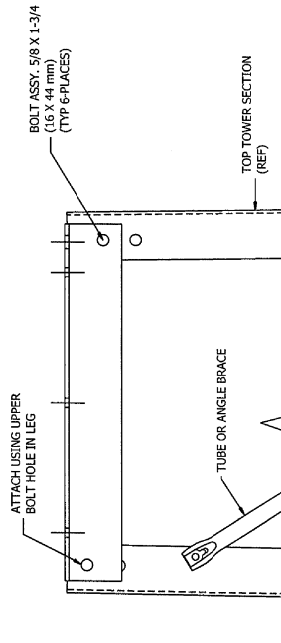
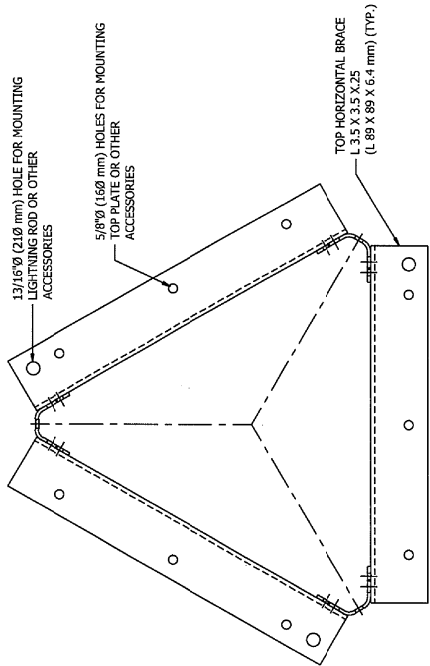
PO BOX 5599
 REBOK, IL 61801-5599
 TOLL FREE 800-727-4094

THIS DRAWING IS THE PROPERTY OF ROHN PRODUCTS. IT IS TO BE USED ONLY FOR THE PROJECT AND SITE SPECIFICALLY IDENTIFIED HEREON. IT IS NOT TO BE REPRODUCED OR COPIED IN ANY MANNER WITHOUT THE WRITTEN CONSENT OF ROHN PRODUCTS.

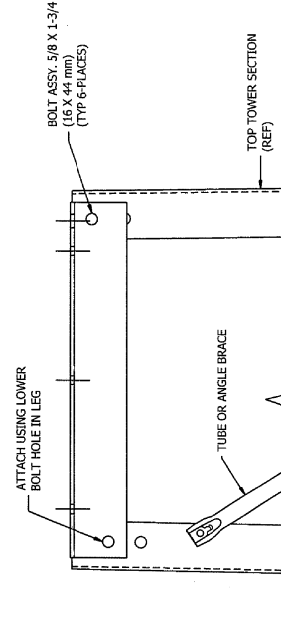
RSL TOWER
 SECTION DETAILS
 ANGLE BRACING

DWR:	ZAW	CHKD:	DATE:	10/13/12
ENGR:			SHEET #:	2 OF 2
PRI. ENGR:	OH		PRI. MANGER:	
DRAWING NO.:	RSLA-01-A2			
REV:	0			

- NOTE:**
1. BOLT ASSYS IN B.O.M. ABOVE CONSIST OF BOLT & TRI-LOC NUT.
 2. ADD SUFFIX A, P, OR T TO SECTION PART NUMBER FOR ANCO, PAL OR TRI-LOC NUT LOCKING DEVICE.
 3. NOMINAL METRIC EQUIVALENTS ARE GIVEN FOR REFERENCE ONLY AND SHALL NOT BE SUBSTITUTED FOR THE DESCRIBED SIZES UNLESS OTHERWISE APPROVED BY ROHN PRODUCTS.
 4. ALL DIMENSIONS IN PARENTHESES ARE IN METERS, UNLESS OTHERWISE NOTED.



(FOR P/N/S: RSLH1A - RSLH7A)



(FOR P/N/S: RSLH8A - RSLH9A)

ITEM		P/LN	QTY	DESCRIPTION
RSLH1A	(FOR NO. 1 RSL TOWER SECTION)	RSLH1	3	BRACE H R1 L3.5X.25X1.83'
RSLH2A	(FOR NO. 2 RSL TOWER SECTION)	210030GA-TLN	6	BOLT ASSY 5/8 X 1-3/4" A325
RSLH3A	(FOR NO. 3 RSL TOWER SECTION)	RSLH2	3	BRACE H R2 L3.5X.25X2.08'
RSLH4A	(FOR NO. 4 RSL TOWER SECTION)	210030GA-TLN	6	BOLT ASSY 5/8 X 1-3/4" A325
RSLH5A	(FOR NO. 5 RSL TOWER SECTION)	RSLH3	3	BRACE H R3 L3.5X.25X2.32'
RSLH6A	(FOR NO. 6 RSL TOWER SECTION)	210030GA-TLN	6	BOLT ASSY 5/8 X 1-3/4" A325
RSLH7A	(FOR NO. 7 RSL TOWER SECTION)	RSLH4	3	BRACE H R4 L3.5X.25X2.57'
RSLH8A	(FOR NO. 8 RSL TOWER SECTION)	210030GA-TLN	6	BOLT ASSY 5/8 X 1-3/4" A325
RSLH9A	(FOR NO. 9 RSL TOWER SECTION)	RSLH5	3	BRACE H R5 L3.5X.25X2.81'
		210030GA-TLN	6	BOLT ASSY 5/8 X 1-3/4" A325
		RSLH6	3	BRACE H R6 L3.5X.25X3.05'
		210030GA-TLN	6	BOLT ASSY 5/8 X 1-3/4" A325
		RSLH7	3	BRACE H R7 L3.5X.25X3.30'
		210030GA-TLN	6	BOLT ASSY 5/8 X 1-3/4" A325
		RSLH8	3	BRACE H R8 L3.5X.25X3.54'
		210030GA-TLN	6	BOLT ASSY 5/8 X 1-3/4" A325
		RSLH9	3	BRACE H R9 L3.5X.25X3.77'
		210030GA-TLN	6	BOLT ASSY 5/8 X 1-3/4" A325

TOP HORIZONTAL BRACE KIT BILL OF MATERIAL

FILE NO.

REV	DESCRIPTION	DWN	CHK	APP
7	REVISED 9/16" HOLES TO 5/8" HOLES	ZAW	JDR	HA
2				

DATE: 11/19/12

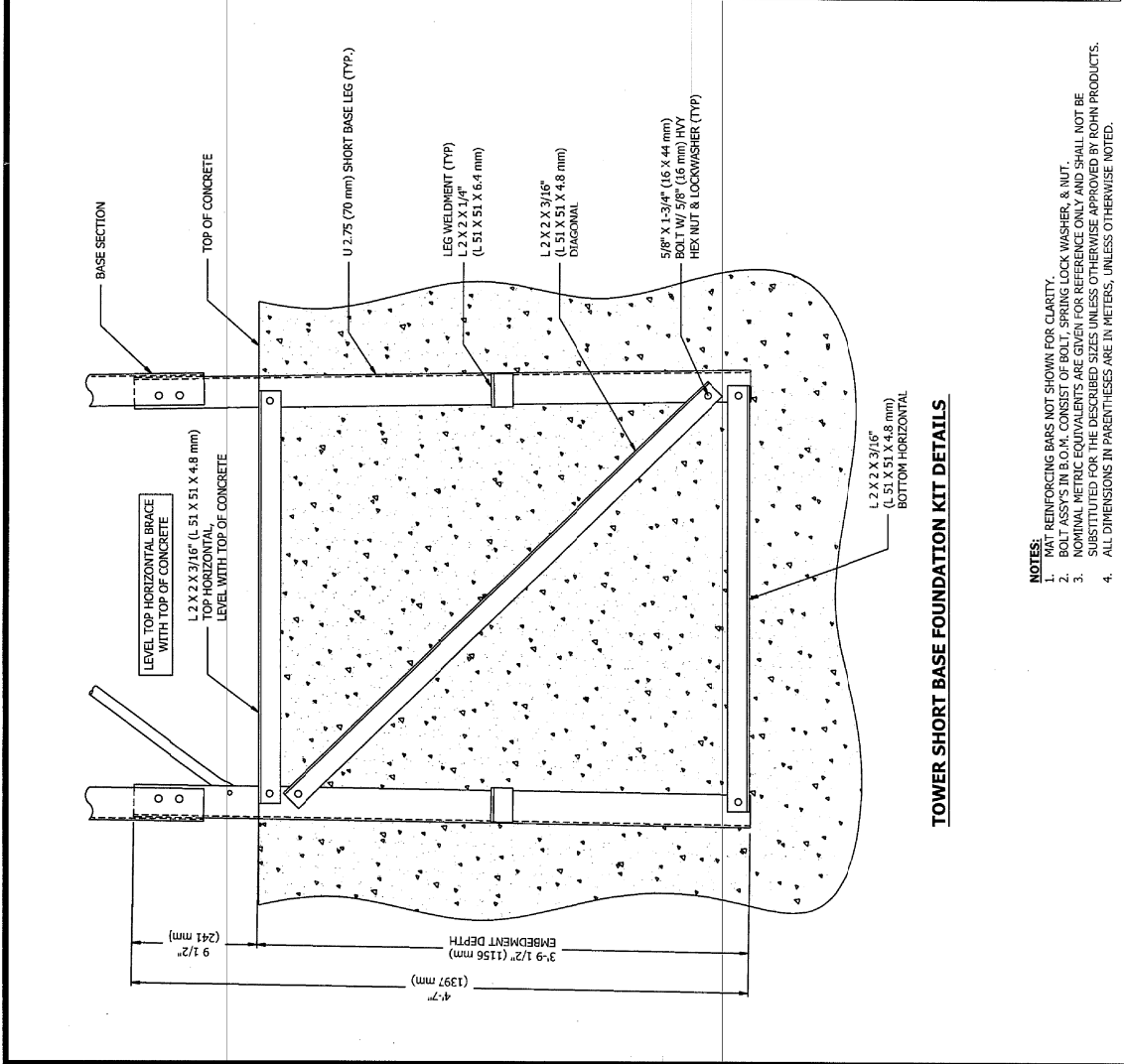
ROHN PRODUCTS
 PO BOX 5999
 PEORIA, IL 61601-5999
 TOLL FREE 800-727-ROHN

THIS DRAWING IS THE PROPERTY OF ROHN PRODUCTS. IT IS TO BE USED ONLY FOR THE PROJECT AND SITE SPECIFICALLY IDENTIFIED HEREON. IT IS NOT TO BE REPRODUCED OR TRANSMITTED IN ANY FORM OR BY ANY MEANS WITHOUT OUR WRITTEN CONSENT.

RSL TOWER
TOP HORIZONTAL BRACE KITS

DWN:	ZAW	CHK'D:	JDM	DATE:	08/07/12
ENGR:	HA	SHEET #:	1 OF 1	PRJ MGR:	
PRJ ENGR:	OH	DRAWING NO:	RSLHRZ	REV:	2

FILE NO.	DESCRIPTION	QTY.	PART NO.	DESCRIPTION
	LEG BASE U2.74"x19"x4.58" HDG	3	RSF-BW	
	TOP HORZ L2X2X.19X3.34" HDG	3	BK2-TOP	
	DIAG L2X2X.19X3.92" HDG	3	BK2-MID	
	BOT HORZ L2X2X.19X4.44" HDG	3	BK2-BOT	
	BOLT ASSY 5/8 X 1-3/4 HSB A325	18	210030GALW	
	LEG BASE U2.74"x19"x4.58" HDG	3	RSF-BW	
	TOP HORZ L2X2X.19X3.58" HDG	3	BK3-TOP	
	DIAG L2X2X.19X4.07" HDG	3	BK3-MID	
	BOT HORZ L2X2X.19X4.69" HDG	3	BK3-BOT	
	BOLT ASSY 5/8 X 1-3/4 HSB A325	18	210030GALW	
	LEG BASE U2.74"x19"x4.58" HDG	3	RSF-BW	
	TOP HORZ L2X2X.19X3.82" HDG	3	BK4-TOP	
	DIAG L2X2X.19X4.23" HDG	3	BK4-MID	
	BOT HORZ L2X2X.19X4.83" HDG	3	BK4-BOT	
	BOLT ASSY 5/8 X 1-3/4 HSB A325	18	210030GALW	
	LEG BASE U2.74"x19"x4.58" HDG	3	RSF-BW	
	TOP HORZ L2X2X.19X3.07" HDG	3	BK5-TOP	
	DIAG L2X2X.19X4.40" HDG	3	BK5-MID	
	BOT HORZ L2X2X.19X3.18" HDG	3	BK5-BOT	
	BOLT ASSY 5/8 X 1-3/4 HSB A325	18	210030GALW	
	LEG BASE U2.74"x19"x4.58" HDG	3	RSF-BW	
	TOP HORZ L2X2X.19X3.31" HDG	3	BK6-TOP	
	DIAG L2X2X.19X4.57" HDG	3	BK6-MID	
	BOT HORZ L2X2X.19X3.42" HDG	3	BK6-BOT	
	BOLT ASSY 5/8 X 1-3/4 HSB A325	18	210030GALW	
	LEG BASE U2.77"x25"x4.58" HDG	3	RSF-AW	
	TOP HORZ L2X2X.19X3.56" HDG	3	BK7-TOP	
	DIAG L2X2X.19X4.66" HDG	3	BK7-MID	
	BOT HORZ L2X2X.19X4.66" HDG	3	BK7-BOT	
	BOLT ASSY 5/8 X 1-3/4 HSB A325	18	210030GALW	
	LEG BASE U2.77"x25"x4.58" HDG	3	RSF-AW	
	TOP HORZ L2X2X.19X3.78" HDG	3	BK8-TOP	
	DIAG L2X2X.19X4.92" HDG	3	BK8-MID	
	BOT HORZ L2X2X.19X3.89" HDG	3	BK8-BOT	
	BOLT ASSY 5/8 X 1-3/4 HSB A325	18	210030GALW	
	LEG BASE U2.77"x25"x4.58" HDG	3	RSF-AW	
	TOP HORZ L2X2X.19X4.01" HDG	3	BK9-TOP	
	DIAG L2X2X.19X5.10" HDG	3	BK9-MID	
	BOT HORZ L2X2X.19X4.12" HDG	3	BK9-BOT	
	BOLT ASSY 5/8 X 1-3/4 HSB A325	18	210030GALW	
	LEG BASE U2.77"x25"x4.58" HDG	3	RSF-AW	
	TOP HORZ L2X2X.19X4.23" HDG	3	BK10-TOP	
	DIAG L2X2X.19X5.28" HDG	3	BK10-MID	
	BOT HORZ L2X2X.19X4.34" HDG	3	BK10-BOT	
	BOLT ASSY 5/8 X 1-3/4 HSB A325	18	210030GALW	



- NOTES:**
- MAT REINFORCING BARS NOT SHOWN FOR CLARITY.
 - BOLT ASSYS IN B.O.M. CONSIST OF BOLT, SPRING LOCK WASHER, & NUT.
 - NOMINAL METRIC EQUIVALENTS ARE GIVEN FOR REFERENCE ONLY AND SHALL NOT BE SUBSTITUTED FOR THE DESCRIBED SIZES UNLESS OTHERWISE APPROVED BY ROHN PRODUCTS.
 - ALL DIMENSIONS IN PARENTHESES ARE IN METERS, UNLESS OTHERWISE NOTED.

TOWER SHORT BASE FOUNDATION KIT DETAILS



PO BOX 5999
PEORIA, IL 61601-5999
TOLL FREE 800-772-ROHN

THIS DRAWING IS THE PROPERTY OF ROHN. IT IS NOT TO BE REPRODUCED, COPIED, OR TRANSMITTED IN ANY FORM OR BY ANY MEANS, WITHOUT THE WRITTEN CONSENT OF ROHN PRODUCTS.

RSI TOWER
SHORT BASE SECTION KITS

DWN:	CEI	JDM	DATE:	05/21/2012
ENGR:	HA		SHEET #:	1 OF 1
PRJ. ENGR:	OH		PRJ. MANGER:	
DRAWING NO:	RSLSEK		REV:	4

REVISIONS	
REV	DESCRIPTION
3	UPDATE DRAWING TO NEW FINISHES & ADD NOTE #5
2	
1	DATE: 10/01/12

DATE: 10/01/12	DATE: 06/14/2012
DATE: 06/14/2012	SHEET #:
DATE: 06/14/2012	1 OF 1
DATE: 06/14/2012	PRJ. MGR:
DATE: 06/14/2012	CH:
DATE: 06/14/2012	DWG:
DATE: 06/14/2012	JDM:
DATE: 06/14/2012	ZAW:

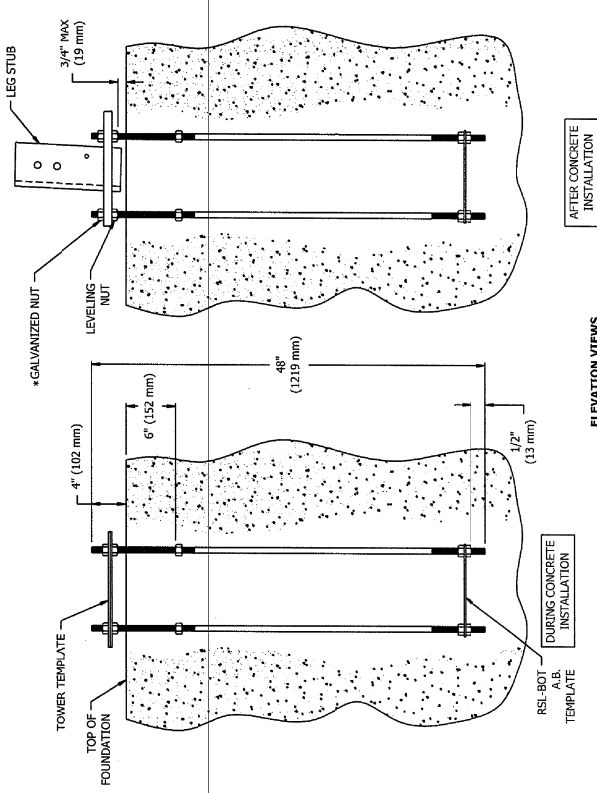
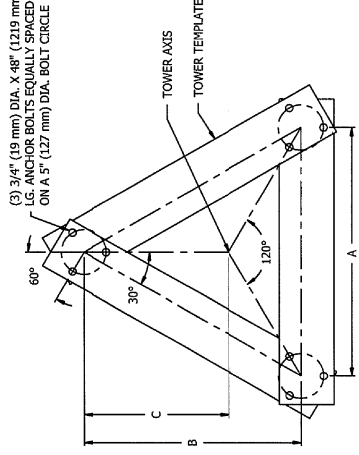
KIT NO.	PART NO.	QTY.	A	B	C	DESCRIPTION
RAL02 (FOR NO. 2 RSL TOWER SECTION)	RSL2-TEHK	1	2'-3 0/16"	1'-11 7/16"	1'-3 1/16"	TOWER TEMPLATE KIT R2
	RSL2-6W	3	2'-3 0/16"	1'-11 7/16"	1'-3 1/16"	LEG STUB R2-6 HDG
	RSL2-BOT	3	2'-3 0/16"	1'-11 7/16"	1'-3 1/16"	TEMPLATE .25X7.00"OD BLK
RAL03 (FOR NO. 3 RSL TOWER SECTION)	260093G	9	2'-4 1/2"	2'-2 3/8"	1'-5 9/8"	ANCHOR BOLT 3/4X48 F1554-SS
	RSL3-TEHK	1	2'-4 1/2"	2'-2 3/8"	1'-5 9/8"	TOWER TEMPLATE KIT R3
	RSL3-6W	3	2'-4 1/2"	2'-2 3/8"	1'-5 9/8"	LEG STUB R3-6 HDG
RAL04 (FOR NO. 4 RSL TOWER SECTION)	RSL4-TEHK	1	2'-9 3/8"	2'-4 15/16"	1'-7 5/16"	ANCHOR BOLT 3/4X48 F1554-SS
	RSL4-6W	3	2'-9 3/8"	2'-4 15/16"	1'-7 5/16"	LEG STUB R4-6 HDG
	RSL4-BOT	3	2'-9 3/8"	2'-4 15/16"	1'-7 5/16"	TEMPLATE .25X7.00"OD BLK
RAL05 (FOR NO. 5 RSL TOWER SECTION)	260093G	9	3'-0 5/16"	2'-7 7/16"	1'-9"	ANCHOR BOLT 3/4X48 F1554-SS
	RSL5-TEHK	1	3'-0 5/16"	2'-7 7/16"	1'-9"	TOWER TEMPLATE KIT R5
	RSL5-6W	3	3'-0 5/16"	2'-7 7/16"	1'-9"	LEG STUB R5-6 HDG
RAL06 (FOR NO. 6 RSL TOWER SECTION)	RSL6-TEHK	1	3'-3 1/4"	2'-10"	1'-10 11/16"	ANCHOR BOLT 3/4X48 F1554-SS
	RSL6-6W	3	3'-3 1/4"	2'-10"	1'-10 11/16"	LEG STUB R6-6 HDG
	RSL6-BOT	3	3'-3 1/4"	2'-10"	1'-10 11/16"	TEMPLATE .25X7.00"OD BLK
RAL07 (FOR NO. 7 RSL TOWER SECTION)	260093G	9	3'-6"	3'-0 3/8"	2'-0 1/4"	ANCHOR BOLT 3/4X48 F1554-SS
	RSL7-TEHK	1	3'-6"	3'-0 3/8"	2'-0 1/4"	TOWER TEMPLATE KIT R7
	RSL7-6W	3	3'-6"	3'-0 3/8"	2'-0 1/4"	LEG STUB R7-10 HDG
RAL08 (FOR NO. 8 RSL TOWER SECTION)	RSL8-TEHK	1	3'-8 11/16"	3'-2 11/16"	2'-1 13/16"	ANCHOR BOLT 3/4X48 F1554-SS
	RSL8-6W	3	3'-8 11/16"	3'-2 11/16"	2'-1 13/16"	LEG STUB R8-10 HDG
	RSL8-BOT	3	3'-8 11/16"	3'-2 11/16"	2'-1 13/16"	TEMPLATE .25X7.00"OD BLK
RAL09 (FOR NO. 9 RSL TOWER SECTION)	260093G	9	3'-11 3/8"	3'-5 1/16"	2'-3 3/8"	ANCHOR BOLT 3/4X48 F1554-SS
	RSL9-TEHK	1	3'-11 3/8"	3'-5 1/16"	2'-3 3/8"	TOWER TEMPLATE KIT R9H
	RSL9-6W	3	3'-11 3/8"	3'-5 1/16"	2'-3 3/8"	LEG STUB R9-10 HDG
RAL10 (FOR NO. 10 RSL TOWER SECTION)	RSL10-TEHK	1	4'-2 1/8"	3'-7 3/8"	2'-4 15/16"	ANCHOR BOLT 3/4X48 F1554-SS
	RSL10-6W	3	4'-2 1/8"	3'-7 3/8"	2'-4 15/16"	LEG STUB R10-10 HDG
	RSL10-BOT	3	4'-2 1/8"	3'-7 3/8"	2'-4 15/16"	TEMPLATE .25X7.00"OD BLK
	260093G	9				ANCHOR BOLT 3/4X48 F1554-SS

ROHN PRODUCTS
 P.O. BOX 5999
 PEORIA, IL 61601-5999
 TOLL FREE 800-727-4088
 © 2012 ROHN PRODUCTS. ALL RIGHTS RESERVED.

RSL TOWER
 LEG STUBS & ANCHOR KITS

DWN: ZAW CHD: JDM DATE: 06/14/2012
 ENGR: DWG SHEET #: 1 OF 1
 PRJ. MGR:
 DRAWING NO: RSLABL REV: 3

- NOTES**
- ALL ANCHOR BOLTS MUST MEET OR EXCEED REQUIREMENTS OF A.S.T.M. F1554-52, SS GRADE 105. SPECIAL CARE MUST BE TAKEN WHEN LIFTING ANCHOR BOLT CLUSTER, IN ORDER TO PREVENT ANCHOR BOLT FROM BEING DAMAGED.
 - ANCHOR BOLTS MUST BE ADEQUATELY SUPPORTED AND RESTRAINED TO PREVENT MOVEMENT OF THE CLUSTER DURING CONCRETE INSTALLATION. IT IS THE RESPONSIBILITY OF THE FOUNDATION CONTRACTOR TO VERIFY THAT THE CORRECT ANCHOR BOLT TEMPLATE AND FOUNDATION ARE BEING USED. IT IS THE RESPONSIBILITY OF THE FOUNDATION DESIGN ENGINEER TO INSURE THAT THE ANCHORAGES PROVIDED ARE COMPATIBLE WITH THE PROPOSED FOUNDATION DESIGN AND THAT THE CAPACITIES OF THE ANCHORAGES ARE LIMITED BY THE STRENGTH OF THE FOUNDATION.
 - AFTER ANCHOR BOLTS ARE INSTALLED AND CONCRETE HAS TAKEN ITS INITIAL SET, ANCHOR BOLTS MUST NOT BE MOVED, BENT OR REALIGNED IN ANY MANNER. A NUT LOCKING DEVICE MUST BE INSTALLED ON ALL ANCHOR BOLTS.
 - ALL DIMENSIONS IN PARENTHESES ARE IN METERS, UNLESS OTHERWISE NOTED.
 - NOMINAL METRIC EQUIVALENTS ARE GIVEN FOR ALL DIMENSIONS. METRIC EQUIVALENTS SHALL NOT BE SUBSTITUTED FOR THE US CUSTOMARY SIZE UNLESS OTHERWISE APPROVED BY ROHN PRODUCTS.
 - ANCHOR BOLT NUTS SHALL BE ROTATED 1/3 TURN FROM SLUG TIGHT CONDITION WITH BOTTOM LEVELING NUT HELD IN PLACE.



ELEVATION VIEWS

FILE NO.		RSL Tower	
REVISIONS			
REV.	DESCRIPTION	DWN	CHK
1	ISSUE DRAWING TO NEW STANDARDS	ZAW	SSM
1	DATE: 09/15/12		HA

DWN:	ZAW	CHKD:	SSM	DATE:	07/11/12
ENGR:				SHEET #:	1 OF 1
PROJ. ENGR:	HA			PROJ. MANGER:	
DRAWING NO:				OH	
REV:					
	RSL-01-F1				1

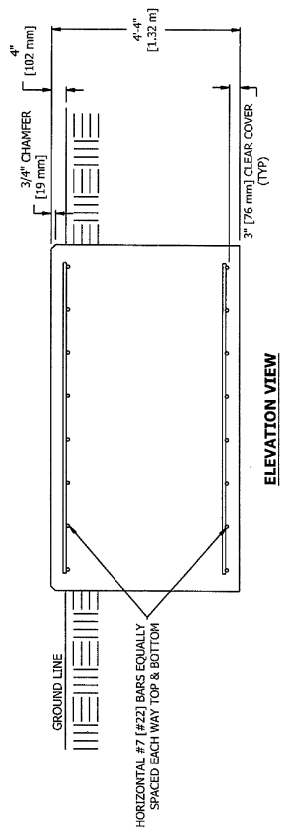
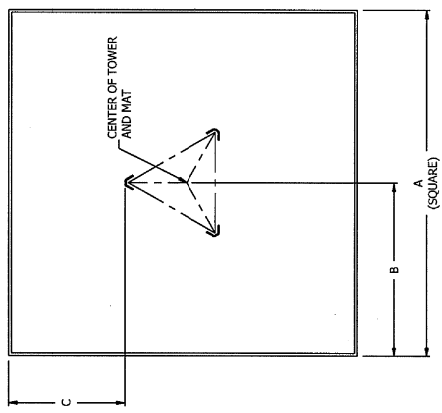
THIS DRAWING IS THE PROPERTY OF ROHN PRODUCTS. IT IS NOT TO BE REPRODUCED, COPIED OR TRANSMITTED IN ANY FORM OR BY ANY MEANS, WITHOUT OUR WRITTEN CONSENT.

ROHN
PRODUCTS
PO BOX 5999
PEORIA, IL 61601-5999
TOLL FREE 800-772-ROHN

RSL TOWER
STANDARD MAT FOUNDATION DETAILS

BASE SECTION REFERENCE	NOMINAL FACE WIDTH	FOUNDATION DIMENSIONS			CONCRETE (CU. YDS.) [CU. METERS]	TOTAL NO. 7 BARS [NO. 22]
		A	B	C		
2	3'-3" [0.70 m]	7'-6" [2.29 m]	3'-9" [1.14 m]	2'-4" [0.71 m]	9.0 [6.9]	32
3	2'-6" [0.78 m]	7'-9" [2.36 m]	3'-10 1/2" [1.18 m]	2'-4" [0.71 m]	9.6 [7.3]	40
4	2'-9" [0.85 m]	8'-0" [2.44 m]	4'-0" [1.22 m]	2'-4" [0.71 m]	10.3 [7.9]	40
5	3'-0" [0.93 m]	8'-3" [2.51 m]	4'-1 1/2" [1.26 m]	2'-4" [0.71 m]	10.9 [8.3]	40
6	3'-3" [1.00 m]	8'-6" [2.59 m]	4'-3" [1.30 m]	2'-3" [0.69 m]	11.6 [8.9]	40
7	3'-6" [1.08 m]	8'-6" [2.59 m]	4'-3" [1.30 m]	2'-3" [0.66 m]	11.6 [8.9]	40
8	3'-9" [1.15 m]	9'-6" [2.90 m]	4'-9" [1.45 m]	2'-6" [0.76 m]	14.5 [11.1]	40
9	4'-0" [1.23 m]	9'-9" [2.97 m]	4'-10 1/2" [1.49 m]	2'-6" [0.76 m]	15.3 [11.7]	48
10	4'-3" [1.30 m]	10'-0" [3.05 m]	5'-0" [1.52 m]	2'-6" [0.76 m]	16.0 [12.2]	48

NOTE: SEE DRAWING NO. B090548 FOR STANDARD FOUNDATION NOTES.



STANDARD FOUNDATION NOTES
ANSI/TIA-222-G

- STANDARD FOUNDATION DESIGNS ARE IN ACCORDANCE WITH ANSI/TIA-222-G, "STRUCTURAL STANDARDS FOR STEEL ANTENNA TOWERS AND ANTENNA SUPPORTING STRUCTURES", SECTION 9 AND ANNEX F FOR THE FOLLOWING PRESUMPTIVE CLAY SOIL PARAMETERS:

N (blows/ft) (blows/m)	φ (deg)	Y (lb/ft ³) (kN/m ³)	C (lb/ft ²) (kPa)	Ultimate Bearing (psf)		Ultimate Skin Friction (psf) (kN/m ²)	k (pci) (kN/m ³)	ε _{av}
				Shallow Frds.	Deep Frds.			
8 [26]	0	110 [17]	1000 [68]	5000 [240]	9000 [431]	500 [24]	150 [41,000]	0.01

- THE PURCHASER MUST VERIFY THAT ACTUAL SITE SOIL PARAMETERS MEET OR EXCEED ANSI/TIA-222-G PRESUMPTIVE CLAY SOIL DESIGN PARAMETERS AND THAT THE PENETRATION AND/OR ZONE OF SEASONAL MOISTURE VARIATION AT THE SITE, FOUNDATION DESIGN MODIFICATIONS MAY BE REQUIRED IN THE EVENT PRESUMPTIVE CLAY SOIL PARAMETERS ARE NOT APPLICABLE FOR THE ACTUAL SUBSURFACE CONDITIONS ENCOUNTERED.
- A SITE-SPECIFIC INVESTIGATION IS REQUIRED FOR CLASS III STRUCTURES IN ACCORDANCE WITH ANSI/TIA-222-G.
- FOUNDATION DESIGNS ASSUME FIELD INSPECTIONS WILL BE PERFORMED BY THE PURCHASER'S REPRESENTATIVE TO VERIFY THAT CONSTRUCTION MATERIALS, INSTALLATION METHODS AND ASSUMED DESIGN PARAMETERS ARE ACCEPTABLE BASED ON THE CONDITIONS EXISTING AT THE SITE.
- WORK SHALL BE IN ACCORDANCE WITH LOCAL CODES, SAFETY REGULATIONS AND UNLESS OTHERWISE NOTED, THE LATEST REVISION OF ACI 318, "BUILDING CODE REQUIREMENTS FOR REINFORCED CONCRETE". PROCEDURES FOR THE PROTECTION OF EXCAVATIONS, EXISTING CONSTRUCTION AND UTILITIES SHALL BE ESTABLISHED PRIOR TO FOUNDATION INSTALLATION. CONCRETE MATERIALS SHALL CONFORM TO THE APPROPRIATE STATE REQUIREMENTS FOR EXPOSED STRUCTURAL CONCRETE.
- PROPORTIONS OF CONCRETE MATERIALS SHALL BE SUITABLE FOR THE INSTALLATION METHOD UTILIZED AND SHALL RESULT IN DURABLE CONCRETE FOR RESISTANCE TO LOCAL ANTICIPATED AGGRESSIVE ACTIONS. THE DURABILITY REQUIREMENT OF ACI 318 CHAPTER 4 SHALL BE SATISFIED BASED ON THE CONDITIONS EXPECTED AT THE SITE. AS A MINIMUM, CONCRETE SHALL DEVELOP A MINIMUM COMPRESSIVE STRENGTH OF 4000 PSI (27.6 MPa) IN 28 DAYS.
- MAXIMUM SIZE OF AGGREGATE SHALL NOT EXCEED SIZE SUITABLE FOR INSTALLATION METHOD UTILIZED OR 1/3 CLEAR DISTANCE BEHIND OR BETWEEN REINFORCING. MAXIMUM SIZE MAY BE SUCH AS VIBRATING WILL PREVENT HONEYCOMBS OR VOIDS.
- REINFORCEMENT SHALL BE DEFORMED AND CONFORM TO THE REQUIREMENTS OF ASTM A615 GRADE 60 UNLESS OTHERWISE NOTED. SPLICES IN REINFORCEMENT SHALL NOT BE ALLOWED UNLESS OTHERWISE INDICATED.
- REINFORCING CAGES SHALL BE BRACED TO RETAIN PROPER DIMENSIONS DURING HANDLING, THROUGHOUT PLACEMENT OF CONCRETE AND DURING EXTRACTION OF TEMPORARY CASING.
- WELDING IS PROHIBITED ON REINFORCING STEEL AND EMBEDMENTS.

- MINIMUM CONCRETE COVER FOR REINFORCEMENT SHALL BE 3 INCHES (76 mm) UNLESS OTHERWISE NOTED. APPROVED SPACERS SHALL BE USED TO INSURE A 3 INCH (76 mm) MINIMUM COVER ON REINFORCEMENT. CONCRETE COVER FROM TOP OF FOUNDATION TO ENDS OF VERTICAL REINFORCEMENT SHALL NOT EXCEED 3 INCHES (76 mm) NOR BE LESS THAN 2 INCHES (51 mm).
- SPACERS SHALL BE ATTACHED INTERMITTENTLY THROUGHOUT THE ENTIRE LENGTH OF VERTICAL REINFORCING CAGES TO INSURE CONCENTRIC PLACEMENT OF CAGES IN EXCAVATIONS.
- FOUNDATION DESIGNS ASSUME STRUCTURAL BACKFILL TO BE COMPACTED IN 8 INCH (200 mm) MAXIMUM LAYERS TO 95% OF MAXIMUM DRY DENSITY AT OPTIMUM MOISTURE CONTENT IN ACCORDANCE WITH ASTM D698. ADDITIONALLY, STRUCTURAL BACKFILL MUST HAVE A MINIMUM COMPACTED UNIT WEIGHT OF 100 POUNDS PER CUBIC FOOT (16 kN/m³).
- FOUNDATION DESIGNS ASSUME LEVEL GRADE AT THE SITE.
- FOUNDATION INSTALLATION SHALL BE SUPERVISED BY PERSONNEL KNOWLEDGEABLE AND EXPERIENCED WITH THE PROPOSED FOUNDATION TYPE. CONSTRUCTION SHALL BE IN ACCORDANCE WITH GENERALLY ACCEPTED INSTALLATION PRACTICES.
- FOR FOUNDATION AND ANCHOR TOLERANCES SEE DRAWING A810314.
- LOOSE MATERIAL SHALL BE REMOVED FROM BOTTOM OF EXCAVATION PRIOR TO CONCRETE PLACEMENT. SIDES OF EXCAVATION SHALL BE ROUGH AND FREE OF LOOSE CUTTINGS.
- CONCRETE SHALL BE PLACED IN A MANNER THAT WILL PREVENT SEGREGATION OF CONCRETE MATERIALS, INFILTRATION OF WATER OR SOIL AND OTHER OCCURRENCES WHICH MAY DECREASE THE STRENGTH OR DURABILITY OF THE FOUNDATION.
- FREE FALL CONCRETE MAY BE USED PROVIDED FALL IS VERTICAL DOWN WITHOUT HITTING SIDES OF EXCAVATION, FORMWORK, REINFORCING BARS, FORM TIES, CAGE BRACING OR OTHER OBSTRUCTIONS. UNDER NO CIRCUMSTANCES SHALL CONCRETE FALL THROUGH WATER.
- CONCRETE SHALL BE PLACED AGAINST UNDISTURBED SOIL EXCEPT FOR PIERS OR PIER AND PAD FOUNDATIONS. FORMS FOR PIERS SHALL BE REMOVED PRIOR TO PLACING STRUCTURAL BACKFILL.
- CONSTRUCTION JOINTS, IF REQUIRED IN PIER MUST BE AT LEAST 12 INCHES (305 mm) BELOW BOTTOM OF EMBEDMENTS AND MUST BE INTENTIONALLY ROUGHENED TO A FULL AMPLITUDE OF 1/4 INCH (6 mm). FOUNDATION DESIGN ASSUMES NO OTHER CONSTRUCTION JOINTS.
- CASING, IF USED, SHALL NOT BE LEFT IN PLACE. EQUIPMENT, PROCEDURES, AND PROPORTIONS OF CONCRETE MATERIALS SHALL INSURE CONCRETE WILL NOT BE ADVERSELY DISTURBED UPON CASING REMOVAL. DRILLING FLUID, IF USED, SHALL BE FULLY DISPLACED BY CONCRETE AND SHALL NOT BE DETRIMENTAL TO CONCRETE OR SURROUNDING SOIL. CONTAMINATED CONCRETE SHALL BE REMOVED FROM TOP OF FOUNDATION AND REPLACED WITH FRESH CONCRETE.
- TOP OF FOUNDATION SHALL BE SLOPED TO DRAIN WITH A FLOATED FINISHED. EXPOSED EDGES OF CONCRETE SHALL BE CHAMFERED 3/4" X 3/4" (19 mm X 19 mm) MINIMUM.
- FOR ANCHOR BLOCK TYPE FOUNDATIONS, FOR GUYED TOWERS, ADDITIONAL CORROSION PROTECTION MAY BE REQUIRED FOR STEEL GUY ANCHORS IN DIRECT CONTACT WITH SOIL. DESIGN ASSUMES PERIODIC INSPECTIONS WILL BE PERFORMED OVER THE LIFE OF THE STRUCTURE TO DETERMINE IF ADDITIONAL ANCHOR CORROSION PROTECTION MEASURES MUST BE IMPLEMENTED BASED ON OBSERVED SITE-SPECIFIC CONDITIONS.

REVISIONS		DRAWN	CHECKED	APP'D
REV#	DESCRIPTION			
1	DATE: 08/20/12			

FILE NO.	
REV#	
DESCRIPTION	
DATE	

ROHN
PRODUCTS
PO BOX 5999
FEBUNA, IL 61691-5999
TOLL FREE 800-727-8018
WWW.ROHN-USA.COM

ANSI/TIA-222-G		STANDARD FOUNDATION NOTES	
DRAWN:	FAD	DATE:	Nov/20/2009
ENGR:	HA	SHEET #:	1 OF 1
PRJ. ENGR:	HA	PRJ. MGR:	
DRAWING NO:	E0900548		REV:
			1

FILE NO. Standard-SSV

REVISIONS			
REV	DESCRIPTION	BY	CHK
8	REDRAWN TO AUTOCAD	JJA	JDA
9	DATE: 3/07/2006		

FOUNDATION AND ANCHOR TOLERANCES
ALL FOUNDATIONS

1. CONCRETE DIMENSIONS - PLUS OR MINUS 1" (25mm).
2. DEPTH OF FOUNDATION - PLUS 3" (76mm) OR MINUS 0".
3. DRILLED FOUNDATIONS OUT OF PLUMB - 1.0 DEGREE.
4. REINFORCING STEEL PLACEMENT - PER A.C.I. 301.
5. PROJECTION OF EMBEDMENTS - PLUS OR MINUS 1/8" (3mm).
6. VERTICAL EMBEDMENTS OUT OF PLUMB - 0.5 DEGREE.

ANCHOR BOLTS

7. MAXIMUM DISTANCE FROM CENTERLINE OF ANCHOR BOLTS TO CENTERLINE OF FOUNDATION - 1/24 OF PIER DIAMETER UP TO A MAXIMUM OF 2" (51mm).
8. ANCHOR BOLT SPACING - 1/16" (2mm).
9. ANCHOR BOLT CIRCLE ORIENTATION - 0.25 DEGREE.
10. ANCHOR BOLT CIRCLE DIAMETER - PLUS OR MINUS 1/16" (2mm).

SELF-SUPPORTING TOWERS

11. FACE SPREAD DIMENSION CENTER TO CENTER OF ANCHOR BOLT CIRCLES - PLUS OR MINUS 1/16" (2mm) OR 1/16" (2mm) PER 20 FT. (6m) OF FACE SPREAD.
12. MAXIMUM DIFFERENCE BETWEEN ANY TWO FOUNDATION ELEVATIONS - 1/2" (13mm).

GUYED TOWERS

13. GUY RADIUS - PLUS OR MINUS 5% OF DISTANCE SPECIFIED.
14. ANCHOR ELEVATION - PLUS OR MINUS 5% OF GUY RADIUS.
15. ANCHOR ALIGNMENT (PERPENDICULAR TO GUY RADIUS) - 1.0 DEGREE.
16. ANCHOR ROD SLOPE - PLUS OR MINUS 1.0 DEGREE.
17. ANCHOR ROD ALIGNMENT WITH GUY RADIUS PLUS OR MINUS 1.0 DEGREE.
18. ANCHOR HEAD OUT OF PLUMB - 1.0 DEGREE.
19. GUY INITIAL TENSION - PLUS OR MINUS 10% OF TENSION SPECIFIED.

NOTE: TOLERANCES IN NOTES 13 AND 14 CAN NOT OCCUR SIMULTANEOUSLY

WARNING!!!

AFTER ANCHOR BOLTS ARE INSTALLED IN CONCRETE HAS TAKEN ITS INITIAL SET, ANCHOR BOLTS MUST NOT BE MOVED, BENT OR REALIGNED IN ANY MANNER. A NUT LOCKING DEVICE MUST BE INSTALLED ON ALL ANCHOR BOLTS.

DWG REFERENCE

RPN
PRODUCTS
6718 WEST PLANK ROAD
PEORIA, IL 61604
TOLL FREE 800-727-4094

THIS DRAWING IS THE PROPERTY OF RPN. IT IS NOT TO BE REPRODUCED, COPIED, OR TRANSMITTED IN ANY MANNER WITHOUT OUR WRITTEN CONSENT.

FOUNDATION & ANCHOR TOLERANCE

DWG: CSR	CHKD: KTL	DATE: Sep/25/1987
ENGR: XK	DRAWING NO: AS10214	
		REV: 8