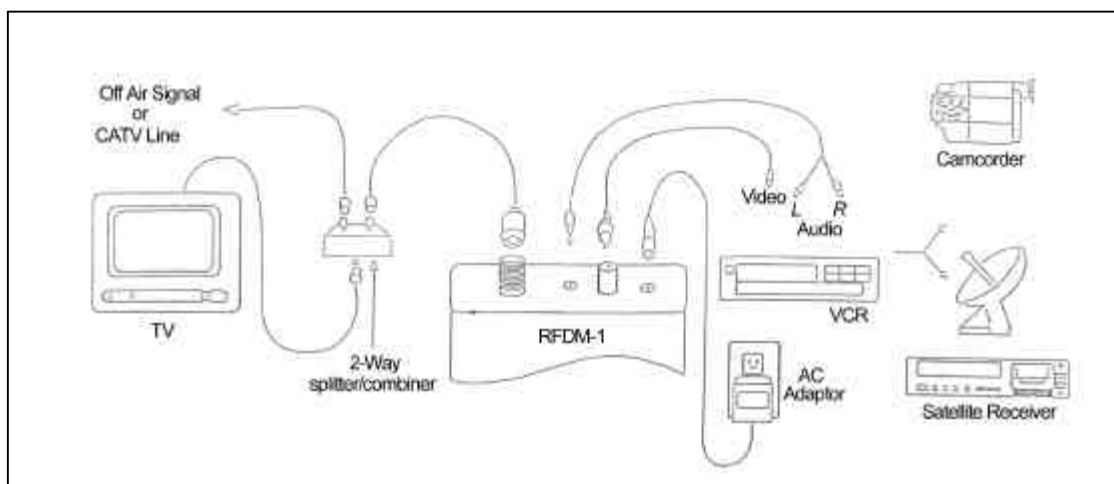


DIGITAL AGILE AUDIO/VIDEO MODULATOR SKYMOD1 INSTALLATION INSTRUCTIONS

I. Modulator Installation:

1. Insert the male RCA connector from the video source into the SKYMOD1 RCA jack.
2. Insert the 3.5mm miniature plug from the audio source into the SKYMOD1 audio input (Mini jack)
3. Connect F to F connecting cable from RF output (F-Female connector on SKYMOD1) to one output port of a splitter.
4. Connect cable from Off-Air or CATV line or any other RF signal source to other port of splitter.
5. Connect input of splitter to TV RF Input.
6. Plug the provided 12 VDC, 100 mA power supply into the power line and SKYMOD1 power jack.

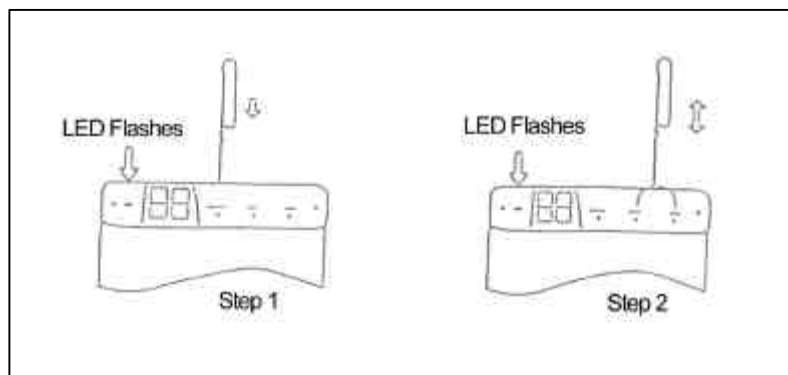
This completes the installation of SKYMOD1 modulator



II. Channel Programming Steps:

Step1 – Using Paper clip or ball point pen, press and hold “select”

Step2 – Release button and press “channel” button up or down while LED is flashing. When LED stops flashing, channel selection is complete.



Note:

1. While doing the channel selection process, if power goes off, the "last channel" memory will malfunction even though LED will be flashing.
2. The SKYMOD1 output channel has been factory preset for UHF channels 14 thru 78.
3. To change output channel range to CATV 65-135: Disconnect power, and then depress the ? button. Reconnect the power and 01 will appear. Release the ? button and disconnect the power, Reconnect the power and you are ready to channel select.
4. To change output channel range to UHF 14-39 and CATV 91-135: Disconnect power, and then depress the ? button. Reconnect the power and 02 will appear, Release the ? button and disconnect the power. Reconnect the power and you are ready to channel select.
5. To change output channel range to UHF 21-69: Disconnect power, and then depress both the ? and ? buttons. Reconnect the power and 03 will appear. Release the ? and ? buttons and disconnect power. Reconnect the power and you are ready to channel select.
6. To change output channel range to factory UHF 14-78: Disconnect power, and then depress the SELECT button. Reconnect the power and 00 will appear. Release the SELECT button and disconnect power. Reconnect the power and you are ready to channel select.

SKYMOD1 Audio/Video Modulator Specifications

Output Frequency Range	470-860 MHZ
Output Channels	UHF: Ch. 14-78, CATV Ultra Ch. 65-135
Video Frequency Response	+/- 1db
Aural Inter carriers Stability	4.5 MHz w/n +/- 3KHz
Video Input IMP/RF Output IMP	75 Ohm
Audio Input IMP	>10K Ohm
Frequency Accuracy/Stability	PLL Crystal Stabilized +/-5KHz
Video Input Level	1Vp-p
Audio THD	0.4%
Output Level	10 dBmV
Video MOD Index	70% +/-10%
Dual Sideband Audio/Visual Carrier Ratio	-15dB
Size	95Lx75Wx26H m/m (3 3/4Lx3Wx1H inches)
Weight	4 oz.
Power Requirement	110-120 VAC/60Hz