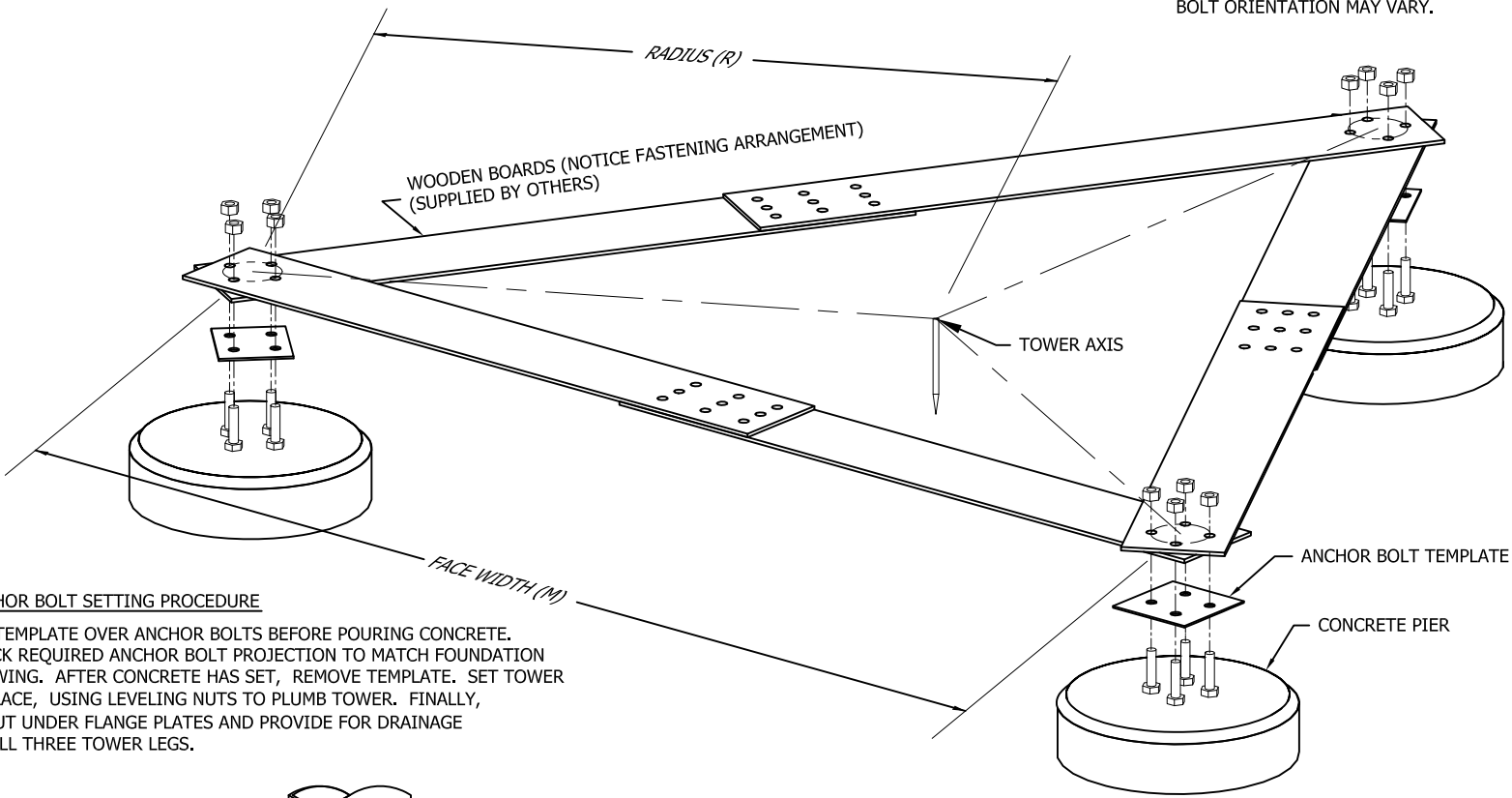
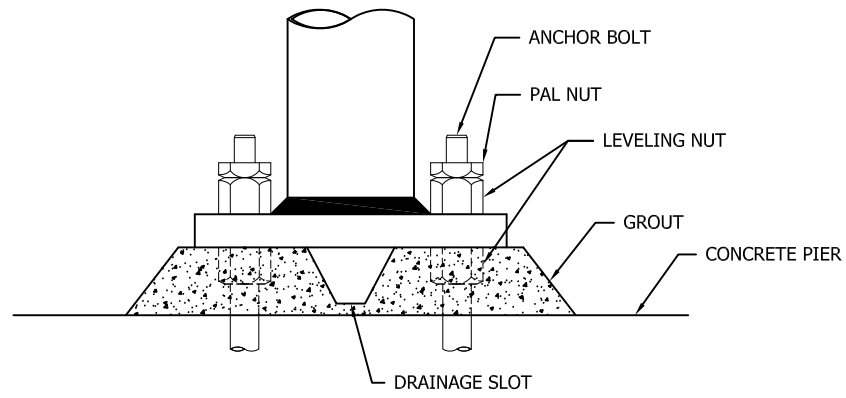


NOTE: ANCHOR BOLT ORIENTATION SHOWN BELOW IS FOR REFERENCE ONLY. ACTUAL ANCHOR BOLT ORIENTATION MAY VARY.



ANCHOR BOLT SETTING PROCEDURE

SET TEMPLATE OVER ANCHOR BOLTS BEFORE POURING CONCRETE. CHECK REQUIRED ANCHOR BOLT PROJECTION TO MATCH FOUNDATION DRAWING. AFTER CONCRETE HAS SET, REMOVE TEMPLATE. SET TOWER IN PLACE, USING LEVELING NUTS TO PLUMB TOWER. FINALLY, GROUT UNDER FLANGE PLATES AND PROVIDE FOR DRAINAGE ON ALL THREE TOWER LEGS.



NOTE: HOLES FOR ANCHOR BOLTS IN WOODEN BOARDS MUST BE SAME DIAMETER AS THE ANCHOR BOLTS BEING USED.

FILE NO. Standard-SSV

REVISIONS				
REV.	DESCRIPTION	DWN	CHK	APP
4	REDRAWN INTO AUTOCAD FORMAT	KB3	JDM	HA
DATE: Jul01/2007				

DWG REFERENCE



6718 WEST PLANK ROAD
PEORIA, IL 61604
TOLL FREE 800-727-ROHN

THIS DRAWING IS THE PROPERTY OF ROHN, IT IS NOT TO BE REPRODUCED, COPIED OR TRACED IN WHOLE OR IN PART WITHOUT OUR WRITTEN CONSENT.

**ANCHOR BOLT LAYOUT
PROCEDURE FOR SSV TOWERS**

DWN: OH	CHK'D: TWS	DATE: Oct/11/1971
------------	---------------	----------------------

ENG'R: RDM	
---------------	--

DRAWING NO: C711017	REV: 4
------------------------	-----------

Jul09/2007 9:32:19 PM

Revision