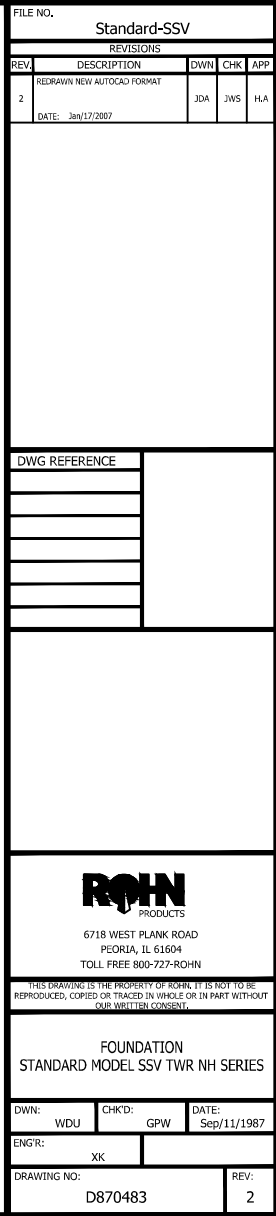
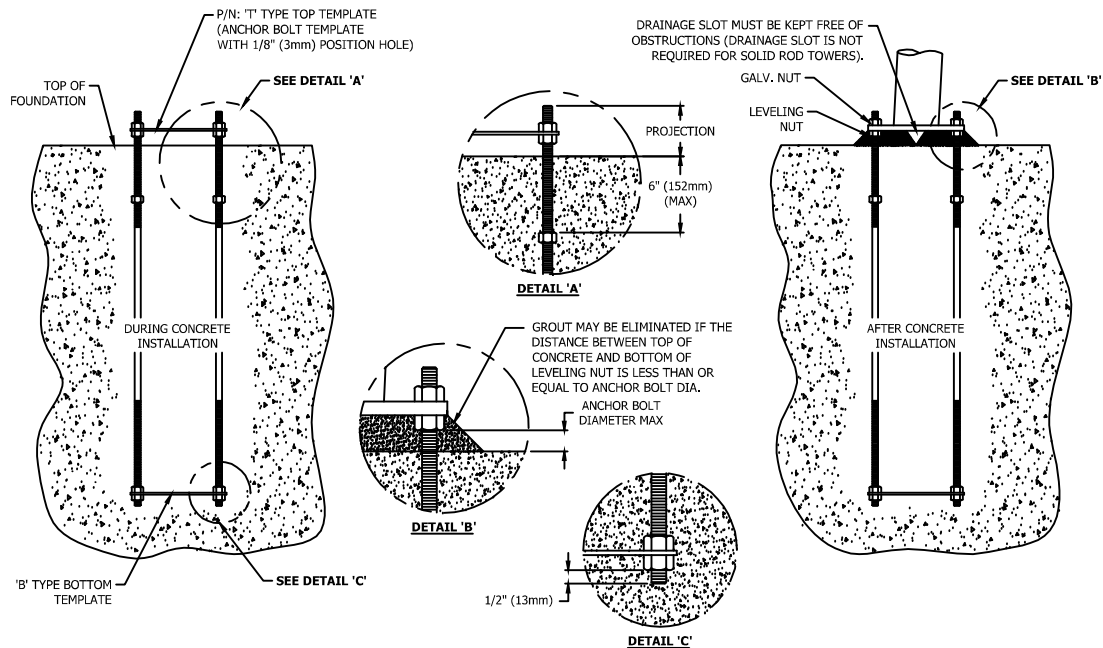


Standard-SSV													
REVISIONS													
REV.	DESCRIPTION	DWN	CHK	APP									
7	ADDED NOTE #15												
DATE: 08/26/12		ZAW	JDM	HA									

\Erection\



#### ANCHOR BOLT INSTALLATION TOLERANCES

1. FACE SPREAD DIMENSION CENTER-TO-CENTER OF ANCHOR BOLT CIRCLES - PLUS OR MINUS 1/16" (2mm) OR 1/16"(2mm) PER 20 FT. (6m) OF FACE SPREAD.
2. MAXIMUM DIFFERENCE BETWEEN ANY TWO FOUNDATION ELEVATIONS - 1/2" (13mm).
3. CONCRETE DIMENSIONS - PLUS OR MINUS 1" (25mm).
4. DEPTH OF FOUNDATION - PLUS 3" (76mm) OR MINUS 0".
5. DRILLED FOUNDATIONS OUT OF PLUMB - 1.0 DEGREE.
6. REINFORCING STEEL PLACEMENT - PER A.C.I. 301.
7. PROJECTION OF EMBEDMENTS - PLUS OR MINUS 1/8" (3mm).
8. VERTICAL EMBEDMENTS OUT OF PLUMB - 1/2 DEGREE.
9. MAXIMUM DISTANCE FROM CENTERLINE OF ANCHOR BOLTS TO CENTERLINE OF FOUNDATION - 1/24 OF PIER DIAMETER UP TO A MAXIMUM OF 2" (50mm).
10. ANCHOR BOLT SPACING - 1/16" (2mm).
11. ANCHOR BOLT CIRCLE ORIENTATION - 1/4 DEGREE.
12. ANCHOR BOLT CIRCLE DIAMETER - PLUS OR MINUS 1/16" (2mm).

#### !!! WARNING !!!

- AFTER ANCHOR BOLTS ARE INSTALLED AND CONCRETE HAS TAKEN ITS INITIAL SET, ANCHOR BOLTS MUST NOT BE MOVED, BENT OR REALIGNED IN ANY MANNER.

#### ANCHOR BOLT TIGHTENING NOTES


1. NUTS, THREADS AND ALL NUT CONTACT SURFACES MUST BE CLEANED AND LUBRICATED AFTER CONCRETE INSTALLATION AND IMMEDIATELY BEFORE INSTALLATION OF LEVELING AND TOP NUTS. NUTS MUST BE FREE TO MOVE THROUGHOUT THE ENTIRE LENGTH OF THE ANCHOR BOLT THREAD PROJECTION.
2. AFTER LEVELING THE LEVELING NUTS AND SETTING THE BASE PLATE, TOP NUTS MUST BE INSTALLED IN AN INCREMENTAL STAR TIGHTENING SEQUENCE TO A SNUG TIGHT CONDITION FOLLOWED BY TIGHTENING THE LEVELING NUTS IN A SIMILAR PATTERN TO A SNUG TIGHT CONDITION. SNUG TIGHT IS DEFINED BY THE TIGHTNESS OBTAINED WITH THE EFFORT OF ONE PERSON WITH A 12 INCH NOMINAL LENGTH WRENCH.
3. AFTER ALL TOP AND LEVELING NUTS ARE TIGHTENED TO A SNUG TIGHT CONDITION, TOP NUTS SHALL BE FURTHER TIGHTENED IN AN INCREMENTAL STAR PATTERN WITH THE LEVELING NUTS SECURED TO RESULT IN A 1/3 TOP NUT ROTATION FOR ANCHOR BOLTS 1-1/2 INCHES OR LESS IN DIAMETER, OR A 1/6 TOP NUT ROTATION FOR ANCHOR BOLTS GREATER THAN 1-1/2 INCHES IN DIAMETER.

#### NOTES

1. ALL ANCHOR BOLTS MUST MEET OR EXCEED REQUIREMENTS OF A.S.T.M. F1554-S2, S5 GRADE 105.
2. GROUT TO BE 5000 PSI MIN. ULTIMATE STRENGTH/7 DAY NON-SHRINKING AND NON-METALLIC.
3. SPECIAL CARE MUST BE TAKEN WHEN LIFTING ANCHOR BOLT CLUSTER, IN ORDER TO PREVENT ANCHOR BOLT TEMPLATE DISTORTION.
4. ANCHOR BOLT ASSEMBLY MUST BE ADEQUATELY SUPPORTED AND RESTRAINED TO PREVENT MOVEMENT OF THE CLUSTER DURING CONCRETE INSTALLATION.
5. IT IS THE RESPONSIBILITY OF THE FOUNDATION CONTRACTOR TO VERIFY THAT THE CORRECT ANCHOR BOLT TEMPLATE AND FOUNDATION SHOWN ON RESPECTIVE SITE DRAWINGS ARE BEING USED.
6. IT IS THE RESPONSIBILITY OF THE FOUNDATION DESIGN ENGINEER TO INSURE THAT THE ANCHORAGES PROVIDED ARE COMPATIBLE WITH THE PROPOSED FOUNDATION DESIGNS AND THAT THE CAPACITIES OF THE ANCHORAGES ARE NOT LIMITED BY THE STRENGTH OF THE FOUNDATIONS.


#### !! WARNING !!

- PRIOR TO PLACING CONCRETE:**
- CHECK THAT THE TEMPLATE ANCHOR BOLT CIRCLE MATCHES THE ANCHOR BOLT CIRCLE SHOWN ON THE STRUCTURE DRAWING.
  - CALL ROHN (309)-566-3000 FOR ANY DISCREPANCY.

FILE NO.				
REVISIONS				
REV.	DESCRIPTION	DWN	CHK	APP
4	ADDED DIMENSION TO SHOW PROJECTION	CEJ	JDM	HA
DATE: 01/30/14				
<div>  <p>PO BOX 5999 PEORIA, IL 61601-5999 TOLL FREE 800-727-ROHN</p> </div>				
THIS DRAWING IS THE PROPERTY OF ROHN. IT IS NOT TO BE REPRODUCED, COPIED OR TRACED IN WHOLE OR IN PART WITHOUT OUR WRITTEN CONSENT.				
ANCHOR BOLT LAYOUTS FOR 5/8", 3/4", 7/8", & 1" ANCHOR BOLTS				
DWN:	MF	CHKD:	KTL	DATE: 09/07/05
ENGR:	HA	SHEET #: 1 OF 1		
PRJ. ENGR:		PRJ. MANGR:		
DRAWING NO: B050439				REV: 4

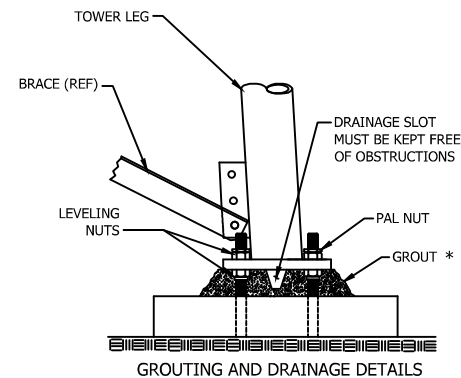
### STANDARD FOUNDATION NOTES

1. FOUNDATION DESIGNS ARE IN ACCORDANCE WITH ANSI/TIA/EIA/-222-F, "STRUCTURAL STANDARDS FOR STEEL ANTENNA TOWERS AND ANTENNA SUPPORTING STRUCTURES", SECTION 7, FOR "NORMAL" SOIL CONDITIONS. "NORMAL" SOIL IS DEFINED AS DRY, COHESIVE SOIL WITH AN ALLOWABLE NET VERTICAL BEARING CAPACITY OF 4000 PSF (192 kPa) AND AN ALLOWABLE NET HORIZONTAL PRESSURE OF 400 PSF PER LINEAL FOOT OF DEPTH (62.8 kPa PER LINEAL METER OF DEPTH) TO A MAXIMUM OF 4000 PSF (192 kPa).
2. THE PURCHASER MUST VERIFY THAT ACTUAL SITE SOIL PARAMETERS MEET OR EXCEED E.I.A. "NORMAL" SOIL PARAMETERS AND THAT THE DEPTH OF STANDARD FOUNDATIONS ARE ADEQUATE BASED ON THE FROST PENETRATION AND/OR ZONE OF SEASONAL MOISTURE VARIATION AT THE SITE. FOUNDATION DESIGN MODIFICATIONS MAY BE REQUIRED IN THE EVENT "NORMAL" SOIL PARAMETERS ARE NOT APPLICABLE FOR THE ACTUAL SUBSURFACE CONDITIONS ENCOUNTERED.
3. FOUNDATION DESIGNS ASSUME FIELD INSPECTIONS WILL BE PERFORMED BY THE PURCHASER'S REPRESENTATIVE TO VERIFY THAT CONSTRUCTION MATERIALS, INSTALLATION METHODS AND ASSUMED DESIGN PARAMETERS ARE ACCEPTABLE BASED ON THE CONDITIONS EXISTING AT THE SITE.
4. WORK SHALL BY IN ACCORDANCE WITH LOCAL CODES, SAFETY REGULATIONS AND UNLESS OTHERWISE NOTED, THE LATEST REVISION OF ACI 318, "BUILDING CODE REQUIREMENTS FOR REINFORCED CONCRETE". PROCEDURES FOR THE PROTECTION OF EXCAVATIONS, EXISTING CONSTRUCTION AND UTILITIES SHALL BE ESTABLISHED PRIOR TO FOUNDATION INSTALLATION.
5. ANCHOR BOLTS SHALL MEET OF EXCEED THE REQUIREMENTS OF ASTM F1554-S2, S5 GRADE 105 AND SHALL BE TIGHTENED TO A SNUG TIGHT CONDITION (FULL EFFORT OF A MAN USING AN ORDINARY SPUD WRENCH).
6. NUT LOCKING DEVICE SHALL BE INSTALLED ON ALL ANCHOR BOLTS.
7. CONCRETE MATERIALS SHALL CONFORM TO THE APPROPRIATE STATE REQUIREMENTS FOR EXPOSED STRUCTURAL CONCRETE.
8. PROPORTIONS OF CONCRETE MATERIALS SHALL BE SUITABLE FOR THE INSTALLATION METHOD UTILIZED AND SHALL RESULT IN DURABLE CONCRETE FOR RESISTANCE TO LOCAL ANTICIPATED AGGRESSIVE ACTIONS. THE DURABILITY REQUIREMENT OF ACI 318 CHAPTER 4 SHALL BE SATISFIED BASED ON THE CONDITIONS EXPECTED AT THE SITE. AS A MINIMUM, CONCRETE SHALL DEVELOP MINIMUM COMPRESSIVE STRENGTH OF 4500 PSI (31.0 MPa) IN 28 DAYS.
9. MAXIMUM SIZE OF AGGREGATE SHALL NOT EXCEED SIZE SUITABLE FOR INSTALLATION METHOD UTILIZED OR 1/3 CLEAR DISTANCE BEHIND OR BETWEEN REINFORCING. MAXIMUM SIZE MAY BE INCREASED TO 2/3 CLEAR DISTANCE PROVIDED WORKABILITY AND METHODS OF CONSOLIDATION SUCH AS VIBRATING WILL PREVENT HONEYCOMBS OR VOIDS.
10. REINFORCEMENT SHALL BE DEFORMED AND CONFORM TO THE REQUIREMENTS OF ASTM A615 GRADE 60 UNLESS OTHERWISE NOTED. SPLICES IN REINFORCEMENT SHALL NOT BE ALLOWED UNLESS OTHERWISE INDICATED.
11. REINFORCING CAGES SHALL BE BRACED TO RETAIN PROPER DIMENSIONS DURING HANDLING AND THROUGHOUT PLACEMENT OF CONCRETE.
12. WELDING IS PROHIBITED ON REINFORCING STEEL AND EMBEDMENTS.
13. MINIMUM CONCRETE COVER FOR REINFORCEMENT SHALL BE 3 INCHES (76 mm) UNLESS OTHERWISE NOTED. APPROVED SPACERS SHALL BE USED TO INSURE A 3 INCH (76 mm) MINIMUM COVER ON REINFORCEMENT.
14. CONCRETE COVER FROM TOP OF FOUNDATION TO ENDS OF VERTICAL REINFORCEMENT SHALL NOT EXCEED 3 INCHES (76 mm) NOR BE LESS THAN 2 INCHES (51 mm).
15. SPACERS SHALL BE ATTACHED INTERMITTENTLY THROUGHOUT THE ENTIRE LENGTH OF VERTICAL REINFORCING CAGES TO INSURE CONCENTRIC PLACEMENT OF CAGES IN EXCAVATIONS.
16. FOUNDATION DESIGNS ASSUME STRUCTURAL BACKFILL TO BE COMPACTED IN 8 INCH (200 mm) MAXIMUM LAYERS TO 95% OF MAXIMUM DRY DENSITY AT OPTIMUM MOISTURE CONTENT IN ACCORDANCE WITH ASTM D698. ADDITIONALLY, STRUCTURAL BACKFILL MUST HAVE A MINIMUM COMPACTED UNIT WEIGHT OF 100 POUNDS PER CUBIC FOOT (16 kN/m3).
17. FOUNDATION DESIGNS ASSUME LEVEL GRADE AT THE SITE.
18. FOUNDATION INSTALLATION SHALL BE SUPERVISED BY PERSONNEL KNOWLEDGEABLE AND EXPERIENCED WITH THE PROPOSED FOUNDATION TYPE. CONSTRUCTION SHALL BE IN ACCORDANCE WITH GENERALLY ACCEPTED INSTALLATION PRACTICES.
19. FOR FOUNDATION AND ANCHOR TOLERANCES SEE STRUCTURE ASSEMBLY DRAWING.
20. LOOSE MATERIAL SHALL BE REMOVED FROM BOTTOM OF EXCAVATION PRIOR TO CONCRETE PLACEMENT. SIDES OF EXCAVATION SHALL BE ROUGH AND FREE OF LOOSE CUTTINGS.
21. CONCRETE SHALL BE PLACED IN A MANNER THAT WILL PREVENT SEGREGATION OF CONCRETE MATERIALS AND OTHER OCCURRENCES WHICH MAY DECREASE THE STRENGTH OR DURABILITY OF THE FOUNDATION.
22. FREE FALL CONCRETE MAY BE USED PROVIDED FALL IS VERTICAL DOWN WITHOUT HITTING SIDES OF EXCAVATION, FORMWORK, REINFORCING BARS, FORM TIES, CAGE BRACING OR OTHER OBSTRUCTIONS. UNDER NO CIRCUMSTANCES SHALL CONCRETE FALL THROUGH WATER.
23. CONCRETE SHALL BE PLACED AGAINST UNDISTURBED SOIL EXCEPT FOR PIERS OF PIER AND PAD FOUNDATIONS. FORMS FOR PIERS SHALL BE REMOVED PRIOR TO PLACING STRUCTURAL BACKFILL.
24. CONSTRUCTION JOINTS, IF REQUIRED IN PIER MUST BE AT LEAST 12 INCHES (305 mm) BELOW BOTTOM OF EMBEDMENTS AND MUST BE INTENTIONALLY ROUGHENED TO A FULL AMPLITUDE OF 1/4 INCH (6 mm). FOUNDATION DESIGN ASSUMES TO OTHER CONSTRUCTION JOINTS.
25. TOP OF FOUNDATION OUTSIDE LIMITS OF ANCHOR BOLTS SHALL BE SLOPED TO DRAIN WITH A FLOATED FINISHED. AREA INSIDE LIMITS OF ANCHOR BOLTS SHALL BE LEVEL WITH A SCRATCHED FINISH.
26. EXPOSED EDGES OF CONCRETE SHALL BE CHAMFERED 3/4" X 3/4" (19 mm X 19 mm) MINIMUM.
27. FOR ANCHOR BLOCK TYPE FOUNDATIONS, FOR GUYED TOWERS, THE PORTION OF ALL STEEL ANCHORS, FROM TOP OF ANCHOR BLOCK TO GROUND LEVEL, SHALL BE COATED WITH BITUMEN. DESIGN ASSUMES PERIODIC INSPECTIONS WILL BE PERFORMED OVER THE LIFE OF THE STRUCTURE TO DETERMINE IF ADDITIONAL ANCHOR CORROSION PROTECTION MEASURES MUST BE IMPLEMENTED BASED ON OBSERVED SITE-SPECIFIC CONDITIONS.


FILE NO.				
REVISIONS				
REV.	DESCRIPTION	DWN	CHK	APP
	REVISED NOTE 8 TO 4500 PSI			
13		JHY	HA	HA
DATE: 2/10/2014				
 PO BOX 5999 PEORIA, IL 61601-5999 TOLL FREE 800-727-ROHN				
THIS DRAWING IS THE PROPERTY OF ROHN. IT IS NOT TO BE REPRODUCED, COPIED OR TRACED IN WHOLE OR IN PART WITHOUT OUR WRITTEN CONSENT.				
FOUNDATION MATERIAL INSTALLATION NOTES				
DWN:	CSR	CHK'D:	HA	DATE: 6/17/1984
ENGR:	XK	SHEET #: 1 OF 1		
PRJ. ENGR:	PRJ. MANGR:			
DRAWING NO: B841300				REV: 13

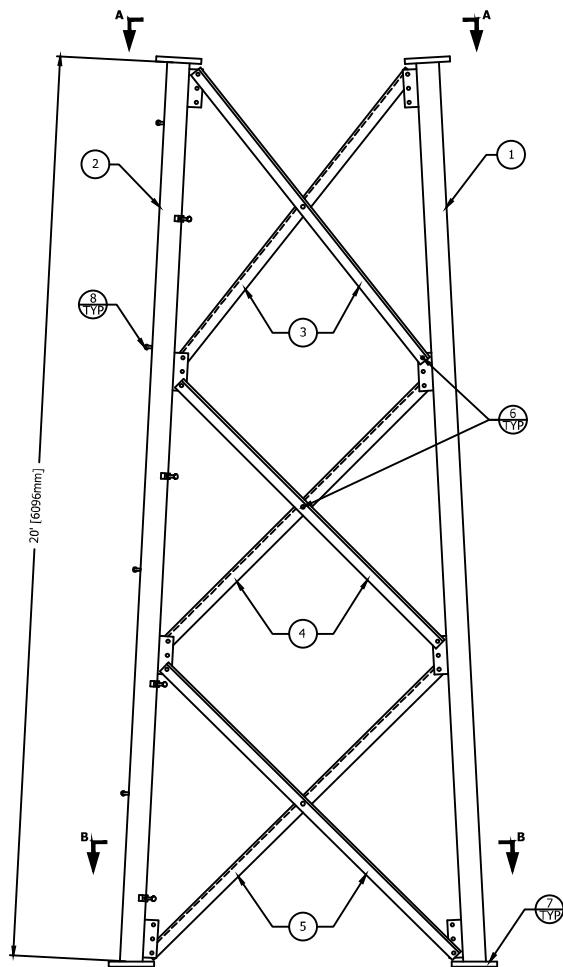


IMPORTANT: LEG P/N IS STAMPED AT BOTTOM OF BASE  
FLANGE PLATE OF EACH SECTION LEG.



SECTION 4N		SECTION 5N	
P/N	M	P/N	M
N4-1	21 3/8"	N5-1	24 3/4"
N4-2	21 15/16"	N5-2	25 1/4"
N4-3	22 1/16"	N5-3	25 7/16"
N4-4	22 1/4"	N5-4	25 5/8"
N4-5	22 3/8"	N5-5	25 3/4"
N4-6	22 9/16"	N5-6	25 15/16"
N4-7	22 3/4"	N5-7	26 1/8"
N4-8	22 7/8"	N5-8	26 1/4"
N4-9	23 1/16"	N5-9	26 7/16"
N4-10	23 3/16"	N5-10	26 5/8"
N4-11	23 3/8"	N5-11	26 3/4"
N4-12	23 9/16"	N5-12	26 15/16"
N4-13	23 11/16"	N5-13	27 1/8"
N4-14	23 7/8"	N5-14	27 5/16"
N4-15	24 1/16"	N5-15	27 7/16"
N4-16	24 3/16"	N5-16	27 5/8"
N4-17	24 3/8"	N5-17	27 13/16"
N4-18	24 9/16"	N5-18	28"
N4-19	24 11/16"	N5-19	28 1/8"
N4-20	24 7/8"	N5-20	28 5/16"
N4-21	25 1/16"	N5-21	28 1/2"
N4-T	18 9/16"		
N4-B	22 1/2"		

FILE NO.		<b>Standard-SSV</b>			
<b>REVISIONS</b>					
REV.	DESCRIPTION	DWN	CHK	APP	
8	VL341 WAS VL346				
	DATE: Mar/21/2006	M.F.	JDM		
<b>DWG REFERENCE</b>					
 <p style="margin: 10px 0;">6718 WEST PLANK ROAD PEORIA, IL 61604 TOLL FREE 800-727-ROHN</p>					
THIS DRAWING IS THE PROPERTY OF ROHN. IT IS NOT TO BE REPRODUCED, COPIED OR TRACED IN WHOLE OR IN PART WITHOUT OUR WRITTEN CONSENT.					
<b>TOWER PROFILE</b> <b>GROUTING &amp; DRAINAGE DETAIL</b>					
DWN:	O.H	CHK'D:	WDU	DATE: Mar/03/1972	
ENG'R: TWS					
DRAWING NO: SK720305				REV: 8	



**ELEVATION VIEW**

FLANGE	OFFSET	BEVEL	FLANGE PLATE (P/N)	SPREAD
TOP	N/A	N/A	6" X 6" X 3/4" (P/N: 6C)	12'-7 1/4" [3842mm]
BOTTOM	1/4" [6mm]	3 1/3° STD	7" X 7" X 1" (P/N: 7A)	14'-7 7/8" [4467mm]

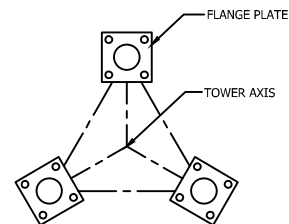
# **SECTION ASSEMBLY P/N: 11N332**

## **BILL OF MATERIAL**

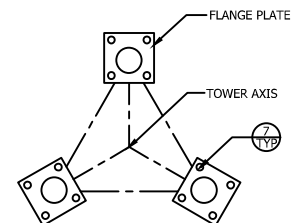
ITEM	PART NO.	QTY	DESCRIPTION
1	VL2785	2	LEG SSV 9-11N 3STD 20' 6 7BASE [PIPE 76mm STD]
2	VL2785S	1	LEG SSV 9-11N 3STD 20' 6 7BASE [PIPE 76mm STD]
3	N111	6	BRACE DS SS11T L2.5X.19X14.04' [L 64x64x5]
4	N112	6	BRACE DS SS11T L2.5X.19X14.64' [L 64x64x5]
5	N113	6	BRACE DS SS11T L2.5X.19X15.16' [L 64x64x5]
6	210017GA	45	BOLT ASSY 1/2 X 1-1/4 HSB A325 [M13x32]
7	110163	12	NUT 7/8 (JAM - PAL ) HDG [M22]
8	5/8STEP	16	BOLT ASSY STEP 5/8X7 W/DBN [M16x178]

### **GENERAL NOTES:**

- LEG PART NUMBER IS STAMPED AT THE BOTTOM OF EACH LEG AND MUST BE LOCATED AT THE BOTTOM OF THE SECTION FOR PROPER ASSEMBLY.
- STEP BOLTS ARE PROVIDED ON 1 LEG ONLY.
- THIS SECTION IS A BASE SECTION. SEE THE TOWER ASSEMBLY FOR ANCHOR BOLTS. PAL NUTS ARE SUPPLIED FOR THE ANCHOR BOLTS.
- DRAWING IS N.T.S. AND IS FOR ASSEMBLY PURPOSES ONLY.
- NOMINAL METRIC EQUIVALENTS ARE GIVEN FOR REFERENCE ONLY AND SHALL NOT BE SUBSTITUTED FOR THE DESCRIBED SIZES UNLESS OTHERWISE APPROVED BY ROHN PRODUCTS.



**VIEW A-A**



**VIEW B-B**

FILE NO.

### **REVISIONS**

REV	DESCRIPTION	DWN	CHK	APP
2	REDRAWN	JHY	JDN	HA

DATE: Aug/9/2012

**ROHN**  
PRODUCTS

PO BOX 5999  
PEORIA, IL 61601-5999  
TOLL FREE 800-727-ROHN

THIS DRAWING IS THE PROPERTY OF ROHN. IT IS NOT TO BE REPRODUCED, COPIED OR TRACED IN WHOLE OR IN PART WITHOUT OUR WRITTEN CONSENT.

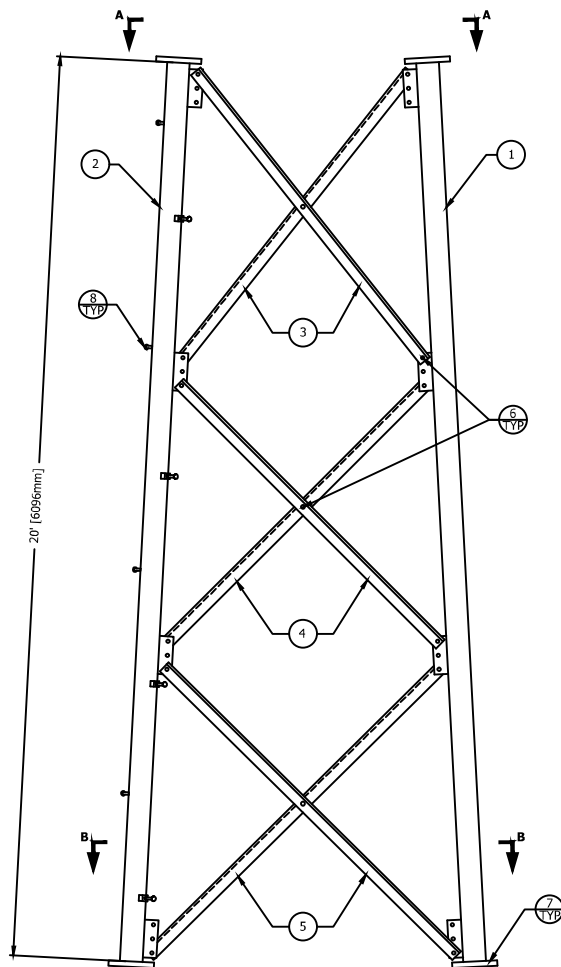
## **SECTION ASSEMBLY DETAILS FOR SSV BASE 11N332**

DWN:	CMH	CHKD:	KTL	DATE:	June/23/2004
------	-----	-------	-----	-------	--------------

ENGR:	HA	SHEET #:	1 OF 1
-------	----	----------	--------

PRJ. ENGR:		PRJ. MANGR:	
------------	--	-------------	--

DRAWING NO:	A040144	REV:	2
-------------	---------	------	---



**ELEVATION VIEW**

FLANGE	OFFSET	BEVEL	FLANGE PLATE (P/N)	SPREAD
TOP	N/A	N/A	5" X 5" X 3/4" (P/N: 5C)	10'-6 3/4" [3219mm]
BOTTOM	1/4" [6mm]	N/A	6" X 6" X 3/4" (P/N: 6A)	12'-7 1/4" [3842mm]

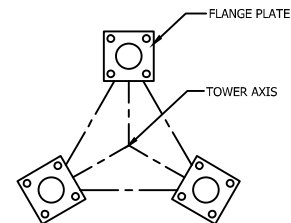
## SECTION ASSEMBLY P/N: 10NH

### BILL OF MATERIAL

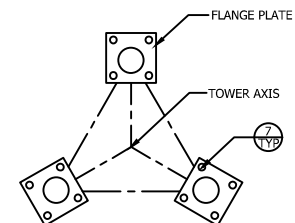
ITEM	PART NO.	QTY	DESCRIPTION
1	VL351	2	LEG SSV 9-11N 2.5EH 20' 5 60F [PIPE 64mm EH]
2	VL351S	1	LEG SSV 9-11N 2.5EH 20' 5 60F [PIPE 64mm EH]
3	N101	6	BRACE DS SS10T L2X.13X12.29' [L 51x51x3]
4	N102	6	BRACE DS SS10T L2X.13X12.86' [L 51x51x3]
5	N103	6	BRACE DS SS10T L2X.13X13.35' [L 51x51x3]
6	210017GA	45	BOLT ASSY 1/2 X 1-1/4 HSB A325 [M13x32]
7	210050GA	12	BOLT ASSY 3/4 X 2-3/4 HSB A325 [M19x70]
8	5/8STEP	16	BOLT ASSY STEP 5/8X7 W/DBN [M16x178]

#### GENERAL NOTES:

- LEG PART NUMBER IS STAMPED AT THE BOTTOM OF EACH LEG AND MUST BE LOCATED AT THE BOTTOM OF THE SECTION FOR PROPER ASSEMBLY.
- STEP BOLTS ARE PROVIDED ON 1 LEG ONLY.
- FLANGE BOLTS ARE FOR FLANGE PLATES AT THE BOTTOM OF THE SECTION.
- DRAWING IS N.T.S. AND IS FOR ASSEMBLY PURPOSES ONLY.
- NOMINAL METRIC EQUIVALENTS ARE GIVEN FOR REFERENCE ONLY AND SHALL NOT BE SUBSTITUTED FOR THE DESCRIBED SIZES UNLESS OTHERWISE APPROVED BY ROHN PRODUCTS.



**VIEW A-A**



**VIEW B-B**

FILE NO.

#### REVISIONS

REV	DESCRIPTION	DWN	CHK	APP
2	REDRAWN	JHY	JDN	HA

DATE: Aug/9/2012

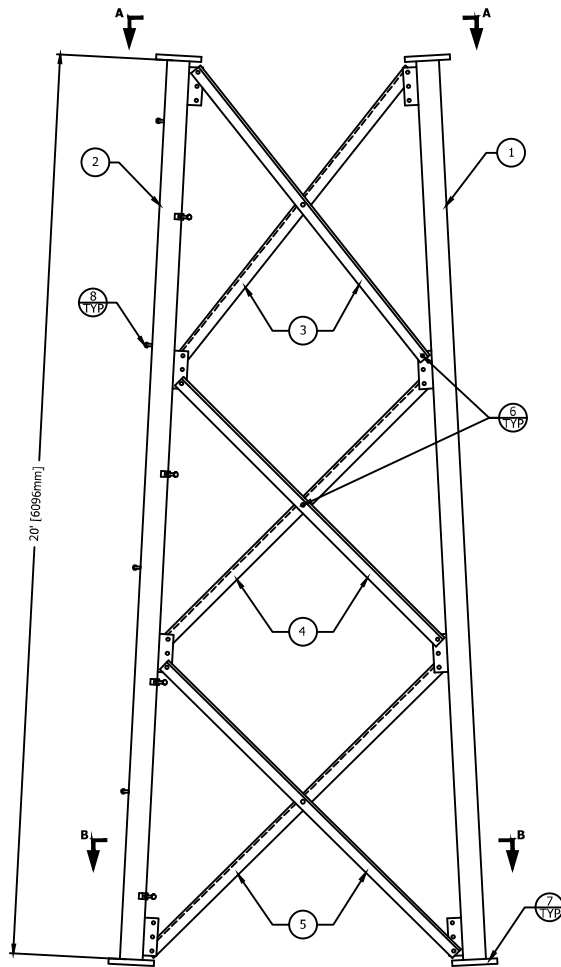
**ROHN**  
PRODUCTS

PO BOX 5999  
PEORIA, IL 61601-5999  
TOLL FREE 800-727-ROHN

THIS DRAWING IS THE PROPERTY OF ROHN. IT IS NOT TO BE REPRODUCED, COPIED OR TRACED IN WHOLE OR IN PART WITHOUT OUR WRITTEN CONSENT.

### SECTION ASSEMBLY DETAILS FOR SSV 10NH

DWN:	AED	CHKD:	HSK	DATE:	Nov/2/1978
ENGR:	TWS	SHEET #:	1 OF 1		
PRJ. ENGR:		PRJ. MANGR:			
DRAWING NO:	A780386	REV:	2		



**ELEVATION VIEW**

FLANGE	OFFSET	BEVEL	FLANGE PLATE (P/N)	SPREAD
TOP	N/A	N/A	5" X 5" X 3/4" (P/N: 5C)	8'-6 3/4" [2610mm]
BOTTOM	N/A	N/A	5" X 5" X 3/4" (P/N: 5C)	10'-6 3/4" [3219mm]

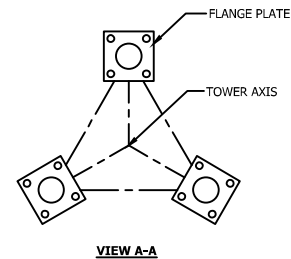
## SECTION ASSEMBLY P/N: 9NH

### BILL OF MATERIAL

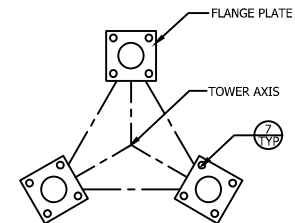
ITEM	PART NO.	QTY	DESCRIPTION
1	VL350	2	LEG SSV 9-11N 2.5EH 20' 5 5 S9 [PIPE 64mm EH]
2	VL350S	1	LEG SSV 9-11N 2.5EH 20' 5 5 S9 [PIPE 64mm EH]
3	N91	6	BRACE DS SS9T L1.75X.13X10.63' [L 44x44x3]
4	N92	6	BRACE DS SS9T L1.75X.13X11.17' [L 44x44x3]
5	N93	6	BRACE DS SS9T L1.75X.13X11.61' [L 44x44x3]
6	210017GA	45	BOLT ASSY 1/2 X 1-1/4 HSB A325 [M13x32]
7	210033GA	12	BOLT ASSY 5/8 X 2-1/2 HSB A325 [M16x64]
8	5/8STEP	16	BOLT ASSY STEP 5/8X7 W/DBN [M16x178]

#### GENERAL NOTES:

- LEG PART NUMBER IS STAMPED AT THE BOTTOM OF EACH LEG AND MUST BE LOCATED AT THE BOTTOM OF THE SECTION FOR PROPER ASSEMBLY.
- STEP BOLTS ARE PROVIDED ON 1 LEG ONLY.
- FLANGE BOLTS ARE FOR FLANGE PLATES AT THE BOTTOM OF THE SECTION.
- DRAWING IS N.T.S. AND IS FOR ASSEMBLY PURPOSES ONLY.
- NOMINAL METRIC EQUIVALENTS ARE GIVEN FOR REFERENCE ONLY AND SHALL NOT BE SUBSTITUTED FOR THE DESCRIBED SIZES UNLESS OTHERWISE APPROVED BY ROHN PRODUCTS.



**VIEW A-A**



**VIEW B-B**

FILE NO.

#### REVISIONS

REV	DESCRIPTION	DWN	CHK	APP
4	REDRAWN	JHY	JDN	HA

DATE: Aug/9/2012

**ROHN**  
PRODUCTS

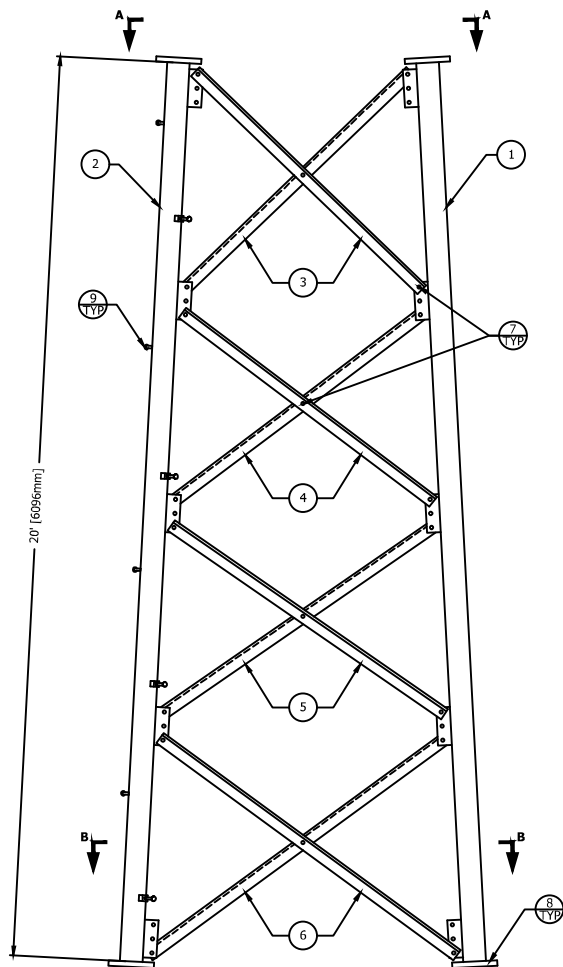
PO BOX 5999  
PEORIA, IL 61601-5999  
TOLL FREE 800-727-ROHN

THIS DRAWING IS THE PROPERTY OF ROHN. IT IS NOT TO BE REPRODUCED, COPIED OR TRACED IN WHOLE OR IN PART WITHOUT OUR WRITTEN CONSENT.

### SECTION ASSEMBLY DETAILS FOR SSV 9NH

DWN:	AED	CHK'D:	WDU	DATE:	Nov/11/1978
ENGR:	TWS	SHEET #:	1 OF 1		
PRJ. ENGR:		PRJ. MANGR:			
DRAWING NO:	A780318	REV:	4		





**ELEVATION VIEW**

FLANGE	OFFSET	BEVEL	FLANGE PLATE (P/N)	SPREAD
TOP	N/A	N/A	5" X 5" X 3/4" (P/N: 5C)	6'-6 3/4" [2000mm]
BOTTOM	N/A	N/A	5" X 5" X 3/4" (P/N: 5C)	8'-6 3/4" [2610mm]

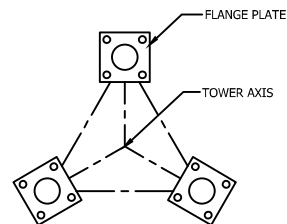
## SECTION ASSEMBLY P/N: 8N

### BILL OF MATERIAL

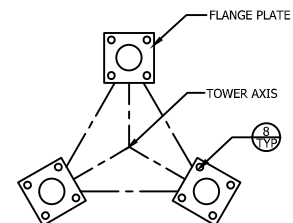
ITEM	PART NO.	QTY	DESCRIPTION
1	VL349	2	LEG SSV 8N 2.5STD 20' 5 5 [PIPE 64mm STD]
2	VL349S	1	LEG SSV 8N 2.5STD 20' 5 5 [PIPE 64mm STD]
3	N81	6	BRACE DS SS8T L1.5X.13X7.95' [L 38x38x3]
4	N82	6	BRACE DS SS8T L1.5X.13X8.36' [L 38x38x3]
5	N83	6	BRACE DS SS8T L1.5X.13X8.79' [L 38x38x3]
6	N84	6	BRACE DS SS8T L1.5X.13X9.11' [L 38x38x3]
7	210017GA	60	BOLT ASSY 1/2 X 1-1/4 HSB A325 [M13x32]
8	210033GA	12	BOLT ASSY 5/8 X 2-1/2 HSB A325 [M16x64]
9	5/8STEP	16	BOLT ASSY STEP 5/8X7 W/DBN [M16x178]

#### GENERAL NOTES:

- LEG PART NUMBER IS STAMPED AT THE BOTTOM OF EACH LEG AND MUST BE LOCATED AT THE BOTTOM OF THE SECTION FOR PROPER ASSEMBLY.
- STEP BOLTS ARE PROVIDED ON 1 LEG ONLY.
- FLANGE BOLTS ARE FOR FLANGE PLATES AT THE BOTTOM OF THE SECTION. DRAWING IS N.T.S. AND IS FOR ASSEMBLY PURPOSES ONLY.
- NOMINAL METRIC EQUIVALENTS ARE GIVEN FOR REFERENCE ONLY AND SHALL NOT BE SUBSTITUTED FOR THE DESCRIBED SIZES UNLESS OTHERWISE APPROVED BY ROHN PRODUCTS.



**VIEW A-A**



**VIEW B-B**

FILE NO.

#### REVISIONS

REV	DESCRIPTION	DWN	CHK	APP
3	REDRAWN	JHY	JDN	HA

DATE: Aug/9/2012

**ROHN**  
PRODUCTS

PO BOX 5999  
PEORIA, IL 61601-5999  
TOLL FREE 800-727-ROHN

THIS DRAWING IS THE PROPERTY OF ROHN. IT IS NOT TO BE REPRODUCED, COPIED OR TRACED IN WHOLE OR IN PART WITHOUT OUR WRITTEN CONSENT.

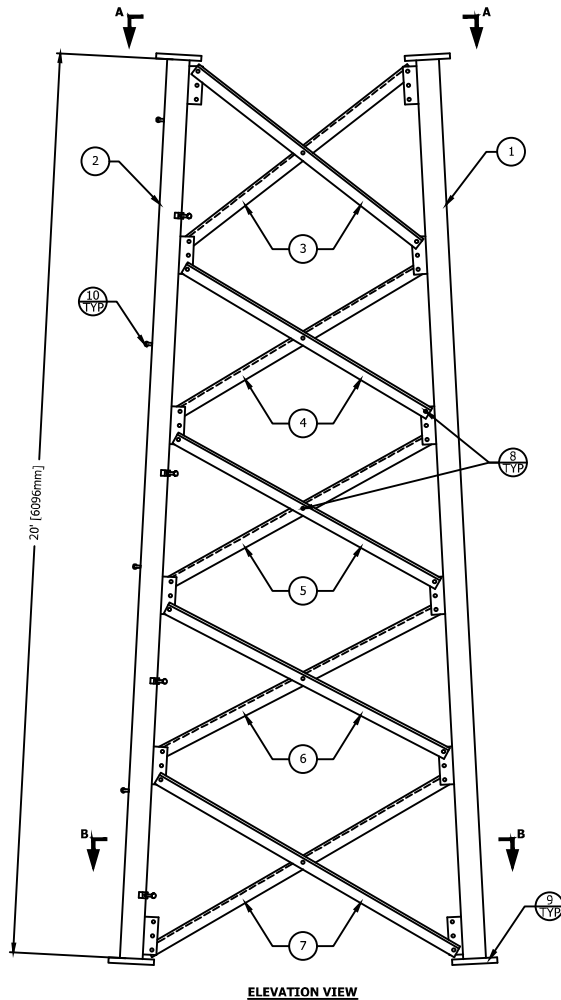
SECTION ASSEMBLY  
DETAILS FOR SSV 8N

DWN:	AED	CHKD:	MDI	DATE:	Oct/28/1978
------	-----	-------	-----	-------	-------------

ENGR:	TWS	SHEET #:	1 OF 1
-------	-----	----------	--------

PRJ. ENGR:	PRJ. MANGR:
------------	-------------

DRAWING NO:	A780252	REV:	3
-------------	---------	------	---



**ELEVATION VIEW**

FLANGE	OFFSET	BEVEL	FLANGE PLATE (P/N)	SPREAD
TOP	N/A	N/A	5" X 5" X 3/4" (P/N: 5A)	4'-6 1/4" [1378mm]
BOTTOM	1/4" [6mm]	N/A	5" X 5" X 3/4" (P/N: 5B)	6'-6 3/4" [2000mm]

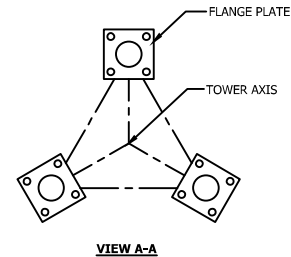
## SECTION ASSEMBLY P/N: 7N

### BILL OF MATERIAL

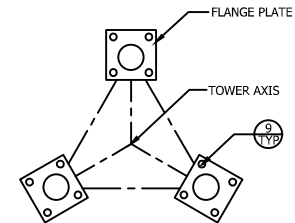
ITEM	PART NO.	QTY	DESCRIPTION
1	VL348	2	LEG SSV 6-7N 2STD 20' 5 SOFF [PIPE 51mm STD]
2	VL348S	1	LEG SSV 6-7N 2STD 20' 5 SOFF [PIPE 51mm STD]
3	N71	6	BRACE DS SS7T L1.5X.13X5.71' [L 38x38x3]
4	N72	6	BRACE DS SS7T L1.5X.13X6.03' [L 38x38x3]
5	N73	6	BRACE DS SS7T L1.5X.13X6.35' [L 38x38x3]
6	N74	6	BRACE DS SS7T L1.5X.13X6.69' [L 38x38x3]
7	N75	6	BRACE DS SS7T L1.5X.13X6.92' [L 38x38x3]
8	210017GA	75	BOLT ASSY 1/2 X 1-1/4 HSB A325 [M13x32]
9	210033GA	12	BOLT ASSY 5/8 X 2-1/2 HSB A325 [M16x64]
10	5/8STEP	16	BOLT ASSY STEP 5/8X7 W/DBN [M16x178]

#### GENERAL NOTES:

- LEG PART NUMBER IS STAMPED AT THE BOTTOM OF EACH LEG AND MUST BE LOCATED AT THE BOTTOM OF THE SECTION FOR PROPER ASSEMBLY.
- STEP BOLTS ARE PROVIDED ON 1 LEG ONLY.
- FLANGE BOLTS ARE FOR FLANGE PLATES AT THE BOTTOM OF THE SECTION.
- DRAWING IS N.T.S. AND IS FOR ASSEMBLY PURPOSES ONLY.
- NOMINAL METRIC EQUIVALENTS ARE GIVEN FOR REFERENCE ONLY AND SHALL NOT BE SUBSTITUTED FOR THE DESCRIBED SIZES UNLESS OTHERWISE APPROVED BY ROHN PRODUCTS.



**VIEW A-A**



**VIEW B-B**

FILE NO.

#### REVISIONS

REV	DESCRIPTION	DWN	CHK	APP
3	REDRAWN	JHY	JDN	HA

DATE: Aug/9/2012

**ROHN**  
PRODUCTS

PO BOX 5999  
PEORIA, IL 61601-5999  
TOLL FREE 800-727-ROHN

THIS DRAWING IS THE PROPERTY OF ROHN. IT IS NOT TO BE REPRODUCED, COPIED OR TRACED IN WHOLE OR IN PART WITHOUT OUR WRITTEN CONSENT.

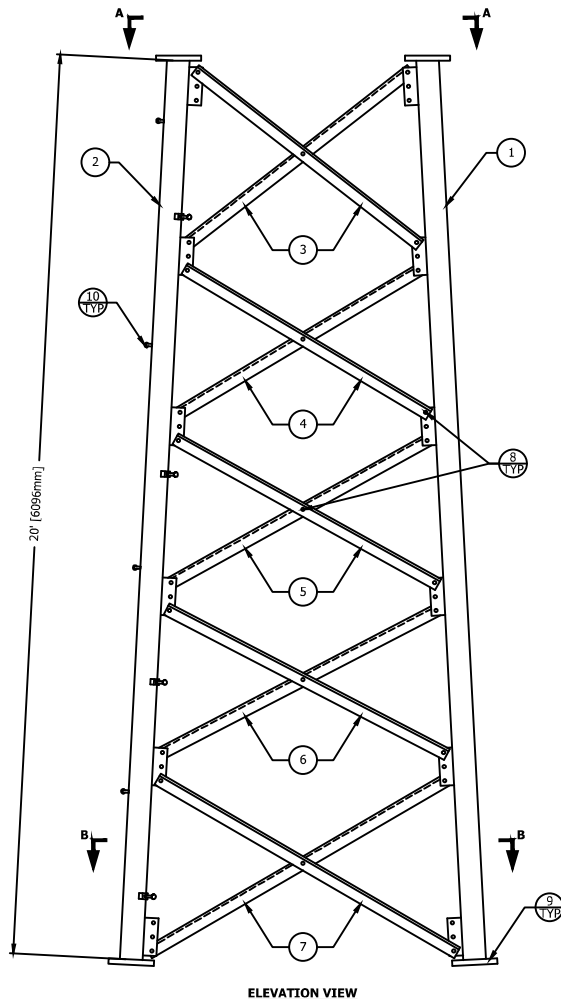
### SECTION ASSEMBLY DETAILS FOR SSV 7N

DWN:	AED	CHKD:	MWD	DATE:	Sep/9/1978
------	-----	-------	-----	-------	------------

ENGR:	T.S	SHEET #:	1 OF 1
-------	-----	----------	--------

PRJ. ENGR:	PRJ. MANGR:
------------	-------------

DRAWING NO:	A780139	REV:	3
-------------	---------	------	---



ELEVATION VIEW

FLANGE	OFFSET	BEVEL	FLANGE PLATE (P/N)	SPREAD
TOP	N/A	3 1/3° REV	4 1/2" X 4 1/2" X 5/8" (P/N: VL906)	2'-6" [762mm]
BOTTOM	N/A	N/A	5" X 5" X 3/4" (P/N: 5A)	4'-6 1/4" [1378mm]

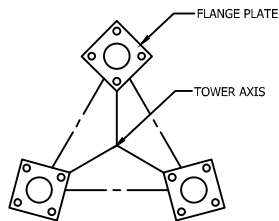
## SECTION ASSEMBLY P/N: 6N

### BILL OF MATERIAL

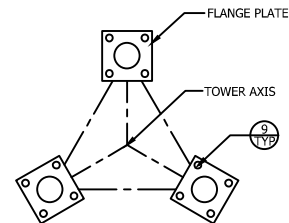
ITEM	PART NO.	QTY	DESCRIPTION
1	VL347	2	LEG SSV 6N 2STD 20' 45BEV 5 [PIPE 51mm STD]
2	VL347S	1	LEG SSV 6N 2STD 20' 45BEV 5 [PIPE 51mm STD]
3	N61	6	BRACE DS SS6T L1.5X.13X4.39' [L 38x38x3]
4	N62	6	BRACE DS SS6T L1.5X.13X4.61' [L 38x38x3]
5	N63	6	BRACE DS SS6T L1.5X.13X4.86' [L 38x38x3]
6	N64	6	BRACE DS SS6T L1.5X.13X5.14' [L 38x38x3]
7	N65	6	BRACE DS SS6T L1.5X.13X5.28' [L 38x38x3]
8	210017GA	75	BOLT ASSY 1/2 X 1-1/4 HSB A325 [M13x32]
9	210033GA	12	BOLT ASSY 5/8 X 2-1/2 HSB A325 [M16x64]
10	5/8STEP	16	BOLT ASSY STEP 5/8X7 W/DBN [M16x178]

#### GENERAL NOTES:

- LEG PART NUMBER IS STAMPED AT THE BOTTOM OF EACH LEG AND MUST BE LOCATED AT THE BOTTOM OF THE SECTION FOR PROPER ASSEMBLY.
- STEP BOLTS ARE PROVIDED ON 1 LEG ONLY.
- FLANGE BOLTS ARE FOR FLANGE PLATES AT THE BOTTOM OF THE SECTION.
- DRAWING IS N.T.S. AND IS FOR ASSEMBLY PURPOSES ONLY.
- NOMINAL METRIC EQUIVALENTS ARE GIVEN FOR REFERENCE ONLY AND SHALL NOT BE SUBSTITUTED FOR THE DESCRIBED SIZES UNLESS OTHERWISE APPROVED BY ROHN PRODUCTS.



VIEW A-A



VIEW B-B

FILE NO.

#### REVISIONS

REV	DESCRIPTION	DWN	CHK	APP
6	REDRAWN	JHY	JDN	HA

DATE: Aug/9/2012

**ROHN**  
PRODUCTS

PO BOX 5999  
PEORIA, IL 61601-5999  
TOLL FREE 800-727-ROHN

THIS DRAWING IS THE PROPERTY OF ROHN. IT IS NOT TO BE REPRODUCED, COPIED OR TRACED IN WHOLE OR IN PART WITHOUT OUR WRITTEN CONSENT.

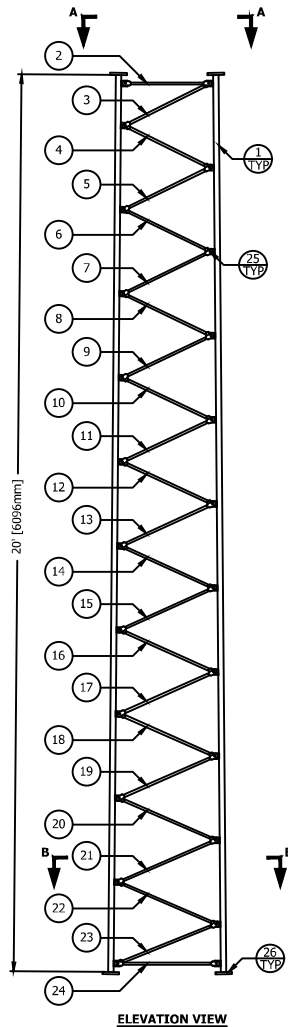
#### SECTION ASSEMBLY DETAILS FOR SSV 6N

DWN:	AED	CHKD:	WDU	DATE:	Oct/18/1978
------	-----	-------	-----	-------	-------------

ENGR:	TWS	SHEET #:	1 OF 1
-------	-----	----------	--------

PRJ. ENGR:	PRJ. MANGR:
------------	-------------

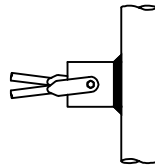
DRAWING NO:	A780200	REV:	6
-------------	---------	------	---



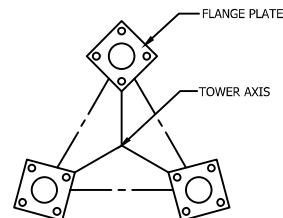
**ELEVATION VIEW**

**GENERAL NOTES:**

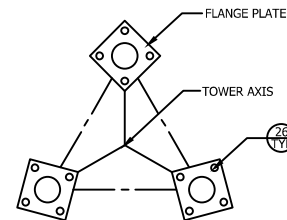
1. LEG PART NUMBER IS STAMPED AT THE BOTTOM OF EACH LEG AND MUST BE LOCATED AT THE BOTTOM OF THE SECTION FOR PROPER ASSEMBLY.
2. FLANGE BOLTS ARE FOR FLANGE PLATES AT THE BOTTOM OF THE SECTION.
3. DRAWING IS N.T.S. AND IS FOR ASSEMBLY PURPOSES ONLY.
4. NOMINAL METRIC EQUIVALENTS ARE GIVEN FOR REFERENCE ONLY AND SHALL NOT BE SUBSTITUTED FOR THE DESCRIBED SIZES UNLESS OTHERWISE APPROVED BY ROHN PRODUCTS.



**BRACING DETAIL**



**VIEW A-A**



**VIEW B-B**

FLANGE	OFFSET	BEVEL	FLANGE PLATE (P/N)	SPREAD
TOP	N/A	N/A	4 1/2" X 4 1/2" X 5/8" (P/N: VL901)	2'-2" [660mm]
BOTTOM	N/A	N/A	4 1/2" X 4 1/2" X 5/8" (P/N: VL901)	2'-6" [762mm]

**SECTION ASSEMBLY P/N: 5N**

**BILL OF MATERIAL**

ITEM	PART NO.	QTY	DESCRIPTION
1	VL341	3	LEG SSV 5N/5NST 1.44SR 20' 45" [BAR RND 37mm SR]
2	N45	3	BRACE DIAG SSV RD BAR .63X1.98 [BAR RND 16mm]
3	N51	3	BRACE DIAG SSV RD BAR .63X2.18 [BAR RND 16mm]
4	N52	3	BRACE DIAG SSV RD BAR .63X2.22 [BAR RND 16mm]
5	N53	3	BRACE DIAG SSV RD BAR .63X2.23 [BAR RND 16mm]
6	N54	3	BRACE DIAG SSV RD BAR .63X2.25 [BAR RND 16mm]
7	N55	3	BRACE DIAG SSV RD BAR .63X2.26 [BAR RND 16mm]
8	N56	3	BRACE DIAG SSV RD BAR .63X2.28 [BAR RND 16mm]
9	N57	3	BRACE DIAG SSV RD BAR .63X2.29 [BAR RND 16mm]
10	N58	3	BRACE DIAG SSV RD BAR .63X2.30 [BAR RND 16mm]
11	N59	3	BRACE DIAG SSV RD BAR .63X2.31 [BAR RND 16mm]
12	N510	3	BRACE DIAG SSV RD BAR .63X2.33 [BAR RND 16mm]
13	N511	3	BRACE DIAG SSV RD BAR .63X2.34 [BAR RND 16mm]
14	N512	3	BRACE DIAG SSV RD BAR .63X2.36 [BAR RND 16mm]
15	N513	3	BRACE DIAG SSV RD BAR .63X2.38 [BAR RND 16mm]
16	N514	3	BRACE DIAG SSV RD BAR .63X2.39 [BAR RND 16mm]
17	N515	3	BRACE DIAG SSV RD BAR .63X2.40 [BAR RND 16mm]
18	N516	3	BRACE DIAG SSV RD BAR .63X2.42 [BAR RND 16mm]
19	N517	3	BRACE DIAG SSV RD BAR .63X2.43 [BAR RND 16mm]
20	N518	3	BRACE DIAG SSV RD BAR .63X2.45 [BAR RND 16mm]
21	N519	3	BRACE DIAG SSV RD BAR .63X2.46 [BAR RND 16mm]
22	N520	3	BRACE DIAG SSV RD BAR .63X2.47 [BAR RND 16mm]
23	N521	3	BRACE DIAG SSV RD BAR .63X2.49 [BAR RND 16mm]
24	N58	3	BRACE DIAG SSV RD BAR .63X2.30 [BAR RND 16mm]
25	210008GA	72	BOLT ASSY 3/8 X 1-1/2 HCS G5 [M10x38]
26	210032GA	12	BOLT ASSY 5/8 X 2-1/4 HSB A325 [M16x57]

FILE NO.

REVISIONS				
REV	DESCRIPTION	DWN	CHK	APP
5	REDRAWN	JHY	JDN	HA
DATE: Aug/9/2012				

**ROHN**  
PRODUCTS

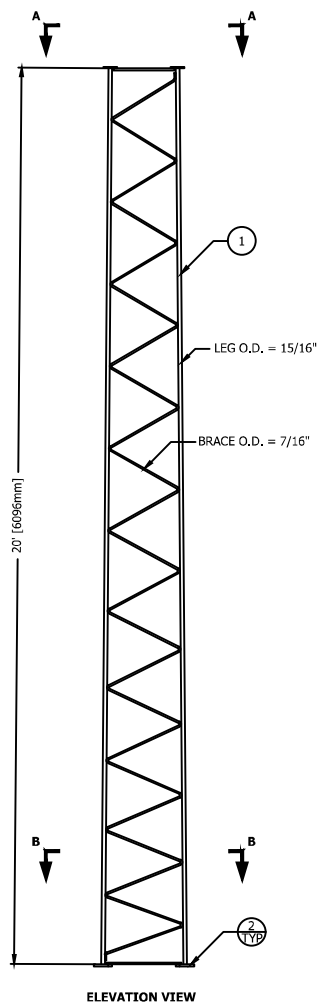
PO BOX 5999  
PEORIA, IL 61601-5999  
TOLL FREE 800-727-ROHN

THIS DRAWING IS THE PROPERTY OF ROHN. IT IS NOT TO BE REPRODUCED, COPIED OR TRACED IN WHOLE OR IN PART WITHOUT OUR WRITTEN CONSENT.

**SECTION ASSEMBLY  
DETAILS FOR SSV 5N**

DWN: AED	CHKD: JD	DATE: Mar/22/1979
ENGR: TWS	SHEET #: 1 OF 1	
PRJ. ENGR:	PRJ. MANGR:	
DRAWING NO: A790119	REV: 5	



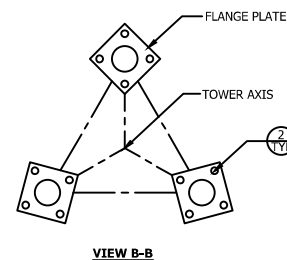
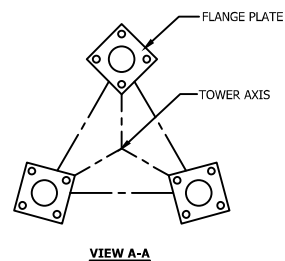


FLANGE	OFFSET	BEVEL	FLANGE PLATE (P/N)	SPREAD
TOP	N/A	1/2° REV	3" X 3" X 3/8" (P/N: 3A)	1'-6" [457mm]
BOTTOM	N/A	1/2° STD	4" X 4" X 1/2" (P/N: 4C)	1'10" [559mm]

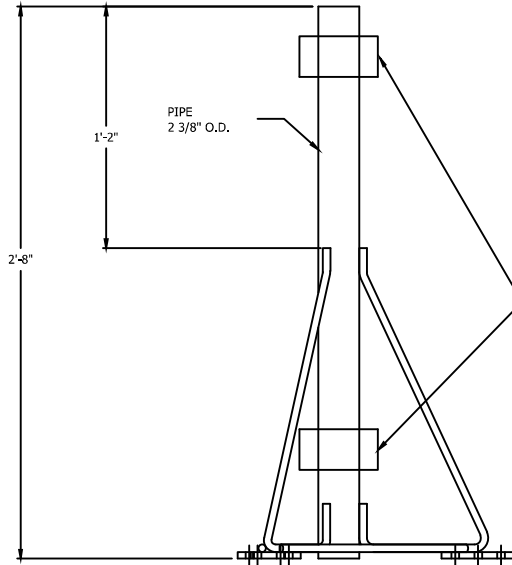
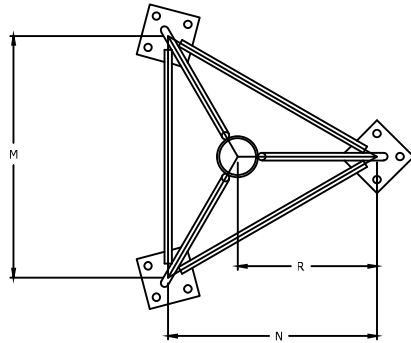
SECTION ASSEMBLY P/N: 3WN				
BILL OF MATERIAL				
ITEM	PART NO.	QTY	DESCRIPTION	
1	VS3	1	SECTION 20' 3WN WELDED HDG	
2	210020GA	12	BOLT ASSY 1/2 X 2 HSB A325	[M13x51]

**GENERAL NOTES:**

1. LEG PART NUMBER IS STAMPED AT THE BOTTOM OF EACH LEG AND MUST BE LOCATED AT THE BOTTOM OF THE SECTION FOR PROPER ASSEMBLY.
2. FLANGE BOLTS ARE FOR FLANGE PLATES AT THE BOTTOM OF THE SECTION.
3. DRAWING IS N.T.S. AND IS FOR ASSEMBLY PURPOSES ONLY.
4. NOMINAL METRIC EQUIVALENTS ARE GIVEN FOR REFERENCE ONLY AND SHALL NOT BE SUBSTITUTED FOR THE DESCRIBED SIZES UNLESS OTHERWISE APPROVED BY ROHN PRODUCTS.




FILE NO.				
REVISIONS				
REV.	DESCRIPTION	DWN	CHK	APP
6	REDRAWN	JHY	JDN	HA
DATE: Oct/30/2012				
<p style="margin: 0;">PO BOX 5999 PEORIA, IL 61601-5999 TOLL FREE 800-727-ROHN</p>				
THIS DRAWING IS THE PROPERTY OF ROHN. IT IS NOT TO BE REPRODUCED, COPIED OR TRACED IN WHOLE OR IN PART WITHOUT OUR WRITTEN CONSENT.				
SECTION ASSEMBLY DETAILS FOR SSV 3WN				
DWN:	AED	CHKD:	RAM	DATE: Mar/14/1979
ENGR:	TWS		SHEET #: 1 OF 1	
PRJ. ENGR:			PRJ. MANGR:	
DRAWING NO: A790097				REV: 6

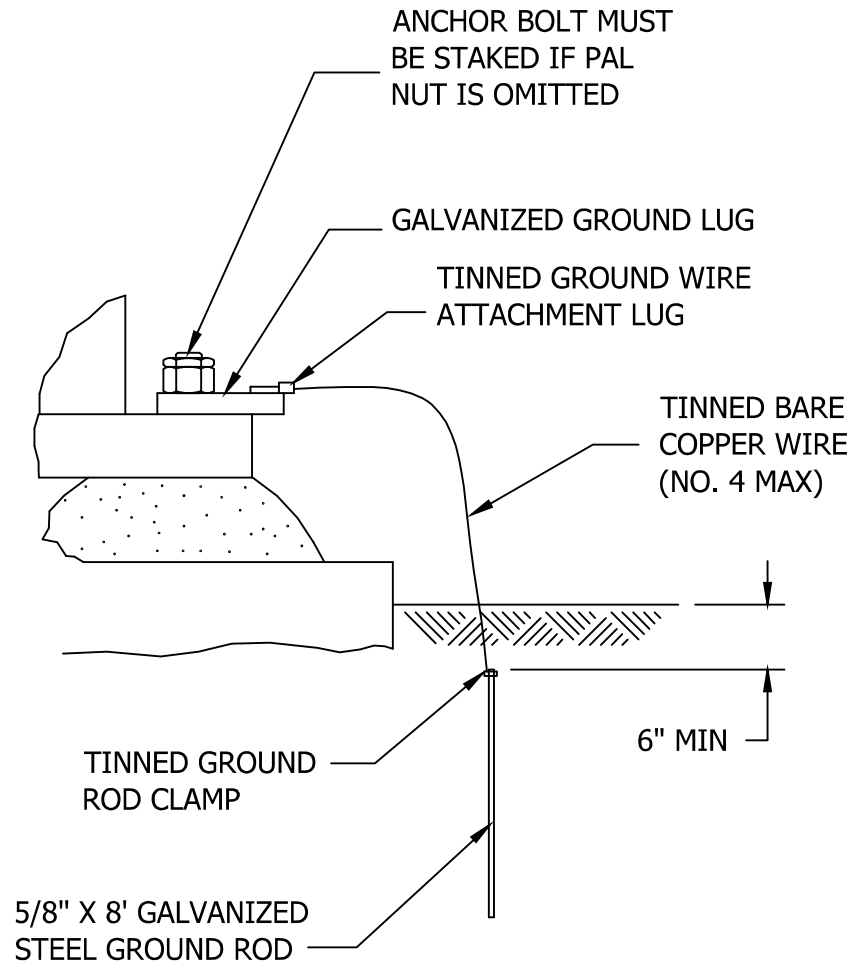



TAPERED TOP ASSY BILL OF MATERIALS DETAIL								
	TOWER SEC.				FLANGE PLATE	FLANGE BOLTS		
ASSY P/N	NUMBER	M	N	R	SIZE	QTY	SIZE	P/N
1TT	1W, 1WB, 2W	1'-2"	1'-0 1/8"	0'-8 1/16"	3 X 3 X 3/8	9	3/8 X 1-1/2	210008GA
3TT	2WST, 2WB, 3WN	1'-6"	1'-3 9/16"	0'-10 3/8"	3 X 3 X 3/8	9	3/8 X 1-1/2	210008GA
4TTN	3WNST, 3WNB, 4N	1'-10"	1'-7 1/16"	1'-0 11/16"	4 X 4 X 1/2	9	1/2 X 2	210020GA
5TTN	4NST, 4NA, 4WB, 4NC, 5N	2'-2"	1'-10 1/2"	1'-3"	4-1/2 X 4-1/2 X 5/8	9	5/8 X 2-1/4	210032GA
6TT	5NST, 5NA, 5NB, 5NC, 6N	2'-6"	2'-2"	1'-5 5/16"	4-1/2 X 4-1/2 X 5/8	9	5/8 X 2-1/4	210032GA

NOTE: DESIGN BASED ON THRUST OF 500# AT CLAMPING POSTIONS

RECOMMENDED CLAMPING POSITIONS FOR ANTENNA MOUNTS

FILE NO.				
REVISIONS				
REV.	DESCRIPTION	DWN	CHK	APP
12	UPDATED TO NEW STANDARDS	JEC	KTL	DWG
DATE: 07/25/11				
 PO BOX 5999 PEORIA, IL 61601-5999 TOLL FREE 800-727-ROHN				
THIS DRAWING IS THE PROPERTY OF ROHN. IT IS NOT TO BE REPRODUCED, COPIED OR TRACED IN WHOLE OR IN PART WITHOUT OUR WRITTEN CONSENT.				
TAPERED TOP ASSEMBLY				
DWN:	MDI	CHKD:	OH	DATE: JAN/03/1967
ENGR:	CW	SHEET #:		1 OF 1
DRAWING NO:				REV:
SK670407				12



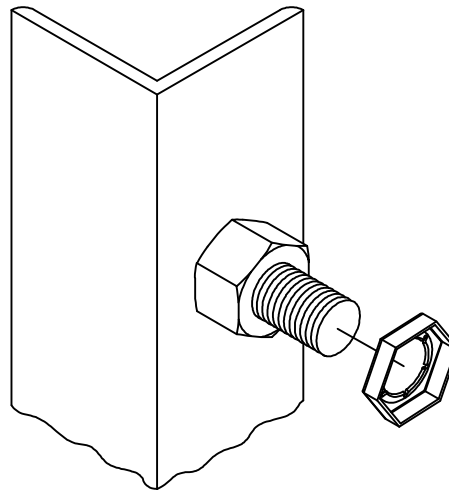
FILE NO.												
Standard-SSV												
REVISIONS												
REV.	DESCRIPTION	DWN	CHK	APP								
1	UPDATED DATE: Aug/22/2005	JDM	HA	HA								
2	UPDATED GROUND ROD & NOTES DATE: Oct/26/2007	M.F	CTL	HA								
DWG REFERENCE <table border="1"> <tr><td> </td></tr> <tr><td> </td></tr> <tr><td> </td></tr> <tr><td> </td></tr> <tr><td> </td></tr> <tr><td> </td></tr> <tr><td> </td></tr> </table>												
 6718 WEST PLANK ROAD PEORIA, IL 61604 TOLL FREE 800-727-ROHN												
THIS DRAWING IS THE PROPERTY OF ROHN. IT IS NOT TO BE REPRODUCED, COPIED OR TRACED IN WHOLE OR IN PART WITHOUT OUR WRITTEN CONSENT.												
GROUNDING BASE DETAIL FOR SELF SUPPORT TOWERS												
DWN:	CHK'D:	DATE:										
JDM	B. F	Jun/04/2002										
ENGR:												
TWS												
DRAWING NO:	REV:											
C020349	2											






- ASSEMBLY BOLT INSTALLATION**
1. UNLESS OTHERWISE SPECIFIED, ASSEMBLY BOLTS AND ANCHOR BOLTS ARE TO BE TIGHTENED TO A SNUG TIGHT CONDITION (MEMBERS IN FIRM CONTACT) AND MUST INCLUDE A NUT LOCKING DEVICE. NO MINIMUM BOLT TENSION OR TORQUE VALUES ARE REQUIRED. WHEN LOCK WASHERS ARE PROVIDED AS A NUT LOCKING DEVICE, REPLACE ANY DAMAGED WASHERS DUE TO OVER TIGHTENING.
  2. WASHERS ARE TO BE INSTALLED OVER SLOTTED HOLES.

- PAL NUT INSTALLATION**
1. PAL NUTS ARE TO BE INSTALLED AFTER NUTS ARE TIGHT AND WITH EDGE LIP OUT (SEE PICTURE). PAL NUTS ARE NOT REQUIRED WHEN SELF-LOCKING NUTS OR LOCK WASHERS ARE PROVIDED.



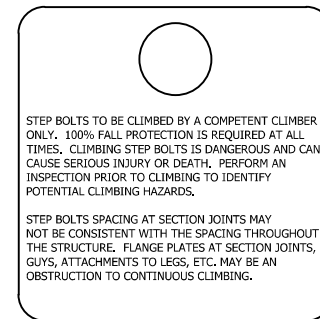
FILE NO.				
REVISIONS				
REV.	DESCRIPTION	DWN	CHK	APP
7	CHANGE NOTATION	JEC	JDN	HA
DATE: 01/11/12				
 PO BOX 5999 PEORIA, IL 61601-5999 TOLL FREE 800-727-ROHN				
THIS DRAWING IS THE PROPERTY OF ROHN. IT IS NOT TO BE REPRODUCED, COPIED OR TRACED IN WHOLE OR IN PART WITHOUT OUR WRITTEN CONSENT.				
BOLT ASSEMBLY INSTALLATION				
DWN:	OH	CHK'D:	GHB	DATE:
ENGR:		TWS		07/05/79
DRAWING NO:			SHEET #:	
A790135			1 OF 1	
REV:				7



(INSTALL WARNING SIGN IN BOTTOM 5' OF STRUCTURE)

STEP BOLTS SPACING AT SECTION JOINTS MAY NOT BE CONSISTENT WITH THE SPACING THROUGHOUT THE STRUCTURE. FLANGE PLATES AT SECTION JOINTS, GUYS, ATTACHMENTS TO LEGS, ETC. MAY BE AN OBSTRUCTION TO CONTINUOUS CLIMBING.

1. STEP BOLTS MUST BE TURNED UNTIL THE FRONT EDGE OF THE BOLT TOUCHES THE SIDE OF THE STRUCTURE.
2. STEP BOLTS ARE SUPPLIED FOR CONSTRUCTION PURPOSES AND ARE NOT INTENDED FOR USE BY UNQUALIFIED PERSONNEL.
3. DEVIATION FROM PERFECT ALIGNMENT IS ACCEPTABLE. SOME SPACING INCONSISTENCY MAY EXIST AT SPLICE LOCATIONS.
4. IF STEP BOLTS ARE BELIEVED TO PRESENT SAFETY PROBLEMS TO PERSONNEL, DO NOT INSTALL THE STEP BOLTS.



FILE NO.		Standard-SSV			
REVISIONS					
REV.	DESCRIPTION	DWN	CHK	APP	
1	DATE: Aug/21/2005				
2	DATE: Aug/21/2005 UPDATED				
3	DATE: Aug/22/2005 ADDED WARNING SIGN	JDM	HA		HA
4	DATE: Mar/15/2006 REVISED GENERAL NOTES	JDM	JWS		HA
5	DATE: Feb/28/2007	JDM	M.F		HA
DWG REFERENCE					