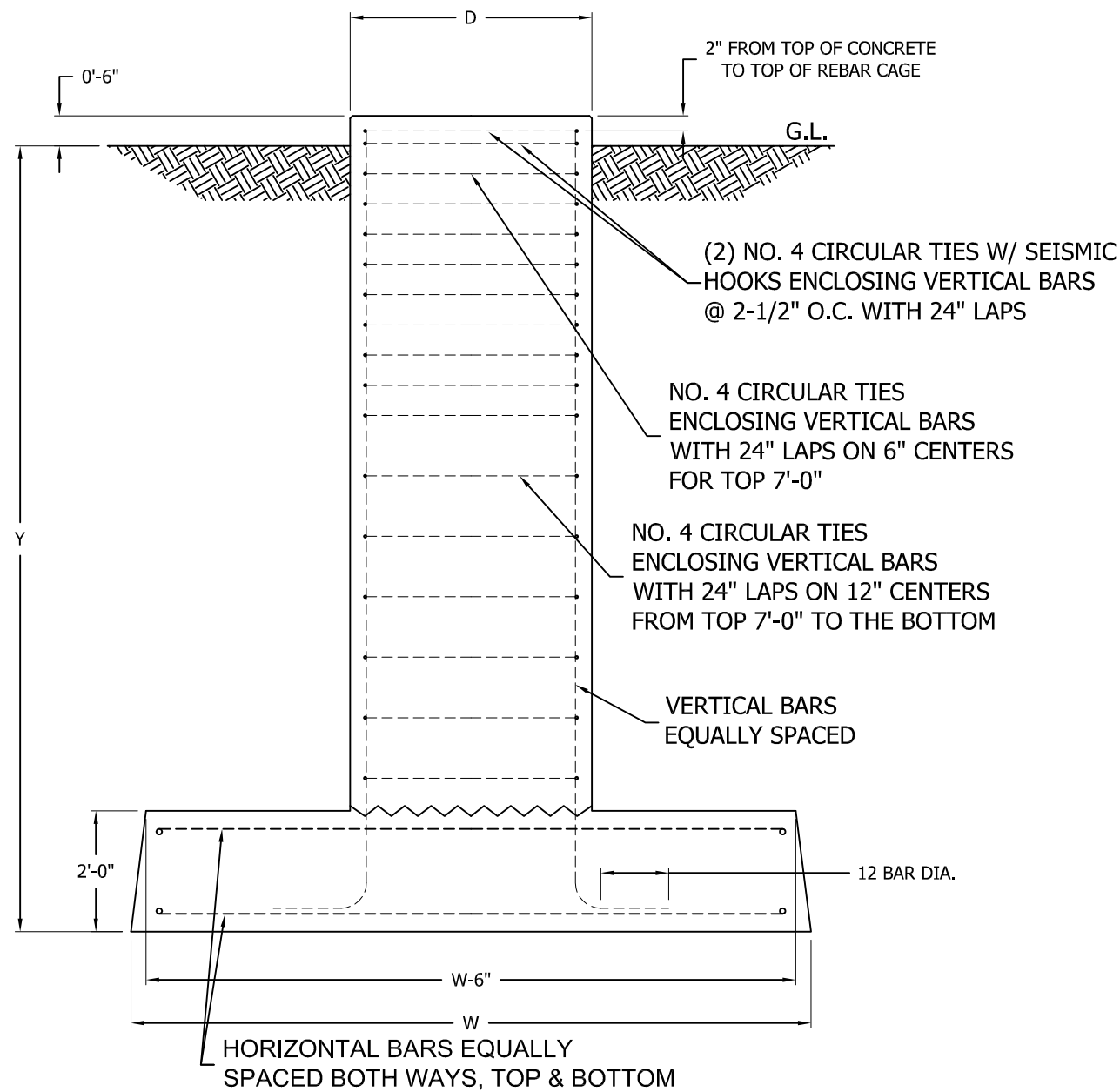
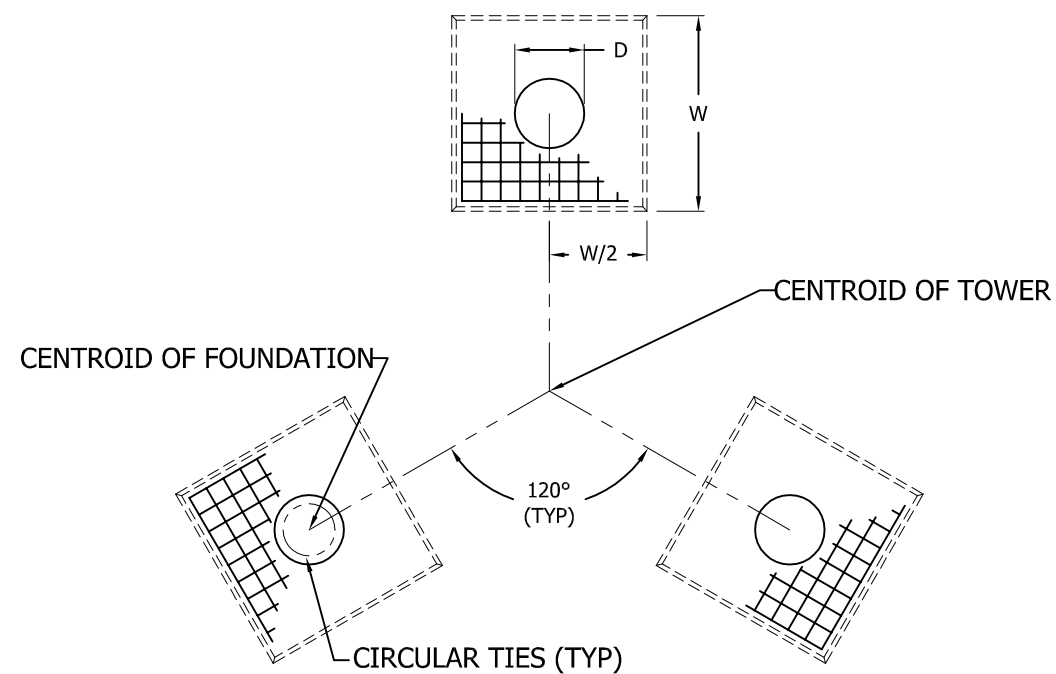


REVISIONS				
REV.	DESCRIPTION	DWN	CHK	APP



ELEVATION VIEW
N.T.S.



PLAN VIEW
N.T.S.

PIER AND PAD FOUNDATIONS						
FOUNDATION I.D. NUMBER	PIER DIAMETER, D (FT)	DEPTH, Y (FT)	MAT WIDTH, W (FT)	VERTICAL BARS (QTY) #SIZE	HORIZONTAL BARS (QTY) #SIZE	TOTAL CONCRETE VOLUME (3 FOUNDATIONS) (CU.YDS.)
P1	2.5	6	6	(8) #7	(8) #7 (32 TOTAL)	10.5
P2	2.5	8	6	(8) #7	(8) #7 (32 TOTAL)	11.5
P3	2.5	8	8	(8) #7	(10) #7 (40 TOTAL)	17.8
P4	3	8	8	(12) #7	(10) #7 (40 TOTAL)	19.3
P5	3	10	8	(12) #7	(10) #7 (40 TOTAL)	20.9
P6	3.5	10	8	(16) #7	(10) #7 (40 TOTAL)	23.3
P7	4	10	8	(16) #7	(10) #7 (40 TOTAL)	26.1
P8	4	12	8	(16) #8	(10) #7 (40 TOTAL)	28.9

GENERAL NOTES:

- FOR GENERAL FOUNDATION NOTES, SEE DRAWING NUMBER B090548.
- FOR ANCHOR BOLT LAYOUT, SEE ASSEMBLY DRAWING.
- FOR ANCHOR BOLT SIZE AND QUANTITY, SEE ANCHOR BOLT LAYOUT FOR TOWER.
- VERTICAL BAR CAGE DIAMETER IS EQUAL TO PIER DIAMETER MINUS 9 INCHES.
- CONSTRUCTION JOINT BETWEEN PAD AND PIER MUST BE ROUGHENED TO A FULL AMPLITUDE OF 1/4".



PO BOX 5999
PEORIA, IL 61601-5999
TOLL FREE 800-727-ROHN

THIS DRAWING IS THE PROPERTY OF ROHN. IT IS NOT TO BE REPRODUCED, COPIED OR TRACED IN WHOLE OR IN PART WITHOUT OUR WRITTEN CONSENT.

RT CATALOG PIER AND PAD FOUNDATIONS
PRESUMPTIVE CLAY PER ANSI/TIA-222-G

DWN: AS	CHK'D:	DATE: 2/13/2018
ENG'R:	SHEET #: 1 OF 1	
PRJ. ENG'R: AS	PRJ. MANG'R:	
DRAWING NO: RT-PIER AND PAD	REV: 0	